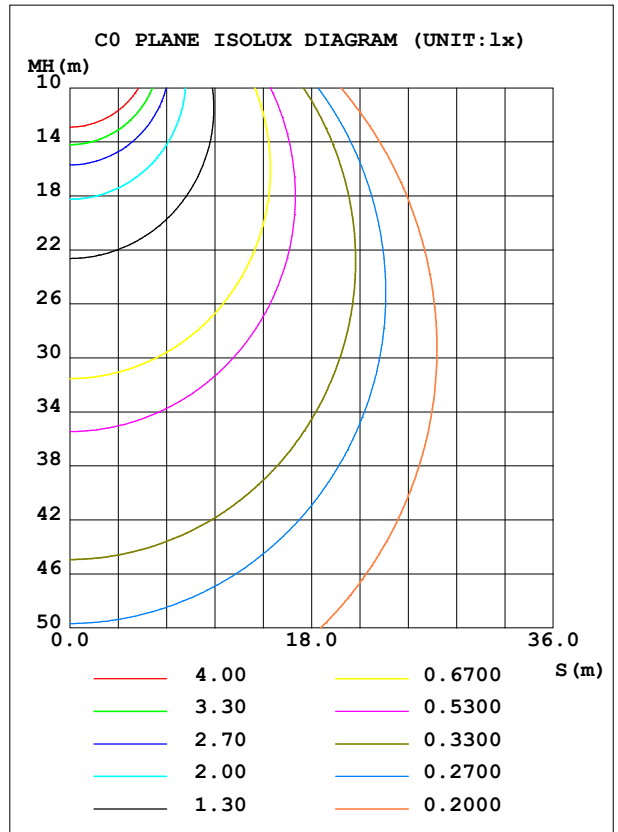
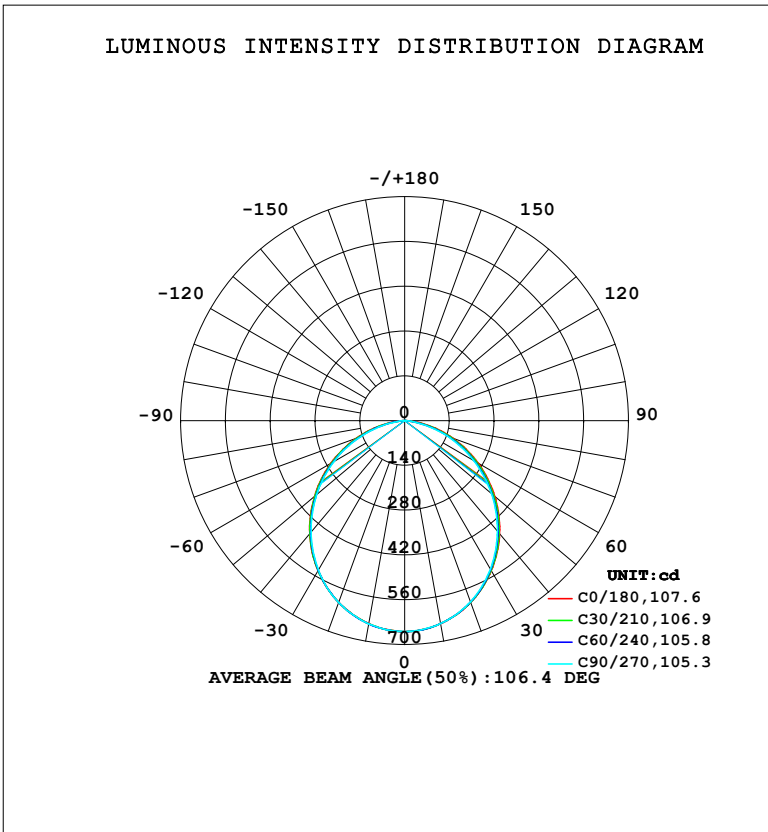


LUMINAIRE PHOTOMETRIC TEST REPORT

Test:U:120.25V I:0.1314A P:15.574W PF:0.9857 Freq:50.00Hz Lamp Flux:1737.81x1 lm		
NAME:	TYPE:	WEIGHT:
SPEC.:	DIM.:	SERIAL No.:
MFR.: EVERFINE	SUR.: 129mm	Shielding Angle:

DATA OF LAMP		PHOTOMETRIC DATA				Eff: 111.59 lm/W
MODEL	OJL154	I _{max} (cd)	659.5	S/MH (C0/180)	1.23	
NOMINAL POWER (W)	15	LOR (%)	100.0	S/MH (C90/270)	1.22	
RATED VOLTAGE (V)	120	TOTAL FLUX (lm)	1737.8	η UP, DN (C0-180)	0.0, 49.9	
NOMINAL FLUX (lm)	1737.81	CIE CLASS	DIRECT	η UP, DN (C180-360)	0.0, 50.1	
LAMPS INSIDE	1	η up (%)	0.0	CIBSE SHR NOM	1.25	
TEST VOLTAGE (V)	219.5	η down (%)	100.0	CIBSE SHR MAX	1.35	



C Range: 0 - 360DEG
 C Interval: 15.0DEG
 Test Speed: HIGH
 Temperature: 25.3°C
 Operators: DAMIN
 Test Date: 2024-01-16

γ Range: 0 - 90DEG
 γ Interval: 1.0DEG
 Test System: EVERFINE GO-2000B_V1 SYSTEM V2.00.473
 Humidity: 65.0%
 Test Distance: 9.401m [K=1.0000]
 Remarks:

ZONAL FLUX DIAGRAM

ZONAL FLUX DIAGRAM:

γ	C0	C45	C90	C135	C180	C225	C270	C315	γ	Φ zone	Φ total	%lum, lamp
10	644.4	645.6	644.4	644.4	644.3	645.1	645.1	644.7	0- 10	62.24	62.24	3.58,3.58
20	604.6	604.7	602.4	604.0	604.1	604.1	604.9	604.4	10- 20	177.0	239.3	13.8,13.8
30	541.8	541.0	536.2	539.6	541.7	540.7	539.3	540.7	20- 30	264.8	504.0	29,29
40	462.0	458.1	451.2	456.8	462.0	458.2	455.6	458.8	30- 40	313.3	817.3	47,47
50	367.8	362.3	354.3	360.8	367.9	362.2	359.4	362.6	40- 50	317.1	1134	65.3,65.3
60	265.1	258.5	249.3	257.3	265.7	257.7	254.9	258.4	50- 60	277.9	1412	81.3,81.3
70	160.2	151.7	142.1	150.6	160.2	151.9	146.5	152.8	60- 70	202.8	1615	92.9,92.9
80	60.42	50.19	39.17	49.21	59.76	49.64	42.05	50.71	70- 80	105.6	1721	99,99
90	0.9655	0.9558	0.9229	0.9369	1.085	1.166	1.050	1.185	80- 90	17.18	1738	100,100
100									90-100			
110									100-110			
120									110-120			
130									120-130			
140									130-140			
150									140-150			
160									150-160			
170									160-170			
180									170-180			
DEG	LUMINOUS INTENSITY:cd									UNIT:lm		

Conical surface Flux(90deg): 978.18 lm

%lum = 56.3%

%lamp = 56.3%

Conical surface Flux(130deg): 1524.8 lm

%lum = 87.7%

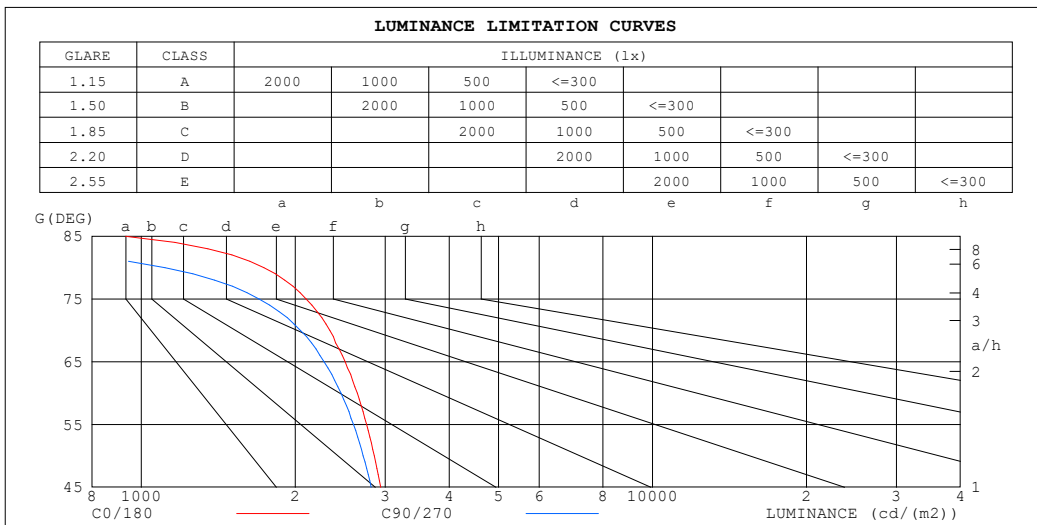
%lamp = 87.7%

C Range: 0 - 360DEG
 C Interval: 15.0DEG
 Test Speed: HIGH
 Temperature:25.3°C
 Operators:DAMIN
 Test Date:2024-01-16

γ Range: 0 - 90DEG
 γ Interval: 1.0DEG
 Test System:EVERFINE GO-2000B_V1 SYSTEM V2.00.473
 Humidity:65.0%
 Test Distance:9.401m [K=1.0000]
 Remarks:

LUMINANCE LIMITATION CURVES

Test:U:120.25V I:0.1314A P:15.574W PF:0.9857 Freq:50.00Hz Lamp Flux:1737.81x1 lm		
NAME:	TYPE:	WEIGHT:
SPEC.:	DIM.:	SERIAL No.:
MFR.: EVERFINE	SUR.: 129mm	Shielding Angle:



LUMINANCE cd/ (m2)		
G (DEG)	C0/180	C90/270
85	931	217
80	1736	1112
75	2101	1700
70	2337	2048
65	2503	2276
60	2645	2458
55	2758	2599
50	2855	2717
45	2938	2817

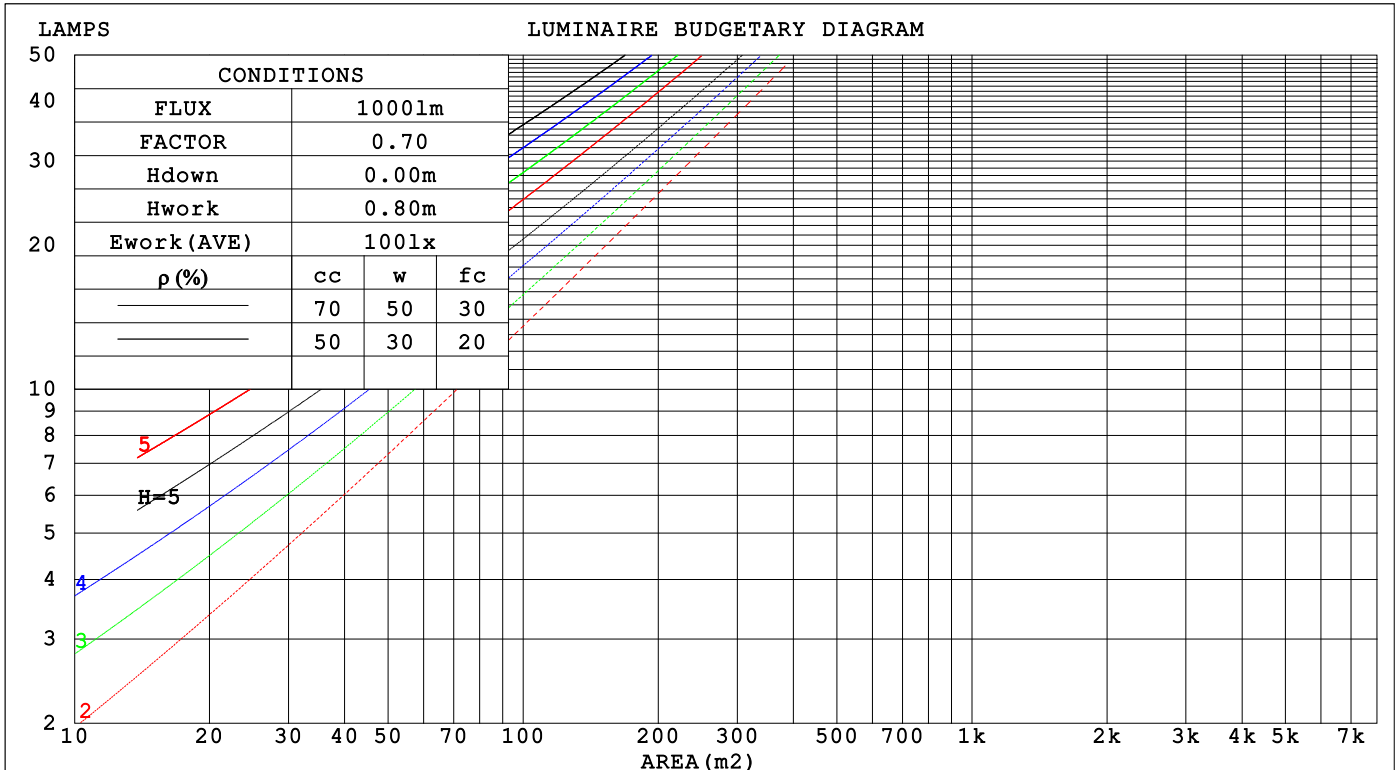
C Range: 0 - 360DEG
 C Interval: 15.0DEG
 Test Speed: HIGH
 Temperature:25.3°C
 Operators:DAMIN
 Test Date:2024-01-16

γ Range: 0 - 90DEG
 γ Interval: 1.0DEG
 Test System:EVERFINE GO-2000B_V1 SYSTEM V2.00.473
 Humidity:65.0%
 Test Distance:9.401m [K=1.0000]
 Remarks:

CU AND LUMINAIRE BUDGETARY ESTIMATE DIAGRAM

Test:U:120.25V I:0.1314A P:15.574W PF:0.9857 Freq:50.00Hz Lamp Flux:1737.81x1 lm		
NAME:	TYPE:	WEIGHT:
SPEC.:	DIM.:	SERIAL No.:
MFR.: EVERFINE	SUR.: 129mm	Shielding Angle:

ρcc	80%			70%			50%			30%			10%			0
ρw	50%	30%	10%	50%	30%	10%	50%	30%	10%	50%	30%	10%	50%	30%	10%	0
ρfc	20%			20%			20%			20%			20%			0
RCR	RCR:Room Cavity Ratio															
	Coefficients of Utilization(CU)															
0.0	1.19	1.19	1.19	1.16	1.16	1.16	1.11	1.11	1.11	1.06	1.06	1.06	1.02	1.02	1.02	1.00
1.0	1.05	1.01	.97	1.02	.99	.95	.98	.95	.92	.94	.92	.90	.91	.89	.87	.85
2.0	.92	.85	.79	.90	.84	.79	.86	.81	.77	.83	.79	.75	.80	.76	.73	.71
3.0	.81	.73	.66	.79	.72	.66	.76	.70	.65	.73	.68	.63	.71	.66	.62	.60
4.0	.72	.63	.56	.70	.62	.56	.68	.61	.55	.65	.59	.55	.63	.58	.54	.52
5.0	.64	.55	.49	.63	.55	.48	.61	.54	.48	.59	.52	.47	.57	.51	.47	.45
6.0	.58	.49	.43	.57	.48	.42	.55	.48	.42	.53	.47	.42	.52	.46	.41	.39
7.0	.52	.44	.38	.52	.43	.38	.50	.43	.37	.49	.42	.37	.47	.41	.37	.35
8.0	.48	.39	.34	.47	.39	.34	.46	.39	.33	.45	.38	.33	.43	.37	.33	.31
9.0	.44	.36	.30	.43	.36	.30	.42	.35	.30	.41	.35	.30	.40	.34	.30	.28
10.0	.41	.33	.28	.40	.33	.27	.39	.32	.27	.38	.32	.27	.37	.31	.27	.25



C Range: 0 - 360DEG
 C Interval: 15.0DEG
 Test Speed: HIGH
 Temperature:25.3°C
 Operators:DAMIN
 Test Date:2024-01-16

γ Range: 0 - 90DEG
 γ Interval: 1.0DEG
 Test System:EVERFINE GO-2000B_V1 SYSTEM V2.00.473
 Humidity:65.0%
 Test Distance:9.401m [K=1.0000]
 Remarks:

WEC AND CCEC

Test:U:120.25V I:0.1314A P:15.574W PF:0.9857 Freq:50.00Hz								
Lamp Flux:1737.81x1 lm								
NAME:			TYPE:			WEIGHT:		
SPEC.:			DIM.:			SERIAL No.:		
MFR.: EVERFINE			SUR.: 129mm			Shielding Angle:		

ρ_{CC}	80%			70%			50%			30%			10%			0
ρ_w	50%	30%	10%	50%	30%	10%	50%	30%	10%	50%	30%	10%	50%	30%	10%	0
ρ_{fc}	20%			20%			20%			20%			20%			0
RCR	RCR:Room Cavity Ratio						Wall Exitance Coefficients (WEC)									
0.0																
1.0	.293	.167	.053	.286	.163	.052	.273	.157	.050	.261	.150	.048	.250	.145	.047	
2.0	.280	.154	.047	.274	.151	.047	.262	.146	.045	.252	.141	.044	.242	.137	.043	
3.0	.261	.139	.042	.256	.137	.041	.246	.133	.040	.236	.129	.040	.228	.126	.039	
4.0	.243	.126	.037	.238	.124	.037	.229	.121	.036	.220	.118	.036	.212	.115	.035	
5.0	.225	.115	.033	.221	.113	.033	.213	.111	.033	.205	.108	.032	.198	.106	.032	
6.0	.209	.105	.030	.206	.104	.030	.198	.102	.030	.192	.100	.029	.185	.098	.029	
7.0	.195	.097	.027	.192	.096	.027	.186	.094	.027	.180	.092	.027	.174	.090	.027	
8.0	.183	.089	.025	.180	.089	.025	.174	.087	.025	.169	.085	.025	.164	.084	.024	
9.0	.172	.083	.023	.169	.082	.023	.164	.081	.023	.159	.080	.023	.154	.078	.023	
10.0	.162	.077	.021	.159	.077	.021	.154	.076	.021	.150	.074	.021	.146	.073	.021	

ρ_{CC}	80%			70%			50%			30%			10%			0
ρ_w	50%	30%	10%	50%	30%	10%	50%	30%	10%	50%	30%	10%	50%	30%	10%	0
ρ_{fc}	20%			20%			20%			20%			20%			0
RCR	RCR:Room Cavity Ratio						Ceiling Cavity Exitance Coefficients (CCEC)									
0.0	.190	.190	.190	.163	.163	.163	.111	.111	.111	.064	.064	.064	.020	.020	.020	
1.0	.179	.156	.136	.153	.134	.117	.105	.092	.081	.060	.053	.047	.019	.017	.015	
2.0	.171	.132	.099	.146	.114	.086	.100	.079	.060	.058	.046	.035	.019	.015	.011	
3.0	.163	.114	.075	.140	.099	.065	.096	.068	.046	.055	.040	.027	.018	.013	.009	
4.0	.155	.101	.059	.133	.087	.052	.092	.061	.036	.053	.036	.021	.017	.012	.007	
5.0	.148	.090	.048	.127	.078	.042	.087	.055	.029	.051	.032	.017	.016	.010	.006	
6.0	.141	.082	.040	.121	.071	.035	.084	.050	.024	.048	.029	.015	.016	.010	.005	
7.0	.134	.075	.034	.115	.065	.029	.080	.046	.021	.046	.027	.012	.015	.009	.004	
8.0	.128	.069	.029	.110	.060	.025	.076	.042	.018	.044	.025	.011	.014	.008	.004	
9.0	.122	.064	.025	.105	.056	.022	.073	.039	.016	.042	.023	.009	.014	.008	.003	
10.0	.116	.060	.023	.100	.052	.020	.069	.037	.014	.041	.022	.008	.013	.007	.003	

C Range: 0 - 360DEG
 C Interval: 15.0DEG
 Test Speed: HIGH
 Temperature:25.3°C
 Operators:DAMIN
 Test Date:2024-01-16

γ Range: 0 - 90DEG
 γ Interval: 1.0DEG
 Test System:EVERFINE GO-2000B_V1 SYSTEM V2.00.473
 Humidity:65.0%
 Test Distance:9.401m [K=1.0000]
 Remarks:

UGR(Unified Glare Rating) Table

Test:U:120.25V I:0.1314A P:15.574W PF:0.9857 Freq:50.00Hz										
Lamp Flux:1737.81x1 lm										
NAME:			TYPE:				WEIGHT:			
SPEC.:			DIM.:				SERIAL No.:			
MFR.: EVERFINE			SUR.: 129mm				Shielding Angle:			
ceiling/cavity	0.7	0.7	0.5	0.5	0.3	0.7	0.7	0.5	0.5	0.3
walls	0.5	0.3	0.5	0.3	0.3	0.5	0.3	0.5	0.3	0.3
working plane	0.2	0.2	0.2	0.2	0.2	0.2	0.2	0.2	0.2	0.2
Room dimensions	Viewed crosswise					Viewed endwise				
x = 2H y = 2H	14.5	16.0	14.7	16.2	16.4	14.2	15.7	14.5	15.9	16.1
3H	15.9	17.3	16.2	17.5	17.7	15.5	16.8	15.8	17.1	17.3
4H	16.4	17.8	16.8	18.0	18.3	15.9	17.2	16.2	17.5	17.7
6H	16.8	18.0	17.1	18.3	18.6	16.1	17.3	16.4	17.6	17.9
8H	16.9	18.1	17.2	18.3	18.6	16.1	17.3	16.4	17.5	17.8
12H	16.9	18.0	17.2	18.3	18.6	16.0	17.2	16.4	17.5	17.8
4H 2H	15.0	16.3	15.3	16.6	16.8	14.8	16.1	15.1	16.3	16.6
3H	16.6	17.7	17.0	18.0	18.3	16.2	17.4	16.6	17.7	18.0
4H	17.3	18.3	17.6	18.6	19.0	16.8	17.8	17.1	18.1	18.4
6H	17.7	18.6	18.1	19.0	19.4	17.0	17.9	17.4	18.3	18.7
8H	17.8	18.7	18.3	19.1	19.4	17.0	17.9	17.5	18.3	18.6
12H	17.9	18.7	18.3	19.0	19.4	17.0	17.8	17.4	18.2	18.6
8H 4H	17.4	18.3	17.9	18.7	19.0	17.0	17.8	17.4	18.2	18.6
6H	18.0	18.7	18.4	19.1	19.5	17.3	18.0	17.8	18.4	18.9
8H	18.2	18.8	18.6	19.2	19.7	17.4	18.0	17.8	18.4	18.9
12H	18.2	18.8	18.7	19.2	19.7	17.4	17.9	17.8	18.3	18.8
12H 4H	17.4	18.2	17.8	18.6	19.0	17.0	17.8	17.4	18.1	18.5
6H	18.0	18.6	18.5	19.1	19.5	17.4	18.0	17.8	18.4	18.9
8H	18.2	18.7	18.7	19.2	19.7	17.4	17.9	17.9	18.4	18.9
Variations with the observer position at spacings(CIE Pub.117):										
S = 1.0H	+ 0.2 / - 0.2					+ 0.2 / - 0.3				
1.5H	+ 0.2 / - 0.3					+ 0.2 / - 0.4				
2.0H	+ 0.3 / - 0.3					+ 0.3 / - 0.4				

CIE Pub.117, 1738 lm Total Lamp Luminous Flux Correct (8log(F/F0) = 1.9)
 Area: 0.2025 m2

C Range: 0 - 360DEG
 C Interval: 15.0DEG
 Test Speed: HIGH
 Temperature:25.3°C
 Operators:DAMIN
 Test Date:2024-01-16

γ Range: 0 - 90DEG
 γ Interval: 1.0DEG
 Test System:EVERFINE GO-2000B_V1 SYSTEM V2.00.473
 Humidity:65.0%
 Test Distance:9.401m [K=1.0000]
 Remarks:

UTILIZATION FACTORS TABLE

Test:U:120.25V I:0.1314A P:15.574W PF:0.9857 Freq:50.00Hz Lamp Flux:1737.81x1 lm		
NAME:	TYPE:	WEIGHT:
SPEC.:	DIM.:	SERIAL No.:
MFR.: EVERFINE	SUR.: 129mm	Shielding Angle:

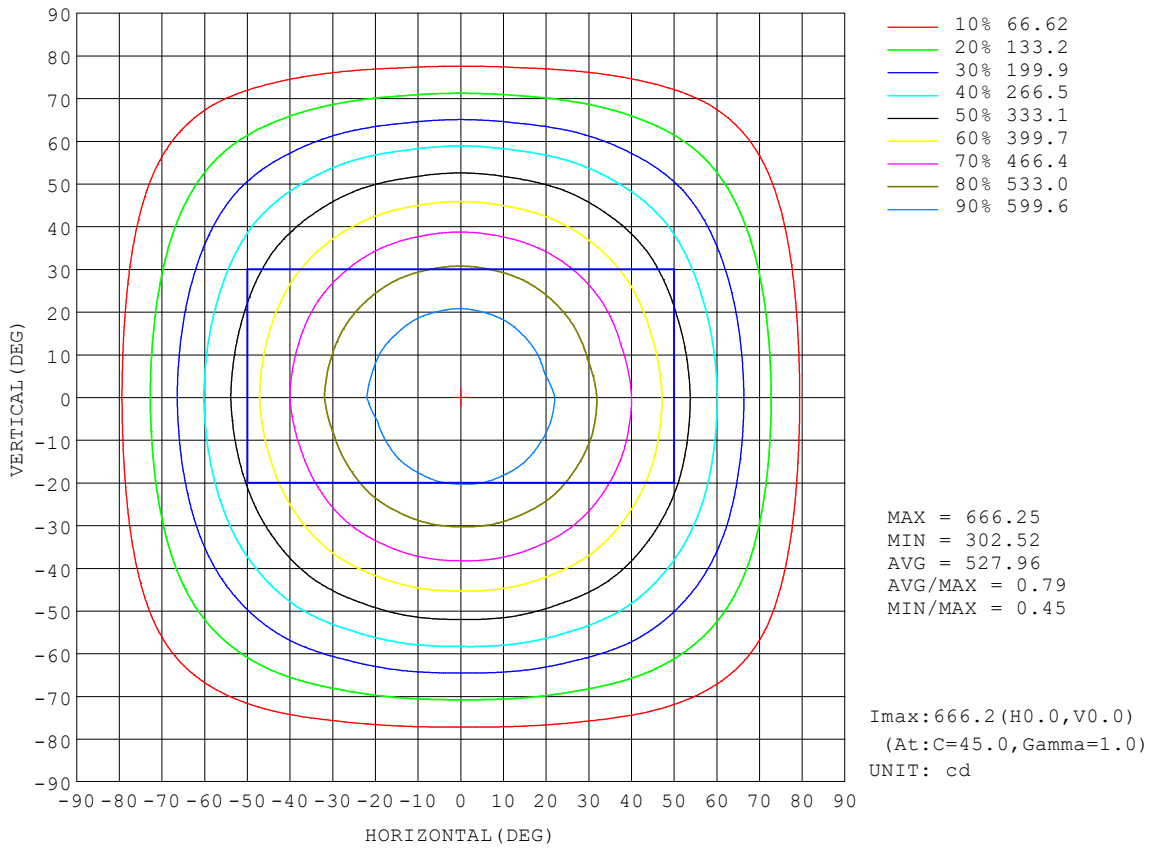
REFLECTANCE										
Ceiling	0.8	0.8	0.8	0.7	0.7	0.7	0.5	0.5	0.5	0
Walls	0.7	0.5	0.3	0.7	0.5	0.3	0.7	0.5	0.3	0
Working plane	0.2	0.2	0.2	0.2	0.2	0.2	0.2	0.2	0.2	0
ROOM INDEX	UTILIZATION FACTORS (PERCENT) $k(RI) \times RCR = 5$									
k = 0.60	59	47	41	58	47	41	57	47	40	34
0.80	69	58	50	68	57	50	66	56	50	43
1.00	77	67	59	76	66	59	74	67	59	52
1.25	84	74	67	83	74	67	80	72	66	59
1.50	89	80	73	88	79	73	85	77	72	64
2.00	96	88	82	94	87	81	91	85	79	72
2.50	100	92	87	98	91	86	94	88	84	76
3.00	103	97	91	101	95	90	97	92	88	80
4.00	107	102	97	105	100	96	100	97	93	84
5.00	109	105	101	107	103	99	102	99	96	87
ROOM INDEX	UF(total)									Direct
According to DIN EN 13032-2 2004			Suspended				SHRNOM = 1.25			

C Range: 0 - 360DEG
 C Interval: 15.0DEG
 Test Speed: HIGH
 Temperature:25.3°C
 Operators:DAMIN
 Test Date:2024-01-16

γ Range: 0 - 90DEG
 γ Interval: 1.0DEG
 Test System:EVERFINE GO-2000B_V1 SYSTEM V2.00.473
 Humidity:65.0%
 Test Distance:9.401m [K=1.0000]
 Remarks:

ISOCANDELA DIAGRAM

Test:U:120.25V I:0.1314A P:15.574W PF:0.9857 Freq:50.00Hz Lamp Flux:1737.81x1 lm		
NAME:	TYPE:	WEIGHT:
SPEC.:	DIM.:	SERIAL No.:
MFR.: EVERFINE	SUR.: 129mm	Shielding Angle:

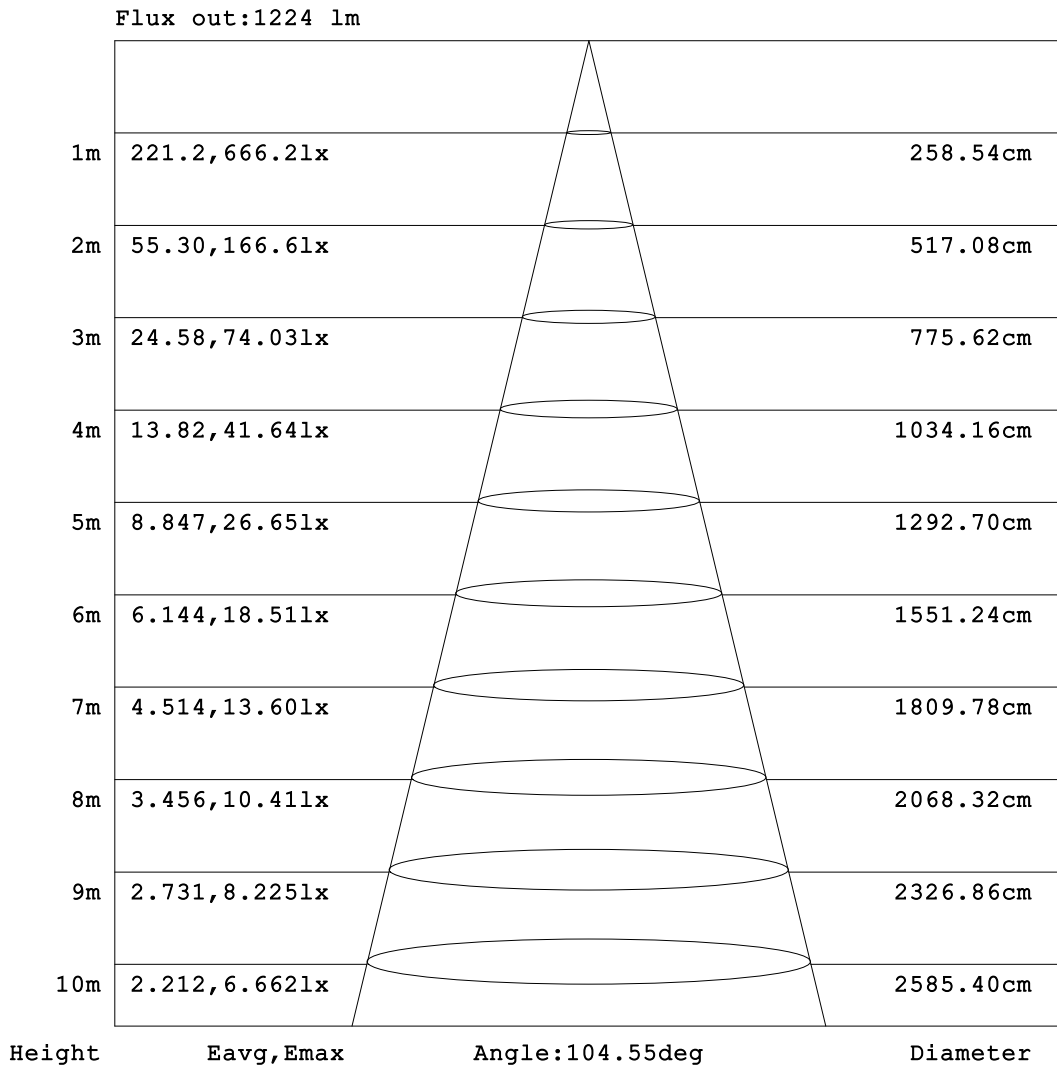


C Range: 0 - 360DEG
 C Interval: 15.0DEG
 Test Speed: HIGH
 Temperature: 25.3°C
 Operators: DAMIN
 Test Date: 2024-01-16

γ Range: 0 - 90DEG
 γ Interval: 1.0DEG
 Test System: EVERFINE GO-2000B_V1 SYSTEM V2.00.473
 Humidity: 65.0%
 Test Distance: 9.401m [K=1.0000]
 Remarks:

AAI Figure

Test:U:120.25V I:0.1314A P:15.574W PF:0.9857 Freq:50.00Hz Lamp Flux:1737.81x1 lm		
NAME:	TYPE:	WEIGHT:
SPEC.:	DIM.:	SERIAL No.:
MFR.: EVERFINE	SUR.: 129mm	Shielding Angle:



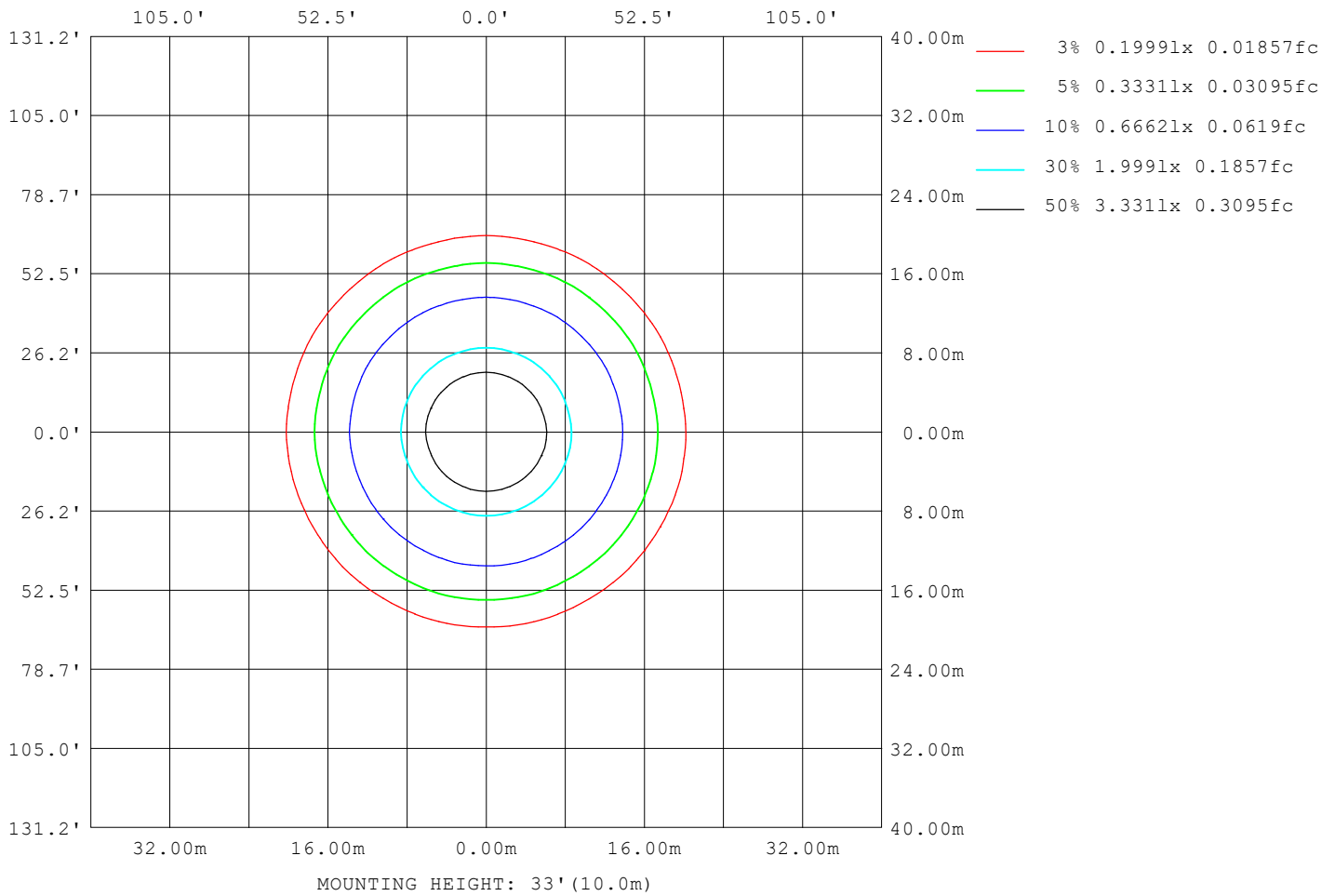
Note: The Curves indicate the illuminated area and the average illumination when the luminaire is at different distance.

C Range: 0 - 360DEG
 C Interval: 15.0DEG
 Test Speed: HIGH
 Temperature: 25.3°C
 Operators: DAMIN
 Test Date: 2024-01-16

γ Range: 0 - 90DEG
 γ Interval: 1.0DEG
 Test System: EVERFINE GO-2000B_V1 SYSTEM V2.00.473
 Humidity: 65.0%
 Test Distance: 9.401m [K=1.0000]
 Remarks:

ISOLUX DIAGRAM

Test:U:120.25V I:0.1314A P:15.574W PF:0.9857 Freq:50.00Hz Lamp Flux:1737.81x1 lm		
NAME:	TYPE:	WEIGHT:
SPEC.:	DIM.:	SERIAL No.:
MFR.: EVERFINE	SUR.: 129mm	Shielding Angle:



C Range: 0 - 360DEG
 C Interval: 15.0DEG
 Test Speed: HIGH
 Temperature:25.3°C
 Operators:DAMIN
 Test Date:2024-01-16

γ Range: 0 - 90DEG
 γ Interval: 1.0DEG
 Test System:EVERFINE GO-2000B_V1 SYSTEM V2.00.473
 Humidity:65.0%
 Test Distance:9.401m [K=1.0000]
 Remarks:

LED Avg.L Report

Test:U:120.25V I:0.1314A P:15.574W PF:0.9857 Freq:50.00Hz Lamp Flux:1737.81x1 lm		
NAME:	TYPE:	WEIGHT:
SPEC.:	DIM.:	SERIAL No.:
MFR.: EVERFINE	SUR.: 129mm	Shielding Angle:

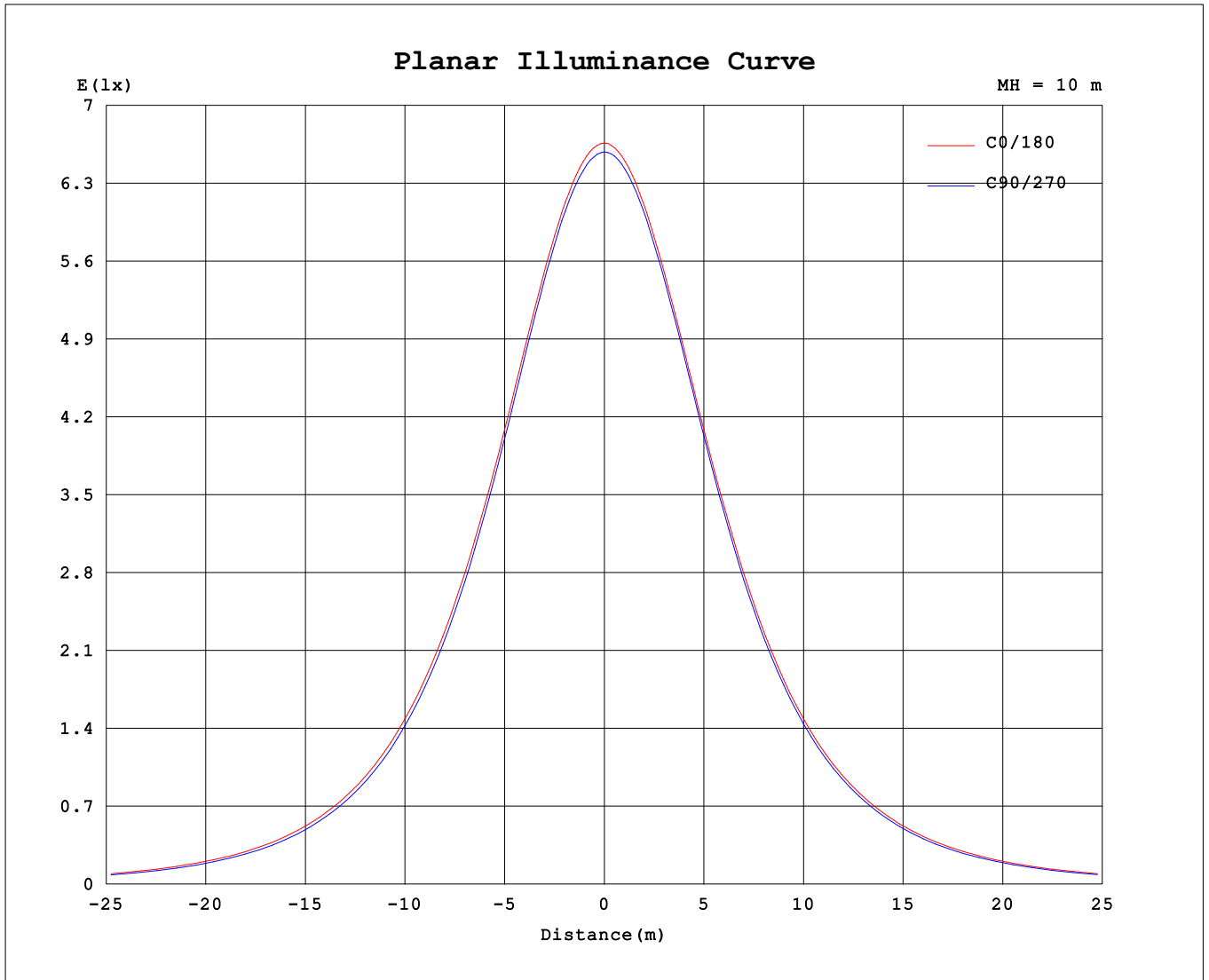
AvgL	cd/m2
L_0~180 (65) av	2482
L_0~180 (75) av	2077
L_0~180 (85) av	895
L_90~270 (65) av	2313
L_90~270 (75) av	1738
L_90~270 (85) av	251
L_45 (65) av	2391
L_45 (75) av	1900
L_45 (85) av	516

Standard: GB/T 29293-2012

C Range: 0 - 360DEG
 C Interval: 15.0DEG
 Test Speed: HIGH
 Temperature:25.3°C
 Operators:DAMIN
 Test Date:2024-01-16

γ Range: 0 - 90DEG
 γ Interval: 1.0DEG
 Test System:EVERFINE GO-2000B_V1 SYSTEM V2.00.473
 Humidity:65.0%
 Test Distance:9.401m [K=1.0000]
 Remarks:

Planar Illuminance Curve



C Range: 0 - 360DEG
 C Interval: 15.0DEG
 Test Speed: HIGH
 Temperature: 25.3°C
 Operators: DAMIN
 Test Date: 2024-01-16

γ Range: 0 - 90DEG
 γ Interval: 1.0DEG
 Test System: EVERFINE GO-2000B_V1 SYSTEM V2.00.473
 Humidity: 65.0%
 Test Distance: 9.401m [K=1.0000]
 Remarks:

