

Lightsource Test Report

Product Infomation

Product Type: OJL159-12W-3000K-RA80-35° Product Number: 5

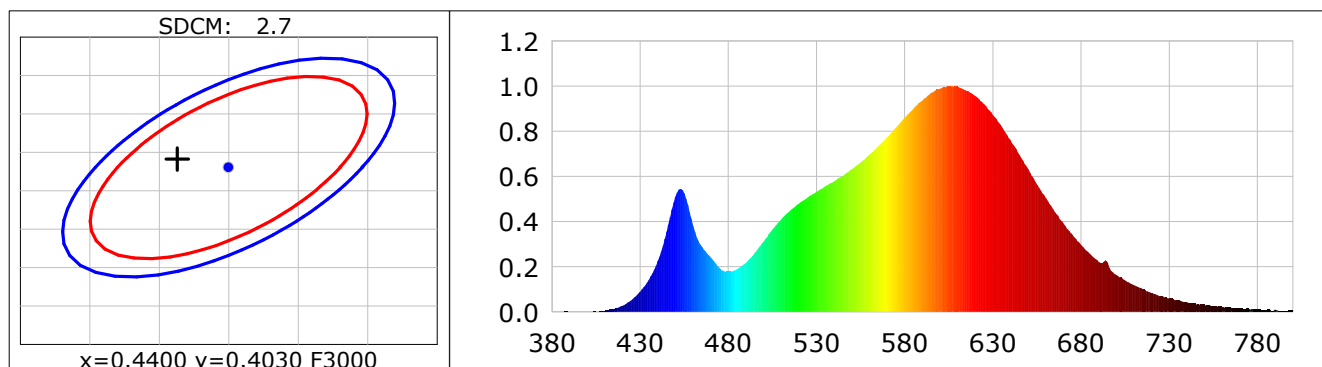
CIE Colorimetric Parameters

Chromaticity coordinates: $x=0.4363$ $y=0.4041$ $u(u')=0.2502$ $v=0.3475$ $v'(v)=0.5213$
 CCT: $T_c=3011K$ ($duv=0.00009$) Color Ratio: $R=0.231$ $G=0.744$ $B=0.025$
 Peak Wavelength: 606.9nm Half Bandwidth: 136.7nm
 Dominant Wavelength: 582.7nm Color Purity: 0.523
 CRI: $R_a=84.3$ TM30: $R_f=86$, $R_g=97$

| | | | | | | | |
|--------|--------|--------|--------|--------|--------|--------|--------|
| R1 =83 | R2 =91 | R3 =97 | R4 =83 | R5 =83 | R6 =89 | R7 =84 | R8 =64 |
| R9 =17 | R10=79 | R11=83 | R12=71 | R13=85 | R14=98 | R15=76 | |

 Color Quality Scale: $Q_a=83.7$, $Q_f=85.2$, $Q_p=85.3$, $Q_g=92.7$

| | | | | | | | |
|--------|--------|--------|--------|--------|--------|--------|--------|
| Q1 =80 | Q2 =96 | Q3 =83 | Q4 =81 | Q5 =84 | Q6 =85 | Q7 =84 | Q8 =87 |
| Q9 =96 | Q10=90 | Q11=87 | Q12=85 | Q13=85 | Q14=75 | Q15=77 | |



Photometric Parameters

Luminous Flux: 1050.83 lm Efficiency: 81.97 lm/W Radiant Power: 3.223 W
 EEI: 0.16 Energy Efficiency Class: A+ (EU 874-2012)

Electric Parameters

Voltage: 109.90V Current: 0.1170A Power: 12.82W
 Power Factor: -0.9930 Frequency: 49.99Hz

Test Infomation

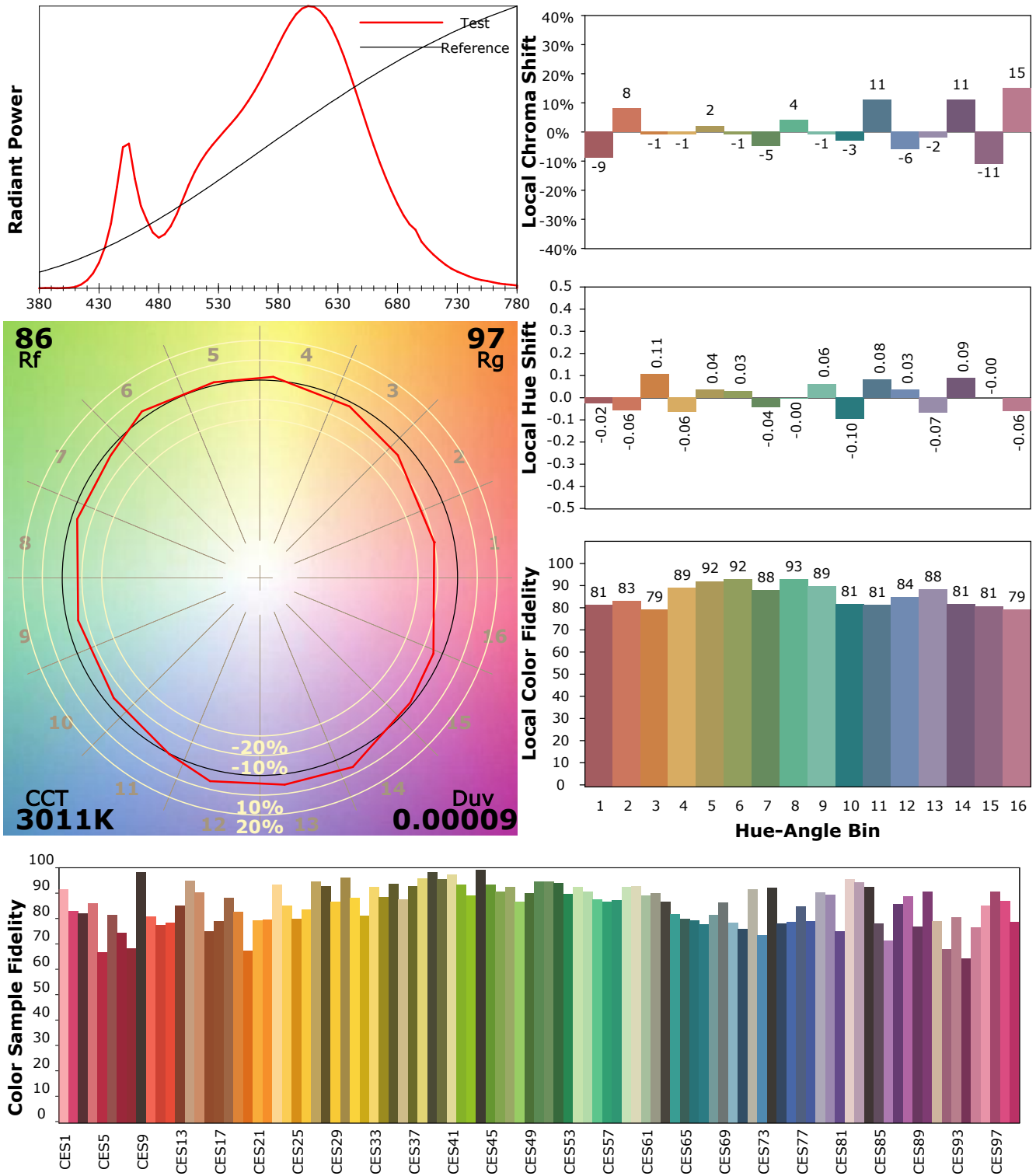
| | |
|-----------------------------|---|
| Scan Range: 380~800:1nm | Photometric Method: sphere-spectroradiometer |
| Stabilization Time: 0 Sec | Photometric Condition: Sphere diameter: 1.50m, 4π |
| Max of Signal: 45883 (2556) | CCD Integration Time: 325.87 ms |

IES TM-30-18 Color Rendition Report

Product Information

Product Type: OJL159-12W-3000K-RA80-35°

Product Number: 5



Condition: Tx:26.9°C, Ti:26.6°C, R.H.:60%
 Test Lab:
 Operator:

Test Device: Inventfine CMS-2S (Plus)
 Test Time: 2021-10-12 15:01:07
 Inspector: