

Lightsource Test Report

Product Infomation

Product Type: OJL158-12W-3000K-RA80-35° Product Number: 1

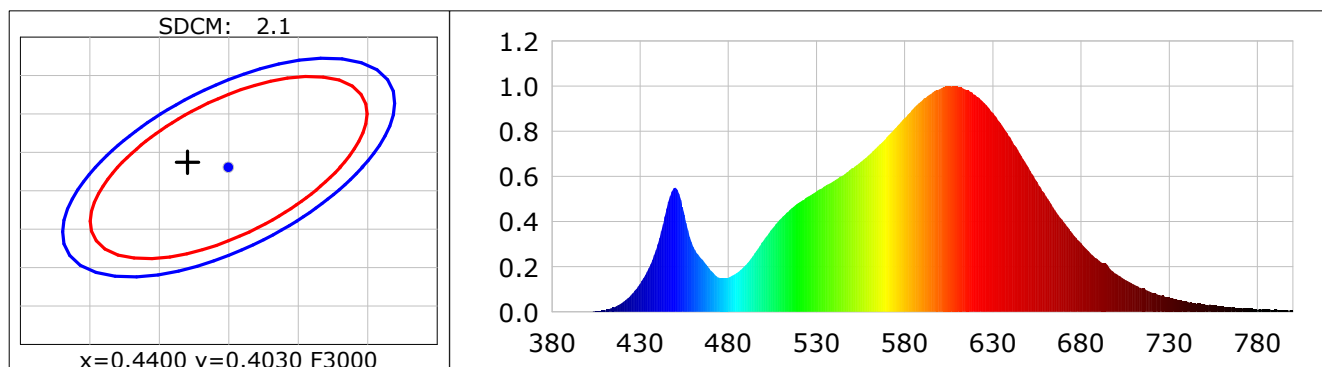
CIE Colorimetric Parameters

Chromaticity coordinates: $x=0.4370$ $y=0.4037$ $u(u')=0.2508$ $v=0.3475$ $v'=0.5212$
 CCT: $T_c=2995K$ ($duv=-0.00018$) Color Ratio: $R=0.232$ $G=0.745$ $B=0.023$
 Peak Wavelength: 607.3nm Half Bandwidth: 137.8nm
 Dominant Wavelength: 582.9nm Color Purity: 0.524
 CRI: $R_a=84.0$ TM30: $R_f=85$, $R_g=98$

R1 =83	R2 =90	R3 =96	R4 =84	R5 =83	R6 =88	R7 =85	R8 =64
R9 =17	R10=77	R11=83	R12=72	R13=84	R14=98	R15=76	

 Color Quality Scale: $Q_a=83.3$, $Q_f=84.6$, $Q_p=85.5$, $Q_g=93.9$

Q1 =79	Q2 =96	Q3 =82	Q4 =81	Q5 =84	Q6 =83	Q7 =83	Q8 =87
Q9 =96	Q10=89	Q11=86	Q12=85	Q13=84	Q14=75	Q15=76	



Photometric Parameters

Luminous Flux: 1219.01 lm Efficiency: 95.16 lm/W Radiant Power: 3.752 W
 EEI: 0.14 Energy Efficiency Class: A+ (EU 874-2012)

Electric Parameters

Voltage: 110.00V Current: 0.1170A Power: 12.81W
 Power Factor: -0.9940 Frequency: 49.99Hz

Test Infomation

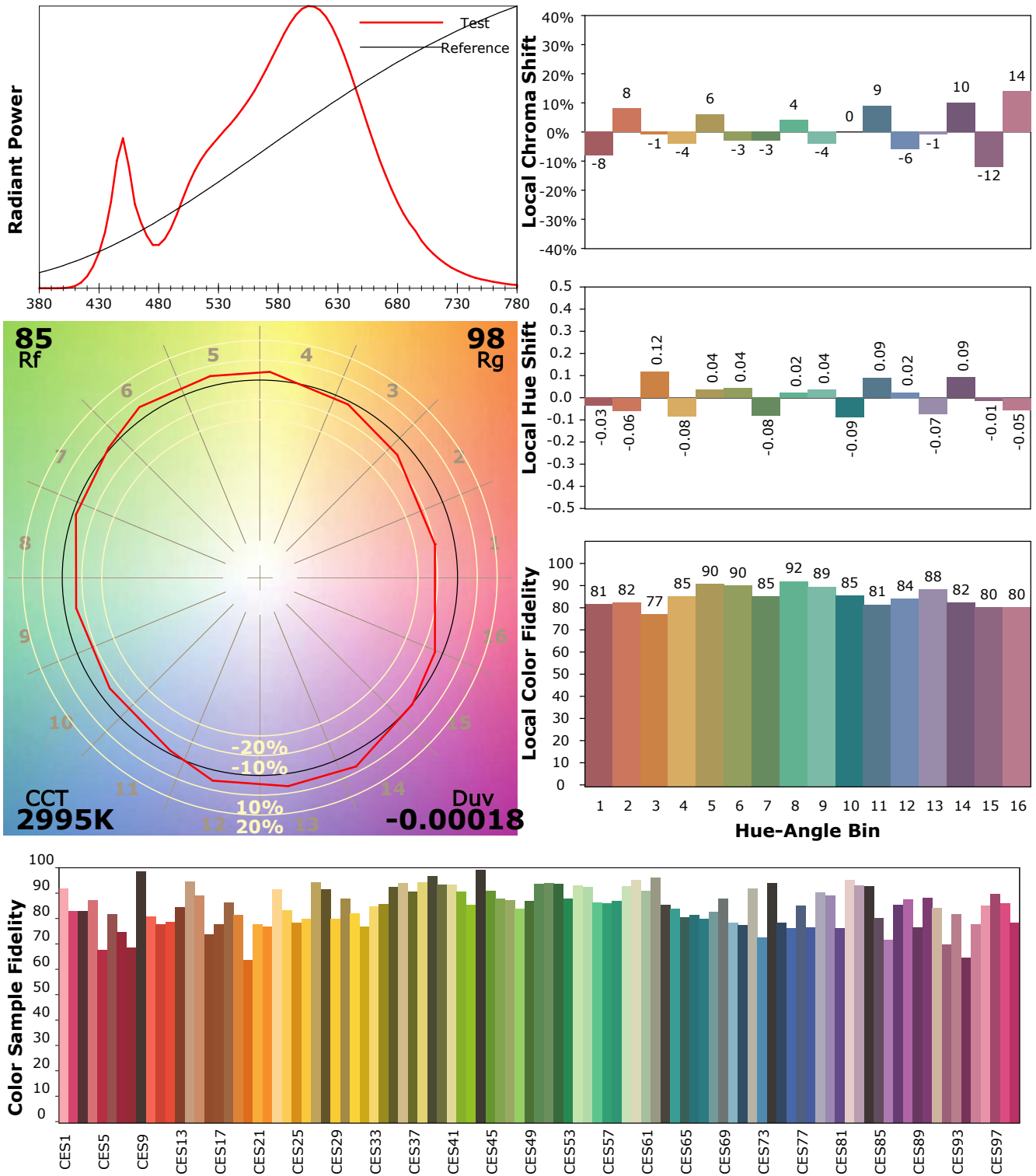
Scan Range: 380~800:1nm	Photometric Method: sphere-spectroradiometer
Stabilization Time: 0 Sec	Photometric Condition: Sphere diameter: 1.50m, 4π
Max of Signal: 45785 (2559)	CCD Integration Time: 281.08 ms

IES TM-30-18 Color Rendition Report

Product Information

Product Type: OJL158-12W-3000K-RA80-35°

Product Number: 1



Condition: Tx:27.0°C, Ti:25.1°C, R.H.:60%
 Test Lab:
 Operator:

Test Device: Inventfine CMS-2S (Plus)
 Test Time: 2021-10-12 09:21:28
 Inspector: