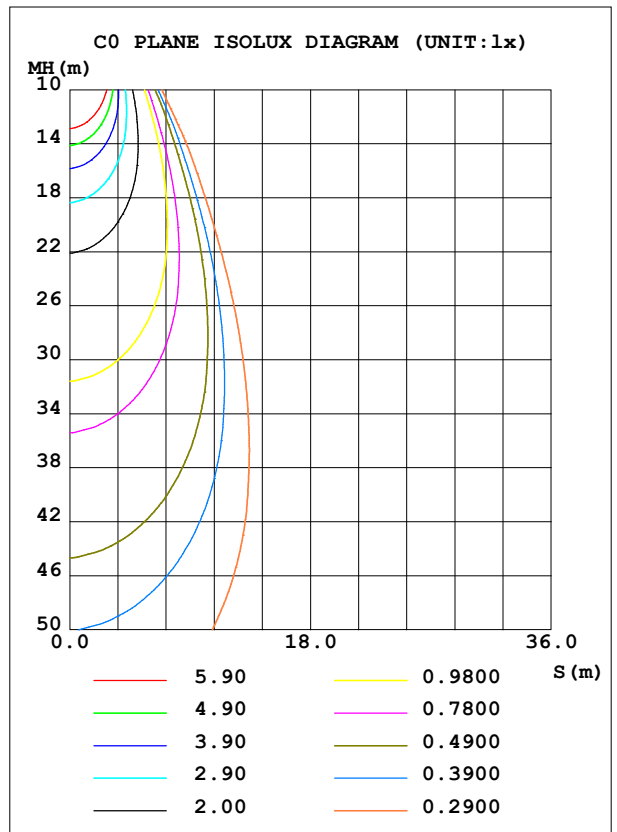
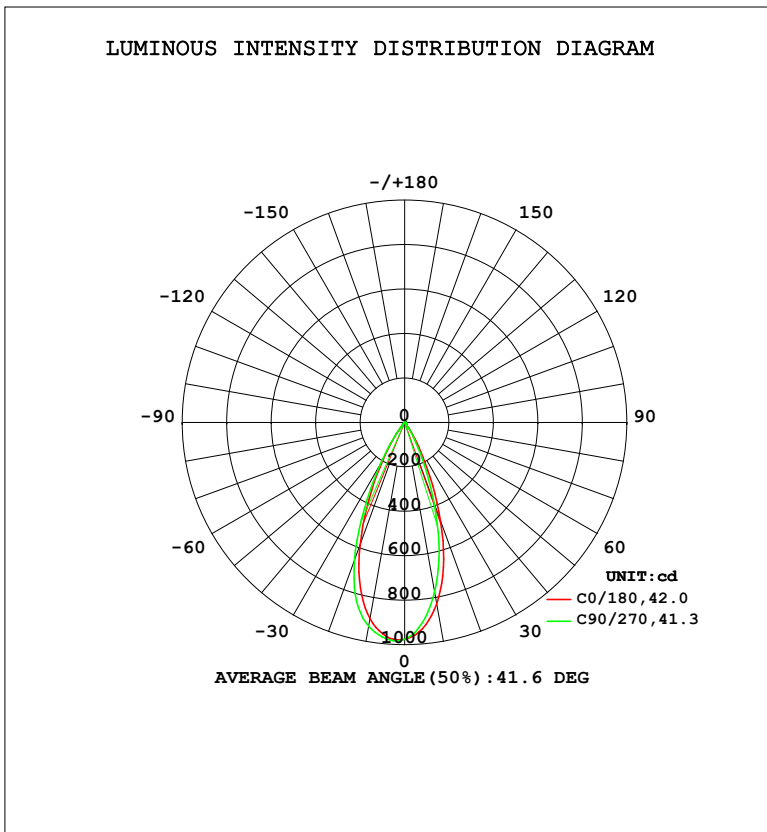


LUMINAIRE PHOTOMETRIC TEST REPORT

Test:U:18.04V I:0.3500A P:6.314W PF:1.0000 Freq:0Hz Lamp Flux:487.477x1 lm		
NAME: ALDL0911 3000K 38	TYPE:	WEIGHT:
SPEC.:	DIM.:	SERIAL No.:
MFR.: Alpha	SUR.:	Shielding Angle:

DATA OF LAMP		PHOTOMETRIC DATA			
MODEL	ALDL0911	Imax (cd)	984.1	S/MH (C0/180)	0.70
NOMINAL POWER (W)	7	LOR (%)	100.0	S/MH (C90/270)	0.72
RATED VOLTAGE (V)		TOTAL FLUX (lm)	487.48	η UP, DN (C0-180)	0.0, 42.0
NOMINAL FLUX (lm)	487.477	CIE CLASS	DIRECT	η UP, DN (C180-360)	0.1, 57.9
LAMPS INSIDE	1	η up (%)	0.1	CIBSE SHR NOM	0.50
TEST VOLTAGE (V)		η down (%)	99.9	CIBSE SHR MAX	0.70



C Range: 0 - 360DEG
 C Interval: 22.5DEG
 Test Speed: HIGH
 Temperature: 25.2 °C
 Operators: Brooke
 Test Date: 2022-05-06

γ Range: 0 - 180DEG
 γ Interval: 1.0DEG
 Test System: EVERFINE GO-R5000_V2 SYSTEM V2.00.459
 Humidity: 55.0%
 Test Distance: 2.900m [K=0.8817]
 Remarks:

ZONAL FLUX DIAGRAM

ZONAL FLUX DIAGRAM:

γ	C0	C45	C90	C135	C180	C225	C270	C315	γ	Φ zone	Φ total	%lum, lamp
10	829.7	780.0	776.3	828.2	897.0	932.9	930.8	896.9	0- 10	87.38	87.38	17.9,17.9
20	474.6	402.8	391.5	465.2	587.6	664.7	662.3	593.6	10- 20	196.8	284.2	58.3,58.3
30	127.8	98.42	94.29	128.2	200.3	242.0	225.3	187.5	20- 30	148.9	433.1	88.8,88.8
40	16.54	13.79	14.06	18.02	27.46	33.06	30.35	23.79	30- 40	44.71	477.8	98,98
50	2.934	2.340	2.472	3.323	4.750	5.413	4.952	3.973	40- 50	7.627	485.4	99.6,99.6
60	0.2912	0.2747	0.2770	0.3146	0.3472	0.4139	0.3484	0.3387	50- 60	1.269	486.7	99.8,99.8
70	0.0701	0.0736	0.0738	0.0759	0.0656	0.0625	0.0536	0.0585	60- 70	0.1532	486.9	99.9,99.9
80	0.0085	0.0140	0.0184	0.0154	0.0054	0.0094	0.0060	0.0094	70- 80	0.0357	486.9	99.9,99.9
90	0	0	0	0	0	0	0	0	80- 90	0.0023	486.9	99.9,99.9
100	0	0	0	0	0	0	0	0	90-100	0	486.9	99.9,99.9
110	0	0	0	0	0	0	0	0	100-110	0	486.9	99.9,99.9
120	0	0.0001	0.0000	0	0.0000	0	0	0.0004	110-120	0.0000	486.9	99.9,99.9
130	0.0402	0.0450	0.0415	0.0384	0.0470	0.0374	0.0364	0.0479	120-130	0.0133	486.9	99.9,99.9
140	0.1336	0.1319	0.1228	0.1343	0.2227	0.1829	0.1590	0.2081	130-140	0.0729	487.0	99.9,99.9
150	0.2161	0.2087	0.1851	0.2307	0.4415	0.4013	0.3286	0.4121	140-150	0.1462	487.1	99.9,99.9
160	0.3014	0.2858	0.2748	0.3271	0.5965	0.5899	0.5120	0.5558	150-160	0.1720	487.3	100,100
170	0.3100	0.2888	0.3107	0.3549	0.5581	0.5625	0.5367	0.5554	160-170	0.1245	487.4	100,100
180	0.4075	0.4058	0.4423	0.4462	0.4036	0.3925	0.4222	0.4472	170-180	0.0407	487.5	100,100
DEG	LUMINOUS INTENSITY:cd									UNIT:lm		

Conical surface Flux(90deg): 483.02 lm

%lum = 99.1%

%lamp = 99.1%

Conical surface Flux(120deg): 486.72 lm

%lum = 99.8%

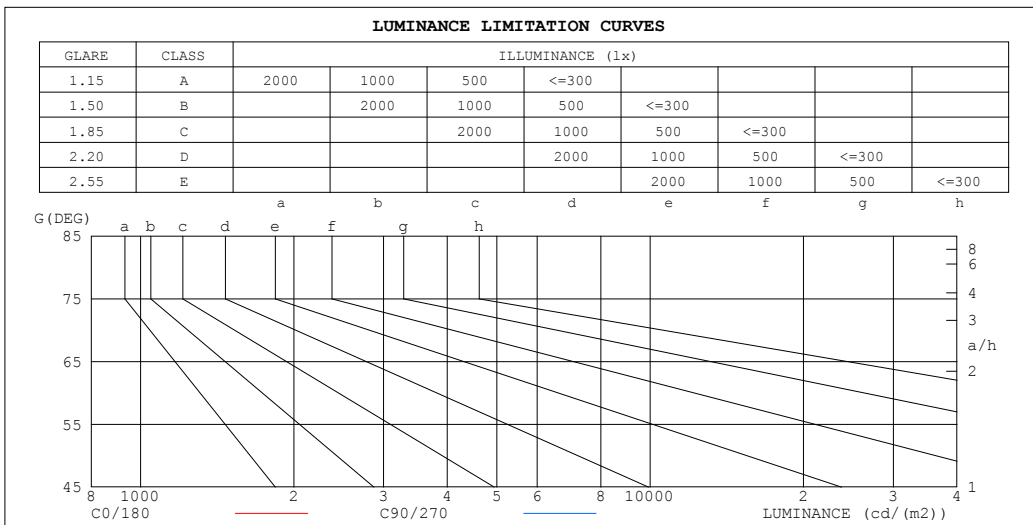
%lamp = 99.8%

C Range: 0 - 360DEG
 C Interval: 22.5DEG
 Test Speed: HIGH
 Temperature:25.2℃
 Operators:Brooke
 Test Date:2022-05-06

γ Range: 0 - 180DEG
 γ Interval: 1.0DEG
 Test System:EVERFINE GO-R5000_V2 SYSTEM V2.00.459
 Humidity:55.0%
 Test Distance:2.900m [K=0.8817]
 Remarks:

LUMINANCE LIMITATION CURVES

Test:U:18.04V I:0.3500A P:6.314W PF:1.0000 Freq:0Hz Lamp Flux:487.477x1 lm		
NAME: ALDL0911 3000K 38	TYPE:	WEIGHT:
SPEC.:	DIM.:	SERIAL No.:
MFR.: Alpha	SUR.:	Shielding Angle:



LUMINANCE cd/(m2)		
G (DEG)	C0/180	C90/270
85	0	0
80	0	0
75	0	0
70	0	0
65	0	0
60	1	1
55	2	2
50	6	5
45	14	13

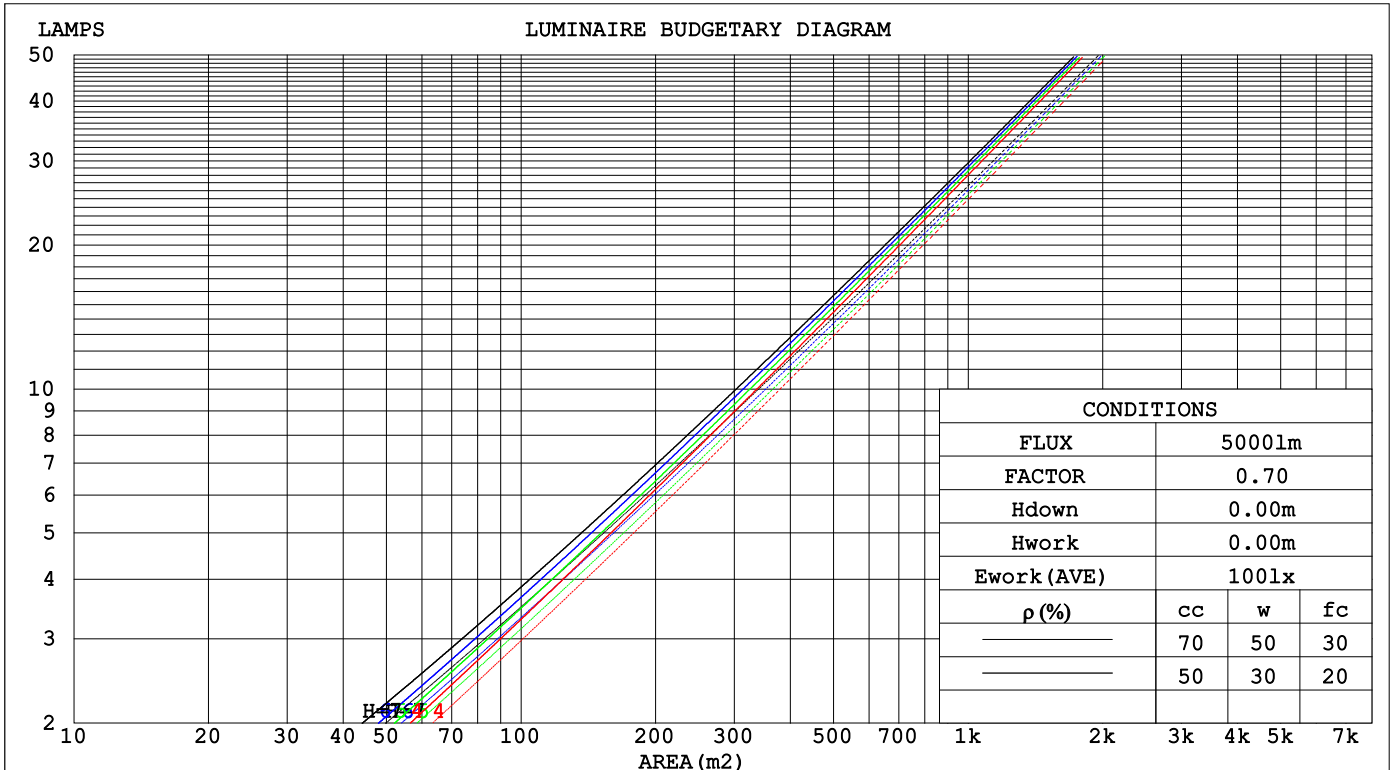
C Range: 0 - 360DEG
 C Interval: 22.5DEG
 Test Speed: HIGH
 Temperature: 25.2°C
 Operators: Brooke
 Test Date: 2022-05-06

γ Range: 0 - 180DEG
 γ Interval: 1.0DEG
 Test System: EVERFINE GO-R5000_V2 SYSTEM V2.00.459
 Humidity: 55.0%
 Test Distance: 2.900m [K=0.8817]
 Remarks:

CU AND LUMINAIRE BUDGETARY ESTIMATE DIAGRAM

Test:U:18.04V I:0.3500A P:6.314W PF:1.0000 Freq:0Hz Lamp Flux:487.477x1 lm		
NAME: ALDL0911 3000K 38	TYPE:	WEIGHT:
SPEC.:	DIM.:	SERIAL No.:
MFR.: Alpha	SUR.:	Shielding Angle:

pcc	80%			70%			50%			30%			10%			0
pw	50%	30%	10%	50%	30%	10%	50%	30%	10%	50%	30%	10%	50%	30%	10%	0
pfc	20%			20%			20%			20%			20%			0
RCR	RCR:Room Cavity Ratio						Coefficients of Utilization(CU)									
0.0	1.19	1.19	1.19	1.16	1.16	1.16	1.11	1.11	1.11	1.06	1.06	1.06	1.02	1.02	1.02	.00
1.0	1.12	1.10	1.08	1.10	1.08	1.06	1.06	1.04	1.03	1.02	1.01	.00	.99	.98	.97	.95
2.0	1.05	1.02	.99	1.04	1.01	.98	1.01	.98	.96	.98	.96	.94	.95	.93	.92	.90
3.0	.00	.96	.92	.98	.95	.91	.96	.93	.90	.94	.91	.89	.91	.89	.87	.86
4.0	.95	.90	.86	.94	.89	.86	.91	.88	.85	.90	.86	.84	.88	.85	.83	.82
5.0	.90	.85	.81	.89	.84	.81	.87	.83	.80	.86	.82	.80	.84	.81	.79	.78
6.0	.86	.81	.77	.85	.80	.77	.83	.79	.76	.82	.79	.76	.81	.78	.75	.74
7.0	.82	.77	.73	.81	.76	.73	.80	.76	.73	.79	.75	.72	.78	.74	.72	.71
8.0	.78	.73	.70	.78	.73	.69	.77	.72	.69	.76	.72	.69	.75	.71	.69	.67
9.0	.75	.70	.66	.74	.70	.66	.73	.69	.66	.73	.69	.66	.72	.68	.66	.65
10.0	.72	.67	.64	.71	.67	.63	.71	.66	.63	.70	.66	.63	.69	.66	.63	.62



C Range: 0 - 360DEG
 C Interval: 22.5DEG
 Test Speed: HIGH
 Temperature:25.2°C
 Operators:Brooke
 Test Date:2022-05-06

γ Range: 0 - 180DEG
 γ Interval: 1.0DEG
 Test System:EVERFINE GO-R5000_V2 SYSTEM V2.00.459
 Humidity:55.0%
 Test Distance:2.900m [K=0.8817]
 Remarks:

WEC AND CCEC

Test:U:18.04V I:0.3500A P:6.314W PF:1.0000 Freq:0Hz Lamp Flux:487.477x1 lm		
NAME: ALDL0911 3000K 38	TYPE:	WEIGHT:
SPEC.:	DIM.:	SERIAL No.:
MFR.: Alpha	SUR.:	Shielding Angle:

ρ _{cc}	80%			70%			50%			30%			10%			0
ρ _w	50%	30%	10%	50%	30%	10%	50%	30%	10%	50%	30%	10%	50%	30%	10%	0
ρ _{fc}	20%			20%			20%			20%			20%			0
RCR	RCR:Room Cavity Ratio						Wall Exitance Coefficients(WEC)									
0.0																
1.0	.156	.089	.028	.149	.085	.027	.137	.078	.025	.125	.072	.023	.115	.066	.021	
2.0	.147	.081	.025	.142	.078	.024	.131	.073	.023	.121	.068	.021	.113	.064	.020	
3.0	.139	.074	.022	.134	.072	.022	.126	.068	.021	.117	.064	.020	.110	.061	.019	
4.0	.132	.068	.020	.128	.067	.020	.120	.064	.019	.113	.061	.018	.107	.058	.018	
5.0	.125	.064	.019	.122	.063	.018	.115	.060	.018	.109	.058	.017	.104	.055	.017	
6.0	.120	.060	.017	.117	.059	.017	.111	.057	.017	.106	.055	.016	.101	.053	.016	
7.0	.114	.057	.016	.112	.056	.016	.107	.054	.016	.102	.052	.015	.098	.051	.015	
8.0	.110	.054	.015	.107	.053	.015	.103	.051	.015	.099	.050	.014	.095	.049	.014	
9.0	.105	.051	.014	.103	.050	.014	.099	.049	.014	.095	.048	.014	.092	.047	.013	
10.0	.101	.048	.013	.099	.048	.013	.096	.047	.013	.092	.046	.013	.089	.045	.013	

ρ _{cc}	80%			70%			50%			30%			10%			0
ρ _w	50%	30%	10%	50%	30%	10%	50%	30%	10%	50%	30%	10%	50%	30%	10%	0
ρ _{fc}	20%			20%			20%			20%			20%			0
RCR	RCR:Room Cavity Ratio						Ceiling Cavity Exitance Coefficients(CCEC)									
0.0	.191	.191	.191	.164	.164	.164	.112	.112	.112	.064	.064	.064	.021	.021	.021	
1.0	.171	.158	.147	.146	.136	.127	.100	.094	.088	.057	.054	.051	.018	.017	.017	
2.0	.154	.134	.116	.132	.115	.101	.090	.080	.070	.052	.046	.041	.017	.015	.013	
3.0	.140	.114	.094	.120	.099	.081	.082	.069	.057	.048	.040	.034	.015	.013	.011	
4.0	.129	.099	.077	.111	.086	.067	.076	.060	.047	.044	.035	.028	.014	.011	.009	
5.0	.119	.087	.064	.102	.076	.055	.071	.053	.039	.041	.031	.023	.013	.010	.008	
6.0	.111	.078	.054	.096	.067	.047	.066	.047	.033	.038	.028	.020	.012	.009	.006	
7.0	.104	.070	.046	.090	.061	.040	.062	.042	.028	.036	.025	.017	.012	.008	.006	
8.0	.098	.063	.039	.085	.055	.034	.059	.039	.024	.034	.023	.014	.011	.007	.005	
9.0	.093	.058	.034	.080	.050	.030	.056	.035	.021	.032	.021	.013	.011	.007	.004	
10.0	.089	.054	.030	.076	.046	.026	.053	.033	.019	.031	.019	.011	.010	.006	.004	

C Range: 0 - 360DEG
 C Interval: 22.5DEG
 Test Speed: HIGH
 Temperature:25.2℃
 Operators:Brooke
 Test Date:2022-05-06

γ Range: 0 - 180DEG
 γ Interval: 1.0DEG
 Test System:EVERFINE GO-R5000_V2 SYSTEM V2.00.459
 Humidity:55.0%
 Test Distance:2.900m [K=0.8817]
 Remarks:

UGR(Unified Glare Rating) Table

Test:U:18.04V I:0.3500A P:6.314W PF:1.0000 Freq:0Hz										
Lamp Flux:487.477x1 lm										
NAME: ALDL0911 3000K 38					TYPE:			WEIGHT:		
SPEC.:					DIM.:			SERIAL No.:		
MFR.: Alpha					SUR.:			Shielding Angle:		
ceiling/cavity	0.7	0.7	0.5	0.5	0.3	0.7	0.7	0.5	0.5	0.3
walls	0.5	0.3	0.5	0.3	0.3	0.5	0.3	0.5	0.3	0.3
working plane	0.2	0.2	0.2	0.2	0.2	0.2	0.2	0.2	0.2	0.2
Room dimensions	Viewed crosswise					Viewed endwise				
x = 2H y = 2H	-9.6	-8.8	-9.4	-8.7	-8.5	-11.2	-10.4	-11.0	-10.3	-10.1
3H	-9.8	-9.1	-9.6	-8.9	-8.7	-11.4	-10.6	-11.1	-10.4	-10.2
4H	-9.9	-9.2	-9.6	-9.0	-8.8	-11.4	-10.8	-11.2	-10.5	-10.3
6H	-10.0	-9.3	-9.7	-9.1	-8.8	-11.5	-10.9	-11.2	-10.6	-10.4
8H	-10.0	-9.4	-9.7	-9.1	-8.9	-11.6	-11.0	-11.3	-10.7	-10.4
12H	-10.1	-9.5	-9.7	-9.2	-8.9	-11.6	-11.0	-11.3	-10.8	-10.5
4H 2H	-9.9	-9.2	-9.6	-9.0	-8.8	-11.4	-10.8	-11.2	-10.5	-10.3
3H	-10.1	-9.5	-9.7	-9.2	-8.9	-11.6	-11.0	-11.3	-10.8	-10.5
4H	-10.2	-9.6	-9.8	-9.3	-9.0	-11.7	-11.2	-11.4	-10.9	-10.6
6H	-10.3	-9.8	-9.9	-9.4	-9.1	-11.8	-11.3	-11.4	-11.0	-10.7
8H	-10.3	-9.9	-9.9	-9.5	-9.1	-11.9	-11.4	-11.5	-11.1	-10.7
12H	-10.4	-9.9	-10.0	-9.6	-9.2	-11.9	-11.5	-11.5	-11.1	-10.7
8H 4H	-10.3	-9.9	-9.9	-9.5	-9.1	-11.9	-11.4	-11.5	-11.1	-10.7
6H	-10.4	-10.0	-10.0	-9.7	-9.2	-12.0	-11.6	-11.5	-11.2	-10.8
8H	-10.5	-10.1	-10.0	-9.7	-9.3	-12.0	-11.7	-11.6	-11.3	-10.8
12H	-10.5	-10.3	-10.1	-9.8	-9.3	-12.1	-11.8	-11.6	-11.4	-10.9
12H 4H	-10.4	-9.9	-10.0	-9.6	-9.2	-11.9	-11.5	-11.5	-11.1	-10.7
6H	-10.5	-10.1	-10.0	-9.7	-9.3	-12.0	-11.7	-11.6	-11.3	-10.8
8H	-10.5	-10.3	-10.1	-9.8	-9.3	-12.1	-11.8	-11.6	-11.4	-10.9
Variations with the observer position at spacings(CIE Pub.117):										
S = 1.0H	+ 4.3 / -15.9					+ 3.7 / -15.7				
1.5H	+ 6.5 / -13.2					+ 5.8 / -13.1				
2.0H	+ 7.3 / -12.6					+ 7.2 / -11.7				

CIE Pub.117, 487.5 lm Total Lamp Luminous Flux Corrected (8log(F/F0) = -2.5)
 Area: 0.72 m2

C Range: 0 - 360DEG
 C Interval: 22.5DEG
 Test Speed: HIGH
 Temperature:25.2℃
 Operators:Brooke
 Test Date:2022-05-06

γ Range: 0 - 180DEG
 γ Interval: 1.0DEG
 Test System:EVERFINE GO-R5000_V2 SYSTEM V2.00.459
 Humidity:55.0%
 Test Distance:2.900m [K=0.8817]
 Remarks:

UTILIZATION FACTORS TABLE

Test:U:18.04V I:0.3500A P:6.314W PF:1.0000 Freq:0Hz Lamp Flux:487.477x1 lm		
NAME: ALDL0911 3000K 38	TYPE:	WEIGHT:
SPEC.:	DIM.:	SERIAL No.:
MFR.: Alpha	SUR.:	Shielding Angle:

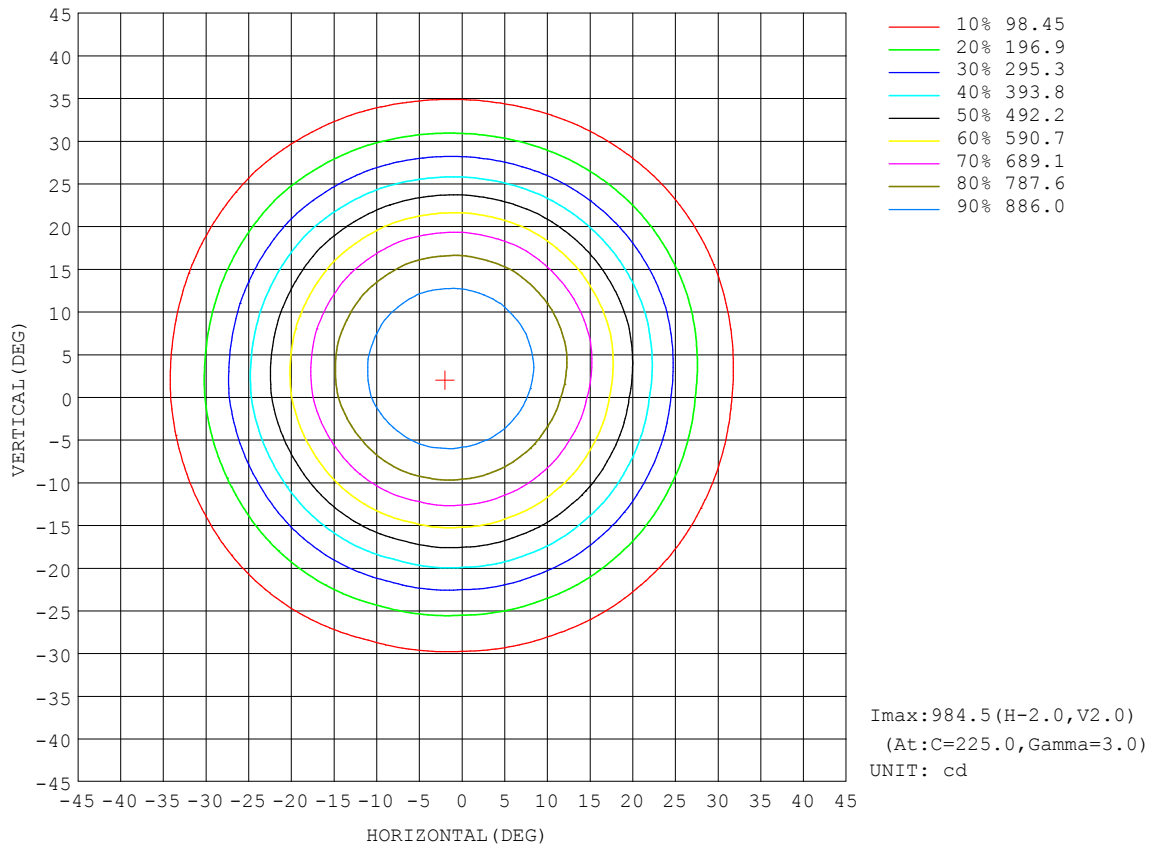
REFLECTANCE										
Ceiling	0.8	0.8	0.8	0.7	0.7	0.7	0.5	0.5	0.5	0
Walls	0.7	0.5	0.3	0.7	0.5	0.3	0.7	0.5	0.3	0
Working plane	0.2	0.2	0.2	0.2	0.2	0.2	0.2	0.2	0.2	0
ROOM INDEX	UTILIZATION FACTORS (PERCENT) $k(RI) \times RCR = 5$									
k = 0.60	90	85	81	90	84	81	89	84	81	78
0.80	97	92	89	97	92	89	96	91	88	85
1.00	101	96	93	100	96	93	99	95	92	88
1.25	105	100	97	104	100	97	102	98	96	92
1.50	107	103	100	106	102	100	104	101	98	94
2.00	110	106	103	108	105	102	106	103	101	96
2.50	111	108	105	110	106	104	106	104	102	96
3.00	112	109	107	111	108	106	107	105	104	97
4.00	114	112	110	112	110	108	109	107	106	99
5.00	116	114	112	113	112	110	110	108	107	100
ROOM INDEX	UF(total)									Direct
According to DIN EN 13032-2 2004			Suspended				SHRNOM = 1.25			

C Range: 0 - 360DEG
 C Interval: 22.5DEG
 Test Speed: HIGH
 Temperature:25.2°C
 Operators:Brooke
 Test Date:2022-05-06

γ Range: 0 - 180DEG
 γ Interval: 1.0DEG
 Test System:EVERFINE GO-R5000_V2 SYSTEM V2.00.459
 Humidity:55.0%
 Test Distance:2.900m [K=0.8817]
 Remarks:

ISOCANDELA DIAGRAM

Test:U:18.04V I:0.3500A P:6.314W PF:1.0000 Freq:0Hz Lamp Flux:487.477x1 lm		
NAME: ALDL0911 3000K 38	TYPE:	WEIGHT:
SPEC.:	DIM.:	SERIAL No.:
MFR.: Alpha	SUR.:	Shielding Angle:

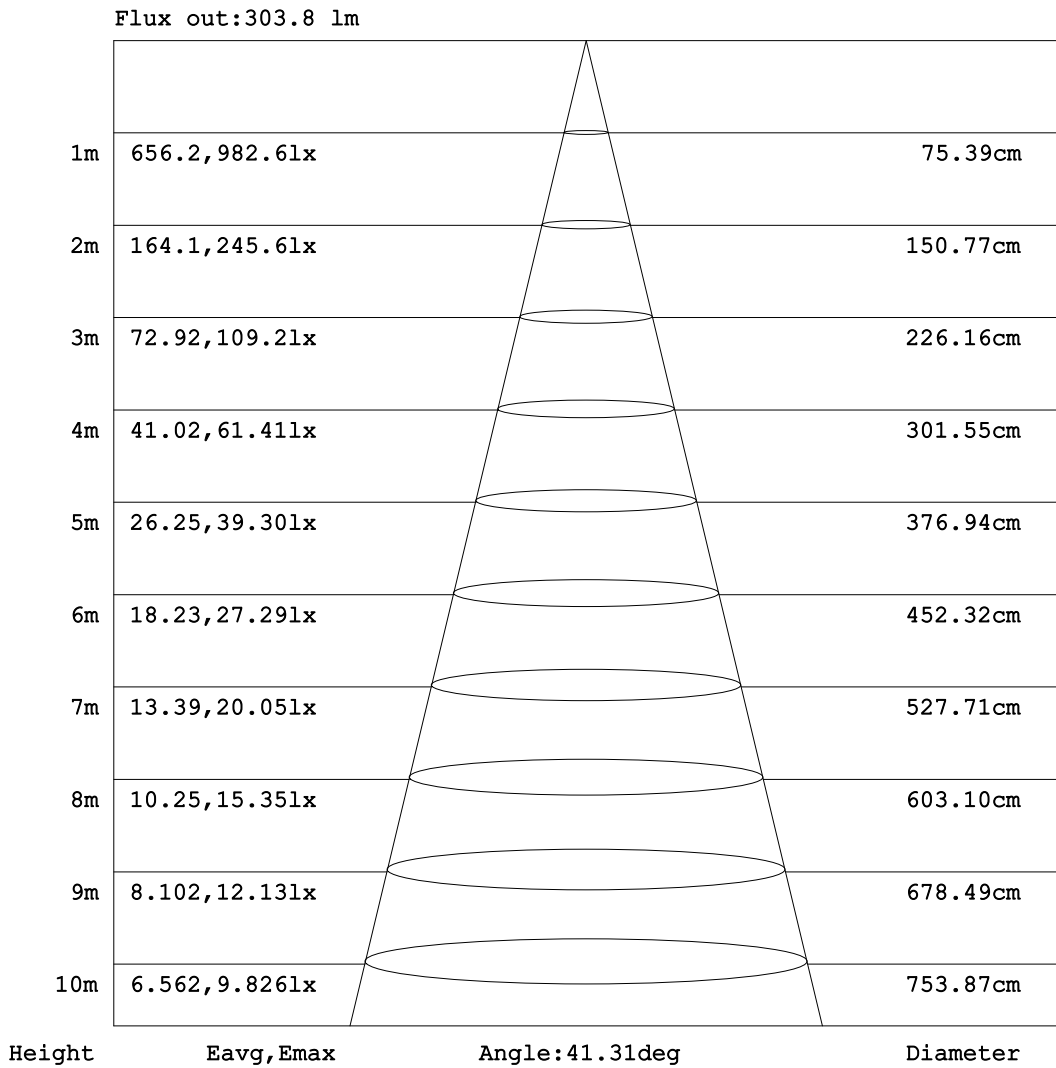


C Range: 0 - 360DEG
 C Interval: 22.5DEG
 Test Speed: HIGH
 Temperature: 25.2°C
 Operators: Brooke
 Test Date: 2022-05-06

γ Range: 0 - 180DEG
 γ Interval: 1.0DEG
 Test System: EVERFINE GO-R5000_V2 SYSTEM V2.00.459
 Humidity: 55.0%
 Test Distance: 2.900m [K=0.8817]
 Remarks:

AAI Figure

Test:U:18.04V I:0.3500A P:6.314W PF:1.0000 Freq:0Hz Lamp Flux:487.477x1 lm		
NAME: ALDL0911 3000K 38	TYPE:	WEIGHT:
SPEC.:	DIM.:	SERIAL No.:
MFR.: Alpha	SUR.:	Shielding Angle:



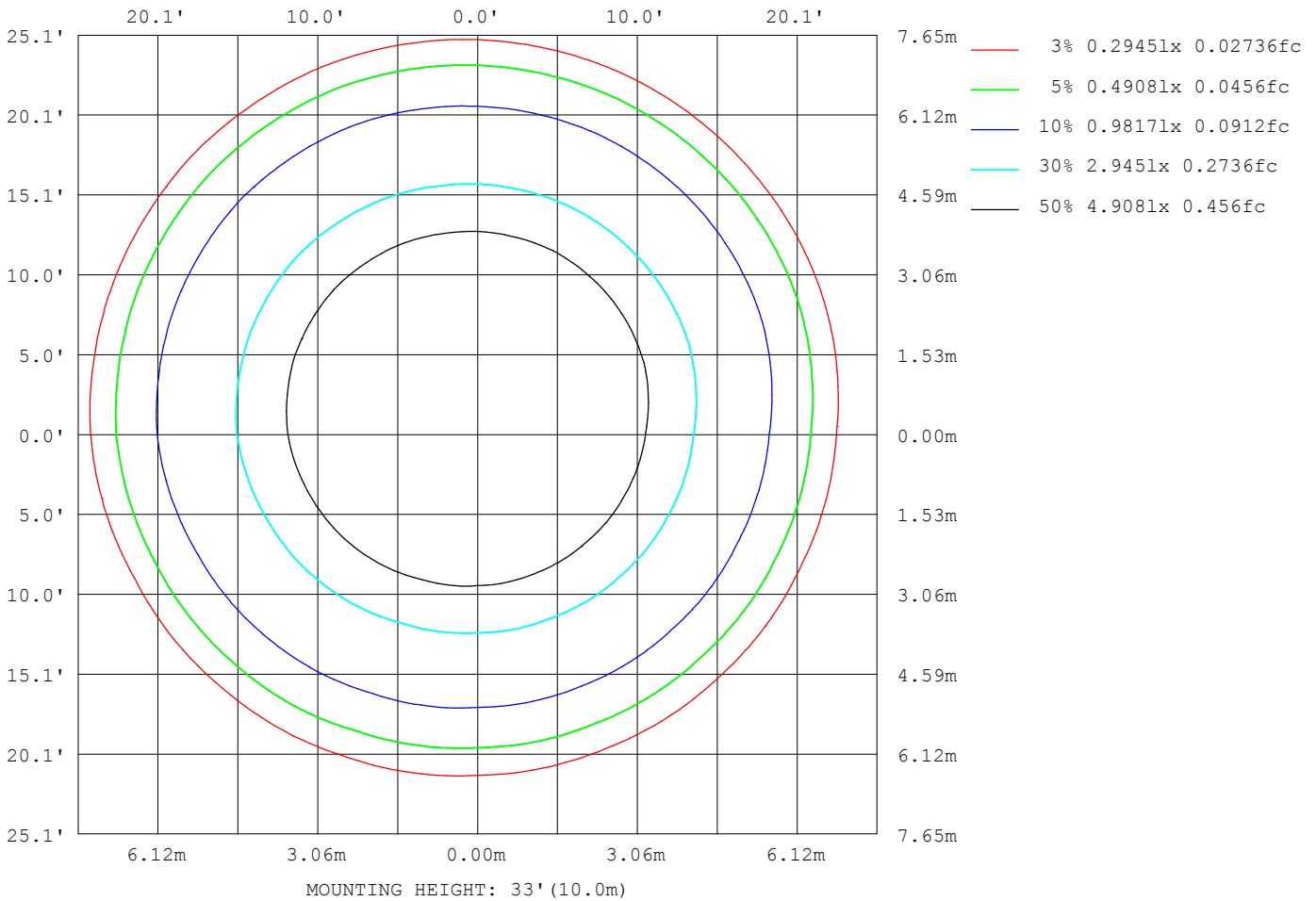
Note:The Curves indicate the illuminated area and the average illumination when the luminaire is at different distance.

C Range: 0 - 360DEG
 C Interval: 22.5DEG
 Test Speed: HIGH
 Temperature:25.2°C
 Operators:Brooke
 Test Date:2022-05-06

γ Range: 0 - 180DEG
 γ Interval: 1.0DEG
 Test System:EVERFINE GO-R5000_V2 SYSTEM V2.00.459
 Humidity:55.0%
 Test Distance:2.900m [K=0.8817]
 Remarks:

ISOLUX DIAGRAM

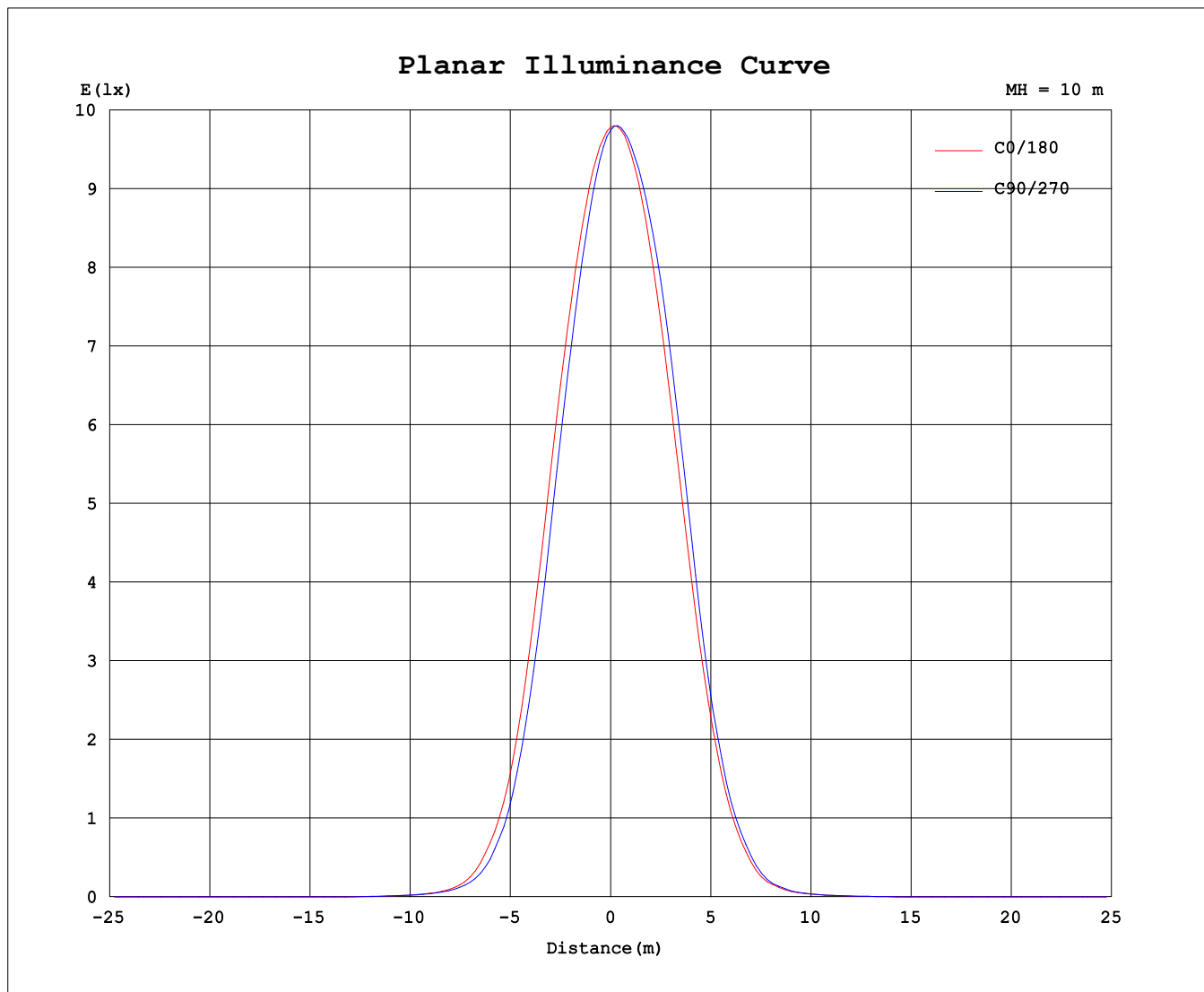
Test:U:18.04V I:0.3500A P:6.314W PF:1.0000 Freq:0Hz Lamp Flux:487.477x1 lm		
NAME: ALDL0911 3000K 38	TYPE:	WEIGHT:
SPEC.:	DIM.:	SERIAL No.:
MFR.: Alpha	SUR.:	Shielding Angle:



C Range: 0 - 360DEG
 C Interval: 22.5DEG
 Test Speed: HIGH
 Temperature:25.2°C
 Operators:Brooke
 Test Date:2022-05-06

γ Range: 0 - 180DEG
 γ Interval: 1.0DEG
 Test System:EVERFINE GO-R5000_V2 SYSTEM V2.00.459
 Humidity:55.0%
 Test Distance:2.900m [K=0.8817]
 Remarks:

Planar Illuminance Curve



C Range: 0 - 360DEG
C Interval: 22.5DEG
Test Speed: HIGH
Temperature: 25.2°C
Operators: Brooke
Test Date: 2022-05-06

γ Range: 0 - 180DEG
γ Interval: 1.0DEG
Test System: EVERFINE GO-R5000_V2 SYSTEM V2.00.459
Humidity: 55.0%
Test Distance: 2.900m [K=0.8817]
Remarks:

LUMINOUS DISTRIBUTION INTENSITY DATA

Test:U:18.04V I:0.3500A P:6.314W PF:1.0000 Freq:0Hz Lamp Flux:487.477x1 lm		
NAME: ALDL0911 3000K 38	TYPE:	WEIGHT:
SPEC.:	DIM.:	SERIAL No.:
MFR.: Alpha	SUR.:	Shielding Angle:

Table--1

UNIT: cd

C (DEG) γ (DEG)	0	22.5	45	67.5	90	112.5	135	157.5	180	202.5	225	247.5	270	292.5	315	337.5				
0	975	975	975	975	975	975	975	975	975	975	975	975	975	975	975	975				
5	931	915	906	902	906	916	932	949	964	973	979	978	976	967	960	947				
10	830	798	780	771	776	795	828	863	897	918	933	935	931	917	897	870				
15	675	634	608	595	601	623	669	719	771	810	834	842	834	815	780	736				
20	475	432	403	389	391	414	465	522	588	635	665	672	662	638	594	544				
25	275	242	221	211	214	233	275	322	381	418	444	445	430	407	371	331				
30	128	110	98.4	92.5	94.3	105	128	159	200	225	242	240	225	209	188	163				
35	46.1	38.5	34.5	33.0	34.2	38.8	47.4	60.1	80.8	94.6	104	103	95.2	85.5	72.7	60.5				
40	16.5	14.8	13.8	13.5	14.1	15.6	18.0	21.1	27.5	30.8	33.1	32.9	30.3	27.4	23.8	19.9				
45	7.16	6.56	6.31	6.27	6.52	7.11	7.96	8.91	10.4	11.4	11.9	11.5	10.8	9.92	8.96	8.16				
50	2.93	2.53	2.34	2.33	2.47	2.85	3.32	3.88	4.75	5.22	5.41	5.25	4.95	4.55	3.97	3.51				
55	0.85	0.78	0.67	0.63	0.67	0.79	0.93	1.12	1.44	1.62	1.71	1.70	1.56	1.39	1.16	1.02				
60	0.29	0.28	0.27	0.27	0.28	0.29	0.31	0.31	0.35	0.41	0.41	0.37	0.35	0.33	0.34	0.29				
65	0.14	0.14	0.14	0.14	0.14	0.15	0.15	0.15	0.15	0.15	0.14	0.13	0.12	0.12	0.13	0.13				
70	0.07	0.07	0.07	0.07	0.07	0.08	0.08	0.07	0.07	0.07	0.06	0.06	0.05	0.05	0.06	0.06				
75	0.03	0.04	0.04	0.04	0.04	0.04	0.04	0.03	0.03	0.03	0.03	0.03	0.02	0.03	0.03	0.03				
80	0.01	0.01	0.01	0.02	0.02	0.02	0.02	0.01	0.01	0.01	0.01	0.01	0.01	0.01	0.01	0.01				
85	0.00	0.00	0.00	0.00	0.00	0.00	0.00	0.00	0.00	0.00	0.00	0.00	0.00	0.00	0.00	0.00				
90	0.00	0.00	0.00	0.00	0.00	0.00	0.00	0.00	0.00	0.00	0.00	0.00	0.00	0.00	0.00	0.00				
95	0.00	0.00	0.00	0.00	0.00	0.00	0.00	0.00	0.00	0.00	0.00	0.00	0.00	0.00	0.00	0.00				
100	0.00	0.00	0.00	0.00	0.00	0.00	0.00	0.00	0.00	0.00	0.00	0.00	0.00	0.00	0.00	0.00				
105	0.00	0.00	0.00	0.00	0.00	0.00	0.00	0.00	0.00	0.00	0.00	0.00	0.00	0.00	0.00	0.00				
110	0.00	0.00	0.00	0.00	0.00	0.00	0.00	0.00	0.00	0.00	0.00	0.00	0.00	0.00	0.00	0.00				
115	0.00	0.00	0.00	0.00	0.00	0.00	0.00	0.00	0.00	0.00	0.00	0.00	0.00	0.00	0.00	0.00				
120	0.00	0.00	0.00	0.00	0.00	0.00	0.00	0.00	0.00	0.00	0.00	0.00	0.00	0.00	0.00	0.00				
125	0.01	0.01	0.02	0.02	0.01	0.01	0.01	0.01	0.01	0.01	0.01	0.01	0.01	0.01	0.01	0.01				
130	0.04	0.04	0.04	0.04	0.04	0.04	0.04	0.04	0.05	0.04	0.04	0.04	0.04	0.04	0.04	0.05	0.06			
135	0.08	0.09	0.08	0.08	0.08	0.08	0.08	0.08	0.12	0.11	0.10	0.09	0.09	0.09	0.11	0.13				
140	0.13	0.14	0.13	0.12	0.12	0.13	0.13	0.13	0.22	0.21	0.18	0.16	0.16	0.17	0.21	0.24				
145	0.18	0.19	0.18	0.15	0.16	0.17	0.19	0.19	0.34	0.32	0.30	0.26	0.24	0.26	0.31	0.36				
150	0.22	0.22	0.21	0.18	0.19	0.22	0.23	0.23	0.44	0.43	0.40	0.36	0.33	0.35	0.41	0.46				
155	0.27	0.27	0.25	0.23	0.23	0.27	0.28	0.29	0.54	0.53	0.52	0.48	0.43	0.42	0.50	0.56				
160	0.30	0.30	0.29	0.26	0.27	0.31	0.33	0.33	0.60	0.59	0.59	0.54	0.51	0.51	0.56	0.60				
165	0.31	0.31	0.29	0.28	0.30	0.34	0.35	0.35	0.59	0.59	0.59	0.56	0.54	0.53	0.56	0.60				
170	0.31	0.30	0.29	0.29	0.31	0.34	0.35	0.35	0.56	0.56	0.56	0.55	0.54	0.54	0.56	0.57				
175	0.32	0.33	0.33	0.34	0.36	0.38	0.38	0.37	0.48	0.48	0.50	0.49	0.51	0.51	0.52	0.51				
180	0.41	0.40	0.41	0.42	0.44	0.45	0.45	0.43	0.40	0.40	0.39	0.40	0.42	0.44	0.45	0.44				

C Range: 0 - 360DEG
 C Interval: 22.5DEG
 Test Speed: HIGH
 Temperature:25.2℃
 Operators:Brooke
 Test Date:2022-05-06

γ Range: 0 - 180DEG
 γ Interval: 1.0DEG
 Test System:EVERFINE GO-R5000_V2 SYSTEM V2.00.459
 Humidity:55.0%
 Test Distance:2.900m [K=0.8817]
 Remarks: