

LUMINARIA LED

MARCA DRITE, TIPO SPOT 3 VIAS DE LED, REF: LSL200, 30 W
CCT: 3000K, COLOR NEGRO
100-240 V, 50-60 Hz, 3000 Lm, IRC (Ra) 90%, PF: 0.9
50000Hrs, 1 LED COB, C.F:040522LS



Light Output Ratio:	100.0%	
Luminaire Power:	29.92 W	
SHR Nominal:	0.00	Calculated using the TM5
SHR Maximum:	1.00	fine grid method.

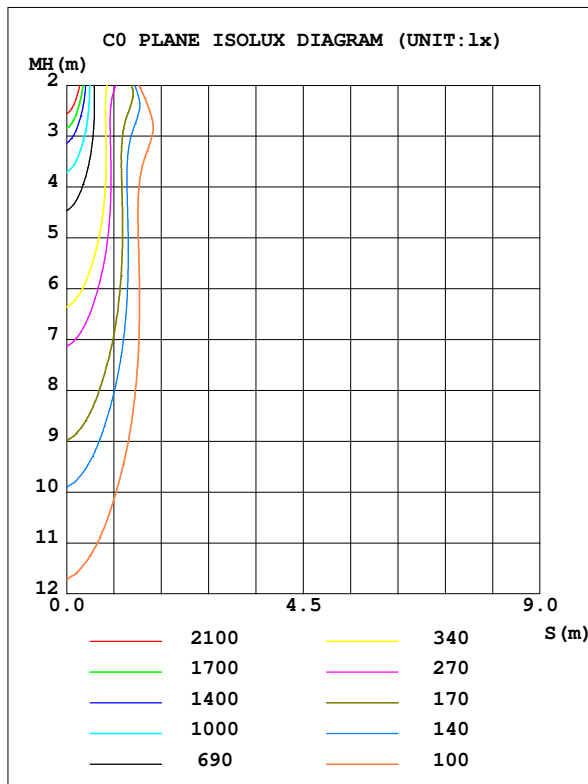
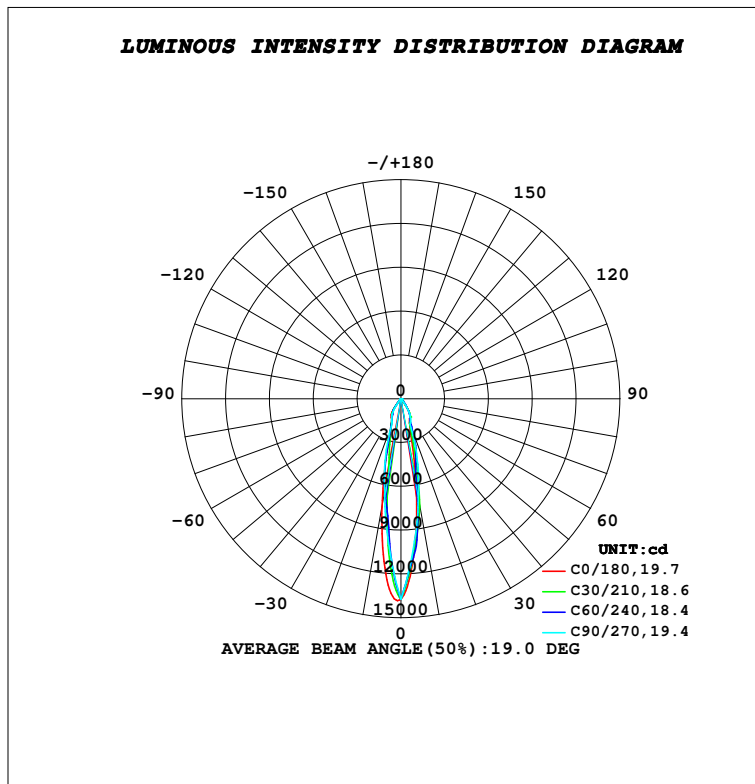
H(β) Range:-90 - 90DEG
H(β) Interval: 1.0DEG
Test Speed: HIGH
Temperature:25.4DEG
Operators:JAV
Test Date:2023-01-10

V(B) Range:-90 - 90DEG
V(B) Interval: 5.0DEG
Test System:EVERFINE GO-2000H_V1 SYSTEM V2.00.417
Humidity:56.4%
Test Distance:13.200m [K=1.0000]
Remarks: LUMINARIA LED TIPO SPOT 30 W
QTEST 26887-08

LUMINAIRE PHOTOMETRIC TEST REPORT

Test:U:220.50V I:0.1414A P:29.917W PF:0.9592 Freq:60.00Hz Lamp Flux:3132.54x1 lm		
NAME: LUMINARIA LED 30 W	TYPE:INTERIOR	WEIGHT:NA
SPEC.:NA	DIM.: NA	SERIAL No.:NA
MFR.: DRITÈ	SUR.:NA	Shielding Angle:NA

DATA OF LAMP		PHOTOMETRIC DATA				Eff: 104.71 lm/W
MODEL	LSL200	I _{max} (cd)	13838	S/MH (C0/180)	0.31	
NOMINAL POWER (W)	30	LOR (%)	100.0	S/MH (C90/270)	0.32	
RATED VOLTAGE (V)	100-240	TOTAL FLUX (lm)	3132.5	η UP, DN (C0-180)	0.0, 50.6	
NOMINAL FLUX (lm)	3132.54	CIE CLASS	DIRECT	η UP, DN (C180-360)	0.0, 49.4	
LAMPS INSIDE	1	η up (%)	0.0	CIBSE SHR NOM	0.00	
TEST VOLTAGE (V)	220	η down (%)	100.0	CIBSE SHR MAX	1.00	



H(β) Range: -90 - 90DEG
 H(β) Interval: 1.0DEG
 Test Speed: HIGH
 Temperature: 25.4DEG
 Operators: JAV
 Test Date: 2023-01-10

V(B) Range: -90 - 90DEG
 V(B) Interval: 5.0DEG
 Test System: EVERFINE GO-2000H_V1 SYSTEM V2.00.417
 Humidity: 56.4%
 Test Distance: 13.200m [K=1.0000]
 Remarks: LUMINARIA LED TIPO SPOT 30 W
 QTEST 26887-08

ZONAL FLUX DIAGRAM

ZONAL FLUX DIAGRAM:

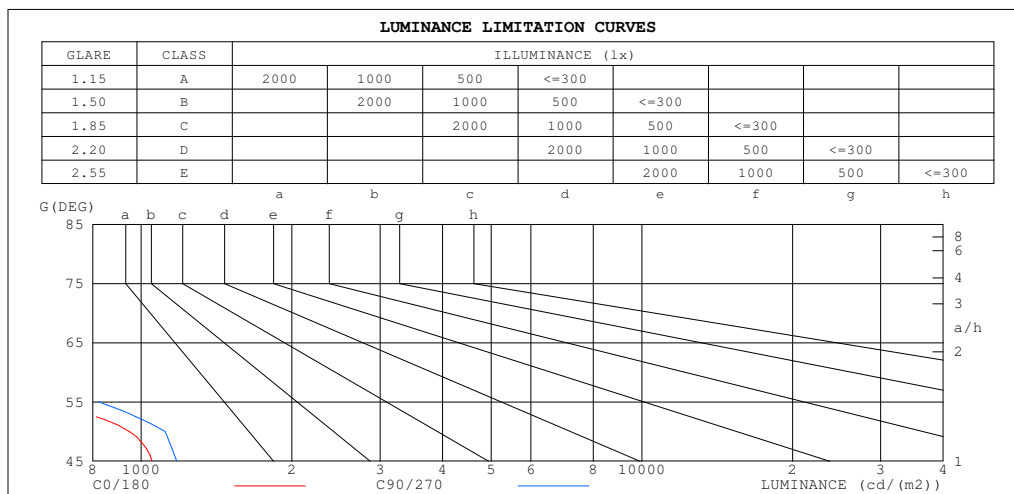
γ	C0	C45	C90	C135	C180	C225	C270	C315	γ	Φ zone	Φ total	Φ lum, lamp
10	605.7	686.6	688.6	591.8	752.3	566.7	642.7	658.2	0- 10	855.4	855.4	27.3, 27.3
20	176.8	226.4	189.5	195.5	200.5	190.4	180.1	212.5	10- 20	1012	1867	59.6, 59.6
30	125.6	120.5	123.4	116.6	133.9	117.1	125.5	116.4	20- 30	698.2	2565	81.9, 81.9
40	10.10	10.68	9.004	20.90	19.48	20.22	10.12	10.24	30- 40	439.6	3005	95.9, 95.9
50	6.087	6.483	7.181	6.865	6.757	6.687	6.742	5.959	40- 50	72.32	3077	98.2, 98.2
60	1.671	1.921	2.220	2.177	2.243	2.230	2.173	1.868	50- 60	38.31	3115	99.5, 99.5
70	0.5679	0.6922	0.7887	0.6476	0.5890	0.5265	0.5768	0.5906	60- 70	11.81	3127	99.8, 99.8
80	0.0749	0.3509	0.3723	0.3078	0.0882	0.1057	0.0821	0.1284	70- 80	3.913	3131	100, 100
90	0	0.1031	0.1398	0.0975	0	0	0	0	80- 90	1.450	3133	100, 100
100									90-100			
110									100-110			
120									110-120			
130									120-130			
140									130-140			
150									140-150			
160									150-160			
170									160-170			
180									170-180			
DEG	LUMINOUS INTENSITY: μ A10cd										UNIT: lm	

H(β) Range:-90 - 90DEG
 H(β) Interval: 1.0DEG
 Test Speed: HIGH
 Temperature: 25.4DEG
 Operators: JAV
 Test Date: 2023-01-10

V(B) Range:-90 - 90DEG
 V(B) Interval: 5.0DEG
 Test System: EVERFINE GO-2000H_V1 SYSTEM V2.00.417
 Humidity: 56.4%
 Test Distance: 13.200m [K=1.0000]
 Remarks: LUMINARIA LED TIPO SPOT 30 W
 QTEST 26887-08

LUMINANCE LIMITATION CURVES

Test:U:220.50V I:0.1414A P:29.917W PF:0.9592 Freq:60.00Hz Lamp Flux:3132.54x1 lm		
NAME: LUMINARIA LED 30 W	TYPE: INTERIOR	WEIGHT: NA
SPEC.: NA	DIM.: NA	SERIAL No.: NA
MFR.: DRITÈ	SUR.: NA	Shielding Angle: NA



LUMINANCE cd/(m2)		
G (DEG)	C0/180	C90/270
85	49	294
80	43	214
75	60	224
70	166	231
65	226	354
60	334	444
55	633	822
50	947	1117
45	1051	1177

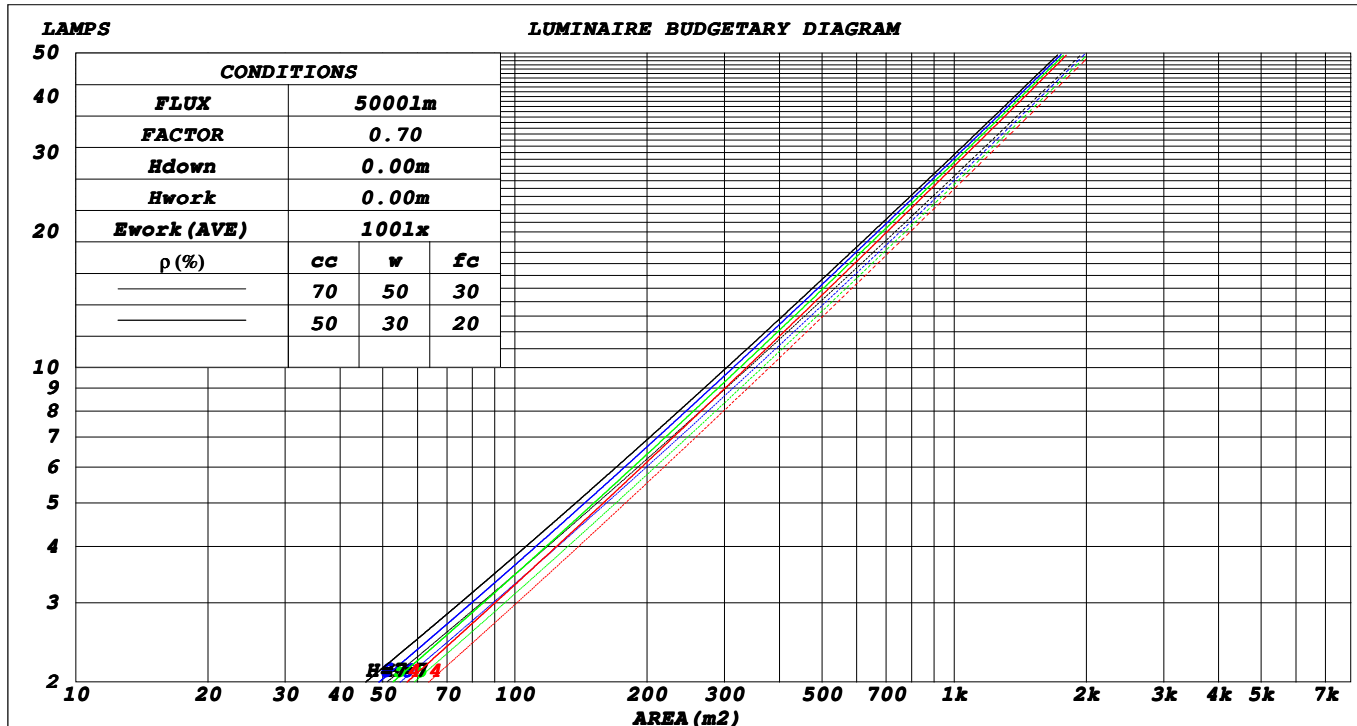
H(β) Range: -90 - 90DEG
 H(β) Interval: 1.0DEG
 Test Speed: HIGH
 Temperature: 25.4DEG
 Operators: JAV
 Test Date: 2023-01-10

V(B) Range: -90 - 90DEG
 V(B) Interval: 5.0DEG
 Test System: EVERFINE GO-2000H_V1 SYSTEM V2.00.417
 Humidity: 56.4%
 Test Distance: 13.200m [K=1.0000]
 Remarks: LUMINARIA LED TIPO SPOT 30 W
 QTEST 26887-08

CU AND LUMINAIRE BUDGETARY ESTIMATE DIAGRAM

Test:U:220.50V I:0.1414A P:29.917W PF:0.9592 Freq:60.00Hz Lamp Flux:3132.54x1 lm		
NAME: LUMINARIA LED 30 W	TYPE:INTERIOR	WEIGHT:NA
SPEC.:NA	DIM.: NA	SERIAL No.:NA
MFR.: DRITÈ	SUR.:NA	Shielding Angle:NA

ρ_{cc}	80%			70%			50%			30%			10%			0
ρ_w	50%	30%	10%	50%	30%	10%	50%	30%	10%	50%	30%	10%	50%	30%	10%	0
ρ_{fc}	20%			20%			20%			20%			20%			0
RCR	RCR:Room Cavity Ratio						Coefficients of Utilization (CU)									
0.0	1.19	1.19	1.19	1.16	1.16	1.16	1.11	1.11	1.11	1.06	1.06	1.06	1.02	1.02	1.02	1.00
1.0	1.12	1.10	1.08	1.10	1.08	1.06	1.06	1.04	1.03	1.02	1.01	.00	.99	.98	.97	.95
2.0	1.05	1.02	.99	1.04	1.01	.98	1.01	.98	.96	.98	.96	.94	.95	.93	.92	.90
3.0	.00	.96	.92	.98	.95	.91	.96	.93	.90	.94	.91	.89	.91	.89	.87	.86
4.0	.95	.90	.86	.94	.89	.86	.92	.88	.85	.90	.87	.84	.88	.85	.83	.82
5.0	.90	.85	.82	.89	.85	.81	.88	.84	.81	.86	.83	.80	.85	.82	.79	.78
6.0	.86	.81	.78	.85	.81	.77	.84	.80	.77	.83	.79	.76	.81	.78	.76	.75
7.0	.82	.77	.74	.82	.77	.74	.81	.76	.73	.79	.76	.73	.78	.75	.73	.71
8.0	.79	.74	.71	.78	.74	.70	.77	.73	.70	.76	.73	.70	.76	.72	.70	.68
9.0	.76	.71	.68	.75	.71	.68	.75	.70	.67	.74	.70	.67	.73	.70	.67	.66
10.0	.73	.68	.65	.73	.68	.65	.72	.68	.65	.71	.67	.65	.71	.67	.64	.63



H(β) Range:-90 - 90DEG
 H(β) Interval: 1.0DEG
 Test Speed: HIGH
 Temperature:25.4DEG
 Operators:JAV
 Test Date:2023-01-10

V(B) Range:-90 - 90DEG
 V(B) Interval: 5.0DEG
 Test System:EVERFINE GO-2000H_V1 SYSTEM V2.00.417
 Humidity:56.4%
 Test Distance:13.200m [K=1.0000]
 Remarks: LUMINARIA LED TIPO SPOT 30 W
 QTEST 26887-08

WEC AND CCEC

Test:U:220.50V I:0.1414A P:29.917W PF:0.9592 Freq:60.00Hz Lamp Flux:3132.54x1 lm		
NAME: LUMINARIA LED 30 W	TYPE:INTERIOR	WEIGHT:NA
SPEC.:NA	DIM.: NA	SERIAL No.:NA
MFR.: DRITÈ	SUR.:NA	Shielding Angle:NA

ρ_{cc}	80%			70%			50%			30%			10%			0
ρ_w	50%	30%	10%	50%	30%	10%	50%	30%	10%	50%	30%	10%	50%	30%	10%	0
ρ_{fc}	20%			20%			20%			20%			20%			0
RCR	RCR:Room Cavity Ratio						Wall Exitance Coefficients(WEC)									
0.0																
1.0	.156	.089	.028	.150	.085	.027	.137	.079	.025	.126	.072	.023	.115	.067	.021	
2.0	.147	.081	.025	.142	.078	.024	.131	.073	.023	.122	.068	.021	.113	.064	.020	
3.0	.139	.074	.022	.134	.072	.022	.126	.068	.021	.118	.064	.020	.110	.061	.019	
4.0	.131	.068	.020	.127	.067	.020	.120	.064	.019	.113	.061	.018	.107	.058	.018	
5.0	.125	.063	.018	.121	.062	.018	.115	.060	.018	.109	.057	.017	.103	.055	.017	
6.0	.118	.059	.017	.115	.058	.017	.110	.056	.016	.105	.054	.016	.100	.052	.016	
7.0	.113	.056	.016	.110	.055	.016	.105	.053	.015	.101	.052	.015	.096	.050	.015	
8.0	.108	.053	.015	.105	.052	.015	.101	.050	.014	.097	.049	.014	.093	.048	.014	
9.0	.103	.050	.014	.101	.049	.014	.097	.048	.014	.093	.047	.013	.090	.046	.013	
10.0	.099	.047	.013	.097	.047	.013	.093	.046	.013	.090	.045	.013	.087	.044	.013	

ρ_{cc}	80%			70%			50%			30%			10%			0
ρ_w	50%	30%	10%	50%	30%	10%	50%	30%	10%	50%	30%	10%	50%	30%	10%	0
ρ_{fc}	20%			20%			20%			20%			20%			0
RCR	RCR:Room Cavity Ratio						Ceiling Cavity Exitance Coefficients(CCEC)									
0.0																
1.0	.190	.190	.190	.163	.163	.163	.111	.111	.111	.064	.064	.064	.020	.020	.020	
2.0	.170	.157	.147	.145	.135	.126	.099	.093	.087	.057	.054	.051	.018	.017	.016	
3.0	.153	.133	.115	.131	.114	.100	.090	.079	.070	.052	.046	.041	.017	.015	.013	
4.0	.139	.113	.093	.119	.098	.080	.082	.068	.056	.047	.040	.033	.015	.013	.011	
5.0	.128	.098	.076	.110	.085	.066	.075	.059	.046	.044	.035	.027	.014	.011	.009	
6.0	.118	.086	.063	.102	.075	.055	.070	.052	.039	.041	.031	.023	.013	.010	.008	
7.0	.110	.077	.053	.095	.066	.046	.065	.047	.033	.038	.027	.019	.012	.009	.006	
8.0	.103	.069	.045	.089	.060	.039	.061	.042	.028	.036	.025	.017	.011	.008	.005	
9.0	.097	.062	.039	.083	.054	.034	.058	.038	.024	.034	.022	.014	.011	.007	.005	
10.0	.091	.057	.034	.079	.049	.029	.055	.035	.021	.032	.020	.012	.010	.007	.004	
10.0	.087	.052	.029	.075	.045	.026	.052	.032	.018	.030	.019	.011	.010	.006	.004	

H(β) Range:-90 - 90DEG
 H(β) Interval: 1.0DEG
 Test Speed: HIGH
 Temperature:25.4DEG
 Operators:JAV
 Test Date:2023-01-10

V(B) Range:-90 - 90DEG
 V(B) Interval: 5.0DEG
 Test System:EVERFINE GO-2000H_V1 SYSTEM V2.00.417
 Humidity:56.4%
 Test Distance:13.200m [K=1.0000]
 Remarks: LUMINARIA LED TIPO SPOT 30 W
 QTEST 26887-08

UGR(Unified Glare Rating) Table

Test:U:220.50V I:0.1414A P:29.917W PF:0.9592 Freq:60.00Hz Lamp Flux:3132.54x1 lm										
NAME: LUMINARIA LED 30 W					TYPE:INTERIOR			WEIGHT:NA		
SPEC.:NA					DIM.: NA			SERIAL No.:NA		
MFR.: DRITÈ					SUR.:NA			Shielding Angle:NA		
ceiling/cavity	0.7	0.7	0.5	0.5	0.3	0.7	0.7	0.5	0.5	0.3
walls	0.5	0.3	0.5	0.3	0.3	0.5	0.3	0.5	0.3	0.3
working plane	0.2	0.2	0.2	0.2	0.2	0.2	0.2	0.2	0.2	0.2
Room dimensions	Viewed crosswise					Viewed endwise				
x = 2H y = 2H	5.7	6.5	5.9	6.6	6.8	5.4	6.2	5.6	6.4	6.5
3H	5.6	6.3	5.8	6.5	6.7	5.3	6.1	5.6	6.3	6.4
4H	5.5	6.2	5.8	6.4	6.6	5.3	6.0	5.5	6.2	6.4
6H	5.4	6.1	5.7	6.3	6.5	5.2	5.9	5.5	6.1	6.3
8H	5.4	6.0	5.7	6.2	6.5	5.2	5.8	5.5	6.1	6.3
12H	5.3	5.9	5.6	6.2	6.5	5.2	5.8	5.5	6.0	6.3
4H 2H	5.5	6.2	5.8	6.4	6.6	5.2	5.9	5.5	6.1	6.4
3H	5.4	6.0	5.7	6.2	6.5	5.1	5.7	5.5	6.0	6.3
4H	5.3	5.8	5.6	6.1	6.4	5.1	5.6	5.4	5.9	6.2
6H	5.2	5.7	5.6	6.0	6.3	5.0	5.5	5.4	5.9	6.2
8H	5.1	5.6	5.5	5.9	6.3	5.0	5.5	5.4	5.8	6.2
12H	5.1	5.5	5.5	5.9	6.3	5.0	5.4	5.4	5.8	6.2
8H 4H	5.1	5.6	5.5	5.9	6.3	5.0	5.4	5.3	5.8	6.1
6H	5.1	5.4	5.5	5.8	6.2	4.9	5.3	5.3	5.7	6.1
8H	5.0	5.3	5.4	5.7	6.2	4.9	5.2	5.3	5.6	6.1
12H	5.0	5.2	5.4	5.7	6.2	4.9	5.2	5.4	5.6	6.1
12H 4H	5.1	5.5	5.5	5.9	6.3	4.9	5.3	5.3	5.7	6.1
6H	5.0	5.3	5.4	5.7	6.2	4.9	5.2	5.3	5.6	6.0
8H	5.0	5.2	5.4	5.7	6.2	4.8	5.1	5.3	5.6	6.0
Variations with the observer position at spacings:										
S = 1.0H	+ 2.8 / - 6.6					+ 2.6 / - 5.5				
1.5H	+ 4.8 / - 3.9					+ 4.8 / - 4.1				
2.0H	+ 2.3 / - 4.2					+ 2.1 / - 3.8				

CIE Pub.117, 3133 lm Total Lamp Luminous Flux Correct (8log(F/F0) = 4.0)
 Area: 0.1 m2

H(β) Range:-90 - 90DEG
 H(β) Interval: 1.0DEG
 Test Speed: HIGH
 Temperature:25.4DEG
 Operators:JAV
 Test Date:2023-01-10

V(B) Range:-90 - 90DEG
 V(B) Interval: 5.0DEG
 Test System:EVERFINE GO-2000H_V1 SYSTEM V2.00.417
 Humidity:56.4%
 Test Distance:13.200m [K=1.0000]
 Remarks: LUMINARIA LED TIPO SPOT 30 W
 QTEST 26887-08

UTILIZATION FACTORS TABLE

Test:U:220.50V I:0.1414A P:29.917W PF:0.9592 Freq:60.00Hz Lamp Flux:3132.54x1 lm		
NAME: LUMINARIA LED 30 W	TYPE:INTERIOR	WEIGHT:NA
SPEC.:NA	DIM.: NA	SERIAL No.:NA
MFR.: DRITÈ	SUR.:NA	Shielding Angle:NA

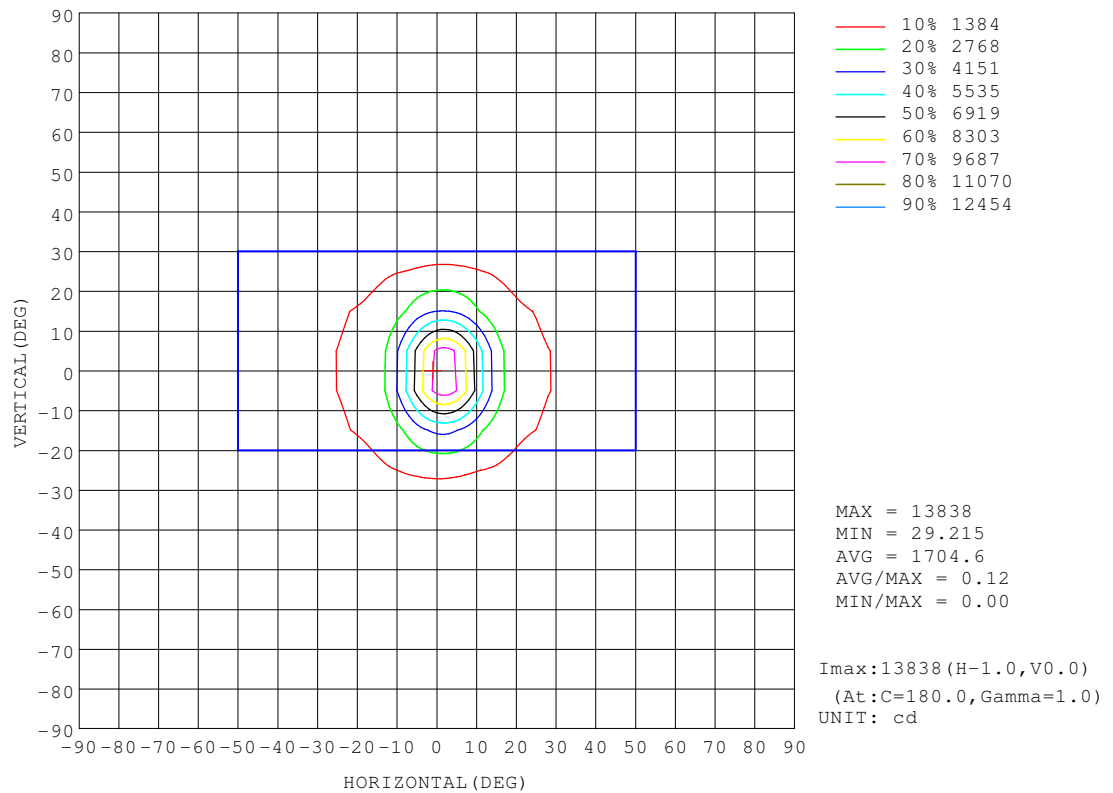
REFLECTANCE										
Ceiling	0.8	0.8	0.8	0.7	0.7	0.7	0.5	0.5	0.5	0
Walls	0.7	0.5	0.3	0.7	0.5	0.3	0.7	0.5	0.3	0
Working plane	0.2	0.2	0.2	0.2	0.2	0.2	0.2	0.2	0.2	0
ROOM INDEX	UTILIZATION FACTORS (PERCENT) $k(RI) \times RCR = 5$									
k = 0.60	89	83	79	88	83	79	88	82	79	76
0.80	96	91	87	96	90	87	94	90	87	83
1.00	100	95	92	100	95	91	98	94	91	87
1.25	104	99	96	103	99	96	101	97	95	91
1.50	107	102	99	105	101	99	103	100	97	93
2.00	109	105	102	108	104	101	105	102	100	95
2.50	111	107	104	109	106	103	106	104	101	96
3.00	112	109	106	110	108	105	107	105	103	97
4.00	114	112	109	112	110	108	109	107	105	98
5.00	115	113	111	113	111	110	109	108	107	99
ROOM INDEX	UF(total)									Direct
According to DIN EN 13032-2 2004			Suspended				SHRNOM = 1.25			

H(β) Range:-90 - 90DEG
 H(β) Interval: 1.0DEG
 Test Speed: HIGH
 Temperature:25.4DEG
 Operators:JAV
 Test Date:2023-01-10

V(B) Range:-90 - 90DEG
 V(B) Interval: 5.0DEG
 Test System:EVERFINE GO-2000H_V1 SYSTEM V2.00.417
 Humidity:56.4%
 Test Distance:13.200m [K=1.0000]
 Remarks: LUMINARIA LED TIPO SPOT 30 W
 QTEST 26887-08

ISOCANDELA DIAGRAM

Test:U:220.50V I:0.1414A P:29.917W PF:0.9592 Freq:60.00Hz Lamp Flux:3132.54x1 lm		
NAME: LUMINARIA LED 30 W	TYPE: INTERIOR	WEIGHT: NA
SPEC.: NA	DIM.: NA	SERIAL No.: NA
MFR.: DRITÈ	SUR.: NA	Shielding Angle: NA

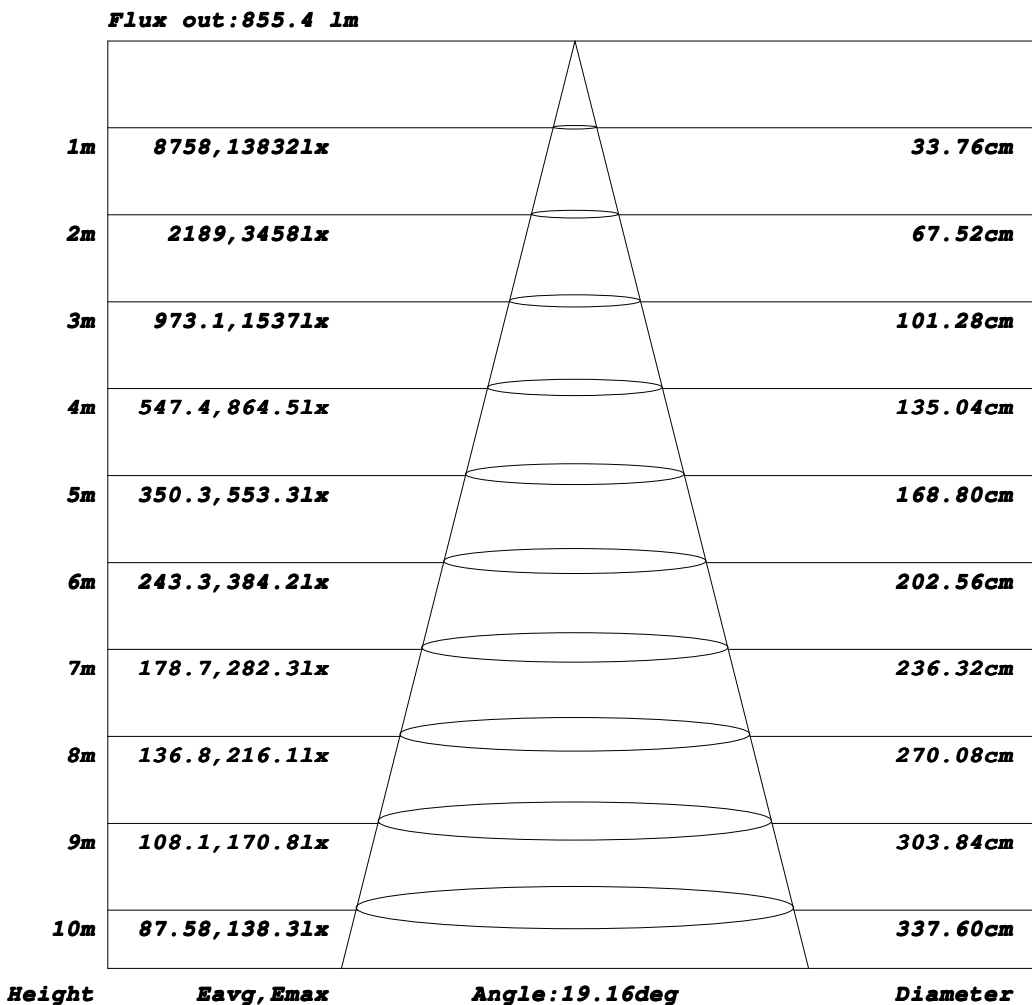


H(β) Range: -90 - 90DEG
H(β) Interval: 1.0DEG
Test Speed: HIGH
Temperature: 25.4DEG
Operators: JAV
Test Date: 2023-01-10

V(B) Range: -90 - 90DEG
V(B) Interval: 5.0DEG
Test System: EVERFINE GO-2000H_V1 SYSTEM V2.00.417
Humidity: 56.4%
Test Distance: 13.200m [K=1.0000]
Remarks: LUMINARIA LED TIPO SPOT 30 W
QTEST 26887-08

AAI Figure

Test:U:220.50V I:0.1414A P:29.917W PF:0.9592 Freq:60.00Hz Lamp Flux:3132.54x1 lm		
NAME: LUMINARIA LED 30 W	TYPE:INTERIOR	WEIGHT:NA
SPEC.:NA	DIM.: NA	SERIAL No.:NA
MFR.: DRITÈ	SUR.:NA	Shielding Angle:NA



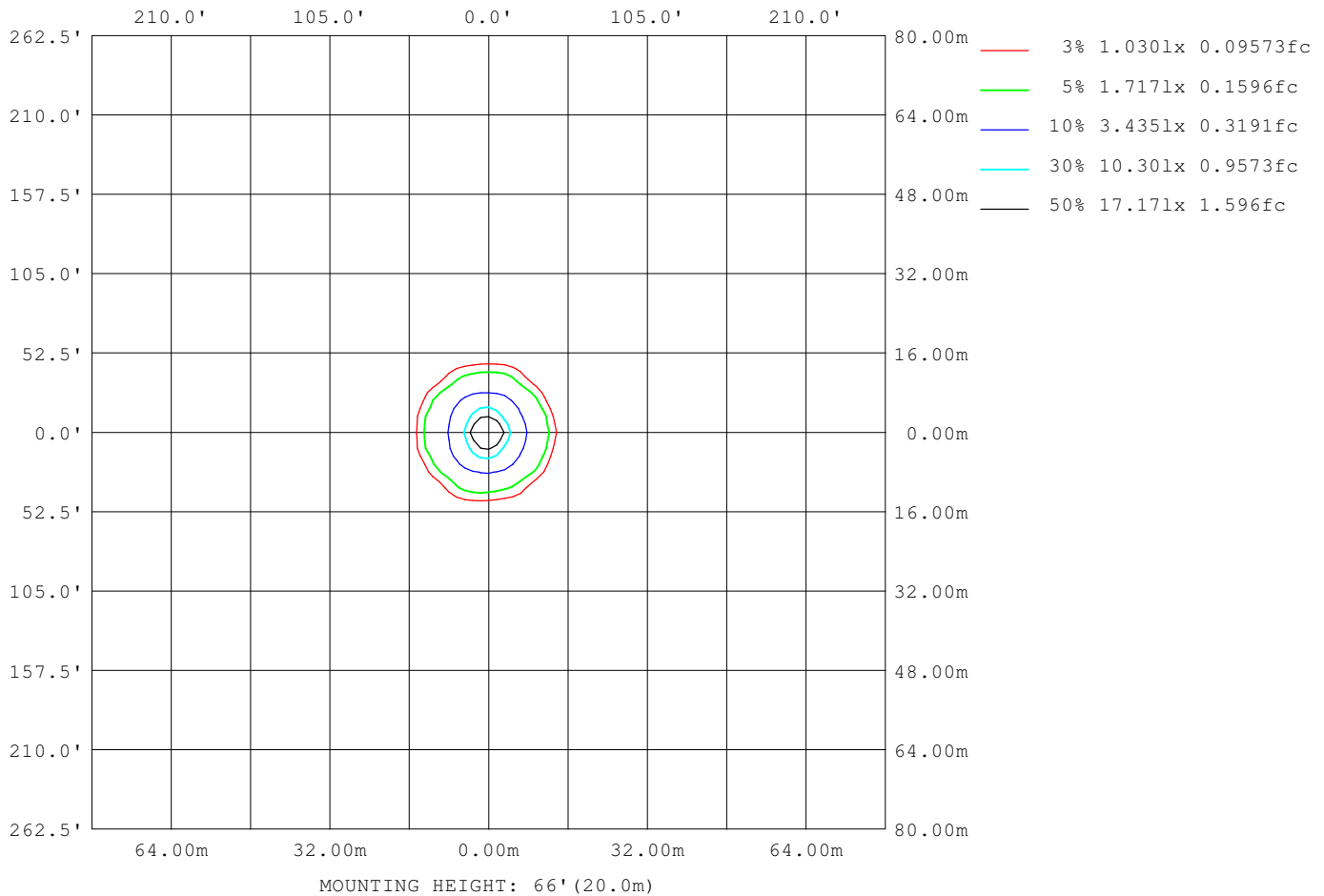
Note:The Curves indicate the illuminated area and the average illumination when the luminaire is at different distance.

H(β) Range:-90 - 90DEG
 H(β) Interval: 1.0DEG
 Test Speed: HIGH
 Temperature:25.4DEG
 Operators:JAV
 Test Date:2023-01-10

V(B) Range:-90 - 90DEG
 V(B) Interval: 5.0DEG
 Test System:EVERFINE GO-2000H_V1 SYSTEM V2.00.417
 Humidity:56.4%
 Test Distance:13.200m [K=1.0000]
 Remarks: LUMINARIA LED TIPO SPOT 30 W
 QTEST 26887-08

ISOLUX DIAGRAM

Test:U:220.50V I:0.1414A P:29.917W PF:0.9592 Freq:60.00Hz Lamp Flux:3132.54x1 lm		
NAME: LUMINARIA LED 30 W	TYPE: INTERIOR	WEIGHT: NA
SPEC.: NA	DIM.: NA	SERIAL No.: NA
MFR.: DRITÈ	SUR.: NA	Shielding Angle: NA



H(β) Range: -90 - 90DEG
H(β) Interval: 1.0DEG
Test Speed: HIGH
Temperature: 25.4DEG
Operators: JAV
Test Date: 2023-01-10

V(B) Range: -90 - 90DEG
V(B) Interval: 5.0DEG
Test System: EVERFINE GO-2000H_V1 SYSTEM V2.00.417
Humidity: 56.4%
Test Distance: 13.200m [K=1.0000]
Remarks: LUMINARIA LED TIPO SPOT 30 W
QTEST 26887-08

LED Avg.L Report

Test:U:220.50V I:0.1414A P:29.917W PF:0.9592 Freq:60.00Hz Lamp Flux:3132.54x1 lm		
NAME: LUMINARIA LED 30 W	TYPE:INTERIOR	WEIGHT:NA
SPEC.:NA	DIM.: NA	SERIAL No.:NA
MFR.: DRITÈ	SUR.:NA	Shielding Angle:NA

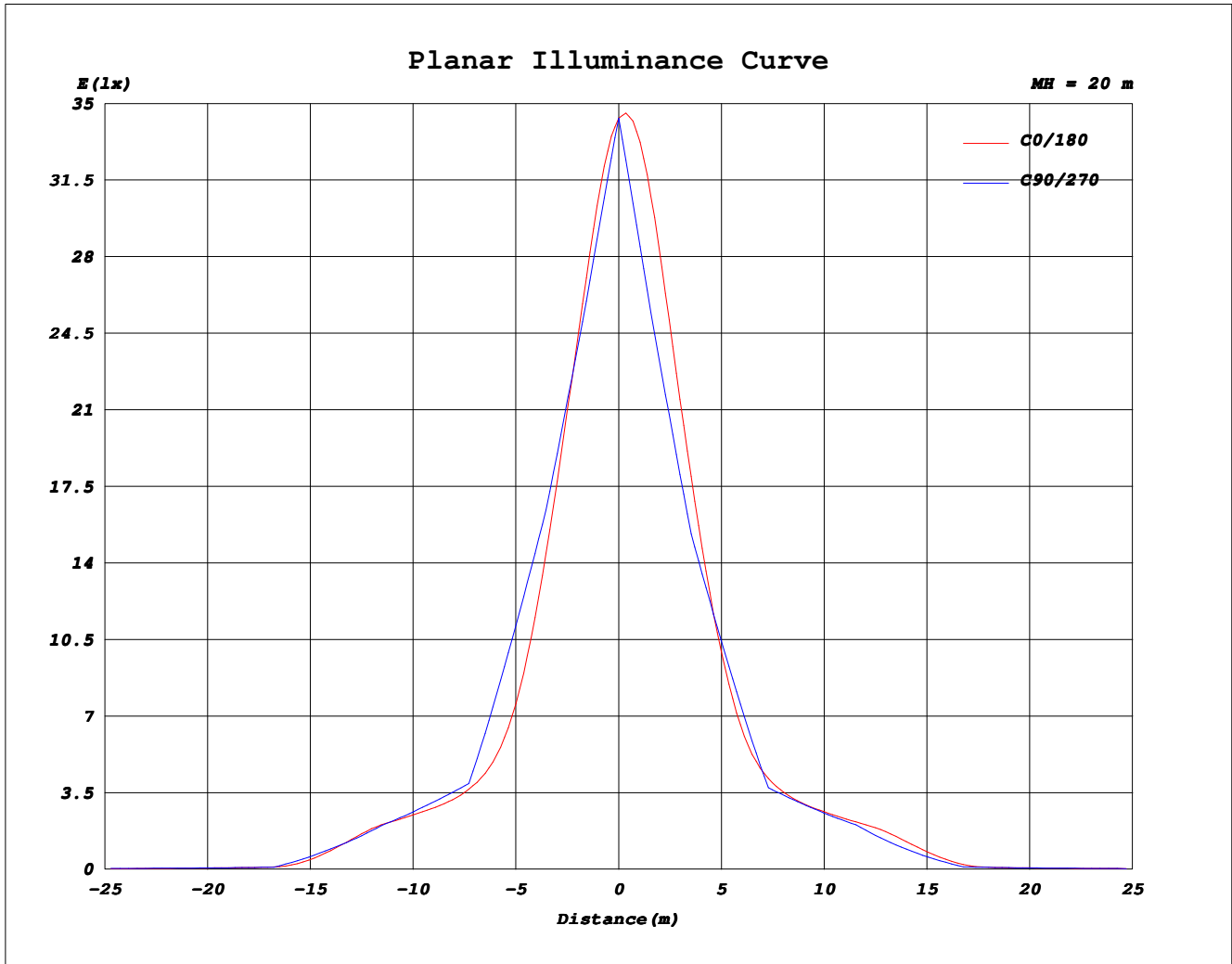
AvgL	cd/m2
L_0~180 (65) av	233
L_0~180 (75) av	87
L_0~180 (85) av	59
L_90~270 (65) av	340
L_90~270 (75) av	175
L_90~270 (85) av	170
L_45 (65) av	266
L_45 (75) av	123
L_45 (85) av	171

Standard: GB/T 29293-2012

H(β) Range:-90 - 90DEG
H(β) Interval: 1.0DEG
Test Speed: HIGH
Temperature:25.4DEG
Operators:JAV
Test Date:2023-01-10

V(B) Range:-90 - 90DEG
V(B) Interval: 5.0DEG
Test System:EVERFINE GO-2000H_V1 SYSTEM V2.00.417
Humidity:56.4%
Test Distance:13.200m [K=1.0000]
Remarks: LUMINARIA LED TIPO SPOT 30 W
QTEST 26887-08

Planar Illuminance Curve



H(β) Range:-90 - 90DEG
H(β) Interval: 1.0DEG
Test Speed: HIGH
Temperature:25.4DEG
Operators:JAV
Test Date:2023-01-10

V(B) Range:-90 - 90DEG
V(B) Interval: 5.0DEG
Test System:EVERFINE GO-2000H_V1 SYSTEM V2.00.417
Humidity:56.4%
Test Distance:13.200m [K=1.0000]
Remarks: LUMINARIA LED TIPO SPOT 30 W
QTEST 26887-08

MARCA DRITE, TIPO SPOT 3 VIAS DE LED, REF: LSL200, 30 W
CCT: 3000K, COLOR NEGRO
100-240 V, 50-60 Hz, 3000 Lm, IRC(Ra) 90%, PF: 0.9
50000Hrs, 1 LED COB, C.F:040522LS

Test Distance: 13.200 metres
Test Temperature: 25.4 degrees Celsius

Significance: PHOTOMETRIC TEST
D-LUX
Carrera 46 # 14-213, Medellín - Antioquia
SAMPLES RECEIVED IN 2022-12-21

Special Notes: TEST EQUIPMENT

GONIOPHOTOMETER SYSTEM: 109A
POWER SUPPLY: 107A
POWER ANALIZER: 110A
THERMOHYGROMETER 354M

Environmental Conditions: 25 ± 1 °C temperature and 50 ± 15% RH
The results reported here relate only to the elements tested.
This test report should not be partially reproduced,
Without the approval of the QTEST Laboratory.

Approved: CLAUDIA BETANCUR

Testing Procedure: IESNA LM 79 de 2019

H(β) Range:-90 - 90DEG
H(β) Interval: 1.0DEG
Test Speed: HIGH
Temperature:25.4DEG
Operators:JAV
Test Date:2023-01-10

V(B) Range:-90 - 90DEG
V(B) Interval: 5.0DEG
Test System:EVERFINE GO-2000H_V1 SYSTEM V2.00.417
Humidity:56.4%
Test Distance:13.200m [K=1.0000]
Remarks: LUMINARIA LED TIPO SPOT 30 W
QTEST 26887-08

LUMINOUS DISTRIBUTION INTENSITY DATA

Test:U:220.50V I:0.1414A P:29.917W PF:0.9592 Freq:60.00Hz Lamp Flux:3132.54x1 lm		
NAME: LUMINARIA LED 30 W	TYPE:INTERIOR	WEIGHT:NA
SPEC.:NA	DIM.: NA	SERIAL No.:NA
MFR.: DRITÈ	SUR.:NA	Shielding Angle:NA

Table--1

UNIT: µÁ10cd

C (DEG) \ γ (DEG)	0	5	10	15	20	25	30	35	40	45	50	55	60	65	70	75	80	85	90
0	1374	1374	1374	1374	1374	1374	1374	1374	1374	1374	1374	1374	1374	1374	1374	1374	1374	1374	1374
5	1046	1041	1039	1039	1041	1045	1050	1056	1061	1064	1067	1068	1065	1062	1055	1046	1037	1024	1013
10	606	619	637	661	688	719	749	724	703	687	672	662	656	652	653	658	666	677	689
15	287	309	337	371	398	375	350	324	295	310	340	370	398	421	438	447	449	447	440
20	177	187	200	211	201	188	177	189	205	226	241	243	240	233	221	209	198	191	190
25	145	150	155	152	146	146	151	159	158	155	149	146	147	149	152	155	157	158	158
30	126	131	132	124	125	130	129	126	124	120	120	120	117	117	116	116	117	120	123
35	63.0	86.1	79.1	56.1	80.1	80.4	63.9	72.6	80.5	71.0	61.9	61.6	72.2	75.0	72.6	69.5	68.0	67.4	68.3
40	10.1	23.7	17.2	14.8	26.0	13.3	20.9	34.5	23.6	10.7	22.6	36.5	38.6	32.6	25.1	18.3	13.2	9.90	9.00
45	7.43	8.36	7.48	8.18	7.74	7.95	8.73	7.91	7.89	8.57	11.2	10.0	7.42	7.54	7.65	7.79	7.91	8.07	8.32
50	6.09	6.72	6.29	6.50	6.45	6.53	6.33	6.70	6.49	6.48	6.46	6.45	6.44	6.52	6.68	6.85	6.99	7.11	7.18
55	3.63	4.29	4.57	3.66	4.56	3.84	4.65	3.91	4.41	4.67	4.28	4.23	4.59	4.80	4.85	4.82	4.78	4.74	4.71
60	1.67	1.83	2.19	2.29	1.66	2.29	1.76	2.48	2.18	1.92	2.41	2.77	2.74	2.56	2.40	2.28	2.21	2.21	2.22
65	0.96	0.94	0.95	0.98	1.11	0.99	1.12	0.95	1.15	1.27	1.19	1.01	1.10	1.21	1.33	1.42	1.48	1.51	1.50
70	0.57	0.67	0.70	0.68	0.63	0.59	0.66	0.66	0.63	0.69	0.75	0.78	0.80	0.82	0.82	0.81	0.80	0.79	0.79
75	0.16	0.24	0.26	0.31	0.28	0.31	0.36	0.44	0.42	0.40	0.46	0.51	0.54	0.56	0.57	0.58	0.58	0.58	0.58
80	0.07	0.09	0.11	0.15	0.20	0.25	0.28	0.30	0.31	0.35	0.37	0.38	0.38	0.38	0.37	0.37	0.37	0.37	0.37
85	0.04	0.08	0.16	0.22	0.25	0.26	0.27	0.26	0.25	0.25	0.25	0.24	0.24	0.25	0.25	0.25	0.26	0.26	0.26
90	0.00	0.13	0.15	0.13	0.12	0.11	0.11	0.10	0.10	0.10	0.11	0.11	0.11	0.12	0.12	0.13	0.14	0.14	0.14

H(β) Range:-90 - 90DEG
 H(β) Interval: 1.0DEG
 Test Speed: HIGH
 Temperature:25.4DEG
 Operators:JAV
 Test Date:2023-01-10

V(B) Range:-90 - 90DEG
 V(B) Interval: 5.0DEG
 Test System:EVERFINE GO-2000H_V1 SYSTEM V2.00.417
 Humidity:56.4%
 Test Distance:13.200m [K=1.0000]
 Remarks: LUMINARIA LED TIPO SPOT 30 W
 QTEST 26887-08

LUMINOUS DISTRIBUTION INTENSITY DATA

Test:U:220.50V I:0.1414A P:29.917W PF:0.9592 Freq:60.00Hz Lamp Flux:3132.54x1 lm		
NAME: LUMINARIA LED 30 W	TYPE:INTERIOR	WEIGHT:NA
SPEC.:NA	DIM.: NA	SERIAL No.:NA
MFR.: DRITÈ	SUR.:NA	Shielding Angle:NA

Table--3

UNIT: $\mu\text{A}10\text{cd}$

C (DEG) \ γ (DEG)	190	195	200	205	210	215	220	225	230	235	240	245	250	255	260	265	270	275	280
0	1374	1374	1374	1374	1374	1374	1374	1374	1374	1374	1374	1374	1374	1374	1374	1374	1374	1374	1374
5	1127	1092	1061	1033	1009	989	972	958	949	943	941	943	947	955	965	976	990	1000	1013
10	643	597	555	516	485	511	539	567	593	617	637	651	660	662	659	652	643	632	622
15	303	269	244	267	295	328	365	376	378	379	379	381	384	388	395	404	412	418	421
20	175	167	177	190	204	201	198	190	189	196	202	205	204	199	191	184	180	181	187
25	142	146	153	153	149	144	147	150	152	149	147	147	147	147	149	151	153	154	153
30	120	131	129	118	121	130	131	117	110	109	115	119	121	123	124	125	125	125	126
35	66.2	96.8	67.9	67.3	91.5	85.9	66.9	64.2	70.7	81.9	83.3	80.1	75.5	71.2	67.9	66.8	67.2	69.0	71.9
40	18.0	22.3	11.7	23.0	25.3	18.4	18.6	20.2	26.0	27.3	29.6	29.3	24.9	19.1	14.2	11.1	10.1	11.1	14.5
45	7.91	7.32	7.76	7.62	7.43	7.63	7.53	7.45	7.92	8.53	7.58	7.63	7.76	7.89	8.04	8.18	8.36	8.45	8.33
50	6.45	6.31	6.33	6.14	6.45	5.85	6.29	6.69	6.15	5.91	6.01	6.25	6.48	6.65	6.76	6.78	6.74	6.68	6.61
55	3.74	4.95	3.75	4.49	3.72	4.57	4.34	3.92	4.16	4.52	4.66	4.58	4.51	4.45	4.43	4.45	4.47	4.49	4.50
60	1.82	1.75	2.24	1.75	2.27	1.87	2.05	2.23	2.29	2.25	2.34	2.35	2.32	2.27	2.25	2.21	2.17	2.14	2.14
65	1.08	0.97	0.83	0.96	0.89	0.96	0.95	0.99	1.03	0.99	1.05	1.12	1.18	1.24	1.30	1.35	1.38	1.38	1.35
70	0.46	0.46	0.51	0.55	0.50	0.53	0.56	0.53	0.52	0.54	0.57	0.59	0.59	0.59	0.58	0.58	0.58	0.59	0.60
75	0.21	0.20	0.25	0.22	0.28	0.24	0.22	0.23	0.27	0.29	0.30	0.30	0.31	0.31	0.31	0.32	0.33	0.33	0.34
80	0.08	0.08	0.09	0.09	0.10	0.10	0.10	0.11	0.13	0.13	0.13	0.12	0.11	0.10	0.09	0.08	0.08	0.09	0.10
85	0.05	0.06	0.06	0.07	0.07	0.07	0.06	0.06	0.06	0.05	0.05	0.05	0.05	0.04	0.04	0.04	0.04	0.04	0.04
90	0.00	0.00	0.00	0.00	0.00	0.00	0.00	0.00	0.00	0.00	0.00	0.00	0.00	0.00	0.00	0.00	0.00	0.00	0.00

H(β) Range:-90 - 90DEG
 H(β) Interval: 1.0DEG
 Test Speed: HIGH
 Temperature:25.4DEG
 Operators:JAV
 Test Date:2023-01-10

V(B) Range:-90 - 90DEG
 V(B) Interval: 5.0DEG
 Test System:EVERFINE GO-2000H_V1 SYSTEM V2.00.417
 Humidity:56.4%
 Test Distance:13.200m [K=1.0000]
 Remarks: LUMINARIA LED TIPO SPOT 30 W
 QTEST 26887-08

LUMINOUS DISTRIBUTION INTENSITY DATA

Test:U:220.50V I:0.1414A P:29.917W PF:0.9592 Freq:60.00Hz Lamp Flux:3132.54x1 lm		
NAME: LUMINARIA LED 30 W	TYPE:INTERIOR	WEIGHT:NA
SPEC.:NA	DIM.: NA	SERIAL No.:NA
MFR.: DRITÈ	SUR.:NA	Shielding Angle:NA

Table--4

UNIT: µÁ10cd

C (DEG) \ γ (DEG)	285	290	295	300	305	310	315	320	325	330	335	340	345	350	355				
0	1374	1374	1374	1374	1374	1374	1374	1374	1374	1374	1374	1374	1374	1374	1374				
5	1023	1033	1041	1045	1049	1049	1048	1046	1043	1039	1036	1034	1033	1035	1039				
10	615	612	613	619	627	641	658	678	701	728	701	675	651	631	615				
15	418	408	390	367	341	313	286	275	307	336	363	387	363	332	307				
20	197	208	218	225	227	225	212	195	181	172	184	197	208	198	186				
25	152	149	147	144	142	144	150	152	154	148	144	145	151	155	149				
30	125	122	119	116	117	116	116	119	119	124	126	123	124	131	130				
35	75.8	78.0	76.3	69.4	57.7	58.5	67.7	75.3	63.7	54.1	73.7	76.3	55.4	78.9	86.0				
40	20.1	27.0	33.4	37.3	34.3	20.8	10.2	21.7	29.8	16.8	12.3	24.9	14.6	17.2	23.8				
45	8.12	7.85	7.51	7.26	9.57	10.3	8.20	7.56	7.40	8.05	7.53	7.38	7.95	7.34	8.30				
50	6.52	6.41	6.24	6.11	6.12	6.04	5.96	6.02	6.27	6.00	6.21	6.06	6.15	6.14	6.66				
55	4.52	4.53	4.45	4.25	3.97	4.03	4.34	4.07	3.64	4.39	3.72	4.33	3.30	4.39	4.28				
60	2.19	2.28	2.42	2.56	2.60	2.28	1.87	2.09	2.35	1.71	2.23	1.67	2.14	2.07	1.83				
65	1.30	1.23	1.12	1.03	0.95	1.11	1.21	1.11	0.94	1.10	0.98	1.11	0.96	0.90	0.93				
70	0.63	0.65	0.65	0.65	0.64	0.63	0.59	0.56	0.61	0.63	0.57	0.62	0.68	0.69	0.66				
75	0.34	0.35	0.35	0.34	0.31	0.26	0.19	0.25	0.30	0.24	0.23	0.22	0.27	0.24	0.21				
80	0.11	0.12	0.13	0.15	0.15	0.16	0.13	0.10	0.09	0.09	0.09	0.08	0.08	0.08	0.08				
85	0.05	0.05	0.05	0.05	0.06	0.06	0.06	0.06	0.06	0.06	0.06	0.05	0.05	0.05	0.05				
90	0.00	0.00	0.00	0.00	0.00	0.00	0.00	0.00	0.00	0.00	0.00	0.00	0.00	0.00	0.00				

H(β) Range:-90 - 90DEG
 H(β) Interval: 1.0DEG
 Test Speed: HIGH
 Temperature:25.4DEG
 Operators:JAV
 Test Date:2023-01-10

V(B) Range:-90 - 90DEG
 V(B) Interval: 5.0DEG
 Test System:EVERFINE GO-2000H_V1 SYSTEM V2.00.417
 Humidity:56.4%
 Test Distance:13.200m [K=1.0000]
 Remarks: LUMINARIA LED TIPO SPOT 30 W
 QTEST 26887-08