

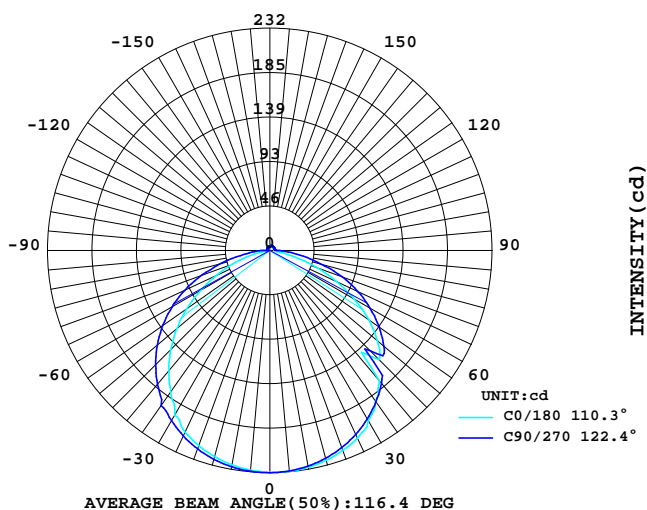
LUMINAIRE PHOTOMETRIC TEST REPORT

Report number:

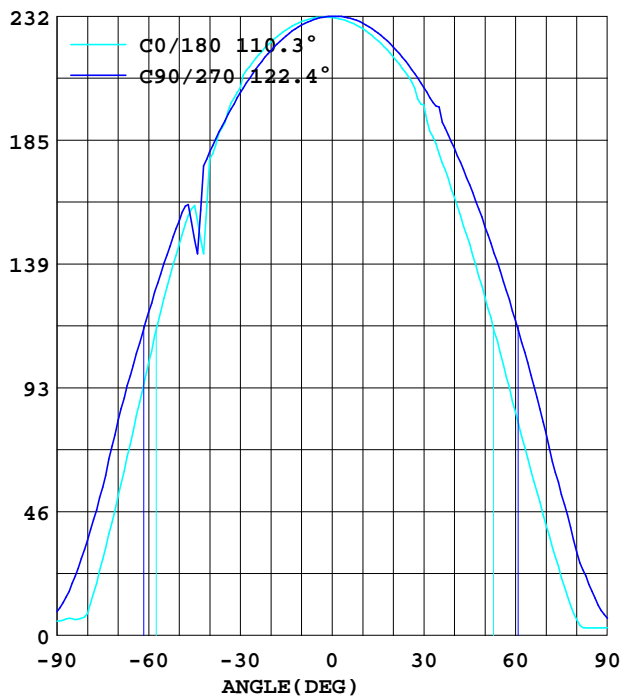
MANUFACTURER:			
Address:			
NAME: RS-HE-2835-64-24-8-4.2-8-4000K-20-5M		TYPE: LED Strip	WEIGHT:
SPECIFICATION: 2835/64D	CCT(K): 4000	DIMENSION: 1M*0.008M	SERIAL No.: 20220104001

DATA OF LAMP		Imax(cd)	232.0	S/MH(C0/180)	1.29
MODEL	2835	EFFICIENCY(%)	100.0	S/MH(C90/270)	1.30
NOMINAL POWER(W)	4	TOTAL FLUX(lm)	732.61	Voltage(V)	23.99
RATED VOLTAGE(V)	24	EFFICIENCY(lm/W)	167.3	Current(A)	0.182
NOMINAL FLUX(lm)	732.6	h up(%)	3.9	Power(W)	4.380
LAMPS QUANTITY	1	h down(%)	96.1	Power Factor(PF)	1.000
TEST VOLTAGE(V)	24.0	Effective Flux(lm)	694.1	EEL	0.077

LUMINOUS INTENSITY DISTRIBUTION



LUMINOUS INTENSITY DISTRIBUTION



Test System:HOPOO HPG1800  
 Temperature:25.3DEG  
 Operators:  
 Test Date:2022年01月04日

Test Set: 8.0deg/s C-Gamma (TYPE C)  
 Humidity:65.0%  
 Test Distance:8.800 m  
 Remarks:

Color Temperature Data List

Report number:

MANUFACTURER:			
Address:			
NAME: RS-HE-2835-64-24-8-4.2-8-4000K-20-5M		TYPE: LED Strip	WEIGHT:
SPECIFICATION: 2835/64D	CCT(K): 4000	DIMENSION: 1M*0.008M	SERIAL No.: 20220104001

---

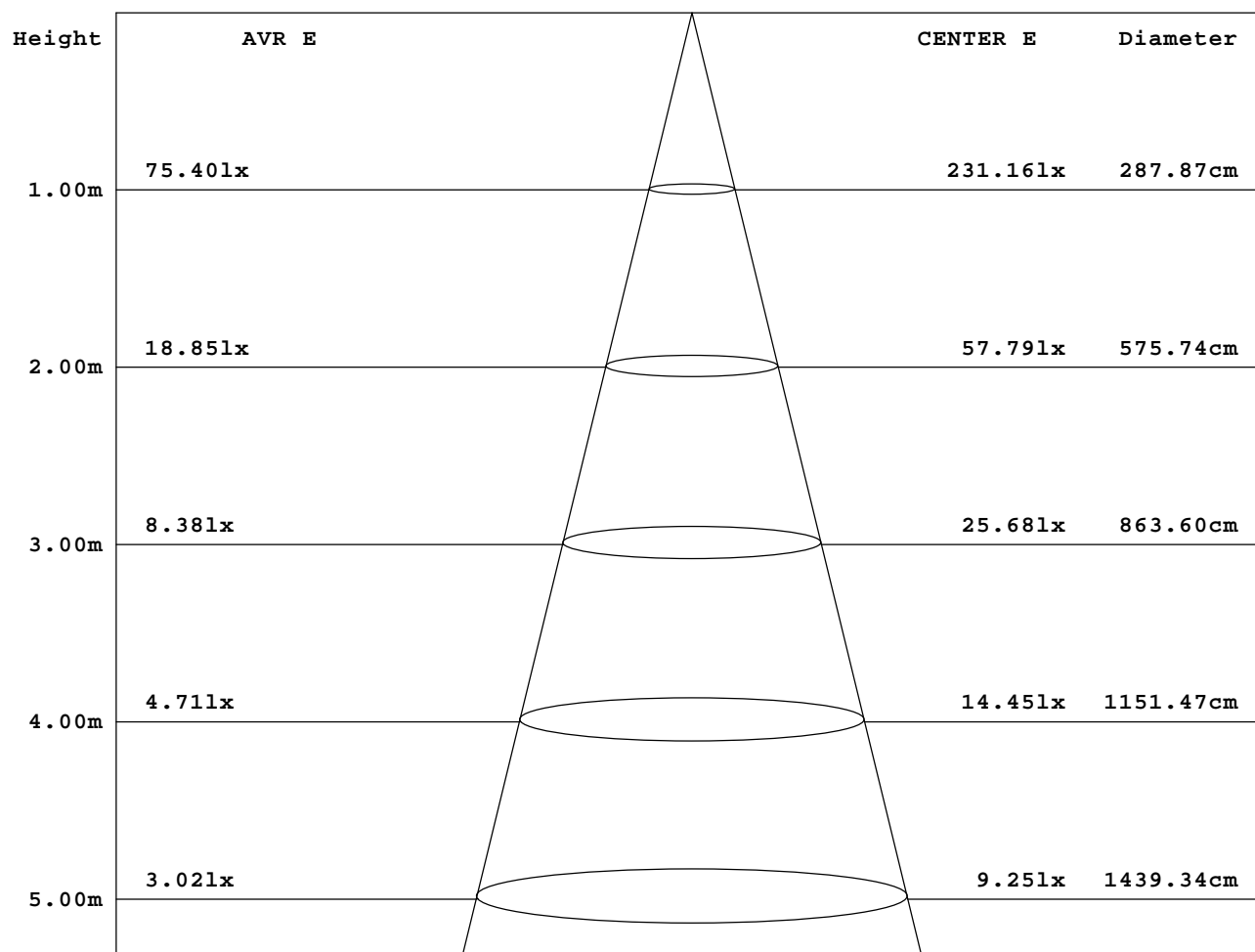
Test System:HOPOO HPG1800  
Temperature:25.3DEG  
Operators:  
Test Date:2022年01月04日

Test Set: 8.0deg/s C-Gamma (TYPE C)  
Humidity:65.0%  
Test Distance:8.800 m  
Remarks:

AVERAGE AND CENTER E Figure

Report number:

MANUFACTURER:			
Address:			
NAME: RS-HE-2835-64-24-8-4.2-8-4000K-20-5M		TYPE: LED Strip	WEIGHT:
SPECIFICATION: 2835/64D	CCT(K): 4000	DIMENSION: 1M*0.008M	SERIAL No.: 20220104001



Angle:110.4deg

Test System:HOPOO HPG1800  
 Temperature:25.3DEG  
 Operators:  
 Test Date:2022年01月04日

Test Set: 8.0deg/s C-Gamma (TYPE C)  
 Humidity:65.0%  
 Test Distance:8.800 m  
 Remarks:

**GONIOPHOTOMETERS SYSTEM TEST REPORT**

**ZONAL FLUX DIAGRAM**

Report number:

<b>MANUFACTURER:</b>			
<b>Address:</b>			
<b>NAME: RS-HE-2835-64-24-8-4.2-8-4000K-20-5M</b>		<b>TYPE: LED Strip</b>	<b>WEIGHT:</b>
<b>SPECIFICATION: 2835/64D</b>	<b>CCT(K): 4000</b>	<b>DIMENSION: 1M*0.008M</b>	<b>SERIAL No.: 20220104001</b>

g	C0	C45	C90	C135	C180	C225	C270	C315	g	Zone	tBtal
5.0	231.1	229.9	230.6	230.1	229.7	231.3	231.0	231.8	0- 5	5.525	5.525
10.0	229.6	227.0	228.2	227.1	226.9	229.7	229.0	230.4	5- 10	16.43	21.95
15.0	226.5	222.6	224.2	222.5	222.4	226.7	225.3	227.6	10- 15	26.89	48.84
20.0	221.8	216.7	218.6	216.5	216.3	222.0	220.0	220.5	15- 20	36.59	85.44
25.0	215.9	209.0	211.7	208.7	209.0	215.8	213.5	208.9	20- 25	45.16	130.6
30.0	204.9	199.9	203.0	199.5	198.4	208.2	204.9	198.7	25- 30	52.36	182.9
35.0	191.8	188.5	192.5	187.9	180.2	198.5	197.7	192.7	30- 35	57.96	240.9
40.0	178.1	175.7	180.9	175.0	163.7	187.2	182.2	182.6	35- 40	61.58	302.5
45.0	160.8	161.3	147.9	160.6	146.2	174.6	168.4	160.1	40- 45	62.12	364.6
50.0	146.3	145.9	155.1	145.2	126.5	160.9	152.9	159.5	45- 50	62.39	427.0
55.0	126.1	128.4	139.1	127.6	105.7	146.7	136.3	146.1	50- 55	61.16	488.2
60.0	101.7	109.3	120.8	108.6	83.32	129.4	117.6	127.5	55- 60	56.50	544.7
65.0	76.27	89.90	100.9	89.13	61.56	109.8	97.41	109.3	60- 65	49.68	594.3
70.0	52.11	68.84	80.46	68.14	41.35	89.44	75.65	90.52	65- 70	41.20	635.6
75.0	28.49	47.47	55.44	47.08	21.60	67.37	52.73	68.84	70- 75	31.13	666.7
80.0	8.208	26.56	35.54	27.25	5.962	42.74	31.13	44.99	75- 80	20.34	687.0
85.0	6.272	12.08	19.43	12.15	2.865	25.71	16.41	27.41	80- 85	11.46	698.5
90.0	5.343	3.872	8.905	4.026	2.942	11.46	6.350	12.77	85- 90	5.815	704.3
95.0	5.111	2.555	5.808	2.710	3.020	6.040	2.942	6.582	90- 95	2.894	707.2
100.0	4.956	2.710	5.343	2.865	3.175	5.730	2.865	5.653	95-100	2.284	709.5
105.0	4.878	2.865	5.188	3.020	3.329	5.575	3.020	5.575	100-105	2.229	711.7
110.0	4.801	3.020	5.033	3.097	3.484	5.420	3.097	5.420	105-110	2.187	713.9
115.0	4.801	3.175	5.033	3.175	3.639	5.343	3.252	5.420	110-115	2.131	716.0
120.0	4.801	3.329	4.956	3.329	3.794	5.188	3.407	5.343	115-120	2.063	718.1
125.0	4.801	3.484	4.956	3.407	3.949	5.188	3.562	5.343	120-125	1.991	720.1
130.0	4.878	3.639	5.033	3.562	4.104	5.188	3.717	5.265	125-130	1.908	722.0
135.0	4.956	3.794	5.033	3.717	4.259	5.188	3.872	5.265	130-135	1.807	723.8
140.0	4.956	3.949	5.111	3.872	4.414	5.265	4.026	5.265	135-140	1.689	725.5
145.0	5.033	4.104	5.111	4.026	4.568	5.265	4.181	5.265	140-145	1.552	727.0
150.0	5.111	4.181	5.188	4.181	4.723	5.343	4.259	5.265	145-150	1.393	728.4
155.0	5.111	4.336	5.188	4.259	4.801	5.343	4.336	5.343	150-155	1.216	729.7
160.0	5.188	4.414	5.265	4.336	4.956	5.343	4.491	5.343	155-160	1.023	730.7
165.0	5.265	4.491	5.265	4.414	5.033	5.343	4.568	5.343	160-165	0.813	731.5
170.0	5.265	4.568	5.265	4.491	5.111	5.343	4.568	5.343	165-170	0.591	732.1
175.0	5.265	4.646	5.265	4.568	5.111	5.343	4.646	5.265	170-175	0.358	732.4
180.0	5.265	4.723	5.188	4.723	5.420	5.188	4.723	5.188	175-180	0.120	732.6
DEG	LUMINOUS INTENSITY:cd									UNIT:lm	

Test System:HOPOO HPG1800  
 Temperature:25.3DEG  
 Operators:  
 Test Date:2022年01月04日

Test Set: 8.0deg/s C-Gamma (TYPE C)  
 Humidity:65.0%  
 Test Distance:8.800 m  
 Remarks:

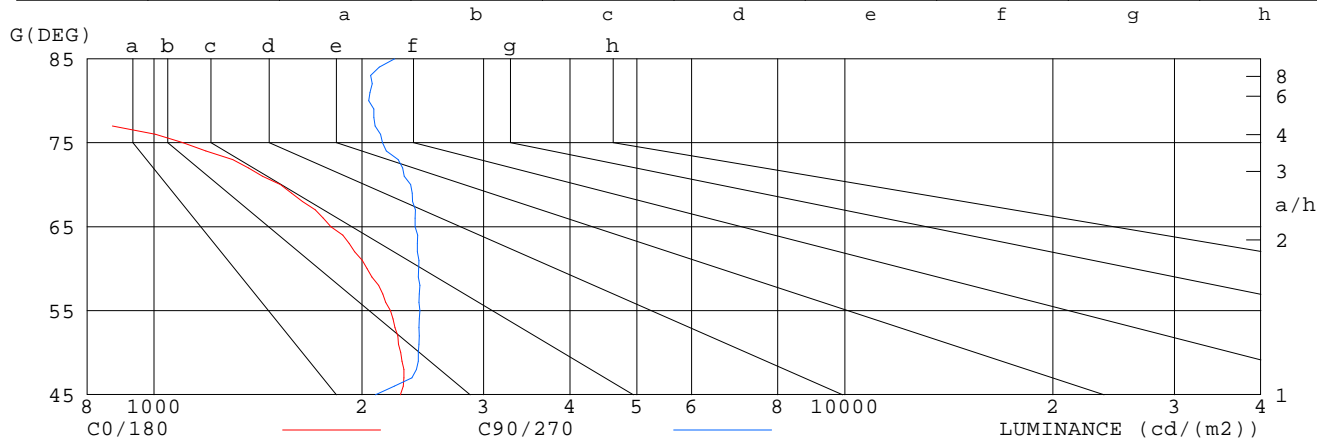
LUMINANCE LIMITATION CURVES

Report number:

MANUFACTURER:			
Address:			
NAME: RS-HE-2835-64-24-8-4.2-8-4000K-20-5M		TYPE: LED Strip	WEIGHT:
SPECIFICATION: 2835/64D	CCT(K): 4000	DIMENSION: 1M*0.008M	SERIAL No.: 20220104001

LUMINANCE LIMITATION CURVES

GLARE	CLASS	ILLUMINANCE (lx)							
1.15	A	2000	1000	500	<=300				
1.50	B		2000	1000	500	<=300			
1.85	C			2000	1000	500	<=300		
2.20	D				2000	1000	500	<=300	
2.55	E					2000	1000	500	<=300



G (DEG)	LUMINANCE cd/m2	
	C0/180	C90/270
85	720	2230
80	473	2047
75	1101	2142
70	1524	2352
65	1805	2389
60	2035	2416
55	2199	2426
50	2277	2413
45	2275	2092

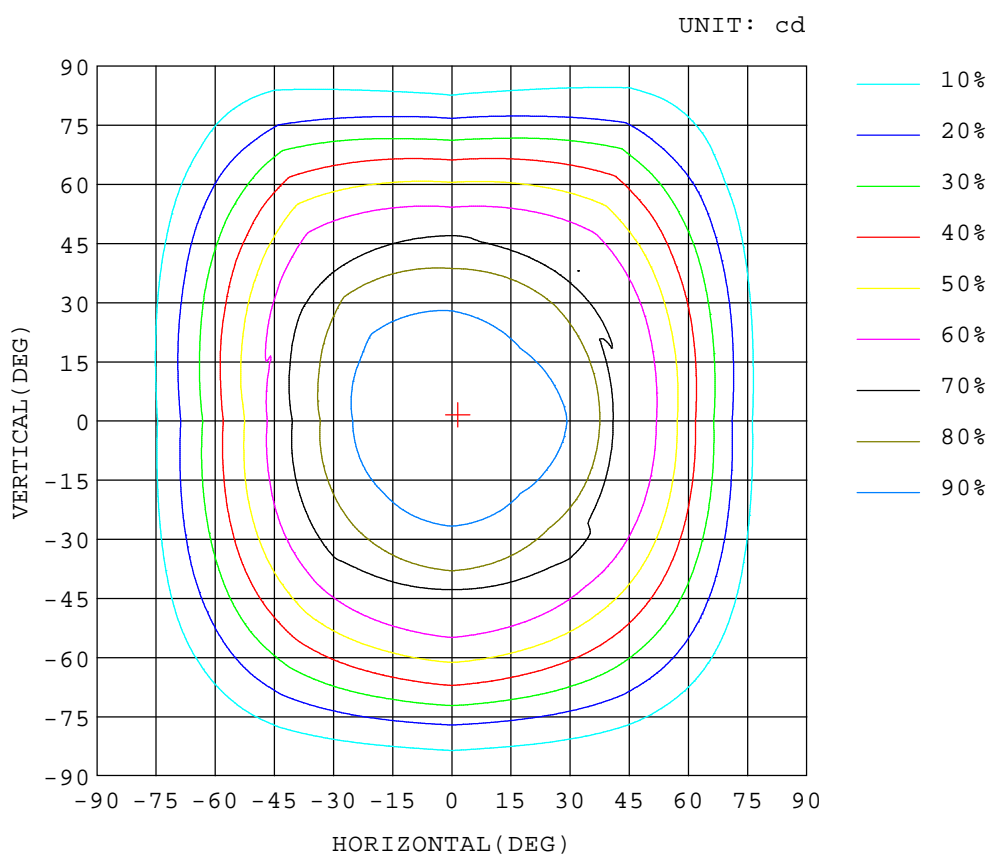
Test System:HOPOO HPG1800  
 Temperature:25.3DEG  
 Operators:  
 Test Date:2022年01月04日

Test Set: 8.0deg/s C-Gamma (TYPE C)  
 Humidity:65.0%  
 Test Distance:8.800 m  
 Remarks:

ISOCANDELA DIAGRAM

Report number:

MANUFACTURER:			
Address:			
NAME: RS-HE-2835-64-24-8-4.2-8-4000K-20-5M		TYPE: LED Strip	WEIGHT:
SPECIFICATION: 2835/64D	CCT(K): 4000	DIMENSION: 1M*0.008M	SERIAL No.: 20220104001



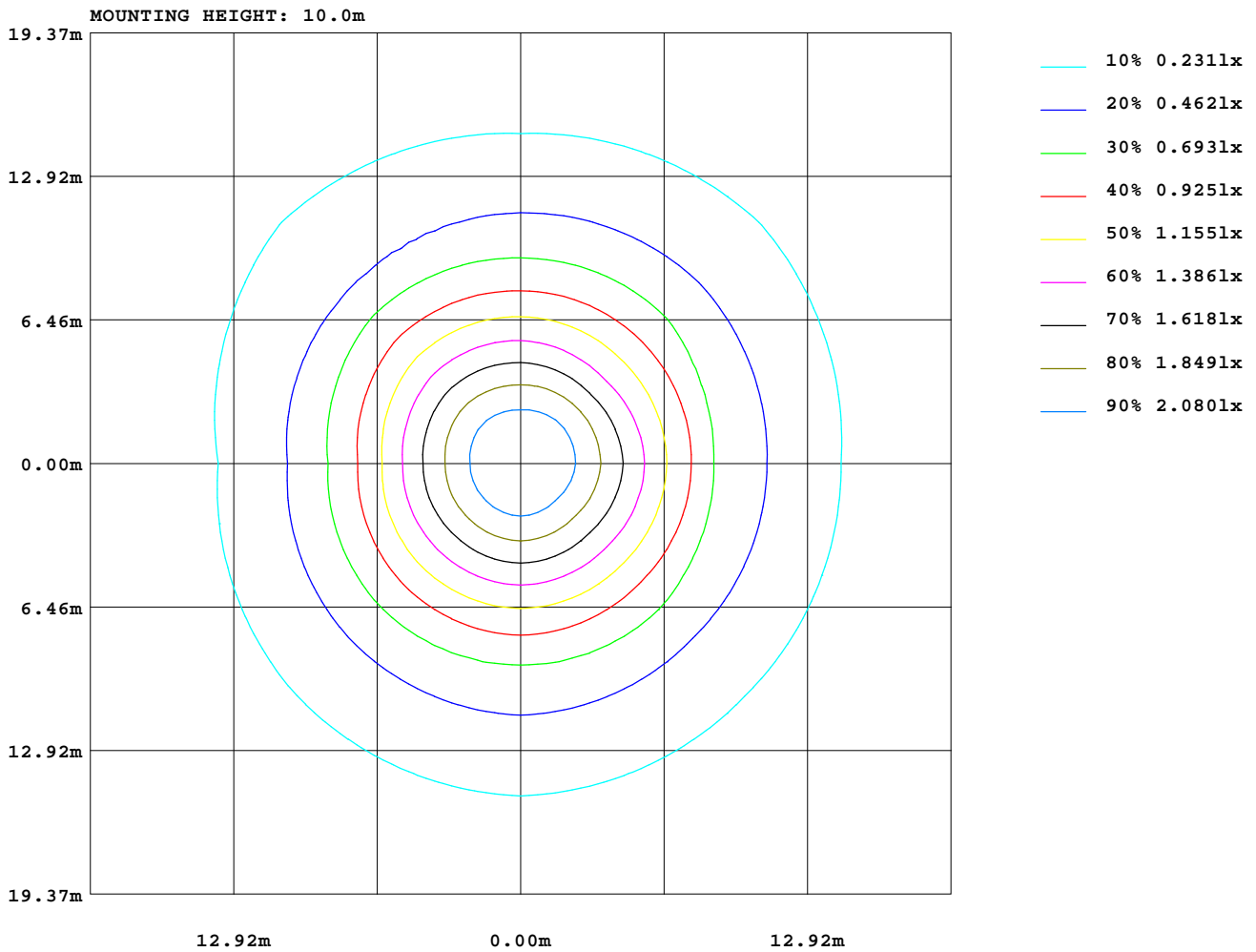
Test System:HOPOO HPG1800  
 Temperature:25.3DEG  
 Operators:  
 Test Date:2022年01月04日

Test Set: 8.0deg/s C-Gamma (TYPE C)  
 Humidity:65.0%  
 Test Distance:8.800 m  
 Remarks:

ISOLUX DIAGRAM

Report number:

MANUFACTURER:			
Address:			
NAME: RS-HE-2835-64-24-8-4.2-8-4000K-20-5M		TYPE: LED Strip	WEIGHT:
SPECIFICATION: 2835/64D	CCT(K): 4000	DIMENSION: 1M*0.008M	SERIAL No.: 20220104001



Test System:HOPOO HPG1800  
 Temperature:25.3DEG  
 Operators:  
 Test Date:2022年01月04日

Test Set: 8.0deg/s C-Gamma (TYPE C)  
 Humidity:65.0%  
 Test Distance:8.800 m  
 Remarks:

**GONIOPHOTOMETERS SYSTEM TEST REPORT**

**AREA LUMINOUS FLUX**

Report number:

<b>MANUFACTURER:</b>			
<b>Address:</b>			
<b>NAME: RS-HE-2835-64-24-8-4.2-8-4000K-20-5M</b>		<b>TYPE: LED Strip</b>	<b>WEIGHT:</b>
<b>SPECIFICATION: 2835/64D</b>	<b>CCT(K): 4000</b>	<b>DIMENSION: 1M*0.008M</b>	<b>SERIAL No.: 20220104001</b>

VERTICAL( DEG )	AREA FLUX DIAGRAM																	UNIT:lm		φ t	φ a	
	0.01	0.05	0.14	0.27	0.44	0.53	0.57	0.57	0.55	0.55	0.59	0.59	0.56	0.47	0.30	0.16	0.07	0.02	6.45	2.90		
90	0.01	0.05	0.14	0.27	0.44	0.53	0.57	0.57	0.55	0.55	0.59	0.59	0.56	0.47	0.30	0.16	0.07	0.02	6.45	2.90		
80	0.01	0.07	0.23	0.53	0.96	1.28	1.49	1.62	1.64	1.64	1.64	1.52	1.31	1.00	0.57	0.26	0.10	0.02	15.9	15.2		
70	0.01	0.09	0.35	0.88	1.60	2.18	2.60	2.87	2.97	2.97	2.87	2.60	2.20	1.64	0.93	0.38	0.12	0.02	27.3	26.9		
60	0.01	0.12	0.51	1.22	2.14	2.99	3.58	3.97	4.14	4.13	3.95	3.55	2.97	2.18	1.29	0.56	0.14	0.02	37.5	37.2		
50	0.01	0.15	0.66	1.50	2.56	3.64	4.30	4.81	5.08	5.06	4.76	4.28	3.62	2.63	1.60	0.73	0.18	0.02	45.6	45.4		
40	0.01	0.18	0.76	1.71	2.88	3.95	4.97	5.59	5.89	5.85	5.50	4.82	3.95	3.01	1.85	0.86	0.21	0.02	52.0	51.9		
30	0.01	0.20	0.83	1.85	3.05	4.33	5.43	6.13	6.45	6.39	5.96	5.30	4.26	3.24	2.05	0.96	0.24	0.02	56.7	56.6		
	0.01	0.21	0.86	1.91	3.17	4.50	5.66	6.45	6.81	6.81	6.39	5.61	4.57	3.34	2.17	1.01	0.26	0.02	59.8	59.6		
	0.01	0.20	0.84	1.89	3.18	4.53	5.75	6.55	6.96	6.99	6.63	5.87	4.77	3.34	2.21	1.02	0.25	0.02	61.0	60.9		
	0.01	0.19	0.83	1.86	3.15	4.49	5.70	6.49	6.92	6.93	6.57	5.87	4.75	3.33	2.18	1.00	0.25	0.02	60.6	60.5		
	0.01	0.19	0.82	1.83	3.09	4.37	5.52	6.30	6.73	6.73	6.32	5.62	4.51	3.29	2.10	0.97	0.24	0.02	58.7	58.6		
-30	0.01	0.18	0.76	1.72	2.91	4.11	5.17	5.94	6.35	6.35	5.95	5.21	4.17	3.12	1.93	0.89	0.22	0.02	55.0	54.9		
-40	0.01	0.15	0.67	1.53	2.61	3.72	4.65	5.37	5.77	5.78	5.38	4.66	3.79	2.77	1.69	0.77	0.18	0.02	49.5	49.4		
-50	0.01	0.11	0.55	1.28	2.22	3.20	4.03	4.55	4.84	4.84	4.56	4.04	3.23	2.32	1.39	0.61	0.14	0.02	42.0	41.8		
-60	0.01	0.08	0.39	0.98	1.74	2.54	3.24	3.79	4.13	4.13	3.80	3.25	2.56	1.79	1.04	0.44	0.10	0.02	34.0	33.7		
-70	0.01	0.06	0.24	0.64	1.19	1.77	2.29	2.72	3.00	3.00	2.73	2.30	1.78	1.21	0.67	0.26	0.08	0.02	24.0	23.4		
-80	0.01	0.04	0.13	0.32	0.62	0.94	1.24	1.50	1.67	1.67	1.50	1.24	0.94	0.62	0.33	0.15	0.06	0.02	13.0	11.8		
-90	0.01	0.03	0.07	0.12	0.21	0.31	0.42	0.51	0.59	0.59	0.51	0.41	0.31	0.21	0.13	0.08	0.04	0.01	4.56	1.20		
	-90	-80	-70	-60	-50	-40	-30	-20	HORIZONTAL( DEG )				20	30	40	50	60	70	80	90		
φ t	0.20	2.31	9.63	22.1	37.8	53.4	66.6	75.8	80.5	80.5	75.6	66.8	54.3	39.5	24.4	11.1	2.86	0.34	733			
φ a	0.00	1.17	8.77	21.4	37.2	52.9	66.1	75.2	79.9	79.8	75.1	66.2	53.7	39.0	23.8	10.2	1.68	0.00		694		

Test System:HOPOO HPG1800  
 Temperature:25.3DEG  
 Operators:  
 Test Date:2022年01月04日

Test Set: 8.0deg/s C-Gamma (TYPE C)  
 Humidity:65.0%  
 Test Distance:8.800 m  
 Remarks:



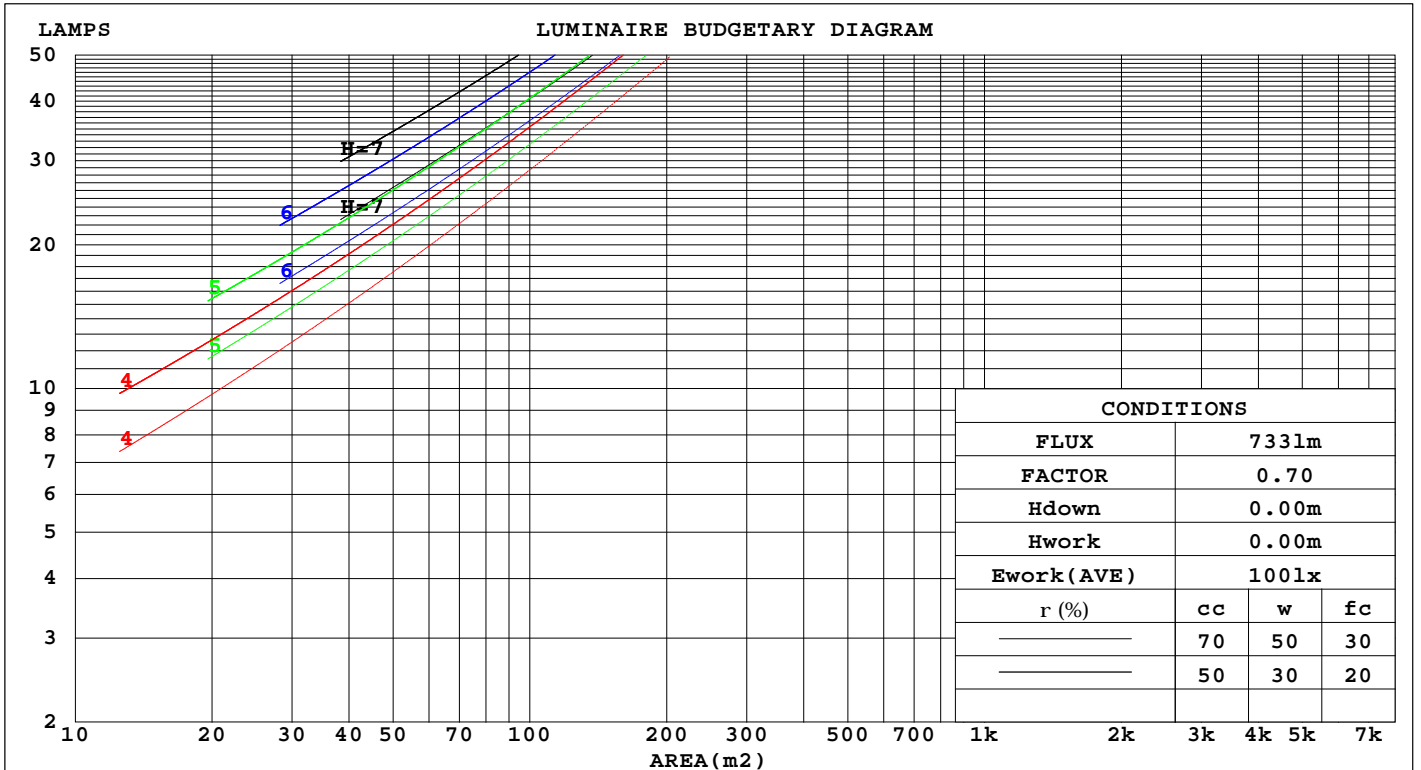
GONIOPHOTOMETERS SYSTEM TEST REPORT

CU AND LUMINAIRE BUDGETARY ESTIMATE DIAGRAM

Report number:

MANUFACTURER:			
Address:			
NAME: RS-HE-2835-64-24-8-4.2-8-4000K-20-5M		TYPE: LED Strip	WEIGHT:
SPECIFICATION: 2835/64D	CCT(K): 4000	DIMENSION: 1M*0.008M	SERIAL No.: 20220104001

rcc	80%			70%			50%			30%			10%			0
rw	50%	30%	10%	50%	30%	10%	50%	30%	10%	50%	30%	10%	50%	30%	10%	0
r <sub>fc</sub>	20%			20%			20%			20%			20%			0
RCR	RCR:Room Cavity Ratio			Coefficients of Utilization(CU)												
0.0	1.18	1.18	1.18	1.15	1.15	1.15	1.09	1.09	1.09	1.04	1.04	1.04	.98	.98	.98	.96
1.0	1.03	.98	.94	.90	.96	.92	.95	.92	.89	.90	.88	.85	.86	.84	.82	.80
2.0	.89	.82	.76	.87	.80	.75	.83	.77	.73	.79	.74	.70	.75	.72	.68	.66
3.0	.78	.70	.63	.76	.68	.62	.72	.66	.61	.69	.64	.59	.66	.61	.58	.55
4.0	.69	.60	.53	.67	.59	.52	.64	.57	.51	.61	.55	.50	.59	.54	.49	.47
5.0	.61	.52	.45	.60	.51	.45	.57	.50	.44	.55	.48	.43	.53	.47	.43	.40
6.0	.55	.46	.40	.54	.45	.39	.52	.44	.39	.50	.43	.38	.48	.42	.37	.35
7.0	.50	.41	.35	.49	.40	.35	.47	.39	.34	.45	.38	.33	.43	.38	.33	.31
8.0	.45	.37	.31	.45	.36	.31	.43	.36	.30	.41	.35	.30	.40	.34	.29	.27
9.0	.42	.33	.28	.41	.33	.28	.39	.32	.27	.38	.32	.27	.37	.31	.27	.25
10.0	.38	.30	.25	.38	.30	.25	.36	.29	.25	.35	.29	.24	.34	.28	.24	.22



Test System:HOPOO HPG1800  
 Temperature:25.3DEG  
 Operators:  
 Test Date:2022年01月04日

Test Set: 8.0deg/s C-Gamma (TYPE C)  
 Humidity:65.0%  
 Test Distance:8.800 m  
 Remarks:

**GONIOPHOTOMETERS SYSTEM TEST REPORT**

**WEC AND CCEC**

Report number:

<b>MANUFACTURER:</b>			
<b>Address:</b>			
<b>NAME: RS-HE-2835-64-24-8-4.2-8-4000K-20-5M</b>		<b>TYPE: LED Strip</b>	<b>WEIGHT:</b>
<b>SPECIFICATION: 2835/64D</b>	<b>CCT(K): 4000</b>	<b>DIMENSION: 1M*0.008M</b>	<b>SERIAL No.: 20220104001</b>

rcc	80%			70%			50%			30%			10%			0
rw	50%	30%	10%	50%	30%	10%	50%	30%	10%	50%	30%	10%	50%	30%	10%	0
r fc	20%			20%			20%			20%			20%			0
<b>RCR</b>	<b>RCR:Room Cavity Ratio</b>						<b>Wall Exitance Coefficients(WEC)</b>									
0.0																
1.0	.317	.181	.057	.309	.176	.056	.294	.168	.054	.279	.161	.052	.266	.154	.050	
2.0	.296	.162	.050	.289	.159	.049	.275	.153	.048	.263	.147	.046	.251	.142	.045	
3.0	.273	.145	.044	.267	.143	.043	.254	.138	.042	.243	.133	.041	.233	.129	.040	
4.0	.252	.131	.038	.246	.129	.038	.235	.124	.037	.225	.121	.036	.215	.117	.036	
5.0	.232	.118	.034	.227	.117	.034	.217	.113	.033	.208	.110	.033	.199	.107	.032	
6.0	.215	.108	.031	.210	.106	.031	.202	.103	.030	.193	.100	.030	.186	.098	.029	
7.0	.200	.099	.028	.196	.097	.028	.188	.095	.027	.180	.092	.027	.173	.090	.026	
8.0	.186	.091	.026	.183	.090	.025	.176	.088	.025	.169	.086	.025	.162	.083	.024	
9.0	.175	.084	.024	.171	.083	.023	.165	.081	.023	.159	.079	.023	.153	.078	.022	
10.0	.164	.079	.022	.161	.078	.022	.155	.076	.021	.149	.074	.021	.144	.073	.021	

rcc	80%			70%			50%			30%			10%			0
rw	50%	30%	10%	50%	30%	10%	50%	30%	10%	50%	30%	10%	50%	30%	10%	0
r fc	20%			20%			20%			20%			20%			0
<b>RCR</b>	<b>RCR:Room Cavity Ratio</b>						<b>Ceiling Cavity Exitance Coefficients(CCEC)</b>									
0.0	.220	.220	.220	.188	.188	.188	.128	.128	.128	.074	.074	.074	.024	.024	.024	
1.0	.210	.186	.163	.180	.159	.141	.123	.110	.097	.071	.063	.057	.023	.020	.018	
2.0	.203	.162	.127	.174	.139	.110	.119	.096	.077	.069	.056	.045	.022	.018	.015	
3.0	.195	.144	.104	.167	.124	.090	.115	.086	.063	.066	.051	.037	.021	.016	.012	
4.0	.188	.131	.088	.161	.113	.077	.111	.079	.054	.064	.046	.032	.021	.015	.010	
5.0	.180	.121	.077	.155	.105	.067	.107	.073	.047	.062	.043	.028	.020	.014	.009	
6.0	.173	.113	.069	.149	.098	.060	.103	.068	.043	.060	.040	.025	.019	.013	.008	
7.0	.166	.106	.063	.143	.092	.055	.099	.064	.039	.057	.038	.023	.019	.012	.008	
8.0	.160	.100	.059	.138	.087	.051	.095	.061	.037	.055	.036	.022	.018	.012	.007	
9.0	.154	.095	.056	.132	.083	.049	.092	.058	.034	.053	.034	.021	.017	.011	.007	
10.0	.148	.091	.053	.128	.079	.046	.088	.056	.033	.052	.033	.020	.017	.011	.006	

Test System:HOPOO HPG1800  
 Temperature:25.3DEG  
 Operators:  
 Test Date:2022年01月04日

Test Set: 8.0deg/s C-Gamma (TYPE C)  
 Humidity:65.0%  
 Test Distance:8.800 m  
 Remarks:

**GONIOPHOTOMETERS SYSTEM TEST REPORT**

**UGR Table**

Report number:

MANUFACTURER:										
Address:										
NAME: RS-HE-2835-64-24-8-4.2-8-4000K-20-5M					TYPE: LED Strip			WEIGHT:		
SPECIFICATION: 2835/64D			CCT(K): 4000		DIMENSION: 1M*0.008M			SERIAL No.: 20220104001		
ceiling/cavity	0.7	0.7	0.5	0.5	0.3	0.7	0.7	0.5	0.5	0.3
walls	0.5	0.3	0.5	0.3	0.3	0.5	0.3	0.5	0.3	0.3
working plane	0.2	0.2	0.2	0.2	0.2	0.2	0.2	0.2	0.2	0.2
Room dimensions	Viewed crosswise					Viewed endwise				
x = 2H y = 2H	15.2	16.7	15.6	17.0	17.3	15.8	17.3	16.1	17.6	17.8
3H	16.4	17.8	16.8	18.1	18.4	17.5	18.9	17.9	19.2	19.5
4H	16.8	18.1	17.1	18.4	18.7	18.2	19.5	18.6	19.8	20.2
6H	16.8	18.0	17.2	18.4	18.7	18.7	19.9	19.1	20.3	20.6
8H	16.8	18.0	17.2	18.3	18.7	18.9	20.1	19.3	20.4	20.8
12H	16.8	17.9	17.2	18.3	18.7	19.1	20.2	19.5	20.6	20.9
4H 2H	15.9	17.2	16.3	17.5	17.9	16.3	17.6	16.7	18.0	18.3
3H	17.3	18.4	17.7	18.8	19.2	18.2	19.4	18.6	19.7	20.1
4H	17.7	18.8	18.2	19.2	19.6	19.0	20.1	19.5	20.5	20.9
6H	17.9	18.8	18.3	19.2	19.7	19.7	20.6	20.1	21.0	21.4
8H	17.9	18.7	18.4	19.2	19.6	19.9	20.8	20.4	21.2	21.7
12H	17.9	18.7	18.4	19.1	19.6	20.1	20.9	20.6	21.4	21.9
8H 4H	18.1	18.9	18.5	19.3	19.8	19.2	20.1	19.7	20.5	21.0
6H	18.3	19.0	18.8	19.5	20.0	20.0	20.7	20.5	21.1	21.7
8H	18.4	19.0	18.9	19.5	20.0	20.3	20.9	20.8	21.4	22.0
12H	18.4	19.0	19.0	19.5	20.1	20.6	21.2	21.2	21.7	22.2
12H 4H	18.1	18.9	18.6	19.3	19.8	19.2	20.0	19.7	20.4	20.9
6H	18.4	19.0	18.9	19.5	20.1	20.0	20.6	20.5	21.1	21.6
8H	18.5	19.0	19.0	19.6	20.1	20.4	20.9	20.9	21.4	22.0
Variations with the observer position at spacings:										
S = 1.0H	+ 0.2 / - 0.2					+ 0.1 / - 0.2				
1.5H	+ 0.2 / - 0.4					+ 0.2 / - 0.3				
2.0H	+ 0.2 / - 0.4					+ 0.2 / - 0.4				

CIE Pub.117 Corrected 732.6 lm Total Lamp Luminous Flux.(8log(F/F0) = -1.1)

Test System:HOPOO HPG1800  
 Temperature:25.3DEG  
 Operators:  
 Test Date:2022年01月04日

Test Set: 8.0deg/s C-Gamma (TYPE C)  
 Humidity:65.0%  
 Test Distance:8.800 m  
 Remarks:

**GONIOPHOTOMETERS SYSTEM TEST REPORT**

**UTILIZATION FACTORS TABLE**

Report number:

<b>MANUFACTURER:</b>			
<b>Address:</b>			
<b>NAME:</b> RS-HE-2835-64-24-8-4.2-8-4000K-20-5M		<b>TYPE:</b> LED Strip	<b>WEIGHT:</b>
<b>SPECIFICATION:</b> 2835/64D	<b>CCT(K):</b> 4000	<b>DIMENSION:</b> 1M*0.008M	<b>SERIAL No.:</b> 20220104001

REFLECTANCE										
Ceiling	0.8	0.8	0.8	0.7	0.7	0.7	0.5	0.5	0.5	0
Walls	0.7	0.5	0.3	0.7	0.5	0.3	0.7	0.5	0.3	0
Working plane	0.2	0.2	0.2	0.2	0.2	0.2	0.2	0.2	0.2	0
<b>ROOM INDEX</b>	<b>UTILIZATION FACTORS (PERCENT) <math>k(RI) \times RCR = 5</math></b>									
<b>k = 0.60</b>	55	44	37	55	43	36	53	43	36	30
<b>0.80</b>	65	54	46	64	53	46	62	52	45	38
<b>1.00</b>	74	62	55	72	62	55	70	63	54	46
<b>1.25</b>	81	70	63	79	69	62	76	68	61	53
<b>1.50</b>	86	76	69	84	75	68	81	73	67	58
<b>2.00</b>	93	84	77	91	83	76	87	80	75	66
<b>2.50</b>	97	89	83	95	87	82	90	84	79	70
<b>3.00</b>	101	93	88	98	91	86	93	88	84	74
<b>4.00</b>	105	99	94	102	97	92	97	93	89	79
<b>5.00</b>	107	102	98	104	100	96	99	96	92	82
<b>ROOM INDEX</b>	<b>UF(total)</b>									<b>Direct</b>
According to DIN EN 13032-2 2004			Suspended				SHRNOM = 1.25			

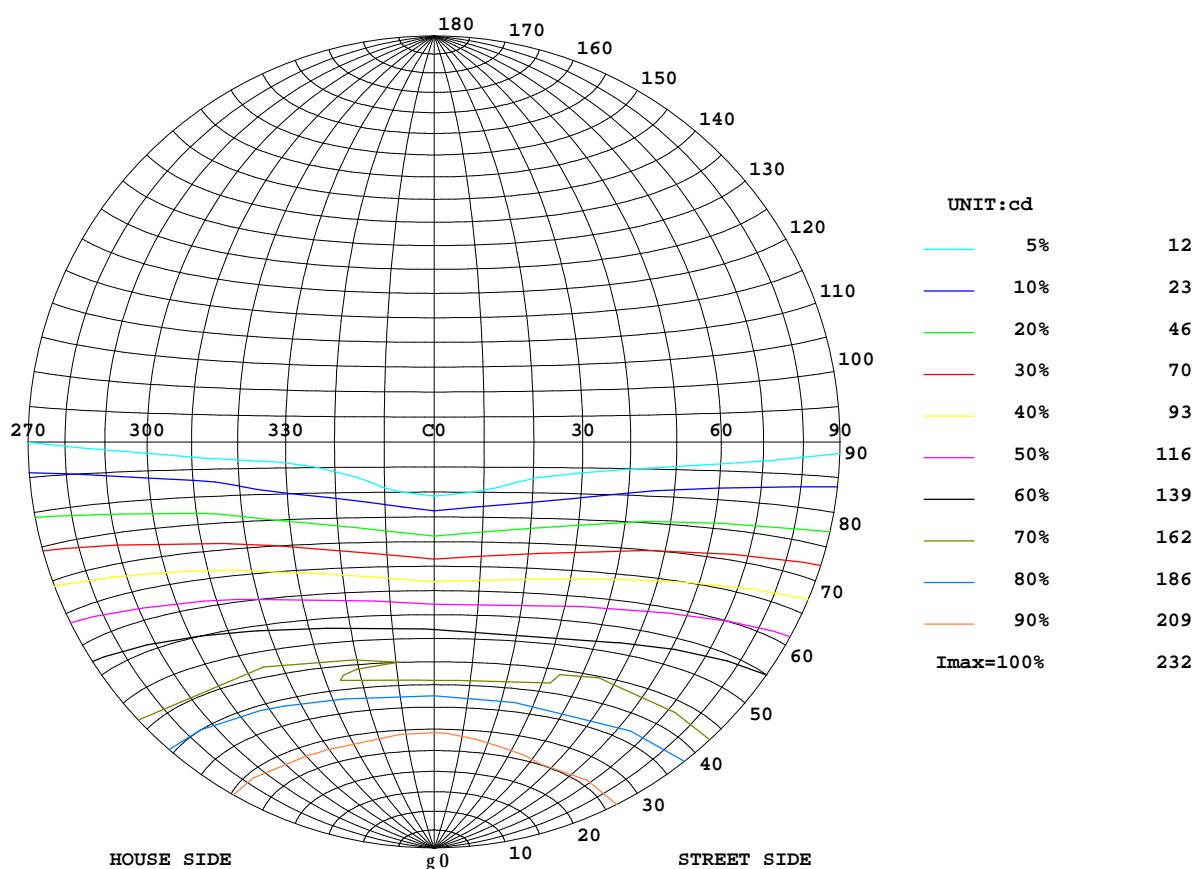
Test System:HOPOO HPG1800  
 Temperature:25.3DEG  
 Operators:  
 Test Date:2022年01月04日

Test Set: 8.0deg/s C-Gamma (TYPE C)  
 Humidity:65.0%  
 Test Distance:8.800 m  
 Remarks:

ISOCANDELA DIAGRAM

Report number:

MANUFACTURER:			
Address:			
NAME: RS-HE-2835-64-24-8-4.2-8-4000K-20-5M		TYPE: LED Strip	WEIGHT:
SPECIFICATION: 2835/64D	CCT(K): 4000	DIMENSION: 1M*0.008M	SERIAL No.: 20220104001



Test System:HOPOO HPG1800  
 Temperature:25.3DEG  
 Operators:  
 Test Date:2022年01月04日

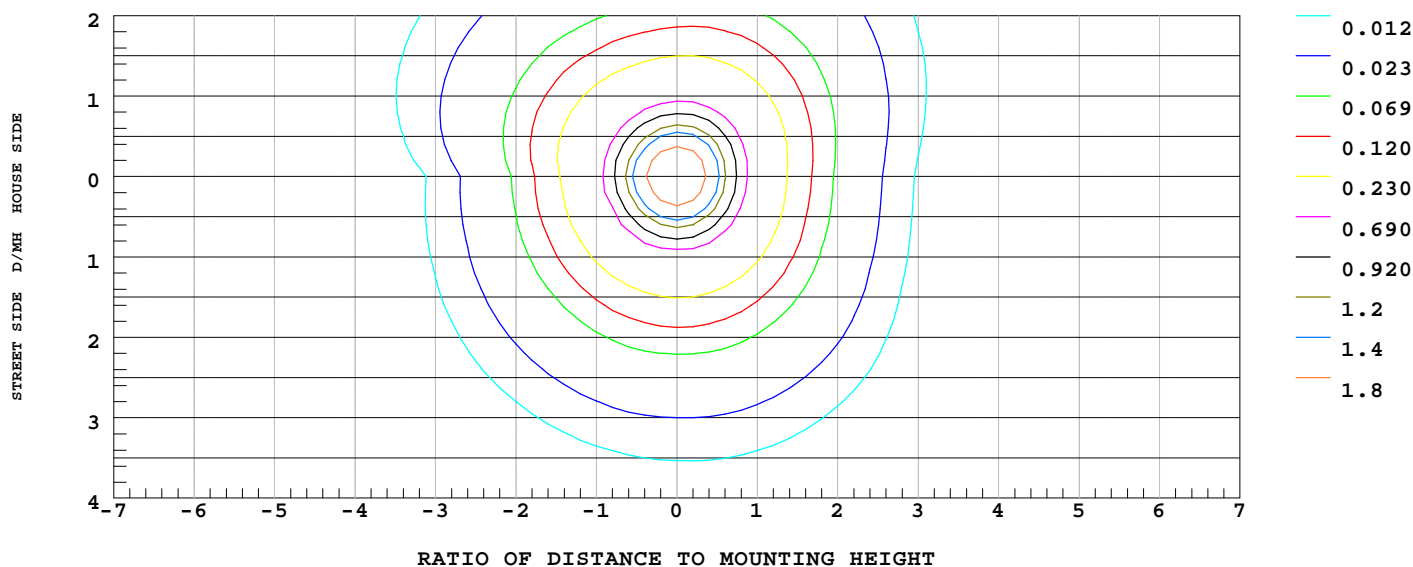
Test Set: 8.0deg/s C-Gamma (TYPE C)  
 Humidity:65.0%  
 Test Distance:8.800 m  
 Remarks:

ISOLUX DIAGRAM

Report number:

MANUFACTURER:			
Address:			
NAME: RS-HE-2835-64-24-8-4.2-8-4000K-20-5M		TYPE: LED Strip	WEIGHT:
SPECIFICATION: 2835/64D	CCT(K): 4000	DIMENSION: 1M*0.008M	SERIAL No.: 20220104001

ILLUMINANCE AT MH=10 m, Enadir = 2.31 lx



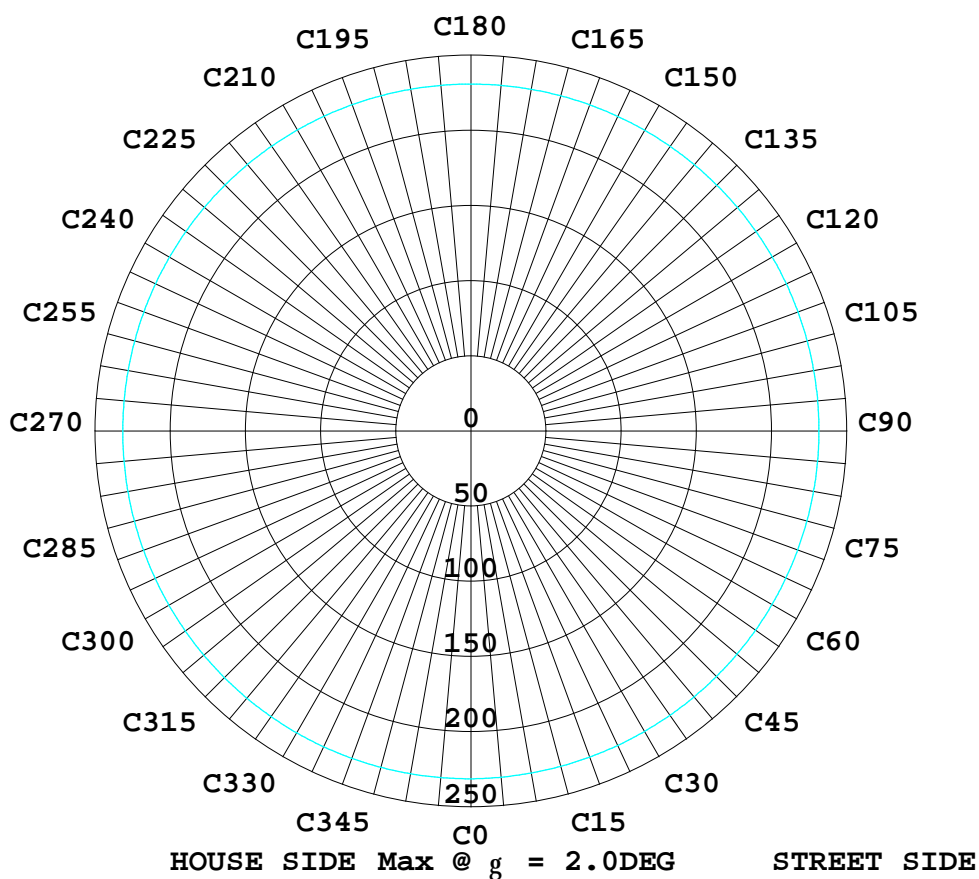
Test System:HOPOO HPG1800  
 Temperature:25.3DEG  
 Operators:  
 Test Date:2022年01月04日

Test Set: 8.0deg/s C-Gamma (TYPE C)  
 Humidity:65.0%  
 Test Distance:8.800 m  
 Remarks:

ISOCANDELA DIAGRAM

Report number:

MANUFACTURER:			
Address:			
NAME: RS-HE-2835-64-24-8-4.2-8-4000K-20-5M		TYPE: LED Strip	WEIGHT:
SPECIFICATION: 2835/64D	CCT(K): 4000	DIMENSION: 1M*0.008M	SERIAL No.: 20220104001



Test System:HOPOO HPG1800  
 Temperature:25.3DEG  
 Operators:  
 Test Date:2022年01月04日

Test Set: 8.0deg/s C-Gamma (TYPE C)  
 Humidity:65.0%  
 Test Distance:8.800 m  
 Remarks:

LUMINOUS DISTRIBUTION INTENSITY DATA

Report number:

MANUFACTURER:			
Address:			
NAME: RS-HE-2835-64-24-8-4.2-8-4000K-20-5M		TYPE: LED Strip	WEIGHT:
SPECIFICATION: 2835/64D	CCT(K): 4000	DIMENSION: 1M*0.008M	SERIAL No.: 20220104001

UNIT: cd

γ (DEG)	C (DEG)							
	0	45	90	135	180	225	270	315
0.0	231	231	232	232	231	231	232	232
5.0	231	230	231	230	230	231	231	232
10.0	230	227	228	227	227	230	229	230
15.0	227	223	224	223	222	227	225	228
20.0	222	217	219	217	216	222	220	221
25.0	216	209	212	209	209	216	214	209
30.0	205	200	203	200	198	208	205	199
35.0	192	189	193	188	180	199	198	193
40.0	178	176	181	175	164	187	182	183
45.0	161	161	148	161	146	175	168	160
50.0	146	146	155	145	127	161	153	160
55.0	126	128	139	128	106	147	136	146
60.0	102	109	121	109	83.3	129	118	128
65.0	76.2	89.9	101	89.1	61.5	110	97.4	109
70.0	52.1	68.8	80.4	68.1	41.3	89.4	75.6	90.5
75.0	28.4	47.4	55.4	47.0	21.6	67.3	52.7	68.8
80.0	8.20	26.5	35.5	27.2	5.96	42.7	31.1	44.9
85.0	6.27	12.0	19.4	12.1	2.86	25.7	16.4	27.4
90.0	5.34	3.87	8.90	4.02	2.94	11.4	6.35	12.7
95.0	5.11	2.55	5.80	2.71	3.02	6.04	2.94	6.58
100.0	4.95	2.71	5.34	2.86	3.17	5.73	2.86	5.65
105.0	4.87	2.86	5.18	3.02	3.32	5.57	3.02	5.57
110.0	4.80	3.02	5.03	3.09	3.48	5.42	3.09	5.42
115.0	4.80	3.17	5.03	3.17	3.63	5.34	3.25	5.42
120.0	4.80	3.32	4.95	3.32	3.79	5.18	3.40	5.34
125.0	4.80	3.48	4.95	3.40	3.94	5.18	3.56	5.34
130.0	4.87	3.63	5.03	3.56	4.10	5.18	3.71	5.26
135.0	4.95	3.79	5.03	3.71	4.25	5.18	3.87	5.26
140.0	4.95	3.94	5.11	3.87	4.41	5.26	4.02	5.26
145.0	5.03	4.10	5.11	4.02	4.56	5.26	4.18	5.26
150.0	5.11	4.18	5.18	4.18	4.72	5.34	4.25	5.26
155.0	5.11	4.33	5.18	4.25	4.80	5.34	4.33	5.34
160.0	5.18	4.41	5.26	4.33	4.95	5.34	4.49	5.34
165.0	5.26	4.49	5.26	4.41	5.03	5.34	4.56	5.34
170.0	5.26	4.56	5.26	4.49	5.11	5.34	4.56	5.34
175.0	5.26	4.64	5.26	4.56	5.11	5.34	4.64	5.26
180.0	5.26	4.72	5.18	4.72	5.42	5.18	4.72	5.18

Test System:HOPOO HPG1800  
 Temperature:25.3DEG  
 Operators:  
 Test Date:2022年01月04日

Test Set: 8.0deg/s C-Gamma (TYPE C)  
 Humidity:65.0%  
 Test Distance:8.800 m  
 Remarks: