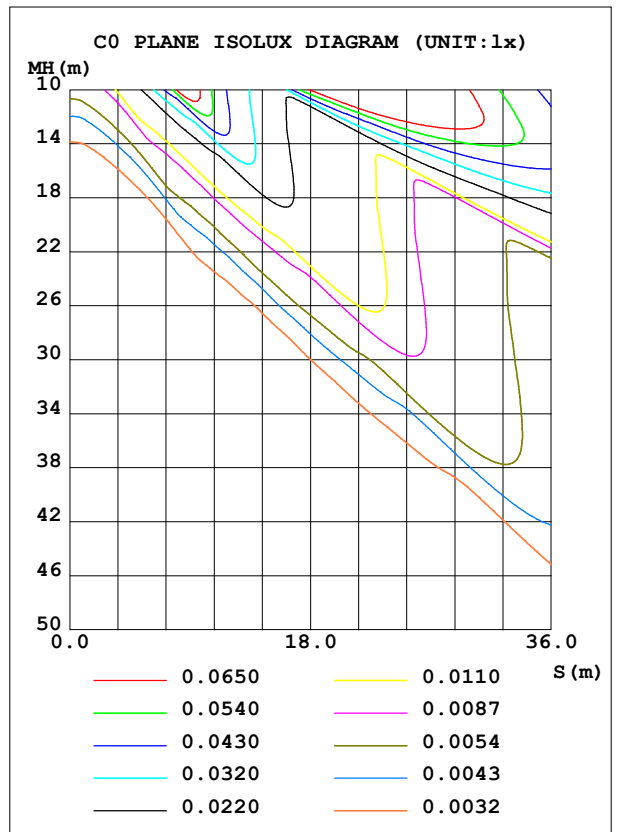
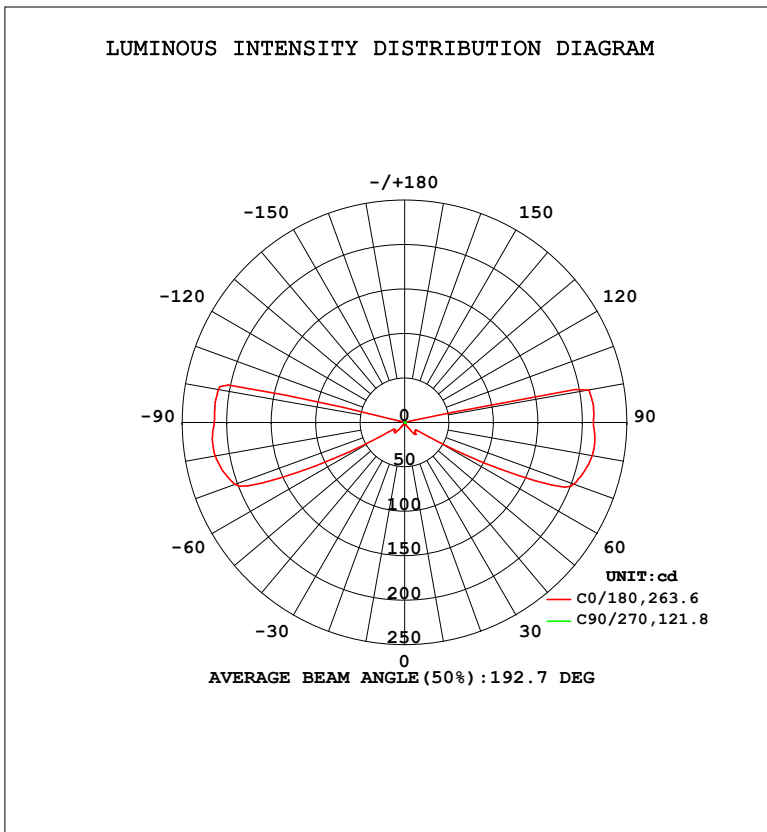


LUMINAIRE PHOTOMETRIC TEST REPORT

Test:U:110.1V I:0.1118A P:11.68W PF:0.9488 Freq:50.01Hz Lamp Flux:272.278x1 lm		
NAME: ALWL0086 3000K	TYPE:	WEIGHT:
SPEC.:	DIM.:	SERIAL No.:
MFR.: Alpha	SUR.:	Shielding Angle:

DATA OF LAMP		PHOTOMETRIC DATA				Eff: 23.31 lm/W
MODEL	ALWL0086	I <sub>max</sub> (cd)	217.2	S/MH (C0/180)	15.84	
NOMINAL POWER (W)	10	LOR (%)	100.0	S/MH (C90/270)	1.21	
RATED VOLTAGE (V)		TOTAL FLUX (lm)	272.28	η UP, DN (C0-180)	17.0, 31.5	
NOMINAL FLUX (lm)	272.278	CIE CLASS	SEMI-D.	η UP, DN (C180-360)	19.3, 32.3	
LAMPS INSIDE	1	η up (%)	36.2	CIBSE SHR NOM	0.75	
TEST VOLTAGE (V)		η down (%)	63.8	CIBSE SHR MAX	0.85	



C Range: 0 - 360DEG  
 C Interval: 22.5DEG  
 Test Speed: HIGH  
 Temperature: 25.2 °C  
 Operators: Brooke  
 Test Date: 2022-05-06

γ Range: 0 - 180DEG  
 γ Interval: 1.0DEG  
 Test System: EVERFINE GO-R5000\_V2 SYSTEM V2.00.459  
 Humidity: 55.0%  
 Test Distance: 2.900m [K=0.8817]  
 Remarks:

ZONAL FLUX DIAGRAM

ZONAL FLUX DIAGRAM:

γ	C0	C45	C90	C135	C180	C225	C270	C315	γ	Φ zone	Φ total	%lum, lamp
10	0.7708	0.6777	0.5911	0.6546	0.7219	0.6646	0.6036	0.6887	0- 10	0.0613	0.0613	0.02,0.02
20	1.468	0.8772	0.5431	0.7965	1.282	0.8425	0.5571	0.8674	10- 20	0.2186	0.2799	0.10,0.10
30	4.002	1.487	0.4928	1.178	2.939	1.442	0.5036	1.340	20- 30	0.5816	0.8615	0.32,0.32
40	16.95	2.715	0.4416	1.935	11.17	2.525	0.4437	2.291	30- 40	1.736	2.598	0.95,0.95
50	15.69	6.222	0.3752	3.324	15.00	4.432	0.3788	4.180	40- 50	4.983	7.580	2.78,2.78
60	45.73	15.71	0.3146	5.734	33.63	8.955	0.3241	7.519	50- 60	6.932	14.51	5.33,5.33
70	202.7	17.59	0.2459	9.821	203.5	16.06	0.2513	14.12	60- 70	24.76	39.28	14.4,14.4
80	214.1	14.63	0.1748	10.15	216.2	16.07	0.1777	15.65	70- 80	57.26	96.54	35.5,35.5
90	212.3	13.04	0.0789	9.245	214.2	14.42	0.0903	15.38	80- 90	77.07	173.6	63.8,63.8
100	210.5	4.090	0.0768	6.144	212.8	11.49	0.0690	8.201	90-100	75.52	249.1	91.5,91.5
110	0.9611	11.86	0.0902	6.470	0.7087	10.17	0.0827	13.19	100-110	18.49	267.6	98.3,98.3
120	0.8671	7.176	0.0972	4.119	0.6470	6.978	0.0901	6.418	110-120	3.148	270.8	99.4,99.4
130	0.4228	2.640	0.1138	1.897	0.3194	1.970	0.1014	0.6306	120-130	1.165	271.9	99.9,99.9
140	0.2151	0.2337	0.1242	0.0555	0.1509	0.0379	0.1167	0.0520	130-140	0.2398	272.2	100,100
150	0.0273	0.0512	0.1217	0.0714	0.0473	0.0555	0.1014	0.0481	140-150	0.0556	272.2	100,100
160	0.0280	0.0228	0.1197	0.0370	0.0323	0.0598	0.0793	0.0473	150-160	0.0268	272.3	100,100
170	0.0116	0.0469	0.1205	0.0400	0.0203	0.0220	0.0603	0.0718	160-170	0.0142	272.3	100,100
180	0.0848	0.0858	0.1198	0.0826	0.0882	0.0865	0.0864	0.0907	170-180	0.0055	272.3	100,100
DEG	LUMINOUS INTENSITY:cd									UNIT:lm		

Conical surface Flux(90deg): 4.6981 lm

%lum = 1.7%  
 %lamp = 1.7%

Conical surface Flux(120deg): 14.513 lm

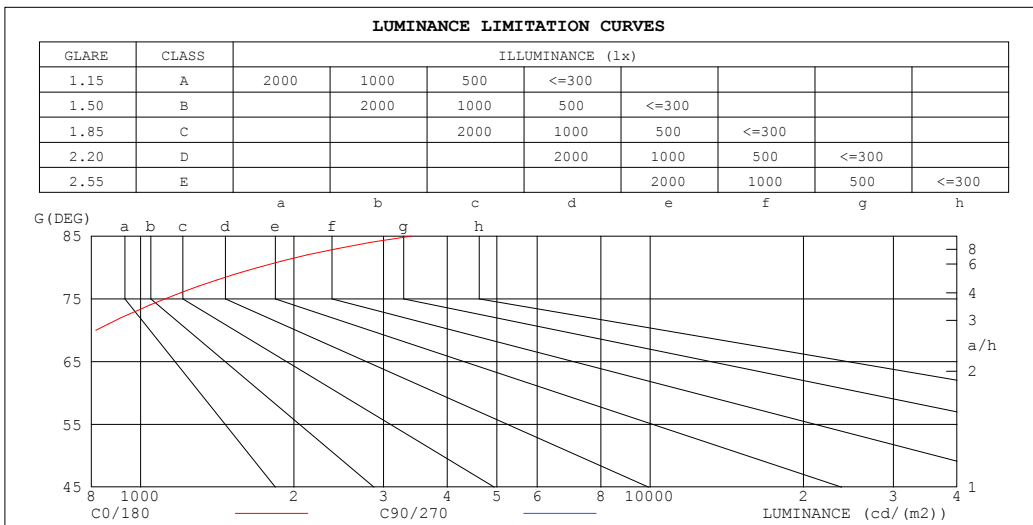
%lum = 5.3%  
 %lamp = 5.3%

C Range: 0 - 360DEG  
 C Interval: 22.5DEG  
 Test Speed: HIGH  
 Temperature:25.2℃  
 Operators:Brooke  
 Test Date:2022-05-06

γ Range: 0 - 180DEG  
 γ Interval: 1.0DEG  
 Test System:EVERFINE GO-R5000\_V2 SYSTEM V2.00.459  
 Humidity:55.0%  
 Test Distance:2.900m [K=0.8817]  
 Remarks:

LUMINANCE LIMITATION CURVES

Test:U:110.1V I:0.1118A P:11.68W PF:0.9488 Freq:50.01Hz Lamp Flux:272.278x1 lm		
NAME: ALWL0086 3000K	TYPE:	WEIGHT:
SPEC.:	DIM.:	SERIAL No.:
MFR.: Alpha	SUR.:	Shielding Angle:



LUMINANCE cd/(m2)		
G (DEG)	C0/180	C90/270
85	3395	2
80	1699	1
75	1117	1
70	817	1
65	462	1
60	126	1
55	36	1
50	34	1
45	34	1

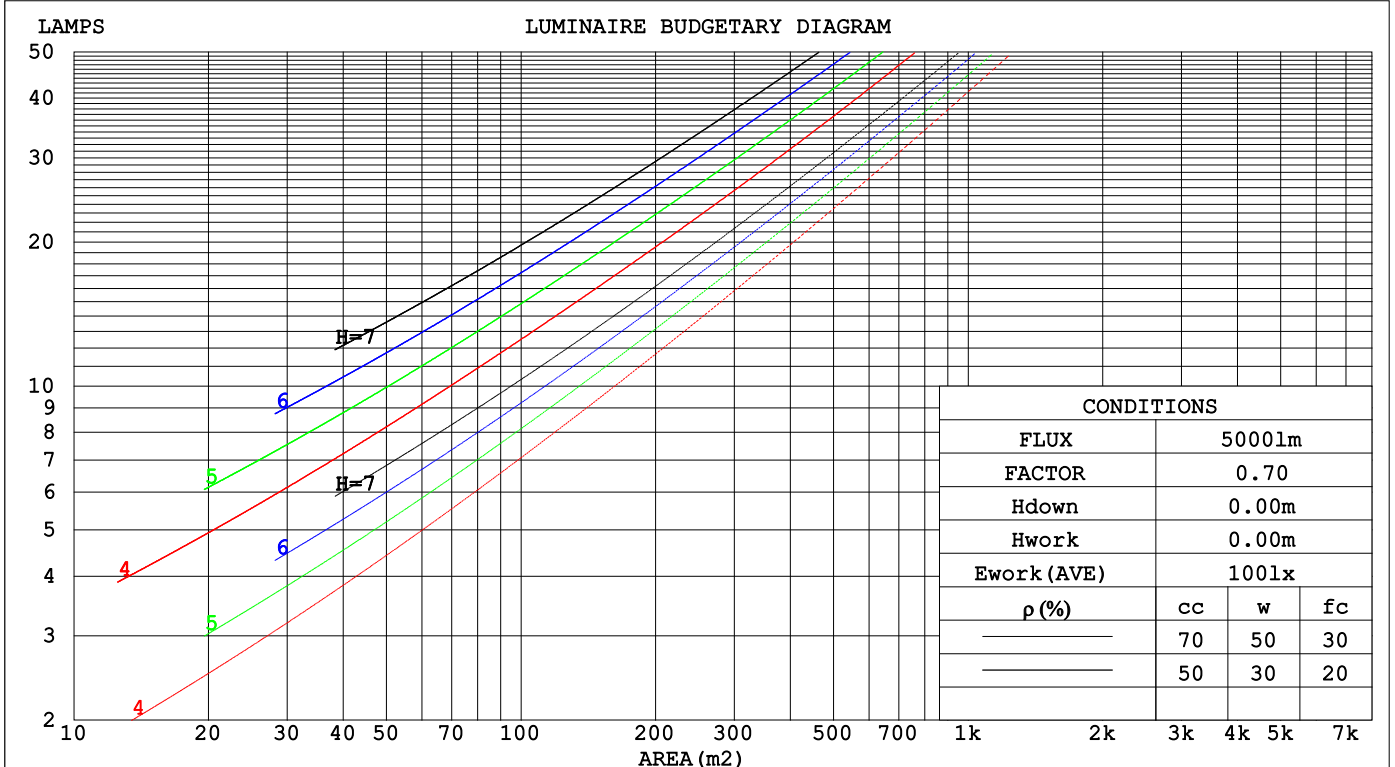
C Range: 0 - 360DEG  
 C Interval: 22.5DEG  
 Test Speed: HIGH  
 Temperature: 25.2°C  
 Operators: Brooke  
 Test Date: 2022-05-06

γ Range: 0 - 180DEG  
 γ Interval: 1.0DEG  
 Test System: EVERFINE GO-R5000\_V2 SYSTEM V2.00.459  
 Humidity: 55.0%  
 Test Distance: 2.900m [K=0.8817]  
 Remarks:

**CU AND LUMINAIRE BUDGETARY ESTIMATE DIAGRAM**

Test:U:110.1V I:0.1118A P:11.68W PF:0.9488 Freq:50.01Hz Lamp Flux:272.278x1 lm		
NAME: ALWL0086 3000K	TYPE:	WEIGHT:
SPEC.:	DIM.:	SERIAL No.:
MFR.: Alpha	SUR.:	Shielding Angle:

ρcc	80%			70%			50%			30%			10%			0
ρw	50%	30%	10%	50%	30%	10%	50%	30%	10%	50%	30%	10%	50%	30%	10%	0
ρfc	20%			20%			20%			20%			20%			0
RCR	RCR:Room Cavity Ratio						Coefficients of Utilization(CU)									
0.0	1.10	1.10	1.10	1.04	1.04	1.04	.91	.91	.91	.79	.79	.79	.69	.69	.69	.64
1.0	.77	.68	.60	.71	.63	.55	.60	.53	.47	.49	.44	.39	.39	.35	.31	.26
2.0	.61	.50	.40	.56	.46	.37	.46	.38	.30	.37	.30	.24	.29	.23	.18	.13
3.0	.51	.39	.30	.47	.36	.27	.38	.29	.22	.30	.23	.17	.23	.17	.12	.08
4.0	.44	.32	.23	.40	.29	.21	.33	.24	.17	.26	.19	.13	.19	.14	.09	.05
5.0	.39	.27	.19	.35	.25	.17	.29	.20	.13	.23	.16	.10	.17	.11	.07	.03
6.0	.34	.24	.16	.31	.21	.14	.26	.17	.11	.20	.14	.08	.16	.10	.05	.02
7.0	.31	.21	.13	.28	.19	.12	.23	.15	.09	.19	.12	.07	.14	.09	.04	.02
8.0	.28	.18	.12	.26	.17	.10	.21	.14	.08	.17	.11	.06	.13	.08	.04	.01
9.0	.25	.16	.10	.23	.15	.09	.19	.12	.07	.16	.10	.05	.12	.07	.03	.01
10.0	.23	.15	.09	.21	.13	.08	.18	.11	.06	.15	.09	.05	.11	.06	.03	.01



C Range: 0 - 360DEG  
 C Interval: 22.5DEG  
 Test Speed: HIGH  
 Temperature:25.2°C  
 Operators:Brooke  
 Test Date:2022-05-06

γ Range: 0 - 180DEG  
 γ Interval: 1.0DEG  
 Test System:EVERFINE GO-R5000\_V2 SYSTEM V2.00.459  
 Humidity:55.0%  
 Test Distance:2.900m [K=0.8817]  
 Remarks:

**WEC AND CCEC**

Test:U:110.1V I:0.1118A P:11.68W PF:0.9488 Freq:50.01Hz Lamp Flux:272.278x1 lm		
NAME: ALWL0086 3000K	TYPE:	WEIGHT:
SPEC.:	DIM.:	SERIAL No.:
MFR.: Alpha	SUR.:	Shielding Angle:

ρ <sub>cc</sub>	80%			70%			50%			30%			10%			0
ρ <sub>w</sub>	50%	30%	10%	50%	30%	10%	50%	30%	10%	50%	30%	10%	50%	30%	10%	0
ρ <sub>fc</sub>	20%			20%			20%			20%			20%			0
RCR	RCR:Room Cavity Ratio						Wall Exitance Coefficients(WEC)									
0.0																
1.0	.657	.374	.118	.638	.364	.116	.603	.346	.110	.570	.329	.106	.540	.313	.101	
2.0	.486	.266	.082	.469	.258	.080	.436	.243	.075	.406	.228	.071	.378	.214	.067	
3.0	.393	.209	.063	.378	.202	.061	.348	.189	.057	.321	.176	.054	.295	.164	.051	
4.0	.333	.173	.051	.318	.167	.049	.291	.155	.046	.266	.143	.043	.243	.132	.040	
5.0	.289	.147	.043	.276	.142	.041	.252	.131	.039	.229	.121	.036	.207	.111	.033	
6.0	.256	.128	.037	.244	.123	.036	.222	.114	.033	.201	.104	.031	.181	.095	.028	
7.0	.231	.114	.032	.220	.109	.031	.199	.101	.029	.180	.092	.027	.161	.084	.025	
8.0	.210	.102	.029	.200	.098	.028	.181	.090	.026	.163	.082	.024	.146	.075	.022	
9.0	.192	.093	.026	.183	.089	.025	.165	.082	.023	.149	.075	.021	.133	.068	.020	
10.0	.178	.085	.024	.169	.082	.023	.153	.075	.021	.137	.068	.019	.123	.062	.018	

ρ <sub>cc</sub>	80%			70%			50%			30%			10%			0
ρ <sub>w</sub>	50%	30%	10%	50%	30%	10%	50%	30%	10%	50%	30%	10%	50%	30%	10%	0
ρ <sub>fc</sub>	20%			20%			20%			20%			20%			0
RCR	RCR:Room Cavity Ratio						Ceiling Cavity Exitance Coefficients(CCEC)									
0.0	.467	.467	.467	.399	.399	.399	.272	.272	.272	.156	.156	.156	.050	.050	.050	
1.0	.483	.431	.385	.413	.370	.332	.283	.255	.229	.163	.147	.133	.052	.047	.043	
2.0	.478	.411	.355	.410	.354	.307	.281	.245	.214	.162	.142	.125	.052	.046	.041	
3.0	.470	.397	.339	.403	.342	.294	.277	.238	.206	.160	.139	.121	.051	.045	.040	
4.0	.460	.386	.329	.395	.333	.286	.272	.232	.201	.157	.136	.119	.051	.044	.039	
5.0	.451	.377	.322	.387	.326	.280	.267	.228	.198	.154	.134	.117	.050	.044	.039	
6.0	.442	.370	.318	.380	.320	.277	.262	.224	.196	.152	.132	.116	.049	.043	.038	
7.0	.433	.363	.314	.372	.315	.274	.257	.221	.194	.149	.130	.116	.048	.043	.038	
8.0	.425	.358	.312	.366	.310	.272	.253	.218	.193	.147	.129	.115	.048	.042	.038	
9.0	.418	.353	.310	.360	.306	.270	.249	.215	.192	.145	.127	.114	.047	.042	.038	
10.0	.411	.349	.308	.354	.303	.269	.246	.213	.191	.143	.126	.114	.046	.041	.038	

C Range: 0 - 360DEG  
 C Interval: 22.5DEG  
 Test Speed: HIGH  
 Temperature:25.2℃  
 Operators:Brooke  
 Test Date:2022-05-06

γ Range: 0 - 180DEG  
 γ Interval: 1.0DEG  
 Test System:EVERFINE GO-R5000\_V2 SYSTEM V2.00.459  
 Humidity:55.0%  
 Test Distance:2.900m [K=0.8817]  
 Remarks:

UGR(Unified Glare Rating) Table

Test:U:110.1V I:0.1118A P:11.68W PF:0.9488 Freq:50.01Hz										
Lamp Flux:272.278x1 lm										
NAME: ALWL0086 3000K					TYPE:			WEIGHT:		
SPEC.:					DIM.:			SERIAL No.:		
MFR.: Alpha					SUR.:			Shielding Angle:		
ceiling/cavity	0.7	0.7	0.5	0.5	0.3	0.7	0.7	0.5	0.5	0.3
walls	0.5	0.3	0.5	0.3	0.3	0.5	0.3	0.5	0.3	0.3
working plane	0.2	0.2	0.2	0.2	0.2	0.2	0.2	0.2	0.2	0.2
Room dimensions	Viewed crosswise					Viewed endwise				
x = 2H y = 2H	1.6	3.0	2.3	3.8	4.8	-14.9	-13.4	-14.1	-12.6	-11.7
3H	13.6	15.0	14.4	15.8	16.8	-14.8	-13.5	-14.1	-12.7	-11.6
4H	17.5	18.8	18.3	19.6	20.7	-14.7	-13.4	-13.9	-12.6	-11.6
6H	20.9	22.1	21.7	22.9	24.0	-14.6	-13.3	-13.8	-12.5	-11.4
8H	22.5	23.7	23.2	24.5	25.6	-14.5	-13.3	-13.7	-12.4	-11.4
12H	24.1	25.3	24.9	26.1	27.2	-14.4	-13.3	-13.6	-12.4	-11.3
4H 2H	1.6	2.9	2.4	3.7	4.8	-5.5	-4.2	-4.7	-3.4	-2.4
3H	13.6	14.8	14.4	15.6	16.7	-4.6	-3.4	-3.8	-2.5	-1.4
4H	18.0	19.1	18.8	20.0	21.1	-4.5	-3.4	-3.7	-2.5	-1.4
6H	21.9	22.9	22.7	23.8	24.9	-4.6	-3.6	-3.8	-2.7	-1.6
8H	23.7	24.6	24.5	25.5	26.7	-4.7	-3.7	-3.8	-2.8	-1.7
12H	25.5	26.4	26.4	27.3	28.5	-4.7	-3.8	-3.9	-2.9	-1.8
8H 4H	17.9	18.8	18.7	19.8	20.9	6.3	7.3	7.2	8.2	9.3
6H	22.2	23.1	23.1	24.0	25.2	6.3	7.1	7.1	8.1	9.2
8H	24.4	25.2	25.3	26.1	27.3	6.2	7.0	7.1	7.9	9.1
12H	26.6	27.4	27.5	28.3	29.5	6.1	6.9	7.0	7.8	9.0
12H 4H	17.8	18.7	18.6	19.6	20.8	10.6	11.6	11.5	12.5	13.6
6H	22.1	22.9	23.0	23.9	25.1	10.8	11.6	11.7	12.5	13.7
8H	24.4	25.1	25.3	26.1	27.3	10.8	11.5	11.7	12.4	13.6
Variations with the observer position at spacings(CIE Pub.117):										
S = 1.0H	+ 0.1 / - 0.1					+ 0.1 / - 0.2				
1.5H	+ 0.3 / - 0.3					+ 0.3 / - 0.3				
2.0H	+ 0.3 / - 0.4					+ 1.3 / - 1.0				

CIE Pub.117, 272.3 lm Total Lamp Luminous Flux Corrected (8log(F/F0) = -4.5)  
 Area: 0.72 m2

C Range: 0 - 360DEG  
 C Interval: 22.5DEG  
 Test Speed: HIGH  
 Temperature:25.2℃  
 Operators:Brooke  
 Test Date:2022-05-06

γ Range: 0 - 180DEG  
 γ Interval: 1.0DEG  
 Test System:EVERFINE GO-R5000\_V2 SYSTEM V2.00.459  
 Humidity:55.0%  
 Test Distance:2.900m [K=0.8817]  
 Remarks:

**UTILIZATION FACTORS TABLE**

Test:U:110.1V I:0.1118A P:11.68W PF:0.9488 Freq:50.01Hz Lamp Flux:272.278x1 lm		
NAME: ALWL0086 3000K	TYPE:	WEIGHT:
SPEC.:	DIM.:	SERIAL No.:
MFR.: Alpha	SUR.:	Shielding Angle:

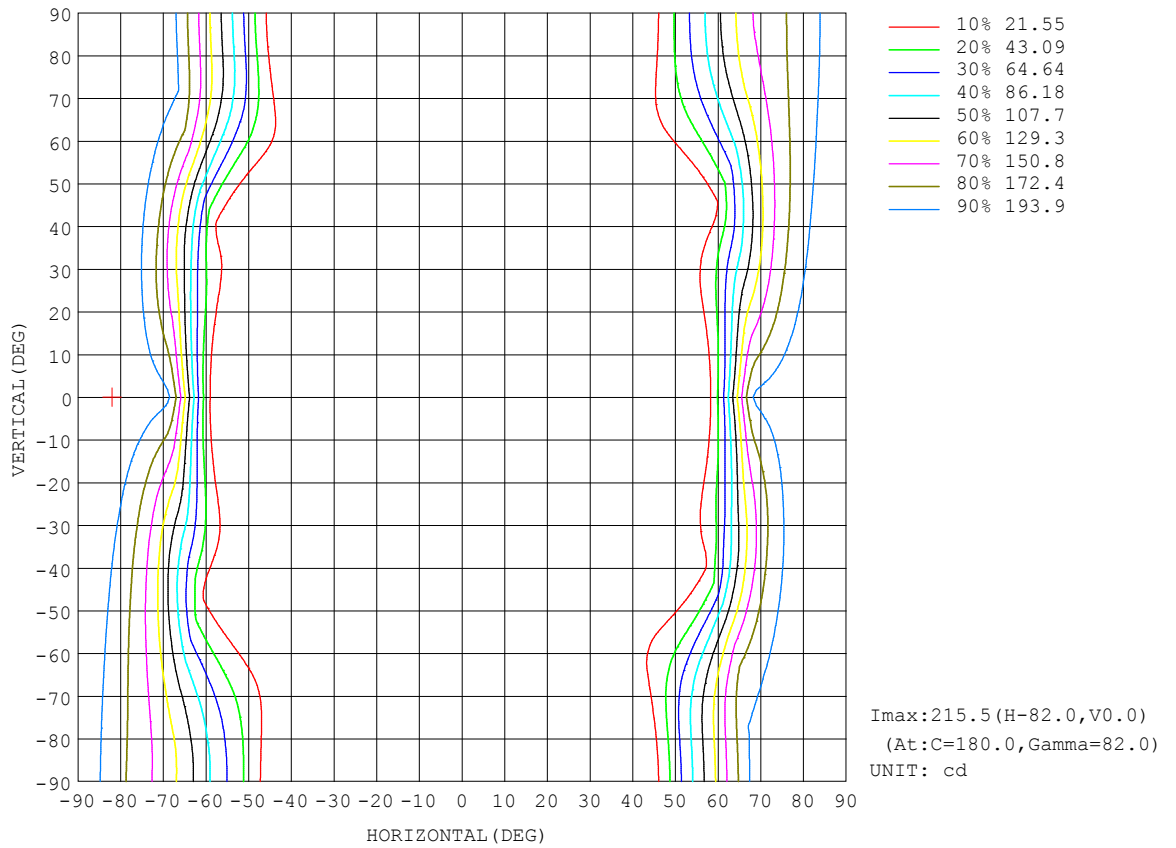
REFLECTANCE										
Ceiling	0.8	0.8	0.8	0.7	0.7	0.7	0.5	0.5	0.5	0
Walls	0.7	0.5	0.3	0.7	0.5	0.3	0.7	0.5	0.3	0
Working plane	0.2	0.2	0.2	0.2	0.2	0.2	0.2	0.2	0.2	0
ROOM INDEX	UTILIZATION FACTORS (PERCENT) $k(RI) \times RCR = 5$									
k = 0.60	32	17	9	30	17	9	28	16	8	2
0.80	38	22	12	36	21	11	33	19	11	2
1.00	43	26	14	41	25	14	37	26	13	3
1.25	49	31	18	46	29	18	41	26	16	4
1.50	54	35	22	50	33	21	44	30	19	6
2.00	61	43	29	57	40	28	50	36	25	10
2.50	67	49	36	62	46	34	54	41	30	13
3.00	71	54	41	66	51	39	58	45	35	17
4.00	77	62	50	72	58	47	63	51	42	22
5.00	82	68	56	76	64	53	66	56	47	26
ROOM INDEX	UF(total)									Direct
According to DIN EN 13032-2 2004			Suspended				SHRNOM = 1.25			

C Range: 0 - 360DEG  
 C Interval: 22.5DEG  
 Test Speed: HIGH  
 Temperature: 25.2°C  
 Operators: Brooke  
 Test Date: 2022-05-06

$\gamma$  Range: 0 - 180DEG  
 $\gamma$  Interval: 1.0DEG  
 Test System: EVERFINE GO-R5000\_V2 SYSTEM V2.00.459  
 Humidity: 55.0%  
 Test Distance: 2.900m [K=0.8817]  
 Remarks:

ISOCANDELA DIAGRAM

Test:U:110.1V I:0.1118A P:11.68W PF:0.9488 Freq:50.01Hz Lamp Flux:272.278x1 lm		
NAME: ALWL0086 3000K	TYPE:	WEIGHT:
SPEC.:	DIM.:	SERIAL No.:
MFR.: Alpha	SUR.:	Shielding Angle:



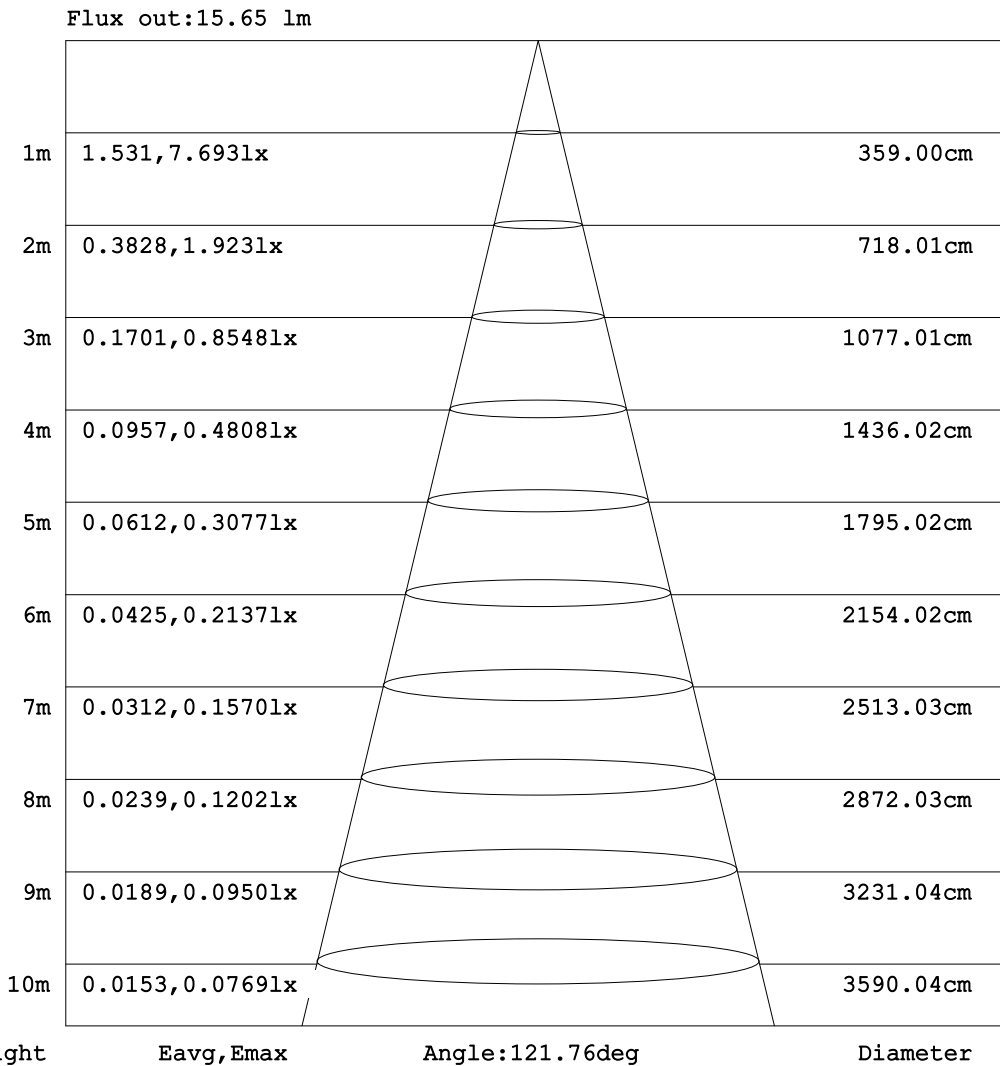
C Range: 0 - 360DEG  
C Interval: 22.5DEG  
Test Speed: HIGH  
Temperature:25.2°C  
Operators:Brooke  
Test Date:2022-05-06

γ Range: 0 - 180DEG  
γ Interval: 1.0DEG  
Test System:EVERFINE GO-R5000\_V2 SYSTEM V2.00.459  
Humidity:55.0%  
Test Distance:2.900m [K=0.8817]  
Remarks:



**AAI Figure**

Test:U:110.1V I:0.1118A P:11.68W PF:0.9488 Freq:50.01Hz Lamp Flux:272.278x1 lm		
NAME: ALWL0086 3000K	TYPE:	WEIGHT:
SPEC.:	DIM.:	SERIAL No.:
MFR.: Alpha	SUR.:	Shielding Angle:



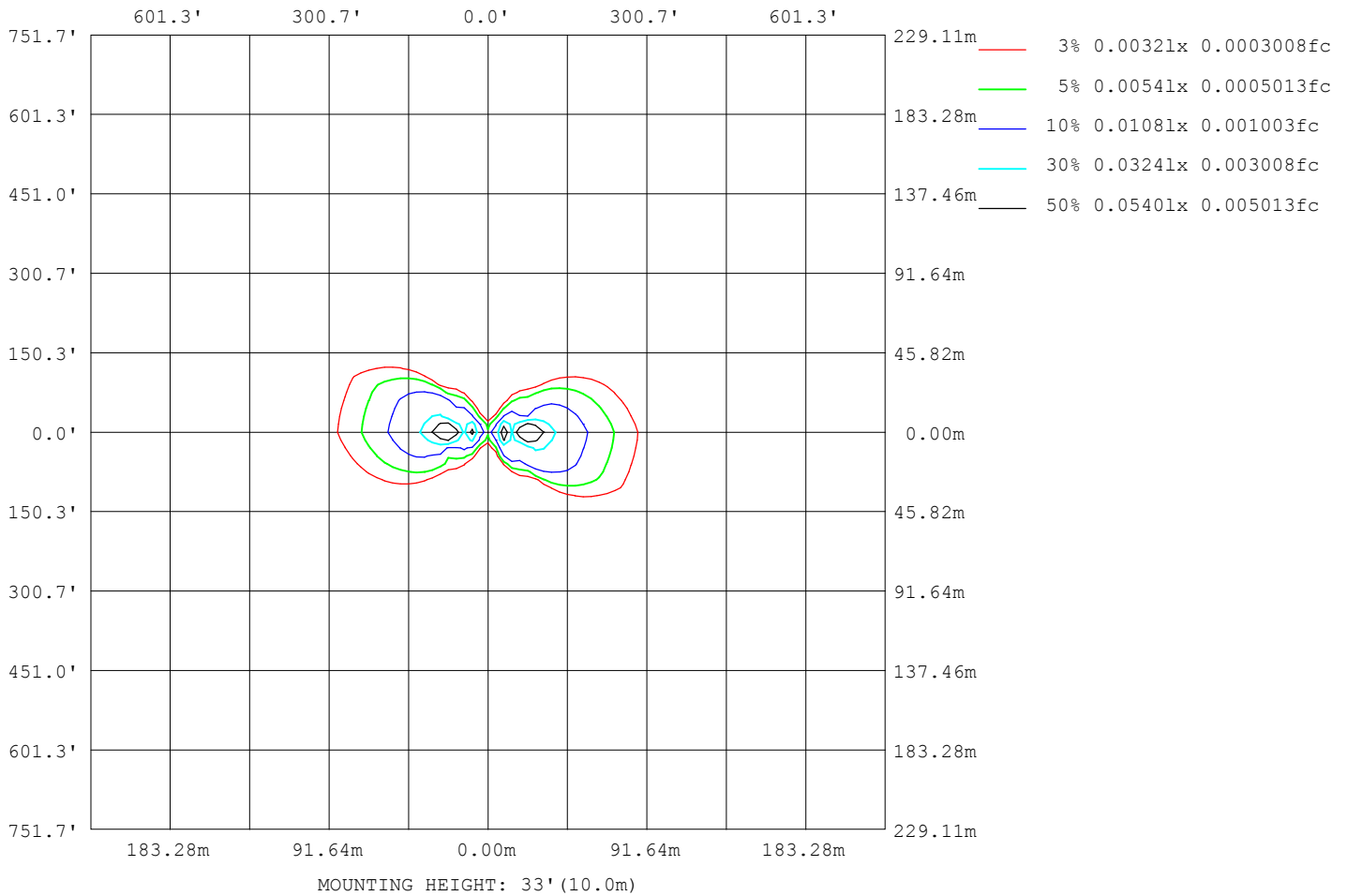
Note:The Curves indicate the illuminated area and the average illumination when the luminaire is at different distance.

C Range: 0 - 360DEG  
 C Interval: 22.5DEG  
 Test Speed: HIGH  
 Temperature:25.2°C  
 Operators:Brooke  
 Test Date:2022-05-06

γ Range: 0 - 180DEG  
 γ Interval: 1.0DEG  
 Test System:EVERFINE GO-R5000\_V2 SYSTEM V2.00.459  
 Humidity:55.0%  
 Test Distance:2.900m [K=0.8817]  
 Remarks:

**ISOLUX DIAGRAM**

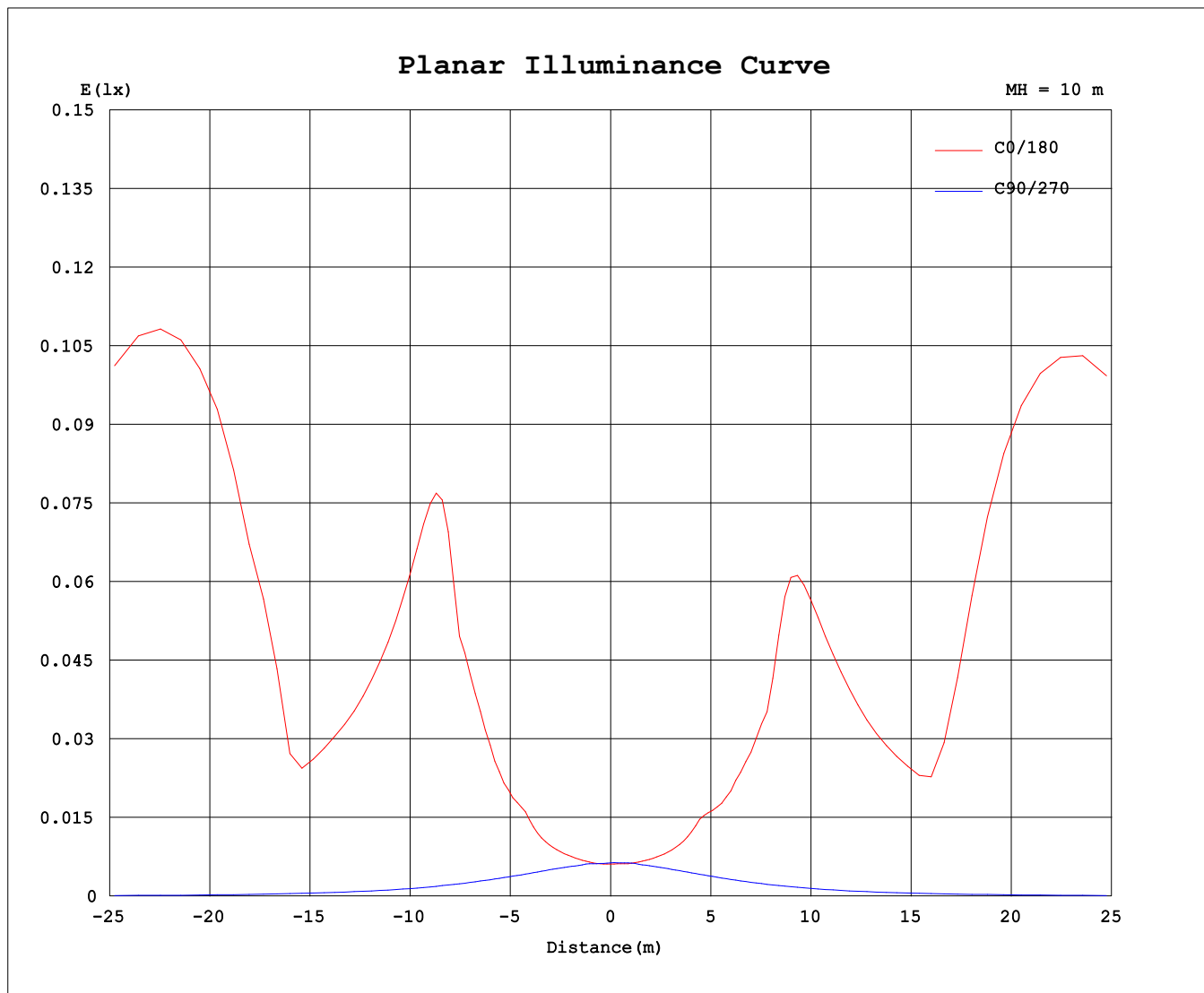
Test:U:110.1V I:0.1118A P:11.68W PF:0.9488 Freq:50.01Hz Lamp Flux:272.278x1 lm		
NAME: ALWL0086 3000K	TYPE:	WEIGHT:
SPEC.:	DIM.:	SERIAL No.:
MFR.: Alpha	SUR.:	Shielding Angle:



C Range: 0 - 360DEG  
C Interval: 22.5DEG  
Test Speed: HIGH  
Temperature:25.2°C  
Operators:Brooke  
Test Date:2022-05-06

γ Range: 0 - 180DEG  
γ Interval: 1.0DEG  
Test System:EVERFINE GO-R5000\_V2 SYSTEM V2.00.459  
Humidity:55.0%  
Test Distance:2.900m [K=0.8817]  
Remarks:

### Planar Illuminance Curve



C Range: 0 - 360DEG  
C Interval: 22.5DEG  
Test Speed: HIGH  
Temperature: 25.2°C  
Operators: Brooke  
Test Date: 2022-05-06

γ Range: 0 - 180DEG  
γ Interval: 1.0DEG  
Test System: EVERFINE GO-R5000\_V2 SYSTEM V2.00.459  
Humidity: 55.0%  
Test Distance: 2.900m [K=0.8817]  
Remarks:

LUMINOUS DISTRIBUTION INTENSITY DATA

Test:U:110.1V I:0.1118A P:11.68W PF:0.9488 Freq:50.01Hz Lamp Flux:272.278x1 lm		
NAME: ALWL0086 3000K	TYPE:	WEIGHT:
SPEC.:	DIM.:	SERIAL No.:
MFR.: Alpha	SUR.:	Shielding Angle:

Table--1

UNIT: cd

C (DEG) γ (DEG)	0	22.5	45	67.5	90	112.5	135	157.5	180	202.5	225	247.5	270	292.5	315	337.5			
0	0.62	0.62	0.62	0.62	0.62	0.62	0.62	0.62	0.62	0.62	0.62	0.62	0.62	0.62	0.62	0.62			
5	0.65	0.64	0.62	0.61	0.61	0.61	0.62	0.62	0.63	0.63	0.63	0.63	0.63	0.63	0.63	0.64			
10	0.77	0.74	0.68	0.61	0.59	0.60	0.65	0.70	0.72	0.71	0.66	0.61	0.60	0.62	0.69	0.75			
15	1.00	0.92	0.75	0.62	0.57	0.59	0.70	0.85	0.90	0.86	0.73	0.61	0.58	0.62	0.76	0.92			
20	1.47	1.25	0.88	0.63	0.54	0.59	0.80	1.11	1.28	1.15	0.84	0.62	0.56	0.63	0.87	1.21			
25	2.43	2.06	1.09	0.65	0.52	0.59	0.94	1.66	2.09	1.83	1.04	0.64	0.53	0.65	1.04	1.90			
30	4.00	3.02	1.49	0.67	0.49	0.60	1.18	2.28	2.94	2.53	1.44	0.66	0.50	0.66	1.34	2.74			
35	7.77	5.49	2.03	0.71	0.47	0.62	1.59	3.49	5.04	3.86	2.09	0.69	0.47	0.68	1.86	4.53			
40	16.9	9.78	2.71	0.75	0.44	0.63	1.94	5.64	11.2	6.32	2.53	0.73	0.44	0.70	2.29	7.73			
45	17.5	18.7	4.04	0.80	0.41	0.65	2.38	11.1	16.1	13.6	3.23	0.80	0.41	0.73	3.00	15.8			
50	15.7	17.3	6.22	0.85	0.38	0.67	3.32	13.9	15.0	15.5	4.43	0.89	0.38	0.76	4.18	17.1			
55	15.1	15.4	9.13	0.92	0.35	0.70	4.37	13.1	14.3	14.5	5.94	1.01	0.35	0.79	5.75	15.6			
60	45.7	14.2	15.7	0.99	0.31	0.72	5.73	12.1	33.6	14.0	8.95	1.15	0.32	0.82	7.52	14.5			
65	142	17.6	18.6	1.06	0.28	0.75	7.17	11.6	133	15.9	13.7	1.29	0.29	0.86	10.7	14.1			
70	203	68.0	17.6	1.12	0.25	0.77	9.82	17.1	203	63.7	16.1	1.43	0.25	0.89	14.1	24.3			
75	210	136	16.0	1.16	0.21	0.80	10.5	56.9	212	134	16.4	1.53	0.21	0.92	15.5	68.7			
80	214	181	14.6	1.15	0.17	0.82	10.1	98.7	216	184	16.1	1.59	0.18	0.94	15.6	112			
85	215	195	13.7	1.10	0.13	0.81	9.58	125	217	199	15.3	1.59	0.14	0.91	15.5	141			
90	212	196	13.0	1.02	0.08	0.76	9.25	133	214	200	14.4	1.51	0.09	0.86	15.4	150			
95	213	191	12.6	0.56	0.07	0.54	9.04	121	214	197	13.6	1.36	0.05	0.69	15.4	141			
100	210	167	4.09	0.78	0.08	0.64	6.14	89.7	213	177	11.5	0.79	0.07	0.74	8.20	112			
105	7.14	1.64	0.08	0.90	0.09	0.70	0.10	6.38	7.22	4.93	0.08	1.20	0.08	0.73	0.07	1.61			
110	0.96	0.27	11.9	0.81	0.09	0.65	6.47	0.25	0.71	0.22	10.2	1.04	0.08	0.67	13.2	0.19			
115	0.99	7.19	10.6	0.72	0.09	0.58	5.24	1.79	0.83	1.22	10.05	0.88	0.08	0.60	9.29	1.67			
120	0.87	3.11	7.18	0.64	0.10	0.51	4.12	1.37	0.65	0.66	6.98	0.74	0.09	0.52	6.42	0.20			
125	0.61	0.44	4.24	0.55	0.11	0.39	3.25	0.25	0.45	0.22	4.41	0.59	0.10	0.43	4.07	0.20			
130	0.42	0.19	2.64	0.48	0.11	0.38	1.90	0.22	0.32	0.19	1.97	0.50	0.10	0.36	0.63	0.15			
135	0.08	0.08	1.06	0.41	0.12	0.30	0.47	0.10	0.09	0.07	0.29	0.35	0.11	0.21	0.13	0.07			
140	0.22	0.12	0.23	0.28	0.12	0.16	0.06	0.12	0.15	0.11	0.04	0.15	0.12	0.11	0.05	0.09			
145	0.16	0.03	0.07	0.14	0.12	0.08	0.08	0.05	0.09	0.07	0.05	0.07	0.11	0.08	0.06	0.05			
150	0.03	0.03	0.05	0.07	0.12	0.06	0.07	0.05	0.05	0.03	0.06	0.06	0.10	0.08	0.05	0.02			
155	0.03	0.05	0.05	0.05	0.12	0.06	0.07	0.06	0.05	0.04	0.05	0.04	0.09	0.10	0.04	0.05			
160	0.03	0.03	0.02	0.05	0.12	0.07	0.04	0.05	0.03	0.04	0.06	0.03	0.08	0.11	0.05	0.05			
165	0.01	0.01	0.03	0.06	0.12	0.07	0.03	0.02	0.02	0.02	0.03	0.03	0.07	0.12	0.07	0.05			
170	0.01	0.01	0.05	0.06	0.12	0.07	0.04	0.02	0.02	0.02	0.02	0.03	0.06	0.12	0.07	0.05			
175	0.03	0.03	0.03	0.07	0.12	0.06	0.03	0.04	0.06	0.06	0.05	0.04	0.05	0.12	0.09	0.05			
180	0.08	0.08	0.09	0.10	0.12	0.08	0.08	0.08	0.09	0.09	0.09	0.09	0.09	0.09	0.09	0.08			

C Range: 0 - 360DEG  
 C Interval: 22.5DEG  
 Test Speed: HIGH  
 Temperature:25.2℃  
 Operators:Brooke  
 Test Date:2022-05-06

γ Range: 0 - 180DEG  
 γ Interval: 1.0DEG  
 Test System:EVERFINE GO-R5000\_V2 SYSTEM V2.00.459  
 Humidity:55.0%  
 Test Distance:2.900m [K=0.8817]  
 Remarks: