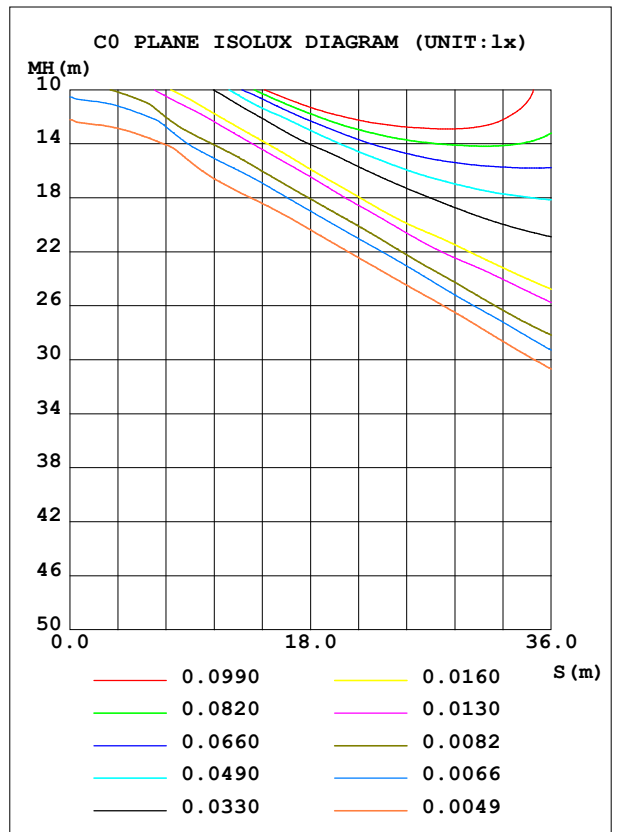
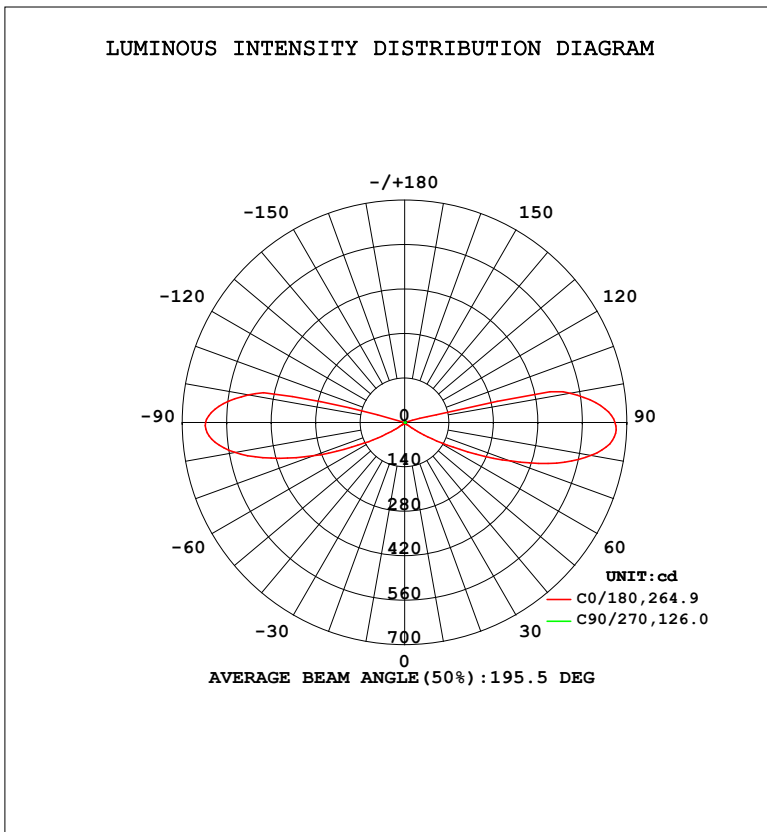


LUMINAIRE PHOTOMETRIC TEST REPORT

Test:U:110.1V I:0.1128A P:11.77W PF:0.9477 Freq:50.01Hz Lamp Flux:487.42x1 lm		
NAME: ALWL0070 3000K 35	TYPE:	WEIGHT:
SPEC.:	DIM.:	SERIAL No.:
MFR.: Alpha	SUR.:	Shielding Angle:

DATA OF LAMP		PHOTOMETRIC DATA				Eff: 41.41 lm/W
MODEL	ALWL0070	I _{max} (cd)	666.5	S/MH (C0/180)	21.29	
NOMINAL POWER (W)	10	LOR (%)	100.0	S/MH (C90/270)	1.20	
RATED VOLTAGE (V)		TOTAL FLUX (lm)	487.42	η UP, DN (C0-180)	19.7, 33.1	
NOMINAL FLUX (lm)	487.42	CIE CLASS	SEMI-D.	η UP, DN (C180-360)	18.3, 28.8	
LAMPS INSIDE	1	η up (%)	38.0	CIBSE SHR NOM	0.50	
TEST VOLTAGE (V)		η down (%)	62.0	CIBSE SHR MAX	0.65	



C Range: 0 - 360DEG
 C Interval: 22.5DEG
 Test Speed: HIGH
 Temperature: 25.2 °C
 Operators: Brooke
 Test Date: 2022-05-06

γ Range: 0 - 180DEG
 γ Interval: 1.0DEG
 Test System: EVERFINE GO-R5000_V2 SYSTEM V2.00.459
 Humidity: 55.0%
 Test Distance: 2.900m [K=0.8817]
 Remarks:

ZONAL FLUX DIAGRAM

ZONAL FLUX DIAGRAM:

γ	C0	C45	C90	C135	C180	C225	C270	C315	γ	Φ zone	Φ total	%lum, lamp
10	0.8198	0.7641	0.7087	0.7683	0.8205	0.7863	0.7283	0.7766	0- 10	0.0729	0.0729	0.01,0.01
20	1.034	0.8265	0.7195	0.8142	1.004	0.8234	0.6670	0.8375	10- 20	0.2278	0.3007	0.06,0.06
30	1.730	0.9403	0.7072	0.8948	2.104	0.8767	0.5906	0.8911	20- 30	0.4215	0.7222	0.15,0.15
40	4.123	1.114	0.5609	1.064	6.448	0.9932	0.5241	1.003	30- 40	1.007	1.729	0.35,0.35
50	18.60	1.802	0.4718	2.117	17.11	2.079	0.4465	2.160	40- 50	2.420	4.149	0.85,0.85
60	116.8	2.843	0.3999	3.119	99.00	3.132	0.3737	3.102	50- 60	10.14	14.29	2.93,2.93
70	356.0	4.602	0.3209	3.669	309.0	3.664	0.2941	3.716	60- 70	42.60	56.89	11.7,11.7
80	597.4	6.935	0.2351	4.453	543.6	4.397	0.2106	4.567	70- 80	100.7	157.6	32.3,32.3
90	662.6	8.164	0.1054	4.534	626.7	4.455	0.0971	4.589	80- 90	144.4	302.0	62,62
100	530.2	1.902	0.1367	1.194	500.5	2.015	0.0830	1.074	90-100	136.2	438.2	89.9,89.9
110	0.9014	5.366	0.1696	2.970	0.7155	3.290	0.1287	0.2710	100-110	38.35	476.6	97.8,97.8
120	1.233	3.639	0.1942	2.243	0.9265	2.665	0.1598	1.600	110-120	7.045	483.6	99.2,99.2
130	0.5362	1.709	0.2309	1.144	0.5072	1.537	0.1943	0.8773	120-130	2.818	486.5	99.8,99.8
140	0.2624	0.3285	0.2485	0.3336	0.2375	0.2938	0.2198	0.3135	130-140	0.6807	487.1	99.9,99.9
150	0.0695	0.2014	0.2555	0.2702	0.0730	0.1908	0.2165	0.1610	140-150	0.1570	487.3	100,100
160	0.0704	0.0792	0.2695	0.0955	0.0605	0.1624	0.2099	0.1007	150-160	0.0718	487.4	100,100
170	0.0421	0.1297	0.2785	0.1028	0.0404	0.0388	0.1853	0.2332	160-170	0.0379	487.4	100,100
180	0.1430	0.1452	0.1713	0.1444	0.1451	0.1434	0.1582	0.1391	170-180	0.0122	487.4	100,100
DEG	LUMINOUS INTENSITY:cd									UNIT:lm		

Conical surface Flux(90deg): 2.6363 lm

%lum = 0.5%

%lamp = 0.5%

Conical surface Flux(120deg): 14.291 lm

%lum = 2.9%

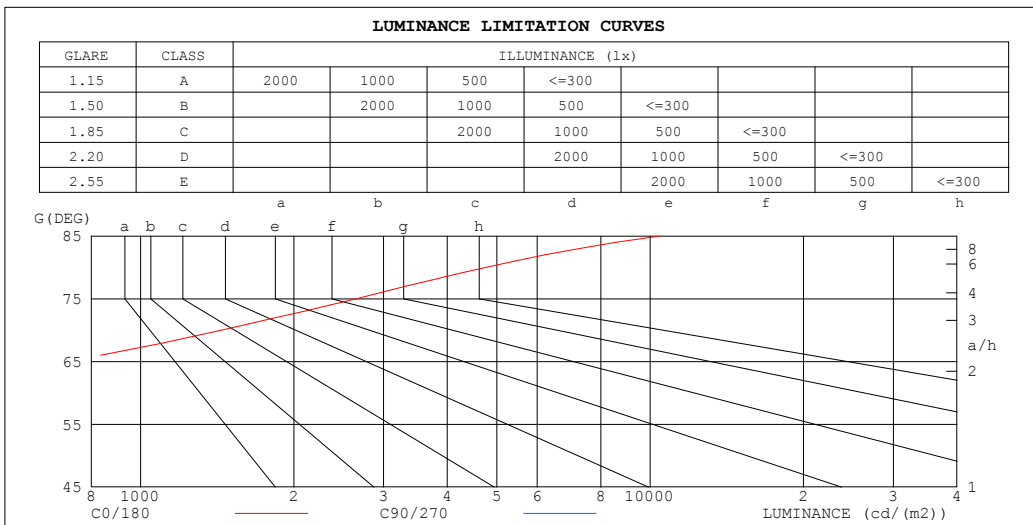
%lamp = 2.9%

C Range: 0 - 360DEG
 C Interval: 22.5DEG
 Test Speed: HIGH
 Temperature:25.2℃
 Operators:Brooke
 Test Date:2022-05-06

γ Range: 0 - 180DEG
 γ Interval: 1.0DEG
 Test System:EVERFINE GO-R5000_V2 SYSTEM V2.00.459
 Humidity:55.0%
 Test Distance:2.900m [K=0.8817]
 Remarks:

LUMINANCE LIMITATION CURVES

Test:U:110.1V I:0.1128A P:11.77W PF:0.9477 Freq:50.01Hz Lamp Flux:487.42x1 lm		
NAME: ALWL0070 3000K 35	TYPE:	WEIGHT:
SPEC.:	DIM.:	SERIAL No.:
MFR.: Alpha	SUR.:	Shielding Angle:



LUMINANCE cd/(m2)		
G (DEG)	C0/180	C90/270
85	10400	3
80	4750	2
75	2643	2
70	1437	1
65	717	1
60	323	1
55	119	1
50	40	1
45	15	1

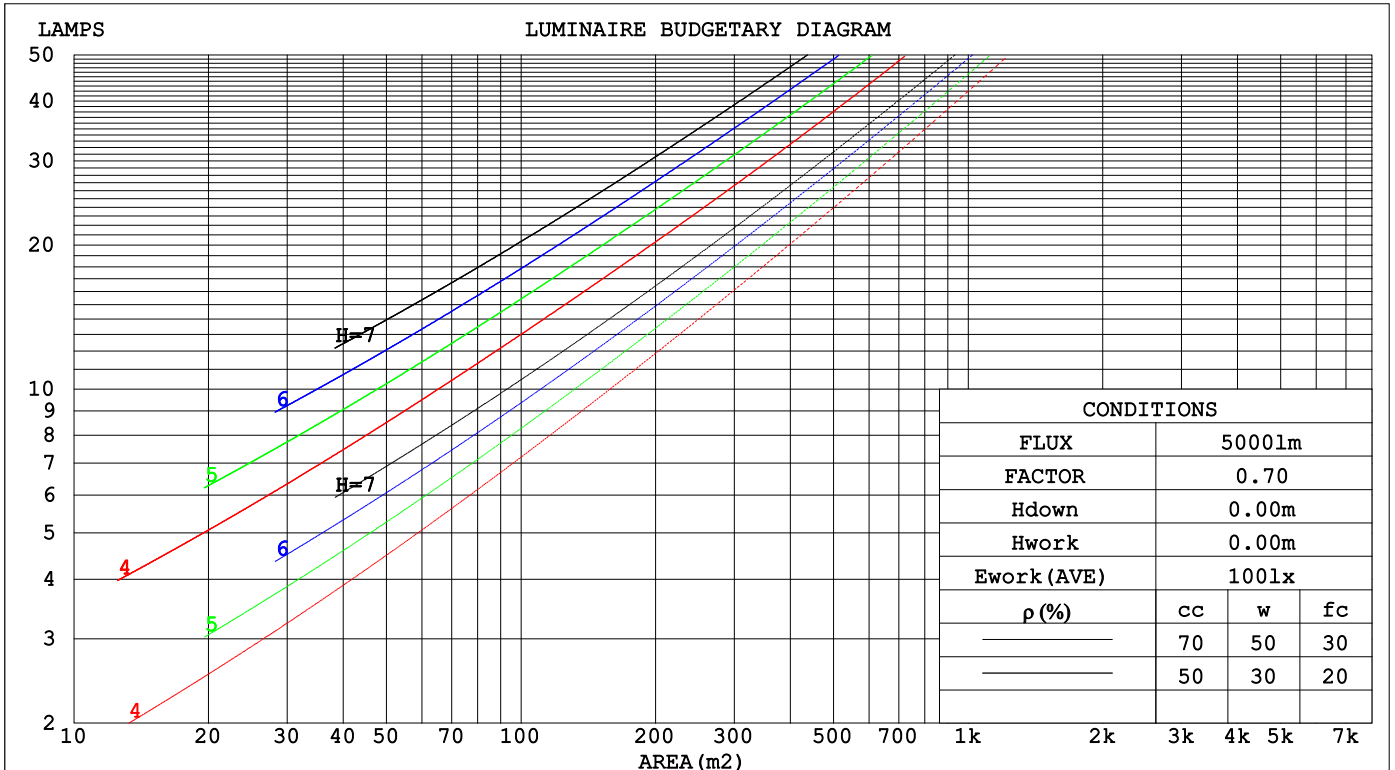
C Range: 0 - 360DEG
 C Interval: 22.5DEG
 Test Speed: HIGH
 Temperature: 25.2°C
 Operators: Brooke
 Test Date: 2022-05-06

γ Range: 0 - 180DEG
 γ Interval: 1.0DEG
 Test System: EVERFINE GO-R5000_V2 SYSTEM V2.00.459
 Humidity: 55.0%
 Test Distance: 2.900m [K=0.8817]
 Remarks:

CU AND LUMINAIRE BUDGETARY ESTIMATE DIAGRAM

Test:U:110.1V I:0.1128A P:11.77W PF:0.9477 Freq:50.01Hz Lamp Flux:487.42x1 lm		
NAME: ALWL0070 3000K 35	TYPE:	WEIGHT:
SPEC.:	DIM.:	SERIAL No.:
MFR.: Alpha	SUR.:	Shielding Angle:

pcc	80%			70%			50%			30%			10%			0
pw	50%	30%	10%	50%	30%	10%	50%	30%	10%	50%	30%	10%	50%	30%	10%	0
pfc	20%			20%			20%			20%			20%			0
RCR	RCR:Room Cavity Ratio						Coefficients of Utilization(CU)									
0.0	1.10	1.10	1.10	1.03	1.03	1.03	.90	.90	.90	.78	.78	.78	.67	.67	.67	.62
1.0	.76	.67	.58	.70	.61	.54	.58	.51	.45	.47	.42	.37	.37	.33	.29	.23
2.0	.61	.49	.39	.55	.45	.36	.45	.36	.29	.36	.29	.23	.27	.21	.16	.11
3.0	.51	.39	.29	.46	.35	.26	.37	.28	.21	.29	.22	.15	.21	.15	.10	.06
4.0	.44	.32	.23	.39	.29	.20	.32	.23	.16	.25	.17	.12	.18	.12	.07	.03
5.0	.38	.27	.18	.35	.24	.17	.28	.19	.13	.22	.15	.09	.16	.10	.06	.02
6.0	.34	.23	.15	.31	.21	.14	.25	.17	.11	.20	.13	.08	.15	.09	.04	.01
7.0	.30	.20	.13	.28	.18	.12	.23	.15	.09	.18	.11	.06	.13	.08	.04	.01
8.0	.28	.18	.11	.25	.16	.10	.21	.13	.08	.16	.10	.05	.12	.07	.03	.01
9.0	.25	.16	.10	.23	.15	.09	.19	.12	.07	.15	.09	.05	.12	.07	.03	.00
10.0	.23	.14	.09	.21	.13	.08	.18	.11	.06	.14	.08	.04	.11	.06	.02	.00



C Range: 0 - 360DEG
 C Interval: 22.5DEG
 Test Speed: HIGH
 Temperature:25.2°C
 Operators:Brooke
 Test Date:2022-05-06

γ Range: 0 - 180DEG
 γ Interval: 1.0DEG
 Test System:EVERFINE GO-R5000_V2 SYSTEM V2.00.459
 Humidity:55.0%
 Test Distance:2.900m [K=0.8817]
 Remarks:

WEC AND CCEC

Test:U:110.1V I:0.1128A P:11.77W PF:0.9477 Freq:50.01Hz Lamp Flux:487.42x1 lm		
NAME: ALWL0070 3000K 35	TYPE:	WEIGHT:
SPEC.:	DIM.:	SERIAL No.:
MFR.: Alpha	SUR.:	Shielding Angle:

ρ _{cc}	80%			70%			50%			30%			10%			0
ρ _w	50%	30%	10%	50%	30%	10%	50%	30%	10%	50%	30%	10%	50%	30%	10%	0
ρ _{fc}	20%			20%			20%			20%			20%			0
RCR	RCR:Room Cavity Ratio						Wall Exitance Coefficients(WEC)									
0.0																
1.0	.668	.380	.120	.648	.370	.117	.612	.351	.112	.578	.333	.107	.547	.317	.102	
2.0	.490	.269	.082	.472	.260	.080	.439	.244	.076	.408	.229	.072	.379	.215	.068	
3.0	.395	.210	.063	.379	.203	.061	.348	.189	.057	.320	.175	.054	.294	.163	.050	
4.0	.333	.173	.051	.319	.167	.049	.291	.154	.046	.265	.142	.043	.241	.131	.040	
5.0	.289	.147	.043	.276	.142	.041	.250	.130	.038	.227	.120	.036	.205	.109	.033	
6.0	.256	.128	.037	.244	.123	.035	.221	.113	.033	.199	.103	.030	.179	.094	.028	
7.0	.230	.114	.032	.219	.109	.031	.198	.100	.029	.177	.091	.026	.159	.082	.024	
8.0	.209	.102	.029	.199	.098	.028	.179	.089	.026	.161	.081	.023	.143	.073	.021	
9.0	.192	.093	.026	.182	.089	.025	.164	.081	.023	.147	.074	.021	.131	.066	.019	
10.0	.177	.085	.024	.168	.081	.023	.151	.074	.021	.135	.067	.019	.120	.060	.017	

ρ _{cc}	80%			70%			50%			30%			10%			0
ρ _w	50%	30%	10%	50%	30%	10%	50%	30%	10%	50%	30%	10%	50%	30%	10%	0
ρ _{fc}	20%			20%			20%			20%			20%			0
RCR	RCR:Room Cavity Ratio						Ceiling Cavity Exitance Coefficients(CCEC)									
0.0																
1.0	.480	.480	.480	.411	.411	.411	.280	.280	.280	.161	.161	.161	.051	.051	.051	
2.0	.497	.445	.398	.426	.382	.343	.291	.263	.237	.168	.152	.138	.054	.049	.045	
3.0	.493	.425	.368	.422	.366	.318	.289	.253	.222	.167	.147	.130	.054	.048	.042	
4.0	.484	.411	.352	.415	.354	.306	.285	.246	.214	.165	.144	.126	.053	.047	.041	
5.0	.475	.400	.343	.407	.346	.298	.280	.241	.210	.162	.141	.124	.052	.046	.041	
6.0	.465	.391	.337	.399	.338	.293	.275	.236	.207	.159	.139	.123	.051	.045	.040	
7.0	.456	.384	.332	.392	.332	.289	.270	.233	.205	.157	.137	.122	.051	.045	.040	
8.0	.447	.377	.329	.385	.327	.286	.266	.229	.203	.154	.135	.121	.050	.044	.040	
9.0	.439	.372	.326	.378	.323	.284	.261	.227	.202	.152	.134	.120	.049	.044	.040	
10.0	.432	.367	.324	.372	.319	.283	.258	.224	.201	.150	.132	.120	.049	.043	.040	
10.0	.425	.363	.322	.366	.315	.281	.254	.222	.200	.148	.131	.119	.048	.043	.040	

C Range: 0 - 360DEG
 C Interval: 22.5DEG
 Test Speed: HIGH
 Temperature:25.2℃
 Operators:Brooke
 Test Date:2022-05-06

γ Range: 0 - 180DEG
 γ Interval: 1.0DEG
 Test System:EVERFINE GO-R5000_V2 SYSTEM V2.00.459
 Humidity:55.0%
 Test Distance:2.900m [K=0.8817]
 Remarks:

UGR(Unified Glare Rating) Table

Test:U:110.1V I:0.1128A P:11.77W PF:0.9477 Freq:50.01Hz										
Lamp Flux:487.42x1 lm										
NAME: ALWL0070 3000K 35					TYPE:			WEIGHT:		
SPEC.:					DIM.:			SERIAL No.:		
MFR.: Alpha					SUR.:			Shielding Angle:		
ceiling/cavity	0.7	0.7	0.5	0.5	0.3	0.7	0.7	0.5	0.5	0.3
walls	0.5	0.3	0.5	0.3	0.3	0.5	0.3	0.5	0.3	0.3
working plane	0.2	0.2	0.2	0.2	0.2	0.2	0.2	0.2	0.2	0.2
Room dimensions	Viewed crosswise					Viewed endwise				
x = 2H y = 2H	5.5	6.9	6.2	7.7	8.7	-25.4	-23.9	-24.6	-23.1	-22.1
3H	15.9	17.2	16.6	18.0	19.1	-24.4	-23.1	-23.7	-22.3	-21.2
4H	20.4	21.7	21.2	22.6	23.6	-23.8	-22.5	-23.0	-21.7	-20.6
6H	24.6	25.8	25.4	26.7	27.8	-23.0	-21.8	-22.2	-21.0	-19.9
8H	26.6	27.8	27.5	28.7	29.8	-22.6	-21.4	-21.8	-20.6	-19.5
12H	28.7	29.9	29.6	30.8	31.9	-22.2	-21.1	-21.4	-20.2	-19.1
4H 2H	5.3	6.5	6.1	7.4	8.5	-5.6	-4.4	-4.8	-3.5	-2.4
3H	15.8	17.0	16.7	17.9	19.0	-5.9	-4.8	-5.1	-3.9	-2.8
4H	20.6	21.7	21.4	22.6	23.7	-6.1	-5.0	-5.3	-4.1	-3.0
6H	25.1	26.2	26.0	27.1	28.2	-6.3	-5.3	-5.4	-4.4	-3.2
8H	27.4	28.3	28.2	29.3	30.4	-6.4	-5.4	-5.5	-4.5	-3.3
12H	29.7	30.6	30.6	31.6	32.7	-6.5	-5.5	-5.6	-4.6	-3.4
8H 4H	20.4	21.4	21.3	22.3	23.5	7.0	8.0	7.9	8.9	10.1
6H	25.2	26.0	26.1	27.0	28.2	6.8	7.7	7.7	8.6	9.8
8H	27.6	28.4	28.5	29.4	30.6	6.8	7.6	7.7	8.5	9.7
12H	30.3	31.0	31.2	32.0	33.2	6.7	7.4	7.6	8.4	9.6
12H 4H	20.3	21.2	21.2	22.2	23.3	11.3	12.2	12.2	13.2	14.4
6H	25.1	25.9	26.0	26.8	28.0	11.4	12.2	12.3	13.1	14.3
8H	27.6	28.3	28.5	29.3	30.5	11.3	12.0	12.2	13.0	14.2
Variations with the observer position at spacings(CIE Pub.117):										
S = 1.0H	+ 0.2 / - 0.2					+ 0.2 / - 0.3				
1.5H	+ 0.4 / - 0.4					+ 0.5 / - 0.3				
2.0H	+ 0.6 / - 0.6					+ 1.6 / - 1.3				

CIE Pub.117, 487.4 lm Total Lamp Luminous Flux Corrected (8log(F/F0) = -2.5)
 Area: 0.72 m2

C Range: 0 - 360DEG
 C Interval: 22.5DEG
 Test Speed: HIGH
 Temperature:25.2℃
 Operators:Brooke
 Test Date:2022-05-06

γ Range: 0 - 180DEG
 γ Interval: 1.0DEG
 Test System:EVERFINE GO-R5000_V2 SYSTEM V2.00.459
 Humidity:55.0%
 Test Distance:2.900m [K=0.8817]
 Remarks:

UTILIZATION FACTORS TABLE

Test:U:110.1V I:0.1128A P:11.77W PF:0.9477 Freq:50.01Hz Lamp Flux:487.42x1 lm		
NAME: ALWL0070 3000K 35	TYPE:	WEIGHT:
SPEC.:	DIM.:	SERIAL No.:
MFR.: Alpha	SUR.:	Shielding Angle:

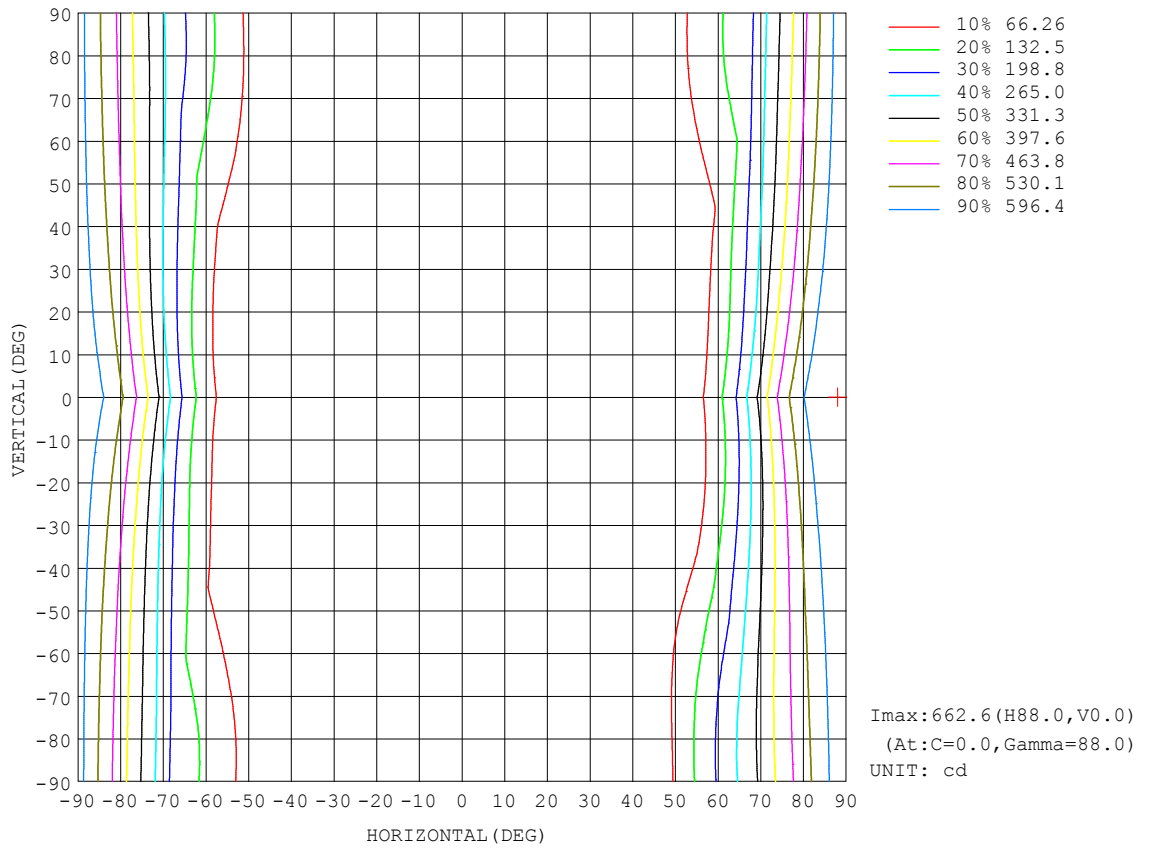
REFLECTANCE										
Ceiling	0.8	0.8	0.8	0.7	0.7	0.7	0.5	0.5	0.5	0
Walls	0.7	0.5	0.3	0.7	0.5	0.3	0.7	0.5	0.3	0
Working plane	0.2	0.2	0.2	0.2	0.2	0.2	0.2	0.2	0.2	0
ROOM INDEX	UTILIZATION FACTORS (PERCENT) $k(RI) \times RCR = 5$									
k = 0.60	31	17	9	30	16	8	28	15	8	1
0.80	37	21	11	36	20	11	32	19	10	1
1.00	42	25	13	40	24	13	36	25	12	2
1.25	48	30	17	45	28	16	40	25	15	3
1.50	53	34	21	49	32	20	43	29	18	4
2.00	60	42	28	56	39	26	49	35	24	8
2.50	66	48	34	61	45	32	53	39	29	11
3.00	70	53	39	65	50	37	56	43	33	14
4.00	76	61	48	71	57	45	61	50	40	20
5.00	81	67	55	75	62	52	65	54	45	24
ROOM INDEX	UF(total)									Direct
According to DIN EN 13032-2 2004			Suspended				SHRNOM = 1.25			

C Range: 0 - 360DEG
 C Interval: 22.5DEG
 Test Speed: HIGH
 Temperature: 25.2°C
 Operators: Brooke
 Test Date: 2022-05-06

γ Range: 0 - 180DEG
 γ Interval: 1.0DEG
 Test System: EVERFINE GO-R5000_V2 SYSTEM V2.00.459
 Humidity: 55.0%
 Test Distance: 2.900m [K=0.8817]
 Remarks:

ISOCANDELA DIAGRAM

Test:U:110.1V I:0.1128A P:11.77W PF:0.9477 Freq:50.01Hz Lamp Flux:487.42x1 lm		
NAME: ALWL0070 3000K 35	TYPE:	WEIGHT:
SPEC.:	DIM.:	SERIAL No.:
MFR.: Alpha	SUR.:	Shielding Angle:

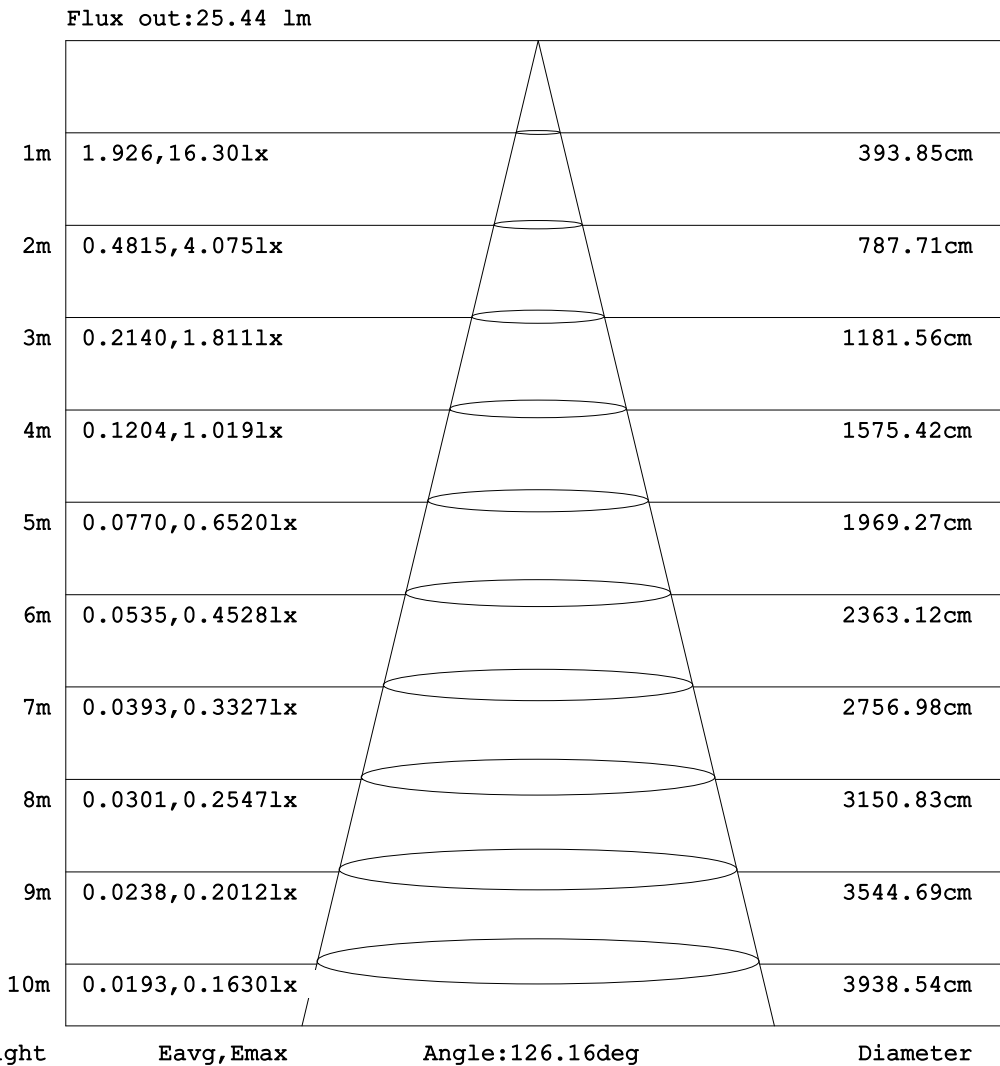


C Range: 0 - 360DEG
 C Interval: 22.5DEG
 Test Speed: HIGH
 Temperature:25.2°C
 Operators:Brooke
 Test Date:2022-05-06

γ Range: 0 - 180DEG
 γ Interval: 1.0DEG
 Test System:EVERFINE GO-R5000_V2 SYSTEM V2.00.459
 Humidity:55.0%
 Test Distance:2.900m [K=0.8817]
 Remarks:

AAI Figure

Test:U:110.1V I:0.1128A P:11.77W PF:0.9477 Freq:50.01Hz Lamp Flux:487.42x1 lm		
NAME: ALWL0070 3000K 35	TYPE:	WEIGHT:
SPEC.:	DIM.:	SERIAL No.:
MFR.: Alpha	SUR.:	Shielding Angle:



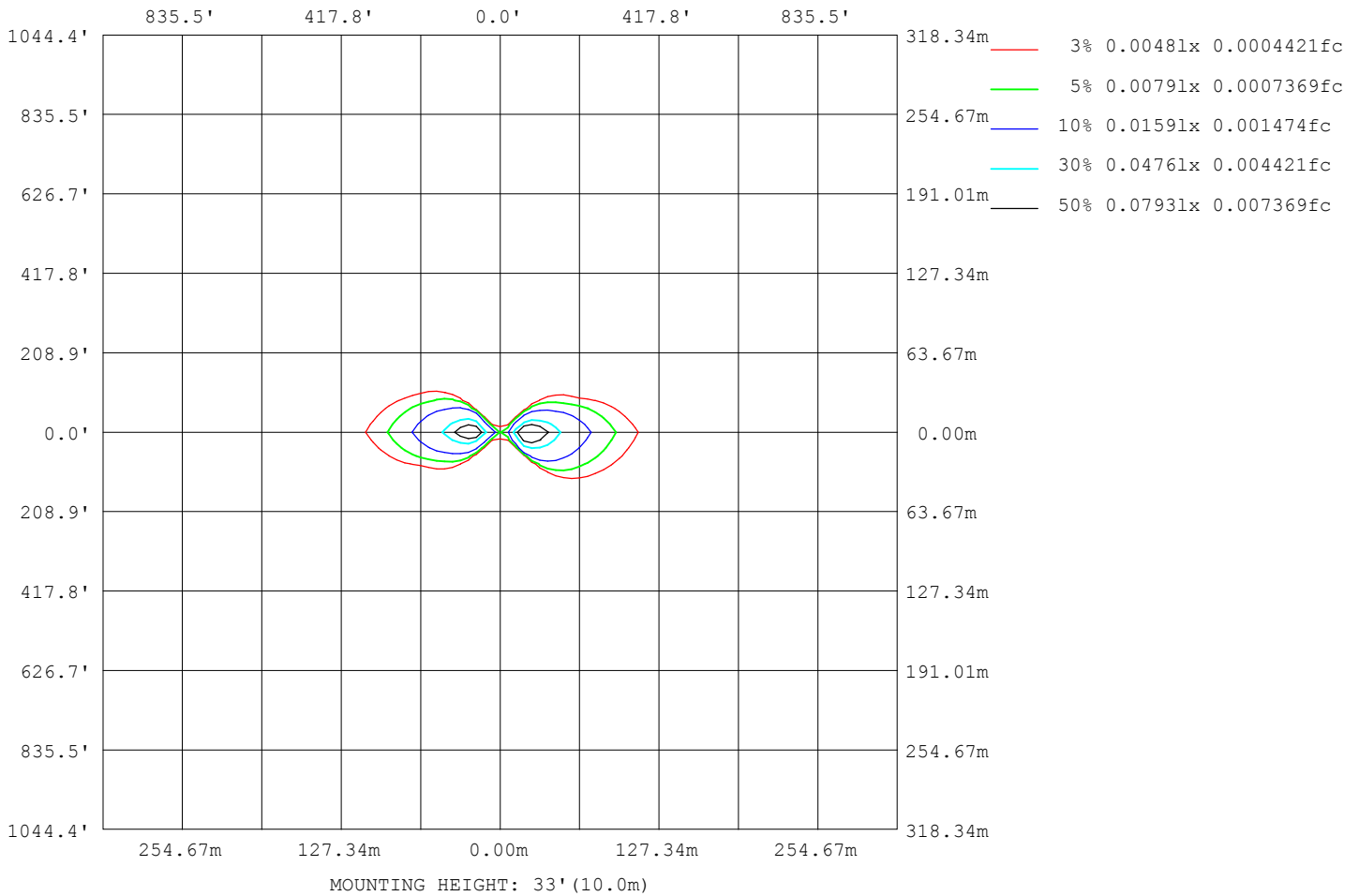
Note:The Curves indicate the illuminated area and the average illumination when the luminaire is at different distance.

C Range: 0 - 360DEG
 C Interval: 22.5DEG
 Test Speed: HIGH
 Temperature:25.2°C
 Operators:Brooke
 Test Date:2022-05-06

γ Range: 0 - 180DEG
 γ Interval: 1.0DEG
 Test System:EVERFINE GO-R5000_V2 SYSTEM V2.00.459
 Humidity:55.0%
 Test Distance:2.900m [K=0.8817]
 Remarks:

ISOLUX DIAGRAM

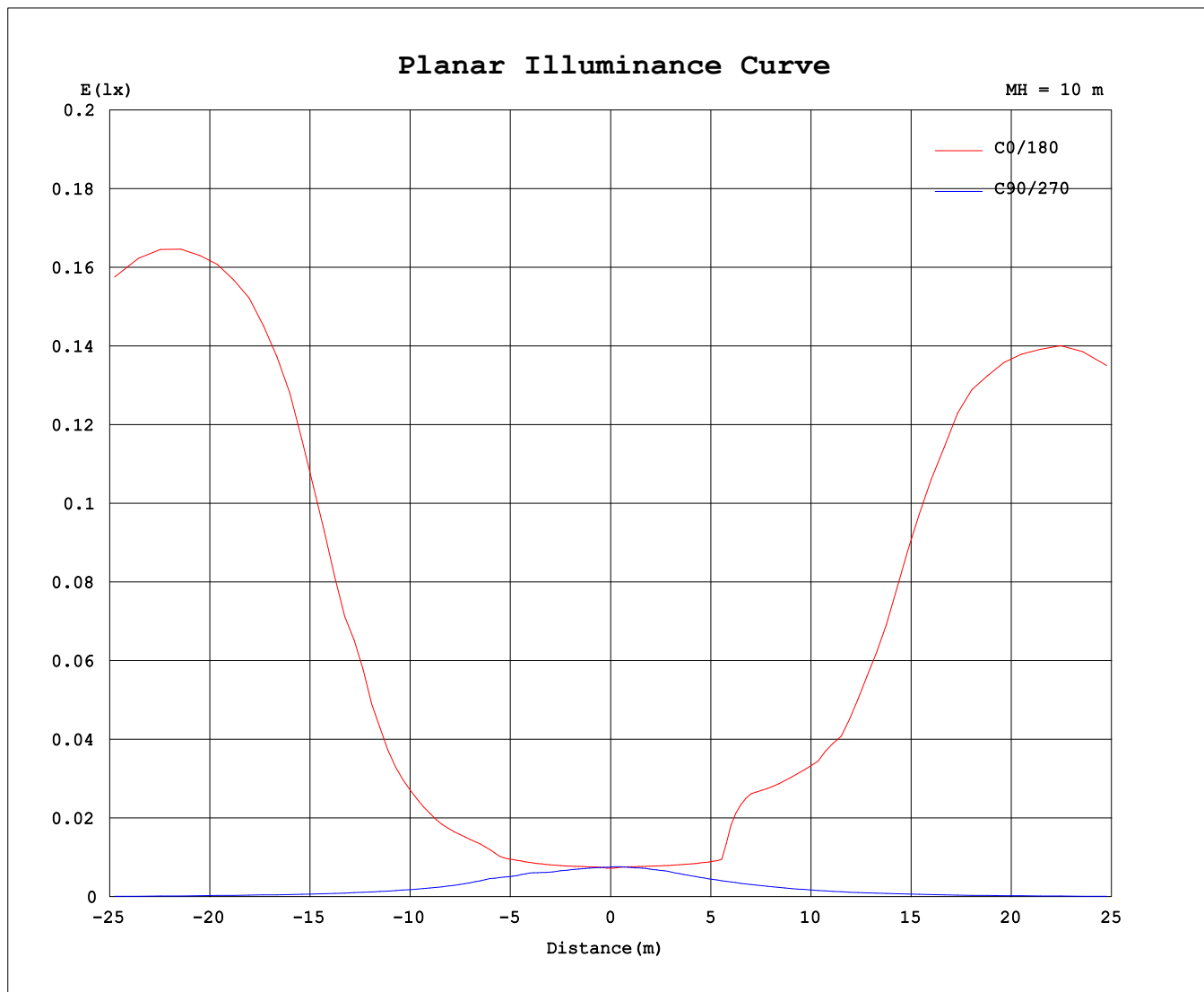
Test:U:110.1V I:0.1128A P:11.77W PF:0.9477 Freq:50.01Hz Lamp Flux:487.42x1 lm		
NAME: ALWL0070 3000K 35	TYPE:	WEIGHT:
SPEC.:	DIM.:	SERIAL No.:
MFR.: Alpha	SUR.:	Shielding Angle:



C Range: 0 - 360DEG
 C Interval: 22.5DEG
 Test Speed: HIGH
 Temperature:25.2°C
 Operators:Brooke
 Test Date:2022-05-06

γ Range: 0 - 180DEG
 γ Interval: 1.0DEG
 Test System:EVERFINE GO-R5000_V2 SYSTEM V2.00.459
 Humidity:55.0%
 Test Distance:2.900m [K=0.8817]
 Remarks:

Planar Illuminance Curve



C Range: 0 - 360DEG
C Interval: 22.5DEG
Test Speed: HIGH
Temperature: 25.2°C
Operators: Brooke
Test Date: 2022-05-06

γ Range: 0 - 180DEG
γ Interval: 1.0DEG
Test System: EVERFINE GO-R5000_V2 SYSTEM V2.00.459
Humidity: 55.0%
Test Distance: 2.900m [K=0.8817]
Remarks:

LUMINOUS DISTRIBUTION INTENSITY DATA

Test:U:110.1V I:0.1128A P:11.77W PF:0.9477 Freq:50.01Hz Lamp Flux:487.42x1 lm		
NAME: ALWL0070 3000K 35	TYPE:	WEIGHT:
SPEC.:	DIM.:	SERIAL No.:
MFR.: Alpha	SUR.:	Shielding Angle:

Table--1

UNIT: cd

C (DEG) γ (DEG)	0	22.5	45	67.5	90	112.5	135	157.5	180	202.5	225	247.5	270	292.5	315	337.5			
0	0.74	0.74	0.74	0.74	0.74	0.74	0.74	0.74	0.74	0.74	0.74	0.74	0.74	0.74	0.74	0.74			
5	0.78	0.76	0.75	0.74	0.72	0.74	0.76	0.77	0.78	0.79	0.78	0.76	0.74	0.75	0.77	0.78			
10	0.82	0.80	0.76	0.74	0.71	0.74	0.77	0.80	0.82	0.82	0.79	0.77	0.73	0.75	0.78	0.82			
15	0.90	0.86	0.79	0.74	0.70	0.74	0.79	0.85	0.89	0.86	0.80	0.75	0.71	0.74	0.80	0.87			
20	1.03	0.96	0.83	0.74	0.72	0.73	0.81	0.92	1.00	0.94	0.82	0.71	0.67	0.71	0.84	0.96			
25	1.26	1.11	0.88	0.75	0.71	0.75	0.85	1.04	1.18	1.07	0.84	0.68	0.63	0.68	0.85	1.11			
30	1.73	1.35	0.94	0.74	0.71	0.75	0.89	1.23	2.10	1.26	0.88	0.64	0.59	0.64	0.89	1.32			
35	2.68	2.12	1.02	0.70	0.63	0.72	0.96	3.34	4.80	3.35	0.93	0.61	0.56	0.61	0.94	1.92			
40	4.12	2.89	1.11	0.65	0.56	0.64	1.06	4.94	6.45	4.92	0.99	0.59	0.52	0.59	1.00	2.91			
45	7.73	4.25	1.34	0.62	0.51	0.60	1.31	6.06	9.49	6.30	1.29	0.57	0.48	0.57	1.19	4.16			
50	18.6	7.54	1.80	0.58	0.47	0.57	2.12	8.14	17.1	8.53	2.08	0.54	0.45	0.55	2.16	6.87			
55	49.5	16.7	2.27	0.55	0.44	0.53	2.71	12.8	41.7	13.4	2.80	0.51	0.41	0.52	2.71	12.9			
60	117	41.9	2.84	0.53	0.40	0.50	3.12	24.6	99.0	28.8	3.13	0.48	0.37	0.49	3.10	23.9			
65	219	93.6	3.58	0.49	0.36	0.46	3.33	44.4	185	61.4	3.34	0.44	0.34	0.46	3.35	44.7			
70	356	155	4.60	0.46	0.32	0.43	3.67	74.7	309	106	3.66	0.41	0.29	0.43	3.72	76.2			
75	495	215	5.78	0.44	0.28	0.41	4.07	110	436	150	4.05	0.37	0.25	0.41	4.18	114			
80	597	270	6.94	0.40	0.24	0.38	4.45	148	544	194	4.40	0.34	0.21	0.37	4.57	152			
85	657	301	7.80	0.34	0.18	0.32	4.65	175	610	223	4.54	0.27	0.15	0.30	4.75	179			
90	663	306	8.16	0.23	0.11	0.22	4.53	180	627	227	4.46	0.20	0.10	0.24	4.59	185			
95	619	282	8.04	0.13	0.13	0.12	4.31	160	588	205	4.20	0.05	0.06	0.07	4.14	167			
100	530	234	1.90	0.24	0.14	0.25	1.19	122	500	164	2.01	0.14	0.08	0.19	1.07	135			
105	73.7	35.0	0.18	0.25	0.15	0.26	0.21	9.78	181	2.01	0.26	0.14	0.11	0.23	0.23	1.29			
110	0.90	0.56	5.37	0.25	0.17	0.26	2.97	0.55	0.72	0.79	3.29	0.12	0.13	0.15	0.27	0.95			
115	0.98	59.4	4.47	0.25	0.18	0.26	2.60	28.1	0.82	37.5	2.99	0.18	0.14	0.16	2.05	31.7			
120	1.23	23.9	3.64	0.20	0.19	0.22	2.24	14.7	0.93	20.5	2.67	0.14	0.16	0.16	1.60	16.4			
125	0.71	9.01	2.65	0.19	0.21	0.13	1.58	8.93	0.63	10.2	2.05	0.10	0.18	0.17	1.11	7.28			
130	0.54	3.23	1.71	0.22	0.23	0.24	1.14	5.57	0.51	6.03	1.54	0.16	0.19	0.21	0.88	3.38			
135	0.15	1.21	0.60	0.23	0.25	0.24	0.48	3.22	0.09	3.24	0.71	0.14	0.21	0.16	0.51	1.34			
140	0.26	0.52	0.33	0.22	0.25	0.21	0.33	2.02	0.24	0.97	0.29	0.18	0.22	0.21	0.31	0.73			
145	0.19	0.14	0.28	0.21	0.25	0.17	0.36	0.31	0.13	0.17	0.26	0.15	0.22	0.17	0.27	0.29			
150	0.07	0.13	0.20	0.15	0.26	0.14	0.27	0.17	0.07	0.04	0.19	0.12	0.22	0.17	0.16	0.10			
155	0.08	0.14	0.15	0.14	0.26	0.14	0.19	0.17	0.10	0.08	0.18	0.08	0.21	0.24	0.10	0.23			
160	0.07	0.10	0.08	0.15	0.27	0.19	0.10	0.13	0.06	0.10	0.16	0.08	0.21	0.30	0.10	0.20			
165	0.04	0.05	0.09	0.18	0.28	0.20	0.08	0.06	0.04	0.04	0.07	0.06	0.20	0.32	0.25	0.08			
170	0.04	0.07	0.13	0.19	0.28	0.20	0.10	0.04	0.04	0.04	0.04	0.07	0.19	0.33	0.23	0.14			
175	0.09	0.10	0.10	0.17	0.26	0.15	0.06	0.08	0.06	0.06	0.08	0.07	0.10	0.24	0.18	0.10			
180	0.14	0.14	0.15	0.16	0.17	0.13	0.14	0.14	0.15	0.14	0.14	0.14	0.16	0.19	0.14	0.14			

C Range: 0 - 360DEG
 C Interval: 22.5DEG
 Test Speed: HIGH
 Temperature:25.2℃
 Operators:Brooke
 Test Date:2022-05-06

γ Range: 0 - 180DEG
 γ Interval: 1.0DEG
 Test System:EVERFINE GO-R5000_V2 SYSTEM V2.00.459
 Humidity:55.0%
 Test Distance:2.900m [K=0.8817]
 Remarks: