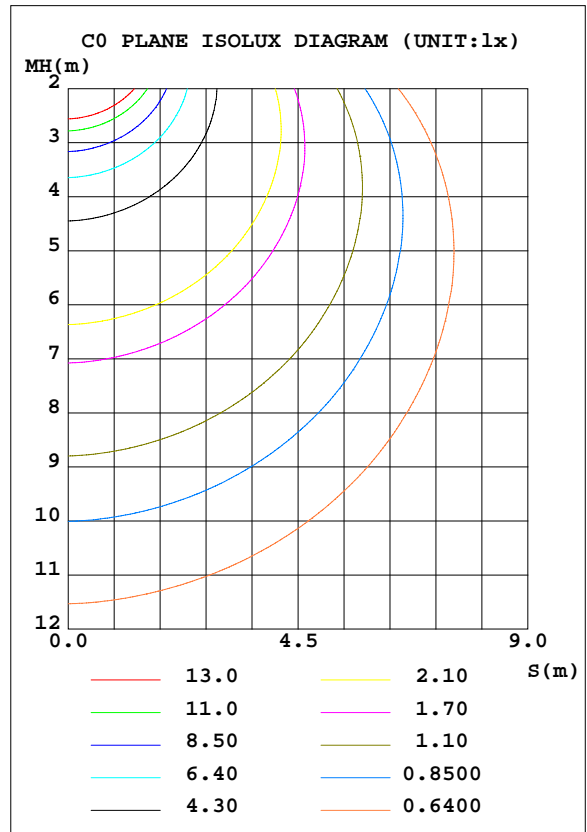
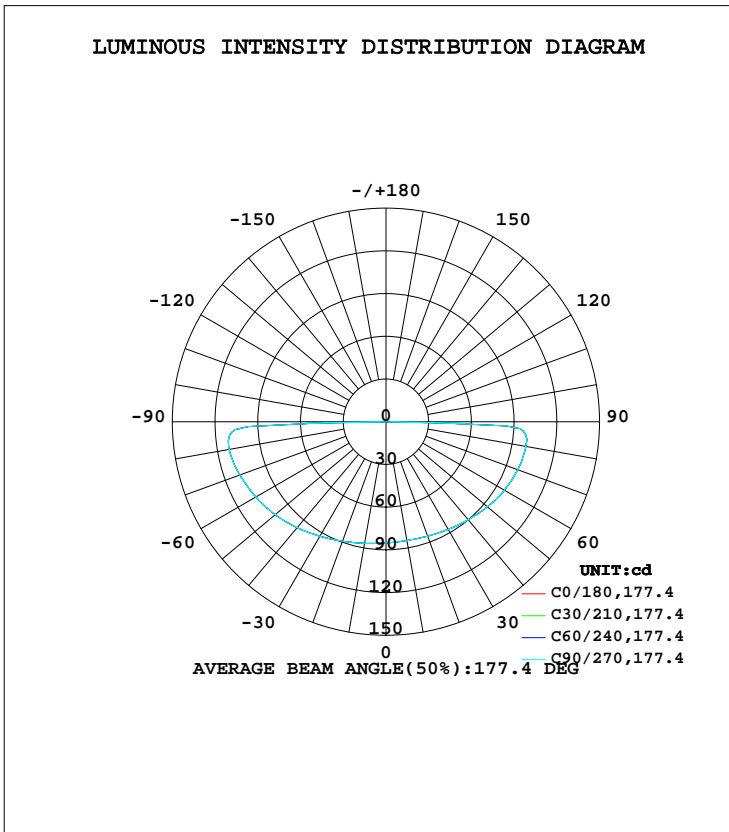


LUMINAIRE PHOTOMETRIC TEST REPORT

Test:U:220.34V I:0.1749A P:38.155W PF:0.9901 Freq:51.08Hz Lamp Flux:606.563x1 lm		
NAME:	TYPE:	WEIGHT:
SPEC.:600*1500	DIM.:	SERIAL No.:
MFR.: Ecoaly Limited	SUR.:	Shielding Angle:

DATA OF LAMP		PHOTOMETRIC DATA Eff: 15.90 lm/W			
MODEL		I _{max} (cd)	111.9	S/MH(C0/180)	1.72
NOMINAL POWER(W)	38W	LOR(%)	100.0	S/MH(C90/270)	1.72
RATED VOLTAGE(V)	220-240	TOTAL FLUX(lm)	606.56	η UP, DN(C0-180)	0.0,47.7
NOMINAL FLUX(lm)	606.563	CIE CLASS	DIRECT	η UP, DN(C180-360)	0.0,52.3
LAMPS INSIDE	1	η up(%)	0.0	CIBSE SHR NOM	2.00
TEST VOLTAGE(V)	225	η down(%)	100.0	CIBSE SHR MAX	2.00



C Range: 0 - 180DEG
 C Interval: 30.0DEG
 Test Speed: HIGH
 Temperature:25.3DEG
 Operators:
 Test Date:2022-04-18

γ Range: 0 - 90DEG
 γ Interval: 1.0DEG
 Test System:EVERFINE GO-2000B_V1 SYSTEM V2.0.406.10
 Humidity:65.0%
 Test Distance:7.910m [K=1.0000]
 Remarks:

ZONAL FLUX DIAGRAM

ZONAL FLUX DIAGRAM:

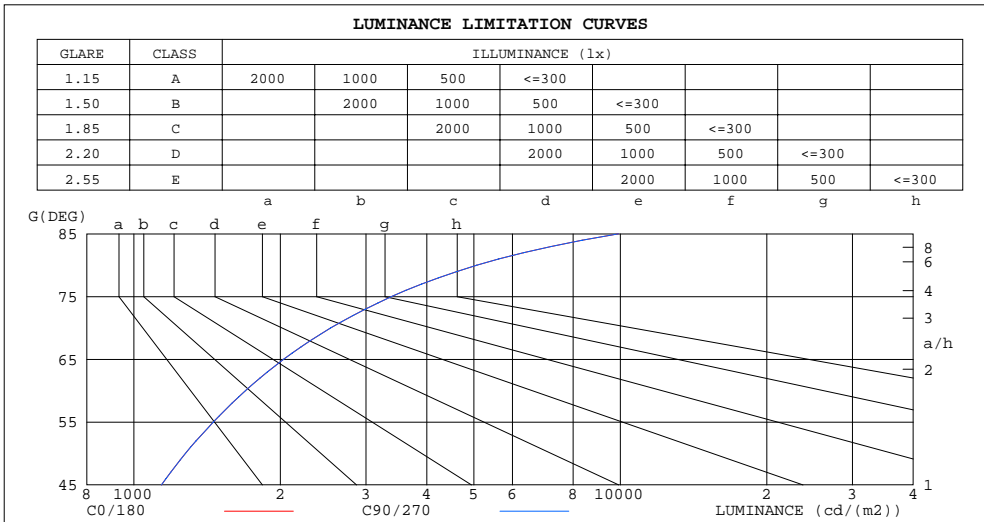
γ	C0	C45	C90	C135	C180	C225	C270	C315	γ	Φ zone	Φ total	Φ lum,lamp
10	84.71	84.71	84.71	84.71	86.65	86.65	86.65	86.65	0- 10	8.153	8.153	1.34,1.34
20	85.50	85.50	85.50	85.50	89.25	89.25	89.25	89.25	10- 20	24.53	32.68	5.39,5.39
30	87.33	87.33	87.33	87.33	92.80	92.80	92.80	92.80	20- 30	41.08	73.76	12.2,12.2
40	89.82	89.82	89.82	89.82	97.16	97.16	97.16	97.16	30- 40	57.68	131.4	21.7,21.7
50	92.98	92.98	92.98	92.98	101.6	101.6	101.6	101.6	40- 50	73.92	205.4	33.9,33.9
60	96.08	96.08	96.08	96.08	105.6	105.6	105.6	105.6	50- 60	88.96	294.3	48.5,48.5
70	98.41	98.41	98.41	98.41	109.2	109.2	109.2	109.2	60- 70	101.6	395.9	65.3,65.3
80	99.73	99.73	99.73	99.73	111.9	111.9	111.9	111.9	70- 80	111.1	507.0	83.6,83.6
90	4.148	4.148	4.148	4.148	4.465	4.465	4.465	4.465	80- 90	99.55	606.6	100,100
100									90-100			
110									100-110			
120									110-120			
130									120-130			
140									130-140			
150									140-150			
160									150-160			
170									160-170			
180									170-180			
DEG	LUMINOUS INTENSITY:cd									UNIT:lm		

C Range: 0 - 180DEG
 C Interval: 30.0DEG
 Test Speed: HIGH
 Temperature:25.3DEG
 Operators:
 Test Date:2022-04-18

γ Range: 0 - 90DEG
 γ Interval: 1.0DEG
 Test System:EVERFINE GO-2000B_V1 SYSTEM V2.0.406.10
 Humidity:65.0%
 Test Distance:7.910m [K=1.0000]
 Remarks:

LUMINANCE LIMITATION CURVES

Test:U:220.34V I:0.1749A P:38.155W PF:0.9901 Freq:51.08Hz Lamp Flux:606.563x1 lm		
NAME:	TYPE:	WEIGHT:
SPEC.:600*1500	DIM.:	SERIAL No.:
MFR.: Ecoaly Limited	SUR.:	Shielding Angle:



LUMINANCE cd/(m2)		
G (DEG)	C0/180	C90/270
85	9914	9914
80	5066	5066
75	3385	3385
70	2538	2538
65	2032	2032
60	1695	1695
55	1456	1456
50	1276	1276
45	1140	1140

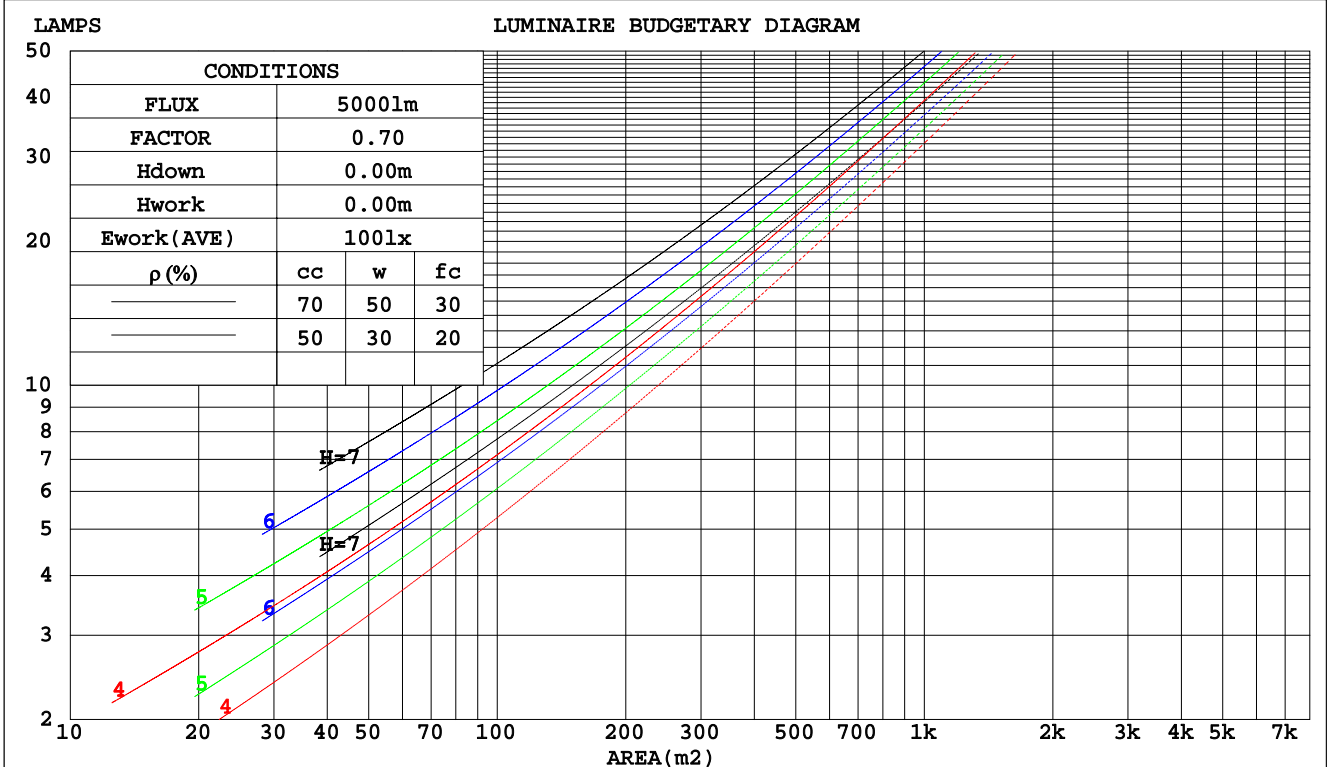
C Range: 0 - 180DEG
 C Interval: 30.0DEG
 Test Speed: HIGH
 Temperature: 25.3DEG
 Operators:
 Test Date: 2022-04-18

γ Range: 0 - 90DEG
 γ Interval: 1.0DEG
 Test System: EVERFINE GO-2000B_V1 SYSTEM V2.0.406.10
 Humidity: 65.0%
 Test Distance: 7.910m [K=1.0000]
 Remarks:

CU AND LUMINAIRE BUDGETARY ESTIMATE DIAGRAM

Test:U:220.34V I:0.1749A P:38.155W PF:0.9901 Freq:51.08Hz Lamp Flux:606.563x1 lm		
NAME:	TYPE:	WEIGHT:
SPEC.:600*1500	DIM.:	SERIAL No.:
MFR.: Ecoaly Limited	SUR.:	Shielding Angle:

pcc	80%			70%			50%			30%			10%			0
	50%	30%	10%	50%	30%	10%	50%	30%	10%	50%	30%	10%	50%	30%	10%	0
pw																0
pfc	20%			20%			20%			20%			20%			0
RCR	RCR:Room Cavity Ratio Coefficients of Utilization(CU)															
0.0	1.19	1.19	1.19	1.16	1.16	1.16	1.11	1.11	1.11	1.06	1.06	1.06	1.02	1.02	1.02	.00
1.0	.92	.85	.78	.90	.83	.77	.85	.79	.74	.81	.76	.72	.77	.73	.69	.67
2.0	.76	.66	.57	.74	.64	.56	.70	.62	.55	.66	.59	.53	.63	.57	.52	.49
3.0	.64	.53	.44	.62	.52	.43	.59	.50	.42	.56	.48	.42	.53	.46	.41	.38
4.0	.55	.44	.35	.54	.43	.35	.51	.42	.34	.48	.40	.34	.46	.39	.33	.30
5.0	.48	.37	.29	.47	.37	.29	.45	.35	.28	.43	.34	.28	.41	.33	.27	.25
6.0	.43	.32	.24	.42	.32	.24	.40	.31	.24	.38	.30	.24	.36	.29	.23	.21
7.0	.39	.28	.21	.38	.28	.21	.36	.27	.21	.34	.26	.20	.33	.26	.20	.18
8.0	.35	.25	.18	.34	.25	.18	.33	.24	.18	.31	.23	.18	.30	.23	.18	.15
9.0	.32	.22	.16	.31	.22	.16	.30	.22	.16	.29	.21	.16	.28	.21	.16	.14
10.0	.29	.20	.14	.29	.20	.14	.28	.20	.14	.27	.19	.14	.26	.19	.14	.12



C Range: 0 - 180DEG
 C Interval: 30.0DEG
 Test Speed: HIGH
 Temperature:25.3DEG
 Operators:
 Test Date:2022-04-18

γ Range: 0 - 90DEG
 γ Interval: 1.0DEG
 Test System:EVERFINE GO-2000B_V1 SYSTEM V2.0.406.10
 Humidity:65.0%
 Test Distance:7.910m [K=1.0000]
 Remarks:

WEC AND CCEC

Test:U:220.34V I:0.1749A P:38.155W PF:0.9901 Freq:51.08Hz Lamp Flux:606.563x1 lm		
NAME:	TYPE:	WEIGHT:
SPEC.:600*1500	DIM.:	SERIAL No.:
MFR.: Ecoaly Limited	SUR.:	Shielding Angle:

ρcc	80%			70%			50%			30%			10%			0
ρw	50%	30%	10%	50%	30%	10%	50%	30%	10%	50%	30%	10%	50%	30%	10%	0
ρfc	20%			20%			20%			20%			20%			0
RCR	RCR:Room Cavity Ratio						Wall Exitance Coefficients(WEC)									
0.0																
1.0	.533	.303	.096	.526	.300	.095	.511	.293	.094	.498	.287	.092	.486	.282	.091	
2.0	.432	.237	.073	.425	.234	.072	.412	.229	.071	.400	.225	.070	.389	.220	.069	
3.0	.368	.196	.059	.362	.194	.058	.350	.190	.058	.340	.186	.057	.330	.183	.057	
4.0	.322	.167	.049	.316	.165	.049	.306	.162	.048	.296	.159	.048	.288	.156	.048	
5.0	.286	.146	.042	.281	.144	.042	.272	.142	.042	.263	.139	.041	.256	.137	.041	
6.0	.257	.129	.037	.253	.128	.037	.245	.125	.037	.237	.123	.036	.230	.121	.036	
7.0	.234	.116	.033	.230	.115	.033	.223	.113	.032	.216	.111	.032	.210	.109	.032	
8.0	.214	.105	.029	.211	.104	.029	.205	.102	.029	.199	.101	.029	.193	.099	.029	
9.0	.198	.096	.027	.195	.095	.027	.189	.094	.027	.184	.092	.026	.179	.091	.026	
10.0	.184	.088	.024	.181	.087	.024	.176	.086	.024	.171	.085	.024	.167	.084	.024	

ρcc	80%			70%			50%			30%			10%			0
ρw	50%	30%	10%	50%	30%	10%	50%	30%	10%	50%	30%	10%	50%	30%	10%	0
ρfc	20%			20%			20%			20%			20%			0
RCR	RCR:Room Cavity Ratio						Ceiling Cavity Exitance Coefficients(CCEC)									
0.0	.190	.190	.190	.163	.163	.163	.111	.111	.111	.064	.064	.064	.020	.020	.020	
1.0	.196	.154	.117	.168	.132	.100	.115	.091	.069	.066	.053	.040	.021	.017	.013	
2.0	.191	.131	.081	.164	.113	.070	.112	.078	.049	.065	.045	.029	.021	.015	.009	
3.0	.183	.115	.060	.157	.099	.052	.108	.069	.037	.062	.040	.022	.020	.013	.007	
4.0	.175	.103	.048	.150	.089	.041	.103	.062	.029	.060	.036	.017	.019	.012	.006	
5.0	.166	.093	.039	.142	.080	.034	.098	.056	.024	.057	.033	.014	.018	.011	.005	
6.0	.157	.085	.033	.135	.073	.029	.093	.051	.020	.054	.030	.012	.017	.010	.004	
7.0	.149	.078	.028	.128	.068	.025	.088	.047	.018	.051	.028	.010	.017	.009	.003	
8.0	.141	.072	.025	.121	.063	.022	.084	.044	.015	.049	.026	.009	.016	.008	.003	
9.0	.133	.067	.022	.115	.058	.020	.080	.041	.014	.046	.024	.008	.015	.008	.003	
10.0	.127	.063	.020	.109	.054	.018	.076	.038	.013	.044	.023	.007	.014	.007	.002	

C Range: 0 - 180DEG
 C Interval: 30.0DEG
 Test Speed: HIGH
 Temperature:25.3DEG
 Operators:
 Test Date:2022-04-18

γ Range: 0 - 90DEG
 γ Interval: 1.0DEG
 Test System:EVERFINE GO-2000B_V1 SYSTEM V2.0.406.10
 Humidity:65.0%
 Test Distance:7.910m [K=1.0000]
 Remarks:

UGR(Unified Glare Rating) Table

Test:U:220.34V I:0.1749A P:38.155W PF:0.9901 Freq:51.08Hz Lamp Flux:606.563x1 lm										
NAME:			TYPE:			WEIGHT:				
SPEC.:600*1500			DIM.:			SERIAL No.:				
MFR.: Ecoaly Limited			SUR.:			Shielding Angle:				
ceiling/cavity	0.7	0.7	0.5	0.5	0.3	0.7	0.7	0.5	0.5	0.3
walls	0.5	0.3	0.5	0.3	0.3	0.5	0.3	0.5	0.3	0.3
working plane	0.2	0.2	0.2	0.2	0.2	0.2	0.2	0.2	0.2	0.2
Room dimensions	Viewed crosswise					Viewed endwise				
x = 2H y = 2H	14.1	16.0	14.4	16.2	16.4	14.1	16.0	14.4	16.2	16.4
3H	17.5	19.2	17.8	19.5	19.8	17.5	19.2	17.8	19.5	19.8
4H	19.4	21.1	19.7	21.4	21.7	19.4	21.1	19.7	21.4	21.7
6H	21.5	23.1	21.9	23.4	23.7	21.5	23.1	21.9	23.4	23.7
8H	22.7	24.3	23.0	24.6	24.9	22.7	24.3	23.0	24.6	24.9
12H	24.0	25.6	24.4	25.9	26.2	24.0	25.6	24.4	25.9	26.2
4H 2H	15.2	17.0	15.6	17.2	17.5	15.2	17.0	15.6	17.2	17.5
3H	18.7	20.3	19.1	20.6	21.0	18.7	20.3	19.1	20.6	21.0
4H	20.8	22.3	21.2	22.6	23.0	20.8	22.3	21.2	22.6	23.0
6H	23.1	24.4	23.5	24.8	25.2	23.1	24.4	23.5	24.8	25.2
8H	24.4	25.6	24.8	26.0	26.4	24.4	25.6	24.8	26.0	26.4
12H	25.8	27.0	26.2	27.4	27.8	25.8	27.0	26.2	27.4	27.8
8H 4H	21.6	22.9	22.1	23.3	23.7	21.6	22.9	22.1	23.3	23.7
6H	24.2	25.3	24.6	25.7	26.2	24.2	25.3	24.6	25.7	26.2
8H	25.7	26.7	26.1	27.1	27.6	25.7	26.7	26.1	27.1	27.6
12H	27.3	28.2	27.8	28.7	29.2	27.3	28.2	27.8	28.7	29.2
12H 4H	21.9	23.1	22.3	23.5	23.9	21.9	23.1	22.3	23.5	23.9
6H	24.6	25.6	25.0	26.0	26.5	24.6	25.6	25.0	26.0	26.5
8H	26.1	27.1	26.6	27.5	28.0	26.1	27.1	26.6	27.5	28.0
Variations with the observer position at spacings:										
S = 1.0H	+ 0.1 / - 0.1					+ 0.1 / - 0.1				
1.5H	+ 0.2 / - 0.3					+ 0.2 / - 0.3				
2.0H	+ 0.3 / - 0.4					+ 0.3 / - 0.4				

CIE Pub.117, 606.6 lm Total Lamp Luminous Flux Corrected (8log(F/F0) = -1.7)

C Range: 0 - 180DEG
 C Interval: 30.0DEG
 Test Speed: HIGH
 Temperature:25.3DEG
 Operators:
 Test Date:2022-04-18

γ Range: 0 - 90DEG
 γ Interval: 1.0DEG
 Test System:EVERFINE GO-2000B_V1 SYSTEM V2.0.406.10
 Humidity:65.0%
 Test Distance:7.910m [K=1.0000]
 Remarks:

UTILIZATION FACTORS TABLE

Test:U:220.34V I:0.1749A P:38.155W PF:0.9901 Freq:51.08Hz Lamp Flux:606.563x1 lm		
NAME:	TYPE:	WEIGHT:
SPEC.:600*1500	DIM.:	SERIAL No.:
MFR.: Ecoaly Limited	SUR.:	Shielding Angle:

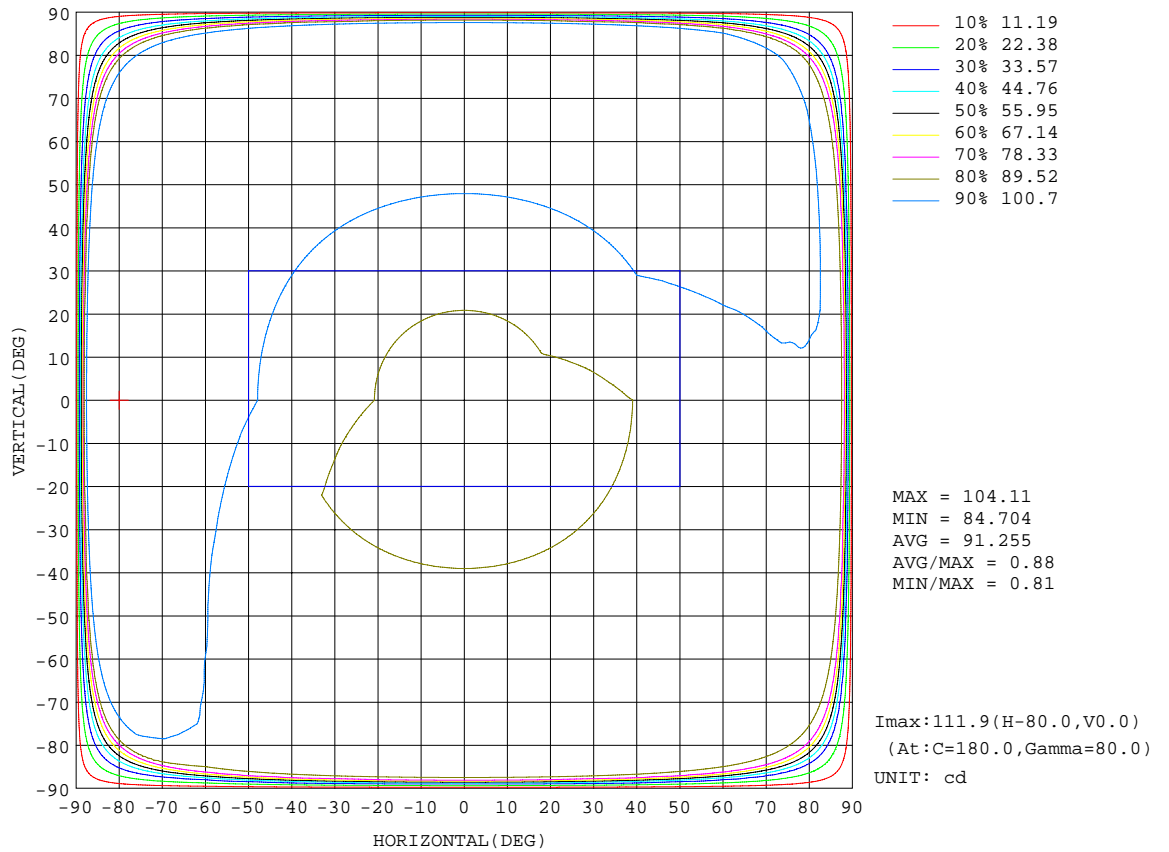
REFLECTANCE										
Ceiling	0.8	0.8	0.8	0.7	0.7	0.7	0.5	0.5	0.5	0
Walls	0.7	0.5	0.3	0.7	0.5	0.3	0.7	0.5	0.3	0
Working plane	0.2	0.2	0.2	0.2	0.2	0.2	0.2	0.2	0.2	0
ROOM INDEX	UTILIZATION FACTORS(PERCENT) $k(RI) \times RCR = 5$									
k = 0.60	45	32	23	45	31	23	43	31	23	16
0.80	54	40	30	53	39	30	51	38	30	21
1.00	61	47	37	60	46	37	57	49	36	27
1.25	68	54	44	67	53	44	63	52	43	33
1.50	74	60	50	72	59	49	68	57	48	38
2.00	82	69	59	79	67	58	75	65	57	46
2.50	87	75	65	84	73	64	79	70	62	52
3.00	91	80	71	88	78	70	83	75	68	57
4.00	96	87	79	93	85	77	88	81	75	64
5.00	100	91	84	97	89	83	92	85	80	68
ROOM INDEX	UF(total)									Direct
According to DIN EN 13032-2 2004			Suspended				SHRNOM = 1.25			

C Range: 0 - 180DEG
 C Interval: 30.0DEG
 Test Speed: HIGH
 Temperature:25.3DEG
 Operators:
 Test Date:2022-04-18

γ Range: 0 - 90DEG
 γ Interval: 1.0DEG
 Test System:EVERFINE GO-2000B_V1 SYSTEM V2.0.406.10
 Humidity:65.0%
 Test Distance:7.910m [K=1.0000]
 Remarks:

ISOCANDELA DIAGRAM

Test:U:220.34V I:0.1749A P:38.155W PF:0.9901 Freq:51.08Hz Lamp Flux:606.563x1 lm		
NAME:	TYPE:	WEIGHT:
SPEC.:600*1500	DIM.:	SERIAL No.:
MFR.: Ecoaly Limited	SUR.:	Shielding Angle:

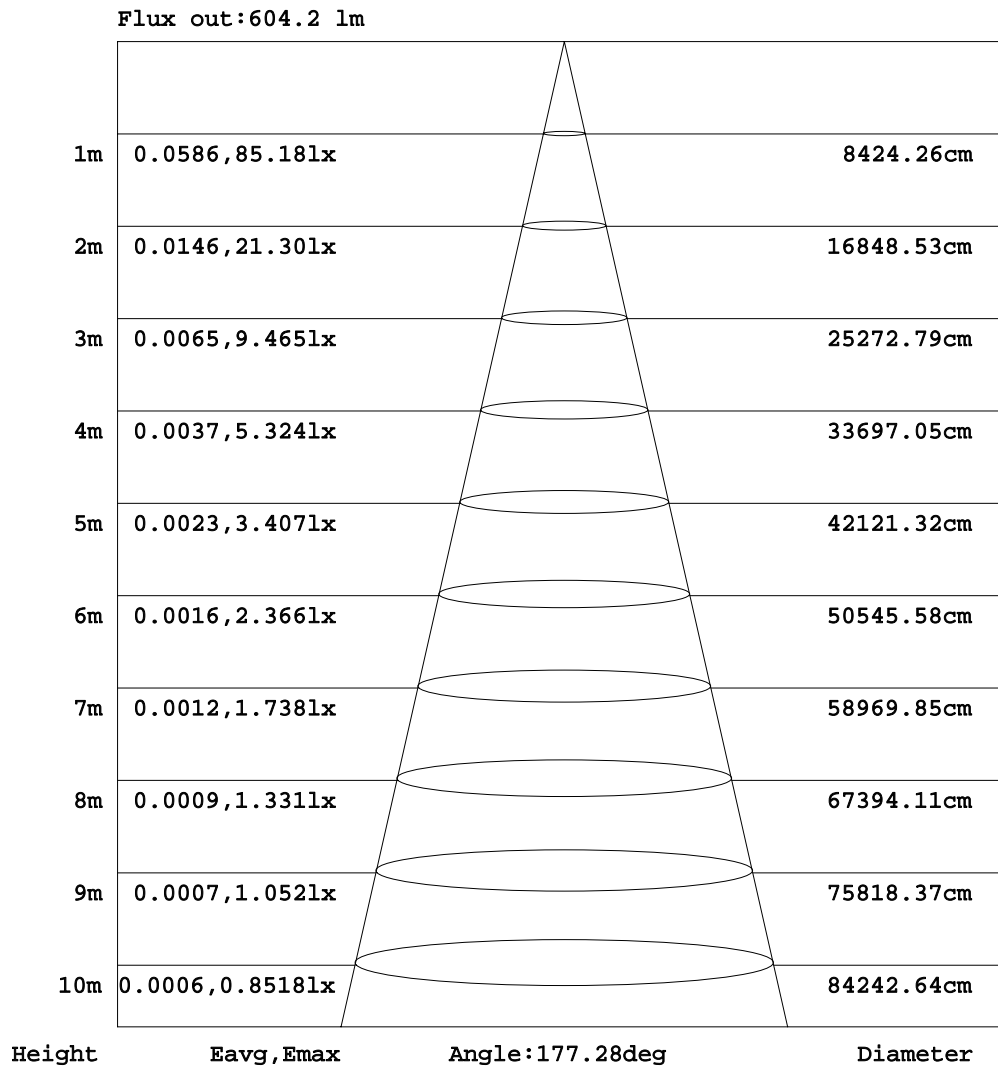


C Range: 0 - 180DEG
 C Interval: 30.0DEG
 Test Speed: HIGH
 Temperature:25.3DEG
 Operators:
 Test Date:2022-04-18

γ Range: 0 - 90DEG
 γ Interval: 1.0DEG
 Test System:EVERFINE GO-2000B_V1 SYSTEM V2.0.406.10
 Humidity:65.0%
 Test Distance:7.910m [K=1.0000]
 Remarks:

AAI Figure

Test:U:220.34V I:0.1749A P:38.155W PF:0.9901 Freq:51.08Hz Lamp Flux:606.563x1 lm		
NAME:	TYPE:	WEIGHT:
SPEC.:600*1500	DIM.:	SERIAL No.:
MFR.: Ecoaly Limited	SUR.:	Shielding Angle:



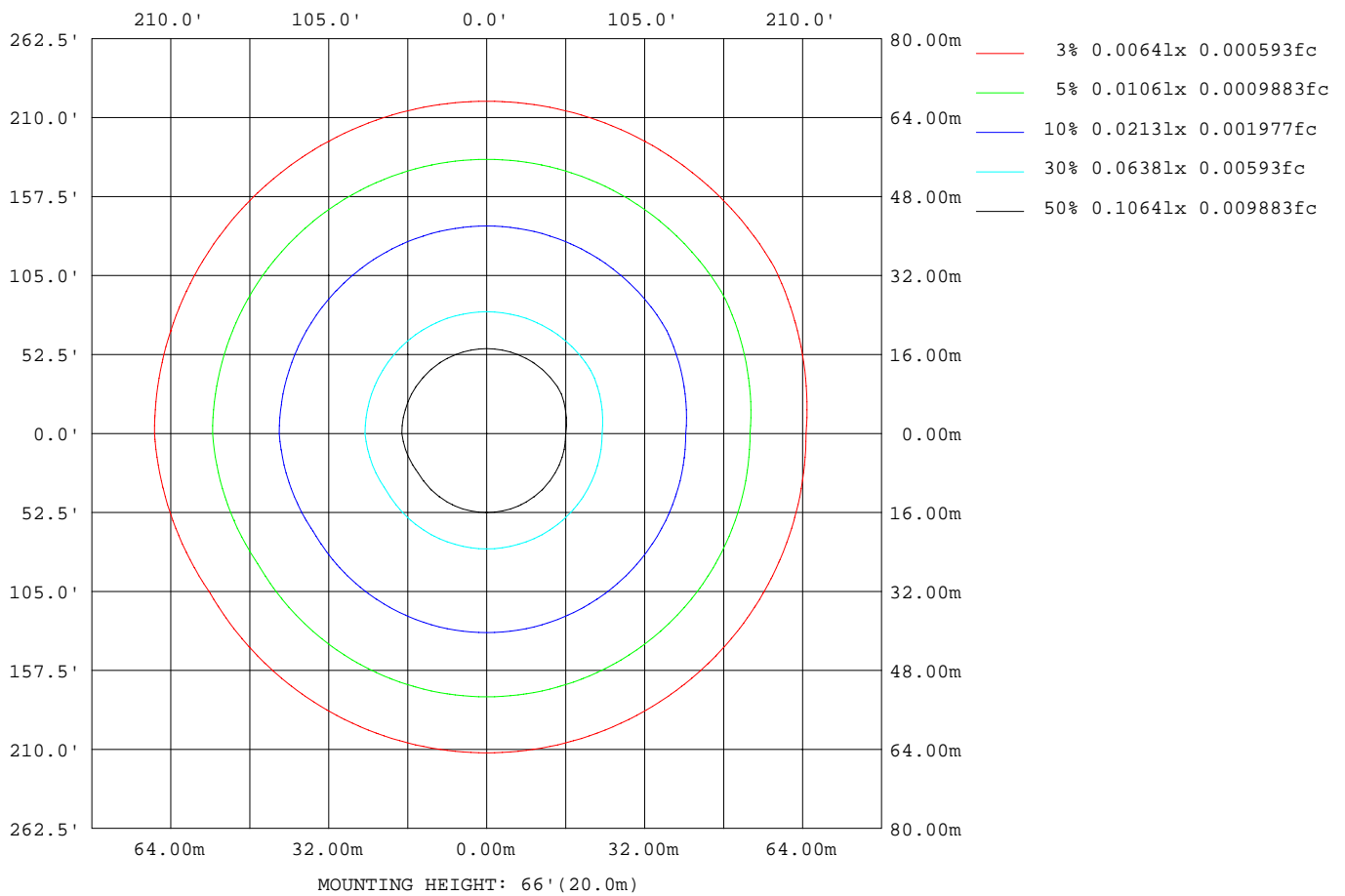
Note:The Curves indicate the illuminated area and the average illumination when the luminaire is at different distance.

C Range: 0 - 180DEG
 C Interval: 30.0DEG
 Test Speed: HIGH
 Temperature:25.3DEG
 Operators:
 Test Date:2022-04-18

γ Range: 0 - 90DEG
 γ Interval: 1.0DEG
 Test System:EVERFINE GO-2000B_V1 SYSTEM V2.0.406.10
 Humidity:65.0%
 Test Distance:7.910m [K=1.0000]
 Remarks:

ISOLUX DIAGRAM

Test:U:220.34V I:0.1749A P:38.155W PF:0.9901 Freq:51.08Hz Lamp Flux:606.563x1 lm		
NAME:	TYPE:	WEIGHT:
SPEC.:600*1500	DIM.:	SERIAL No.:
MFR.: Ecoaly Limited	SUR.:	Shielding Angle:



C Range: 0 - 180DEG
 C Interval: 30.0DEG
 Test Speed: HIGH
 Temperature:25.3DEG
 Operators:
 Test Date:2022-04-18

γ Range: 0 - 90DEG
 γ Interval: 1.0DEG
 Test System:EVERFINE GO-2000B_V1 SYSTEM V2.0.406.10
 Humidity:65.0%
 Test Distance:7.910m [K=1.0000]
 Remarks:

LED Avg.L Report

Test:U:220.34V I:0.1749A P:38.155W PF:0.9901 Freq:51.08Hz Lamp Flux:606.563x1 lm		
NAME:	TYPE:	WEIGHT:
SPEC.:600*1500	DIM.:	SERIAL No.:
MFR.: Ecoaly Limited	SUR.:	Shielding Angle:

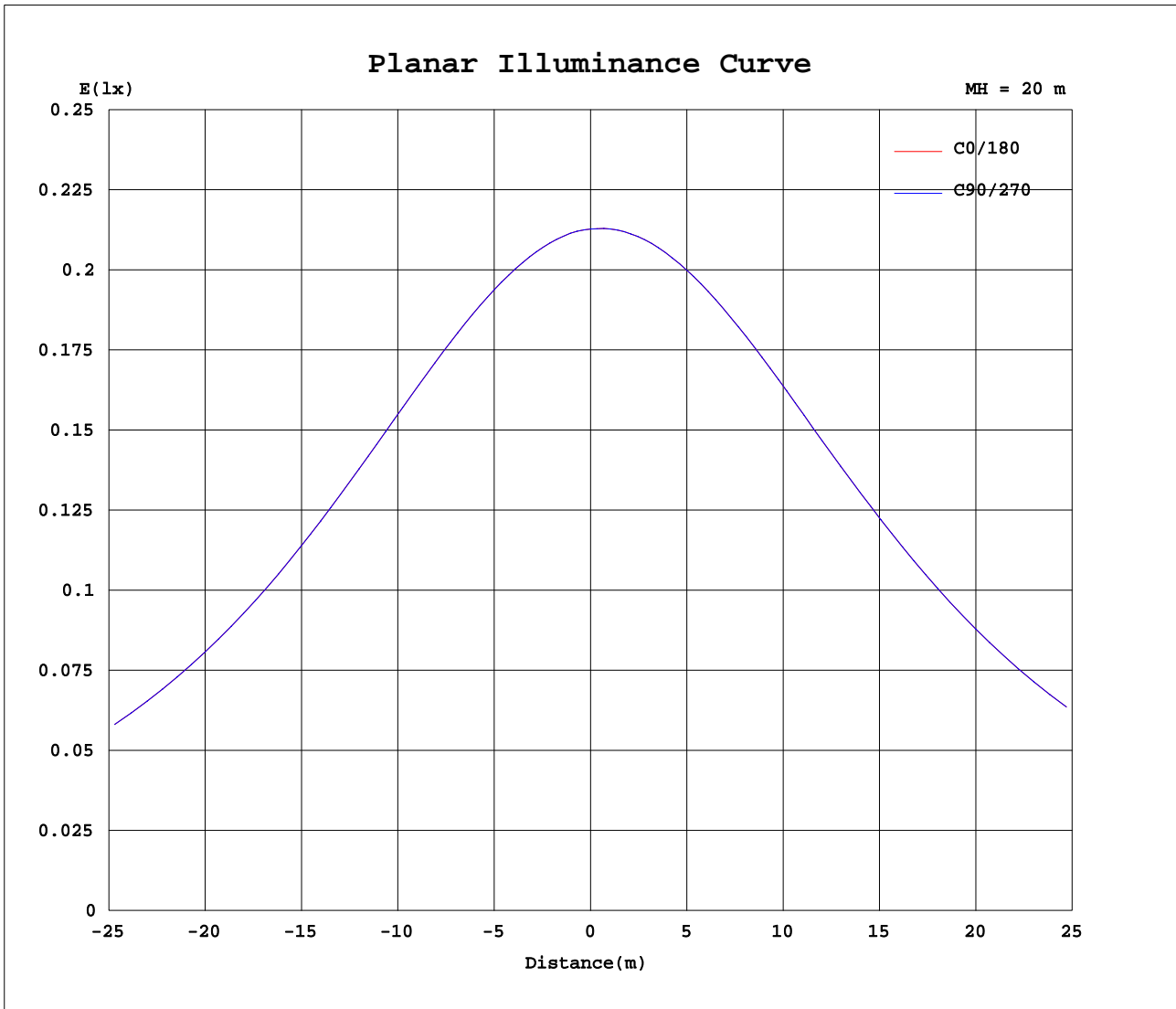
AvgL	cd/m2
L_0~180(65)av	2135
L_0~180(75)av	3583
L_0~180(85)av	10536
L_90~270(65)av	2135
L_90~270(75)av	3583
L_90~270(85)av	10536
L_45(65)av	2135
L_45(75)av	3583
L_45(85)av	10536

Standard: GB/T 29293-2012

C Range: 0 - 180DEG
 C Interval: 30.0DEG
 Test Speed: HIGH
 Temperature:25.3DEG
 Operators:
 Test Date:2022-04-18

γ Range: 0 - 90DEG
 γ Interval: 1.0DEG
 Test System:EVERFINE GO-2000B_V1 SYSTEM V2.0.406.10
 Humidity:65.0%
 Test Distance:7.910m [K=1.0000]
 Remarks:

Planar Illuminance Curve



C Range: 0 - 180DEG
 C Interval: 30.0DEG
 Test Speed: HIGH
 Temperature: 25.3DEG
 Operators:
 Test Date: 2022-04-18

γ Range: 0 - 90DEG
 γ Interval: 1.0DEG
 Test System: EVERFINE GO-2000B_V1 SYSTEM V2.0.406.10
 Humidity: 65.0%
 Test Distance: 7.910m [K=1.0000]
 Remarks:

