

Lightsource Test Report

Product Infomation

Product Type: OJL158-25W-3000K-RA80-30° Product Number: 3

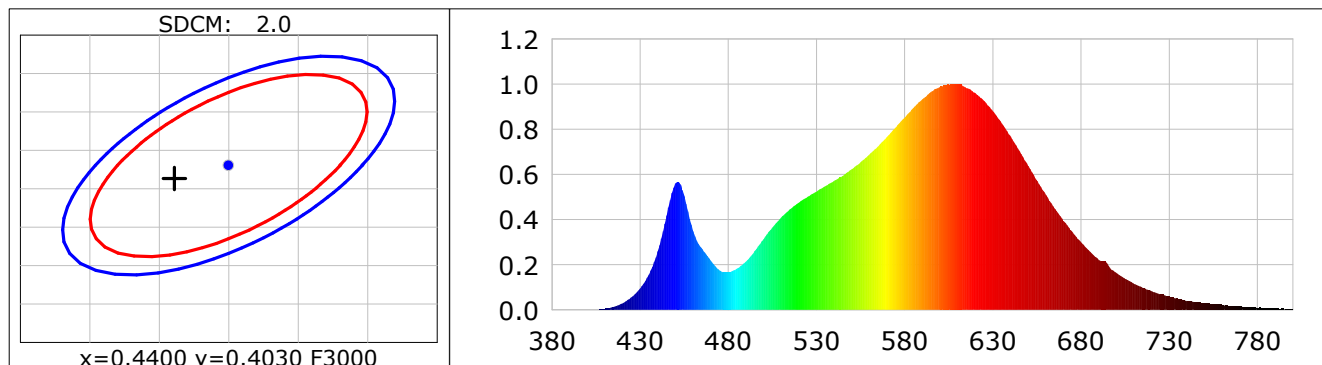
CIE Colorimetric Parameters

Chromaticity coordinates: $x=0.4361$ $y=0.4013$ $u(u')=0.2512$ $v=0.3468$ $v'=0.5202$
 CCT: $T_c=2991K$ ($duv=-0.00100$) Color Ratio: $R=0.233$ $G=0.742$ $B=0.024$
 Peak Wavelength: 607.6nm Half Bandwidth: 136.2nm
 Dominant Wavelength: 583.2nm Color Purity: 0.514
 CRI: $R_a=84.6$ TM30: $R_f=85$, $R_g=98$

R1 =83	R2 =91	R3 =97	R4 =84	R5 =84	R6 =90	R7 =84	R8 =64
R9 =18	R10=79	R11=83	R12=73	R13=85	R14=98	R15=77	

 Color Quality Scale: $Q_a=83.6$, $Q_f=84.8$, $Q_p=86.0$, $Q_g=93.9$

Q1 =80	Q2 =96	Q3 =82	Q4 =81	Q5 =84	Q6 =84	Q7 =84	Q8 =87
Q9 =96	Q10=89	Q11=86	Q12=85	Q13=84	Q14=75	Q15=77	



Photometric Parameters

Luminous Flux: 2529.55 lm Efficiency: 98.85 lm/W Radiant Power: 7.801 W
 EEI: 0.14 Energy Efficiency Class: A+ (EU 874-2012)

Electric Parameters

Voltage: 220.60V Current: 0.1230A Power: 25.59W
 Power Factor: -0.9440 Frequency: 49.99Hz

Test Infomation

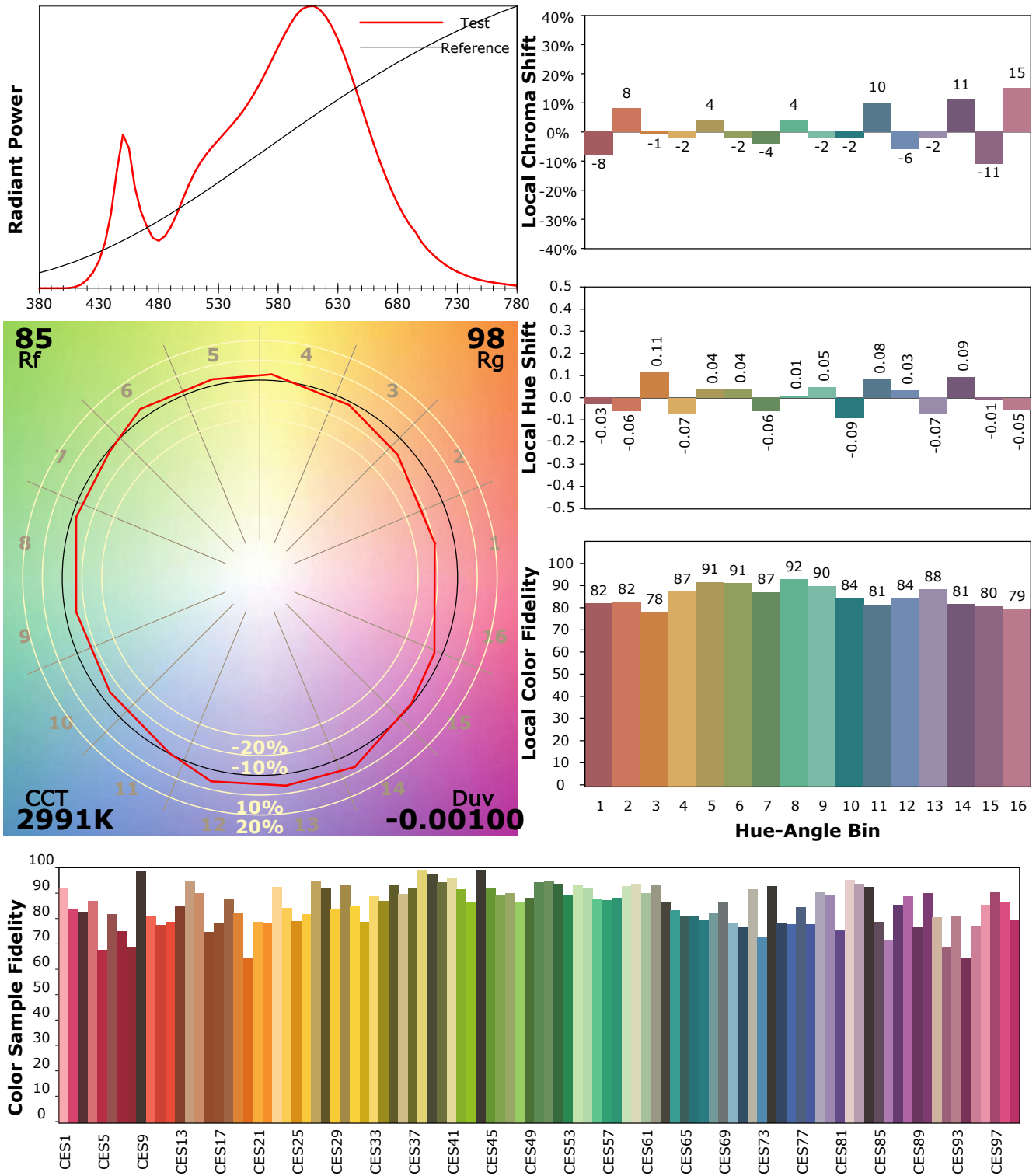
Scan Range: 380~800:1nm	Photometric Method: sphere-spectroradiometer
Stabilization Time: 0 Sec	Photometric Condition: Sphere diameter: 1.50m, 4π
Max of Signal: 46215 (2511)	CCD Integration Time: 136.49 ms

IES TM-30-18 Color Rendition Report

Product Information

Product Type: OJL158-25W-3000K-RA80-30°

Product Number: 3



Condition: Tx:27.0°C, Ti:25.1°C, R.H.:60%
 Test Lab:
 Operator:

Test Device: Inventfine CMS-2S (Plus)
 Test Time: 2021-10-12 09:27:00
 Inspector: