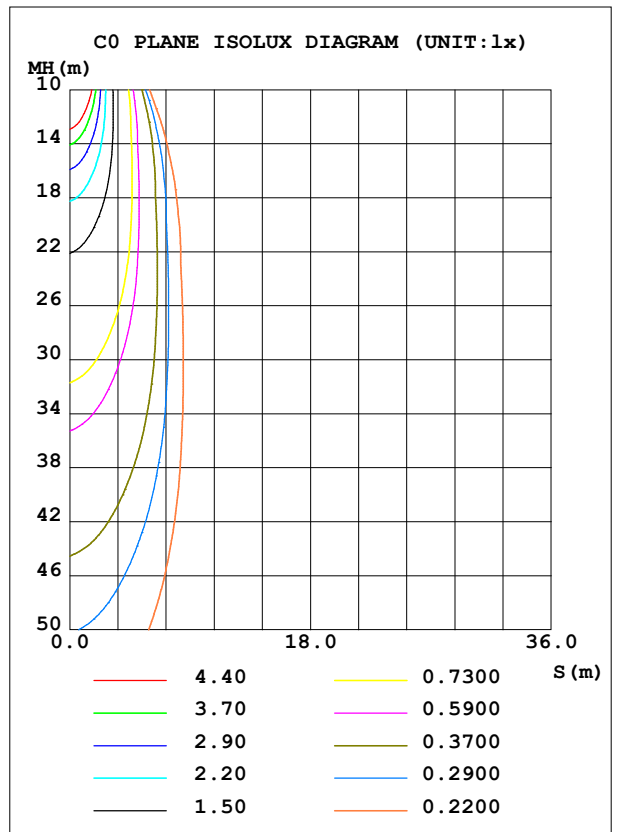
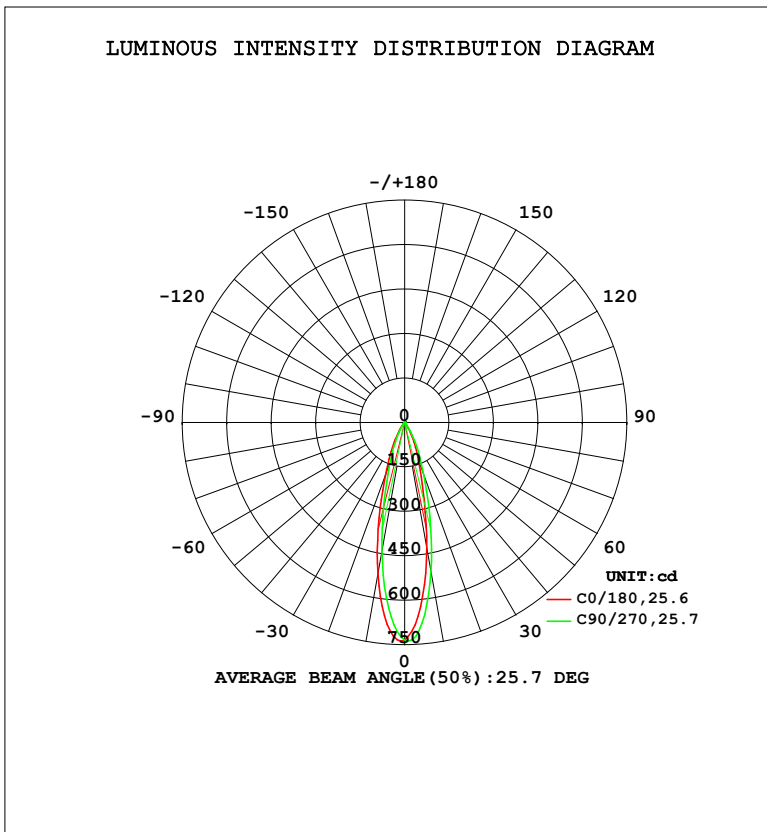


LUMINAIRE PHOTOMETRIC TEST REPORT

Test:U:110.2V I:0.0530A P:2.963W PF:0.5072 Freq:50.01Hz Lamp Flux:199.418x1 lm		
NAME: ALWL0020 3000K 20	TYPE:	WEIGHT:
SPEC.:	DIM.:	SERIAL No.:
MFR.: Alpha	SUR.:	Shielding Angle:

DATA OF LAMP		PHOTOMETRIC DATA				Eff: 67.30 lm/W
MODEL	ALWL0020	I _{max} (cd)	740.7	S/MH (C0/180)	0.47	
NOMINAL POWER (W)	3	LOR (%)	100.0	S/MH (C90/270)	0.40	
RATED VOLTAGE (V)		TOTAL FLUX (lm)	199.42	η UP, DN (C0-180)	0.0, 52.2	
NOMINAL FLUX (lm)	199.418	CIE CLASS	DIRECT	η UP, DN (C180-360)	0.1, 47.7	
LAMPS INSIDE	1	η up (%)	0.1	CIBSE SHR NOM	0.00	
TEST VOLTAGE (V)		η down (%)	99.9	CIBSE SHR MAX	0.30	



C Range: 0 - 360DEG
 C Interval: 22.5DEG
 Test Speed: HIGH
 Temperature: 25.2 °C
 Operators: Brooke
 Test Date: 2022-05-06

γ Range: 0 - 180DEG
 γ Interval: 1.0DEG
 Test System: EVERFINE GO-R5000_V2 SYSTEM V2.00.459
 Humidity: 55.0%
 Test Distance: 2.900m [K=0.8817]
 Remarks:

ZONAL FLUX DIAGRAM

ZONAL FLUX DIAGRAM:

γ	C0	C45	C90	C135	C180	C225	C270	C315	γ	Φ zone	Φ total	%lum, lamp
10	431.3	475.2	511.0	526.1	521.6	485.3	441.7	416.1	0- 10	56.57	56.57	28.4,28.4
20	137.7	163.6	191.4	194.2	190.9	170.1	144.4	130.2	10- 20	80.95	137.5	69,69
30	40.28	51.13	58.07	57.50	55.97	48.96	39.89	37.06	20- 30	44.02	181.5	91,91
40	6.248	6.977	8.228	8.574	9.680	8.972	7.250	6.325	30- 40	13.58	195.1	97.8,97.8
50	1.808	2.010	2.039	1.901	1.787	1.737	1.622	1.700	40- 50	2.978	198.1	99.3,99.3
60	0.4023	0.5206	0.5243	0.4908	0.4538	0.4060	0.3307	0.3717	50- 60	0.9508	199.0	99.8,99.8
70	0.0086	0.0085	0.0107	0.0150	0.0128	0.0077	0.0051	0.0051	60- 70	0.1288	199.2	99.9,99.9
80	0	0	0.0000	0.0009	0	0	0	0	70- 80	0.0031	199.2	99.9,99.9
90	0	0	0	0	0	0	0	0	80- 90	0.0000	199.2	99.9,99.9
100	0	0	0	0	0	0	0	0	90-100	0	199.2	99.9,99.9
110	0	0	0	0	0	0	0	0	100-110	0	199.2	99.9,99.9
120	0	0	0	0	0	0	0	0	110-120	0	199.2	99.9,99.9
130	0.0068	0.0038	0.0025	0.0009	0.0112	0.0137	0.0158	0.0167	120-130	0.0018	199.2	99.9,99.9
140	0.0536	0.0444	0.0378	0.0376	0.0804	0.0857	0.0835	0.0988	130-140	0.0243	199.2	99.9,99.9
150	0.1053	0.0912	0.0733	0.0911	0.2097	0.2099	0.1727	0.2186	140-150	0.0667	199.3	99.9,99.9
160	0.1314	0.1199	0.1010	0.1248	0.2987	0.2999	0.2476	0.2698	150-160	0.0826	199.3	100,100
170	0.1179	0.1088	0.1112	0.1210	0.2531	0.2478	0.2203	0.2172	160-170	0.0542	199.4	100,100
180	0.1406	0.1310	0.1295	0.1270	0.1459	0.1331	0.1313	0.1291	170-180	0.0149	199.4	100,100
DEG	LUMINOUS INTENSITY:cd									UNIT:lm		

Conical surface Flux(90deg): 197.09 lm

%lum = 98.8%

%lamp = 98.8%

Conical surface Flux(120deg): 199.04 lm

%lum = 99.8%

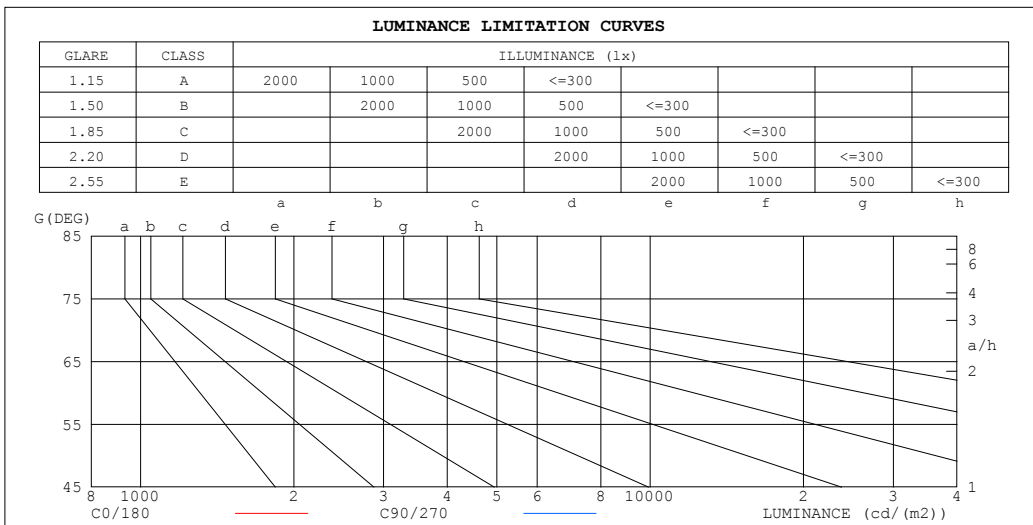
%lamp = 99.8%

C Range: 0 - 360DEG
C Interval: 22.5DEG
Test Speed: HIGH
Temperature:25.2℃
Operators:Brooke
Test Date:2022-05-06

γ Range: 0 - 180DEG
 γ Interval: 1.0DEG
Test System:EVERFINE GO-R5000_V2 SYSTEM V2.00.459
Humidity:55.0%
Test Distance:2.900m [K=0.8817]
Remarks:

LUMINANCE LIMITATION CURVES

Test:U:110.2V I:0.0530A P:2.963W PF:0.5072 Freq:50.01Hz Lamp Flux:199.418x1 lm		
NAME: ALWL0020 3000K 20	TYPE:	WEIGHT:
SPEC.:	DIM.:	SERIAL No.:
MFR.: Alpha	SUR.:	Shielding Angle:



LUMINANCE cd/(m2)		
G (DEG)	C0/180	C90/270
85	0	0
80	0	0
75	0	0
70	0	0
65	0	0
60	1	1
55	2	3
50	4	4
45	6	8

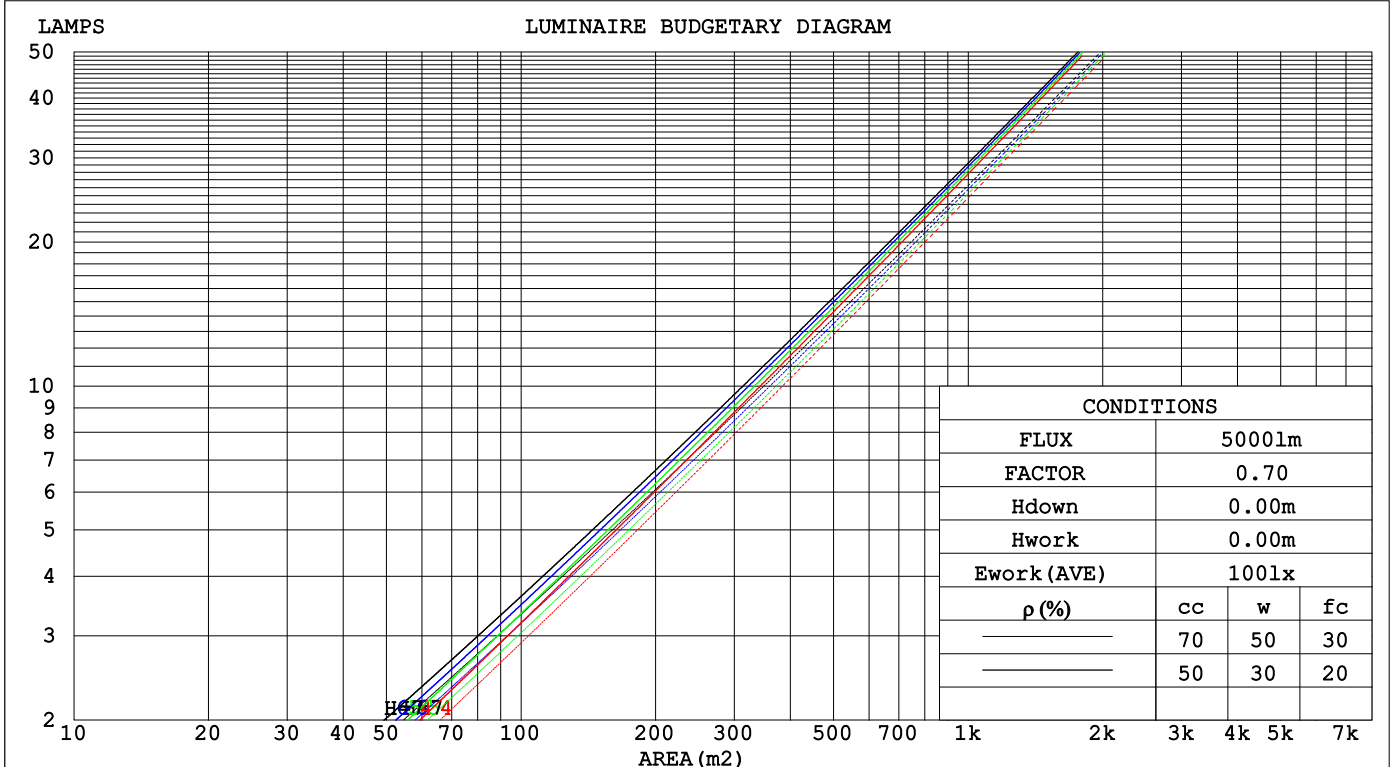
C Range: 0 - 360DEG
 C Interval: 22.5DEG
 Test Speed: HIGH
 Temperature: 25.2°C
 Operators: Brooke
 Test Date: 2022-05-06

γ Range: 0 - 180DEG
 γ Interval: 1.0DEG
 Test System: EVERFINE GO-R5000_V2 SYSTEM V2.00.459
 Humidity: 55.0%
 Test Distance: 2.900m [K=0.8817]
 Remarks:

CU AND LUMINAIRE BUDGETARY ESTIMATE DIAGRAM

Test:U:110.2V I:0.0530A P:2.963W PF:0.5072 Freq:50.01Hz Lamp Flux:199.418x1 lm		
NAME: ALWL0020 3000K 20	TYPE:	WEIGHT:
SPEC.:	DIM.:	SERIAL No.:
MFR.: Alpha	SUR.:	Shielding Angle:

pcc	80%			70%			50%			30%			10%			0
pw	50%	30%	10%	50%	30%	10%	50%	30%	10%	50%	30%	10%	50%	30%	10%	0
pfc	20%			20%			20%			20%			20%			0
RCR	RCR:Room Cavity Ratio						Coefficients of Utilization (CU)									
0.0	1.19	1.19	1.19	1.16	1.16	1.16	1.11	1.11	1.11	1.06	1.06	1.06	1.02	1.02	1.02	.00
1.0	1.12	1.10	1.09	1.10	1.08	1.07	1.06	1.05	1.04	1.03	1.01	1.00	.99	.98	.98	.96
2.0	1.07	1.03	1.01	1.05	1.02	.99	1.02	.99	.97	.99	.97	.95	.96	.95	.93	.92
3.0	1.01	.98	.94	1.00	.97	.94	.98	.95	.92	.95	.93	.91	.93	.91	.89	.88
4.0	.97	.93	.89	.96	.92	.89	.94	.90	.88	.92	.89	.87	.90	.88	.86	.85
5.0	.93	.88	.85	.92	.88	.85	.90	.87	.84	.89	.86	.83	.87	.85	.82	.81
6.0	.89	.84	.81	.88	.84	.81	.87	.83	.80	.86	.82	.80	.84	.82	.79	.78
7.0	.86	.81	.78	.85	.81	.78	.84	.80	.77	.83	.79	.77	.82	.79	.76	.75
8.0	.82	.78	.75	.82	.78	.75	.81	.77	.74	.80	.77	.74	.79	.76	.74	.73
9.0	.80	.75	.72	.79	.75	.72	.78	.74	.72	.77	.74	.71	.77	.74	.71	.70
10.0	.77	.72	.70	.77	.72	.69	.76	.72	.69	.75	.72	.69	.74	.71	.69	.68



C Range: 0 - 360DEG
 C Interval: 22.5DEG
 Test Speed: HIGH
 Temperature:25.2°C
 Operators:Brooke
 Test Date:2022-05-06

γ Range: 0 - 180DEG
 γ Interval: 1.0DEG
 Test System:EVERFINE GO-R5000_V2 SYSTEM V2.00.459
 Humidity:55.0%
 Test Distance:2.900m [K=0.8817]
 Remarks:

WEC AND CCEC

Test:U:110.2V I:0.0530A P:2.963W PF:0.5072 Freq:50.01Hz Lamp Flux:199.418x1 lm		
NAME: ALWL0020 3000K 20	TYPE:	WEIGHT:
SPEC.:	DIM.:	SERIAL No.:
MFR.: Alpha	SUR.:	Shielding Angle:

ρ _{cc}	80%			70%			50%			30%			10%			0
ρ _w	50%	30%	10%	50%	30%	10%	50%	30%	10%	50%	30%	10%	50%	30%	10%	0
ρ _{fc}	20%			20%			20%			20%			20%			0
RCR	RCR:Room Cavity Ratio						Wall Exitance Coefficients(WEC)									
0.0																
1.0	.146	.083	.026	.139	.079	.025	.127	.073	.023	.115	.066	.021	.105	.061	.020	
2.0	.137	.075	.023	.131	.072	.022	.121	.067	.021	.111	.062	.020	.102	.058	.018	
3.0	.128	.068	.020	.124	.066	.020	.115	.062	.019	.107	.059	.018	.099	.055	.017	
4.0	.121	.063	.018	.117	.061	.018	.110	.058	.017	.103	.055	.017	.096	.052	.016	
5.0	.115	.058	.017	.111	.057	.017	.105	.055	.016	.099	.052	.016	.093	.050	.015	
6.0	.109	.055	.016	.106	.053	.015	.100	.051	.015	.095	.050	.015	.090	.048	.014	
7.0	.104	.051	.015	.101	.050	.014	.096	.049	.014	.092	.047	.014	.088	.046	.013	
8.0	.099	.048	.014	.097	.048	.013	.093	.046	.013	.089	.045	.013	.085	.044	.013	
9.0	.095	.046	.013	.093	.045	.013	.089	.044	.012	.086	.043	.012	.082	.042	.012	
10.0	.091	.044	.012	.089	.043	.012	.086	.042	.012	.083	.041	.012	.080	.040	.012	

ρ _{cc}	80%			70%			50%			30%			10%			0
ρ _w	50%	30%	10%	50%	30%	10%	50%	30%	10%	50%	30%	10%	50%	30%	10%	0
ρ _{fc}	20%			20%			20%			20%			20%			0
RCR	RCR:Room Cavity Ratio						Ceiling Cavity Exitance Coefficients(CCEC)									
0.0	.191	.191	.191	.164	.164	.164	.112	.112	.112	.064	.064	.064	.021	.021	.021	
1.0	.170	.159	.148	.145	.136	.128	.099	.094	.088	.057	.054	.051	.018	.017	.017	
2.0	.152	.134	.118	.131	.115	.102	.090	.080	.071	.052	.046	.042	.017	.015	.014	
3.0	.138	.114	.095	.118	.099	.083	.081	.068	.058	.047	.040	.034	.015	.013	.011	
4.0	.126	.099	.078	.108	.086	.068	.074	.060	.048	.043	.035	.028	.014	.011	.009	
5.0	.116	.087	.065	.100	.075	.057	.069	.053	.040	.040	.031	.024	.013	.010	.008	
6.0	.108	.077	.055	.093	.067	.048	.064	.047	.034	.037	.028	.020	.012	.009	.007	
7.0	.100	.069	.047	.086	.060	.041	.060	.042	.029	.035	.025	.017	.011	.008	.006	
8.0	.094	.062	.041	.081	.054	.036	.056	.038	.025	.033	.022	.015	.011	.007	.005	
9.0	.089	.057	.036	.076	.049	.031	.053	.035	.022	.031	.021	.013	.010	.007	.004	
10.0	.084	.052	.031	.072	.045	.027	.050	.032	.019	.029	.019	.012	.009	.006	.004	

C Range: 0 - 360DEG
 C Interval: 22.5DEG
 Test Speed: HIGH
 Temperature:25.2℃
 Operators:Brooke
 Test Date:2022-05-06

γ Range: 0 - 180DEG
 γ Interval: 1.0DEG
 Test System:EVERFINE GO-R5000_V2 SYSTEM V2.00.459
 Humidity:55.0%
 Test Distance:2.900m [K=0.8817]
 Remarks:

UGR(Unified Glare Rating) Table

Test:U:110.2V I:0.0530A P:2.963W PF:0.5072 Freq:50.01Hz										
Lamp Flux:199.418x1 lm										
NAME: ALWL0020 3000K 20					TYPE:			WEIGHT:		
SPEC.:					DIM.:			SERIAL No.:		
MFR.: Alpha					SUR.:			Shielding Angle:		
ceiling/cavity	0.7	0.7	0.5	0.5	0.3	0.7	0.7	0.5	0.5	0.3
walls	0.5	0.3	0.5	0.3	0.3	0.5	0.3	0.5	0.3	0.3
working plane	0.2	0.2	0.2	0.2	0.2	0.2	0.2	0.2	0.2	0.2
Room dimensions	Viewed crosswise					Viewed endwise				
x = 2H y = 2H	-12.9	-12.2	-12.7	-12.0	-11.9	-11.1	-10.4	-10.9	-10.3	-10.1
3H	-13.0	-12.4	-12.8	-12.2	-12.0	-11.3	-10.6	-11.1	-10.4	-10.3
4H	-13.1	-12.5	-12.9	-12.3	-12.1	-11.4	-10.7	-11.1	-10.5	-10.3
6H	-13.2	-12.6	-12.9	-12.4	-12.1	-11.5	-10.9	-11.2	-10.6	-10.4
8H	-13.3	-12.7	-13.0	-12.4	-12.2	-11.5	-10.9	-11.2	-10.7	-10.4
12H	-13.3	-12.7	-13.0	-12.5	-12.2	-11.6	-11.0	-11.2	-10.7	-10.5
4H 2H	-13.1	-12.5	-12.8	-12.2	-12.0	-11.4	-10.7	-11.1	-10.5	-10.3
3H	-13.3	-12.7	-13.0	-12.4	-12.2	-11.5	-11.0	-11.2	-10.7	-10.5
4H	-13.4	-12.9	-13.0	-12.6	-12.3	-11.6	-11.1	-11.3	-10.8	-10.5
6H	-13.5	-13.0	-13.1	-12.7	-12.3	-11.7	-11.3	-11.4	-11.0	-10.6
8H	-13.5	-13.1	-13.1	-12.7	-12.4	-11.8	-11.4	-11.4	-11.0	-10.7
12H	-13.6	-13.2	-13.2	-12.8	-12.4	-11.8	-11.5	-11.4	-11.1	-10.7
8H 4H	-13.5	-13.1	-13.1	-12.7	-12.4	-11.8	-11.4	-11.4	-11.0	-10.7
6H	-13.6	-13.3	-13.2	-12.9	-12.5	-11.9	-11.6	-11.5	-11.2	-10.8
8H	-13.7	-13.4	-13.2	-13.0	-12.5	-12.0	-11.7	-11.5	-11.2	-10.8
12H	-13.7	-13.5	-13.3	-13.0	-12.6	-12.0	-11.8	-11.6	-11.3	-10.8
12H 4H	-13.6	-13.2	-13.2	-12.8	-12.4	-11.8	-11.5	-11.4	-11.1	-10.7
6H	-13.7	-13.4	-13.2	-13.0	-12.5	-12.0	-11.7	-11.5	-11.2	-10.8
8H	-13.7	-13.5	-13.3	-13.0	-12.6	-12.0	-11.8	-11.6	-11.3	-10.8
Variations with the observer position at spacings(CIE Pub.117):										
S = 1.0H	+ 3.2 / - 7.8					+ 3.9 / - 8.1				
1.5H	+ 4.8 / - 4.5					+ 5.7 / - 5.4				
2.0H	+ 4.4 / - 8.1					+ 5.2 / - 8.4				

CIE Pub.117, 199.4 lm Total Lamp Luminous Flux Corrected (8log(F/F0) = -5.6)
 Area: 0.72 m2

C Range: 0 - 360DEG
 C Interval: 22.5DEG
 Test Speed: HIGH
 Temperature:25.2℃
 Operators:Brooke
 Test Date:2022-05-06

γ Range: 0 - 180DEG
 γ Interval: 1.0DEG
 Test System:EVERFINE GO-R5000_V2 SYSTEM V2.00.459
 Humidity:55.0%
 Test Distance:2.900m [K=0.8817]
 Remarks:

UTILIZATION FACTORS TABLE

Test:U:110.2V I:0.0530A P:2.963W PF:0.5072 Freq:50.01Hz Lamp Flux:199.418x1 lm		
NAME: ALWL0020 3000K 20	TYPE:	WEIGHT:
SPEC.:	DIM.:	SERIAL No.:
MFR.: Alpha	SUR.:	Shielding Angle:

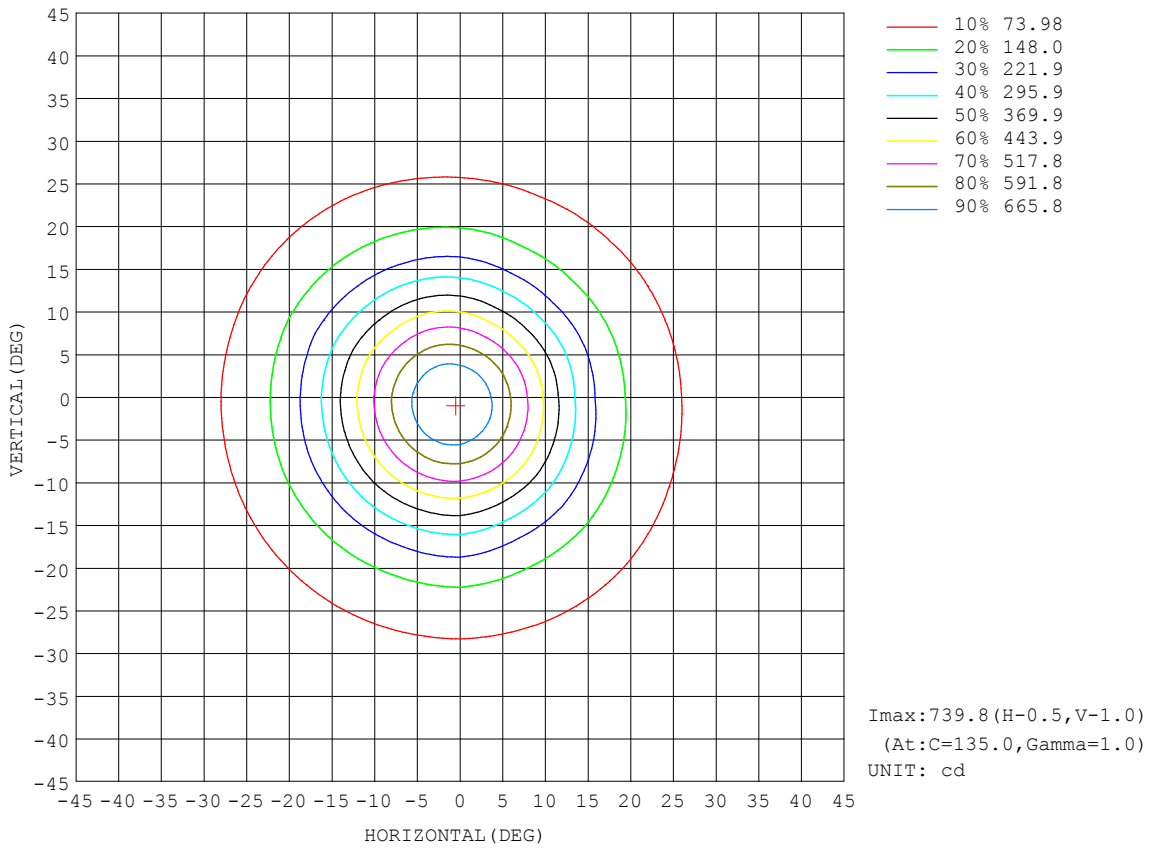
REFLECTANCE										
Ceiling	0.8	0.8	0.8	0.7	0.7	0.7	0.5	0.5	0.5	0
Walls	0.7	0.5	0.3	0.7	0.5	0.3	0.7	0.5	0.3	0
Working plane	0.2	0.2	0.2	0.2	0.2	0.2	0.2	0.2	0.2	0
ROOM INDEX	UTILIZATION FACTORS (PERCENT) $k(RI) \times RCR = 5$									
k = 0.60	90	84	81	90	84	81	89	84	81	77
0.80	97	92	89	97	92	88	95	91	88	85
1.00	101	96	93	100	96	92	99	95	92	88
1.25	105	100	97	104	100	97	102	98	96	92
1.50	107	103	100	106	102	99	104	101	98	94
2.00	110	106	103	108	105	102	106	103	101	96
2.50	111	108	105	109	106	104	106	104	102	96
3.00	112	109	107	111	108	106	107	105	104	97
4.00	114	112	110	112	110	108	109	107	106	99
5.00	116	113	112	113	112	110	109	108	107	100
ROOM INDEX	UF(total)									Direct
According to DIN EN 13032-2 2004			Suspended				SHRNOM = 1.25			

C Range: 0 - 360DEG
 C Interval: 22.5DEG
 Test Speed: HIGH
 Temperature:25.2°C
 Operators:Brooke
 Test Date:2022-05-06

γ Range: 0 - 180DEG
 γ Interval: 1.0DEG
 Test System:EVERFINE GO-R5000_V2 SYSTEM V2.00.459
 Humidity:55.0%
 Test Distance:2.900m [K=0.8817]
 Remarks:

ISOCANDELA DIAGRAM

Test:U:110.2V I:0.0530A P:2.963W PF:0.5072 Freq:50.01Hz		
Lamp Flux:199.418x1 lm		
NAME: ALWL0020 3000K 20	TYPE:	WEIGHT:
SPEC.:	DIM.:	SERIAL No.:
MFR.: Alpha	SUR.:	Shielding Angle:

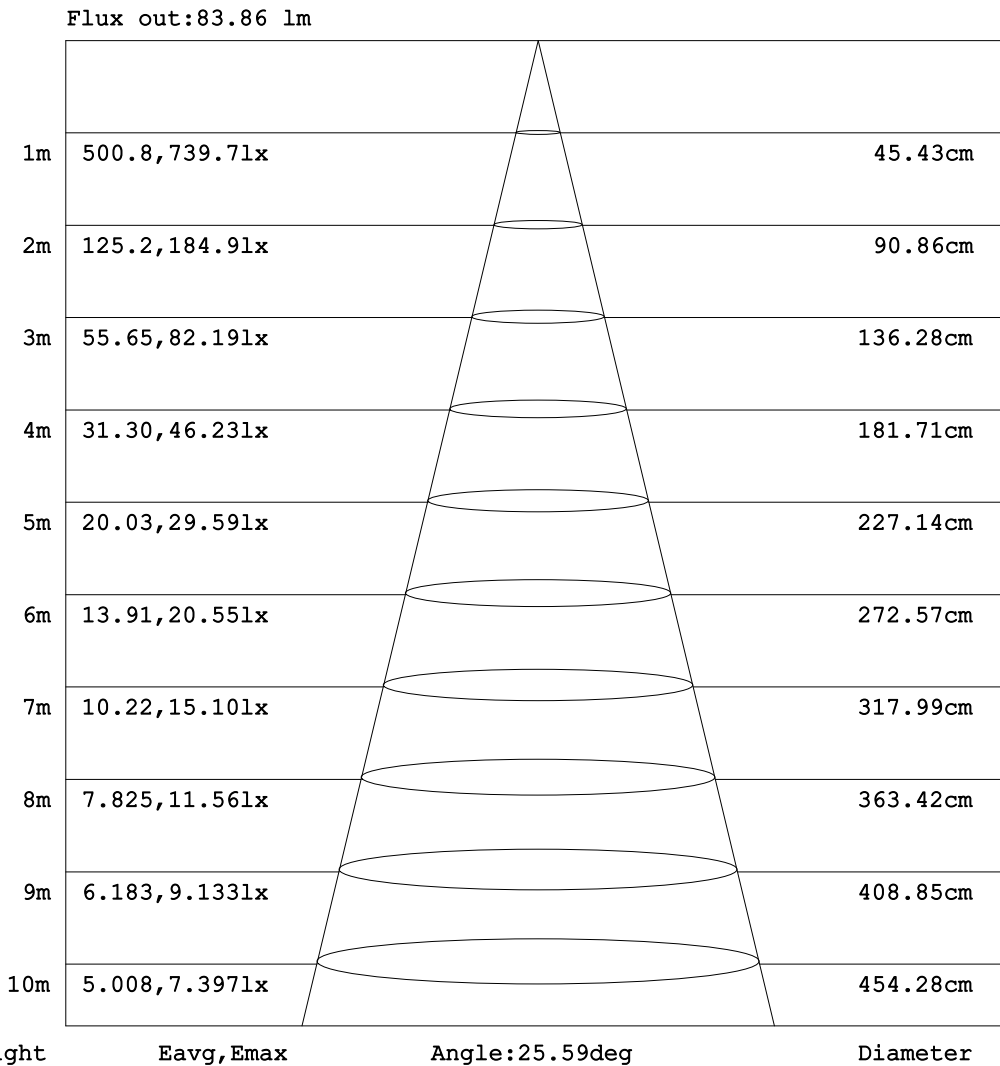


C Range: 0 - 360DEG
 C Interval: 22.5DEG
 Test Speed: HIGH
 Temperature: 25.2°C
 Operators: Brooke
 Test Date: 2022-05-06

γ Range: 0 - 180DEG
 γ Interval: 1.0DEG
 Test System: EVERFINE GO-R5000_V2 SYSTEM V2.00.459
 Humidity: 55.0%
 Test Distance: 2.900m [K=0.8817]
 Remarks:

AAI Figure

Test:U:110.2V I:0.0530A P:2.963W PF:0.5072 Freq:50.01Hz Lamp Flux:199.418x1 lm		
NAME: ALWL0020 3000K 20	TYPE:	WEIGHT:
SPEC.:	DIM.:	SERIAL No.:
MFR.: Alpha	SUR.:	Shielding Angle:



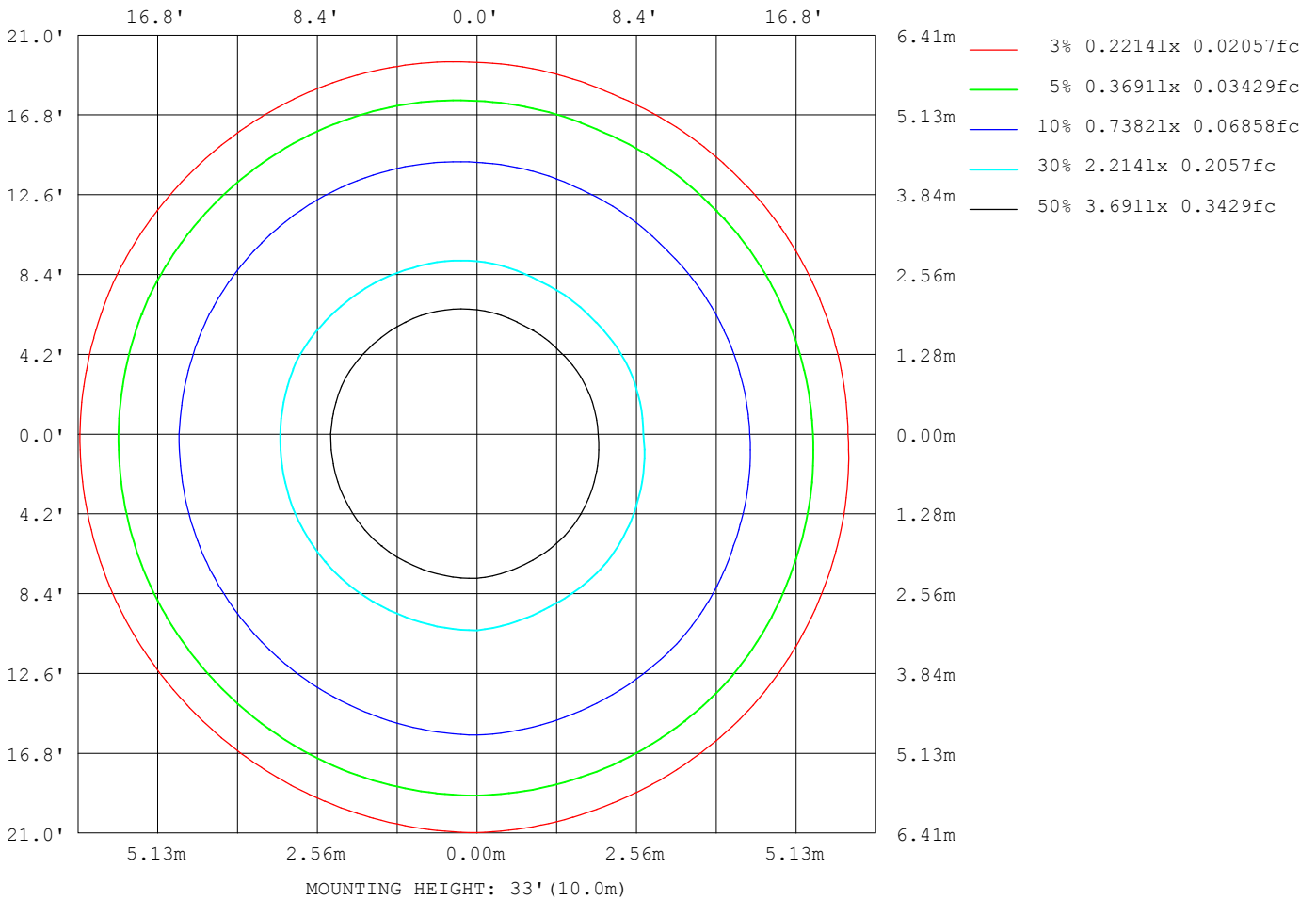
Note:The Curves indicate the illuminated area and the average illumination when the luminaire is at different distance.

C Range: 0 - 360DEG
 C Interval: 22.5DEG
 Test Speed: HIGH
 Temperature:25.2°C
 Operators:Brooke
 Test Date:2022-05-06

γ Range: 0 - 180DEG
 γ Interval: 1.0DEG
 Test System:EVERFINE GO-R5000_V2 SYSTEM V2.00.459
 Humidity:55.0%
 Test Distance:2.900m [K=0.8817]
 Remarks:

ISOLUX DIAGRAM

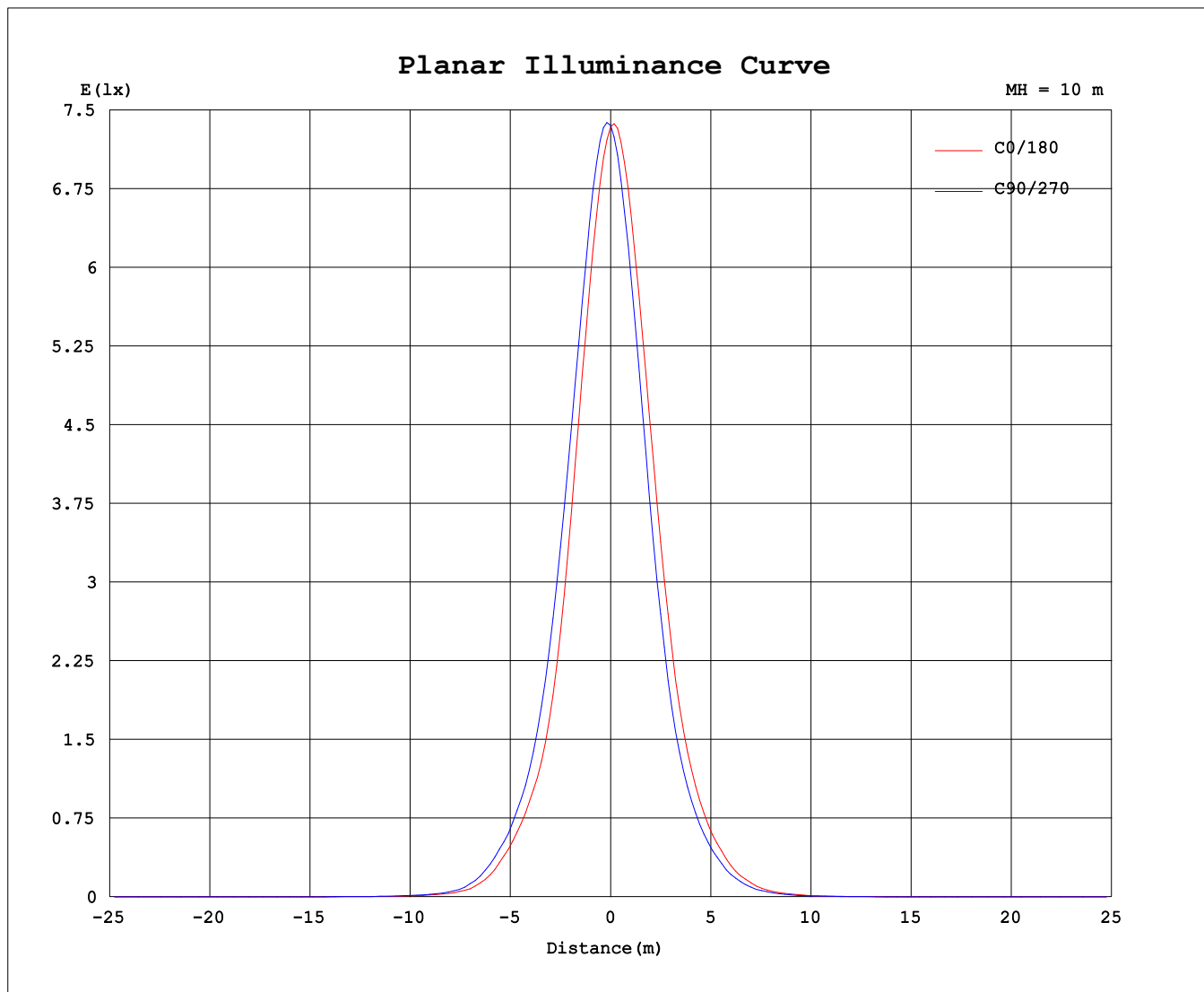
Test:U:110.2V I:0.0530A P:2.963W PF:0.5072 Freq:50.01Hz Lamp Flux:199.418x1 lm		
NAME: ALWL0020 3000K 20	TYPE:	WEIGHT:
SPEC.:	DIM.:	SERIAL No.:
MFR.: Alpha	SUR.:	Shielding Angle:



C Range: 0 - 360DEG
 C Interval: 22.5DEG
 Test Speed: HIGH
 Temperature:25.2°C
 Operators:Brooke
 Test Date:2022-05-06

γ Range: 0 - 180DEG
 γ Interval: 1.0DEG
 Test System:EVERFINE GO-R5000_V2 SYSTEM V2.00.459
 Humidity:55.0%
 Test Distance:2.900m [K=0.8817]
 Remarks:

Planar Illuminance Curve



C Range: 0 - 360DEG
C Interval: 22.5DEG
Test Speed: HIGH
Temperature: 25.2°C
Operators: Brooke
Test Date: 2022-05-06

γ Range: 0 - 180DEG
γ Interval: 1.0DEG
Test System: EVERFINE GO-R5000_V2 SYSTEM V2.00.459
Humidity: 55.0%
Test Distance: 2.900m [K=0.8817]
Remarks:

LUMINOUS DISTRIBUTION INTENSITY DATA

Test:U:110.2V I:0.0530A P:2.963W PF:0.5072 Freq:50.01Hz Lamp Flux:199.418x1 lm		
NAME: ALWL0020 3000K 20	TYPE:	WEIGHT:
SPEC.:	DIM.:	SERIAL No.:
MFR.: Alpha	SUR.:	Shielding Angle:

Table--1

UNIT: cd

C (DEG) \ γ (DEG)	0	22.5	45	67.5	90	112.5	135	157.5	180	202.5	225	247.5	270	292.5	315	337.5				
0	734	734	734	734	734	734	734	734	734	734	734	734	734	734	734	734				
5	623	637	651	666	680	689	693	690	683	670	657	643	627	617	615	617				
10	431	452	475	494	511	520	526	527	522	509	485	467	442	420	416	424				
15	245	267	291	307	330	334	341	340	335	325	303	282	263	240	235	242				
20	138	149	164	173	191	191	194	196	191	186	170	156	144	133	130	135				
25	83.3	89.8	98.1	104	111	109	110	110	108	103	95.0	87.2	80.5	75.4	75.3	78.5				
30	40.3	44.9	51.1	55.4	58.1	58.2	57.5	57.2	56.0	54.1	49.0	44.5	39.9	36.7	37.1	39.0				
35	14.4	15.9	18.3	20.3	23.0	22.3	22.6	23.7	24.6	23.9	21.1	19.0	17.0	14.7	14.0	14.5				
40	6.25	6.55	6.98	7.49	8.23	8.43	8.57	9.35	9.68	9.69	8.97	8.17	7.25	6.37	6.33	6.34				
45	3.11	3.33	3.63	3.84	4.02	3.98	3.87	3.89	3.81	3.68	3.39	3.10	2.76	2.81	2.93	3.00				
50	1.81	1.91	2.01	2.07	2.04	2.06	1.90	1.80	1.79	1.75	1.74	1.71	1.62	1.69	1.70	1.70				
55	0.99	1.08	1.15	1.19	1.20	1.21	1.14	1.09	1.09	1.03	1.00	0.96	0.85	0.93	0.92	0.91				
60	0.40	0.47	0.52	0.53	0.52	0.53	0.49	0.47	0.45	0.40	0.41	0.39	0.33	0.37	0.37	0.36				
65	0.02	0.06	0.13	0.15	0.14	0.15	0.14	0.11	0.07	0.03	0.02	0.02	0.02	0.02	0.02	0.02				
70	0.01	0.01	0.01	0.01	0.01	0.01	0.01	0.02	0.01	0.01	0.01	0.01	0.01	0.00	0.01	0.00				
75	0.00	0.00	0.00	0.00	0.00	0.01	0.01	0.01	0.00	0.00	0.00	0.00	0.00	0.00	0.00	0.00				
80	0.00	0.00	0.00	0.00	0.00	0.00	0.00	0.00	0.00	0.00	0.00	0.00	0.00	0.00	0.00	0.00				
85	0.00	0.00	0.00	0.00	0.00	0.00	0.00	0.00	0.00	0.00	0.00	0.00	0.00	0.00	0.00	0.00				
90	0.00	0.00	0.00	0.00	0.00	0.00	0.00	0.00	0.00	0.00	0.00	0.00	0.00	0.00	0.00	0.00				
95	0.00	0.00	0.00	0.00	0.00	0.00	0.00	0.00	0.00	0.00	0.00	0.00	0.00	0.00	0.00	0.00				
100	0.00	0.00	0.00	0.00	0.00	0.00	0.00	0.00	0.00	0.00	0.00	0.00	0.00	0.00	0.00	0.00				
105	0.00	0.00	0.00	0.00	0.00	0.00	0.00	0.00	0.00	0.00	0.00	0.00	0.00	0.00	0.00	0.00				
110	0.00	0.00	0.00	0.00	0.00	0.00	0.00	0.00	0.00	0.00	0.00	0.00	0.00	0.00	0.00	0.00				
115	0.00	0.00	0.00	0.00	0.00	0.00	0.00	0.00	0.00	0.00	0.00	0.00	0.00	0.00	0.00	0.00				
120	0.00	0.00	0.00	0.00	0.00	0.00	0.00	0.00	0.00	0.00	0.00	0.00	0.00	0.00	0.00	0.00				
125	0.00	0.00	0.00	0.00	0.00	0.00	0.00	0.00	0.00	0.00	0.00	0.00	0.00	0.00	0.00	0.00				
130	0.01	0.01	0.00	0.00	0.00	0.00	0.00	0.00	0.01	0.01	0.01	0.01	0.02	0.02	0.02	0.02				
135	0.02	0.02	0.02	0.02	0.02	0.01	0.01	0.01	0.04	0.04	0.04	0.04	0.04	0.04	0.04	0.05	0.05			
140	0.05	0.05	0.04	0.04	0.04	0.04	0.04	0.04	0.08	0.08	0.09	0.08	0.08	0.09	0.10	0.10				
145	0.09	0.08	0.07	0.06	0.06	0.06	0.07	0.07	0.14	0.15	0.15	0.14	0.13	0.14	0.16	0.17				
150	0.11	0.10	0.09	0.07	0.07	0.08	0.09	0.09	0.21	0.21	0.21	0.19	0.17	0.19	0.22	0.24				
155	0.13	0.12	0.11	0.09	0.09	0.10	0.12	0.12	0.27	0.28	0.27	0.26	0.22	0.22	0.26	0.29				
160	0.13	0.13	0.12	0.10	0.10	0.11	0.12	0.13	0.30	0.30	0.30	0.28	0.25	0.24	0.27	0.30				
165	0.13	0.12	0.12	0.10	0.10	0.12	0.13	0.12	0.29	0.29	0.28	0.27	0.24	0.23	0.24	0.27				
170	0.12	0.11	0.11	0.11	0.11	0.12	0.12	0.11	0.25	0.25	0.25	0.23	0.22	0.21	0.22	0.23				
175	0.11	0.11	0.10	0.10	0.11	0.11	0.11	0.11	0.20	0.20	0.20	0.19	0.18	0.18	0.18	0.17				
180	0.14	0.13	0.13	0.13	0.13	0.13	0.13	0.12	0.15	0.14	0.13	0.13	0.13	0.13	0.13	0.13				

C Range: 0 - 360DEG
 C Interval: 22.5DEG
 Test Speed: HIGH
 Temperature:25.2℃
 Operators:Brooke
 Test Date:2022-05-06

γ Range: 0 - 180DEG
 γ Interval: 1.0DEG
 Test System:EVERFINE GO-R5000_V2 SYSTEM V2.00.459
 Humidity:55.0%
 Test Distance:2.900m [K=0.8817]
 Remarks: