

Report No.:

Test Time: 2021/5/22 17:05:53

LUMINAIRE PHOTOMETRIC TEST REPORT

Luminaire Property

Manufacturer: 0
 Luminaire Type: OJL-504-WH
 Lamp Type:
 Luminous Width: 0 mm
 Luminous Length: 0 mm
 Luminous Height: 0 mm

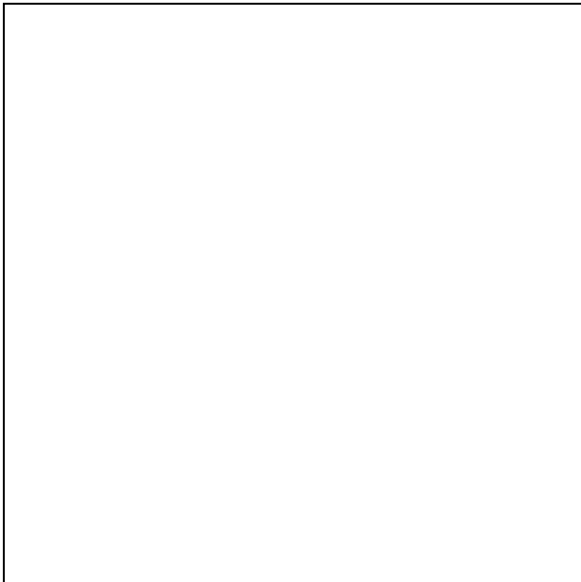
Voltage(V): 109.91 V
 Current(A): 0.1100 A
 Power(W): 12.07 W
 Power Factor: 0.9950
 Lamp Luminous Flux: 895.86

Photometric Results

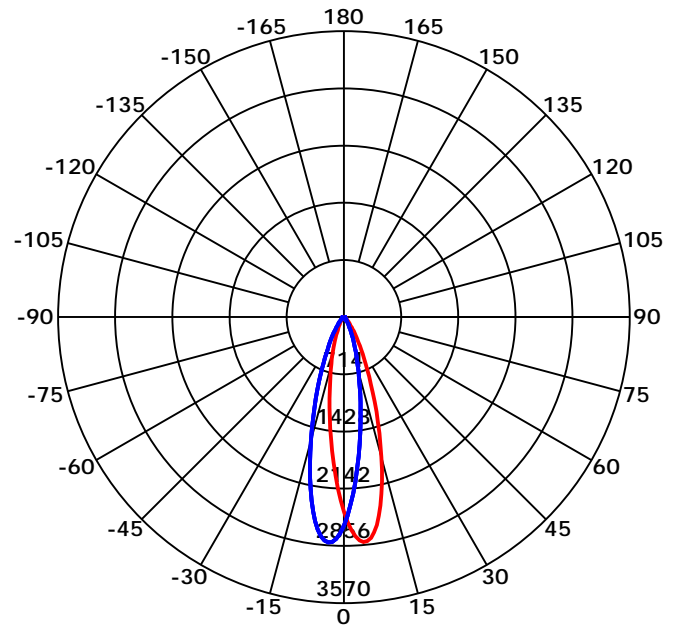
CIE Class: Direct
 Luminaire Luminous Flux: 895.8638
 Downward Ratio: 100.00%
 Luminaire Efficacy Rating(LER): 74.22 lm/W
 Beam Angle(50%) C0-180,C90-270: 24.7,24.7
 Field Angle(10%) C0-180,C90-270: 54.6,54.4

Max. Intensity: 2855.86 cd
 Max.Intensity Angle: C=315 Gamma=6
 Upward Ratio: 0.00%
 Efficacy: 100.00%
 Center Intensity: 2426.73 cd

Picture of Luminaire



Luminous Intensity Distribution Curve



Beam Angle(50%) C0-180,C90-270: 24.7 deg,24.7 deg

C0-180 ——— C90-270 ———

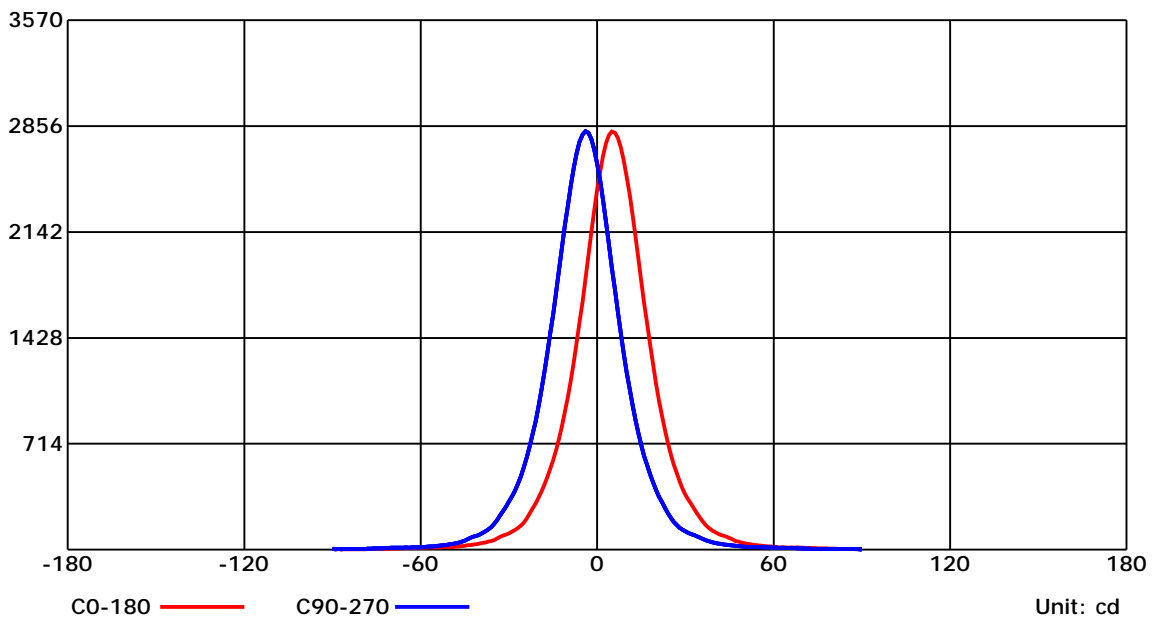
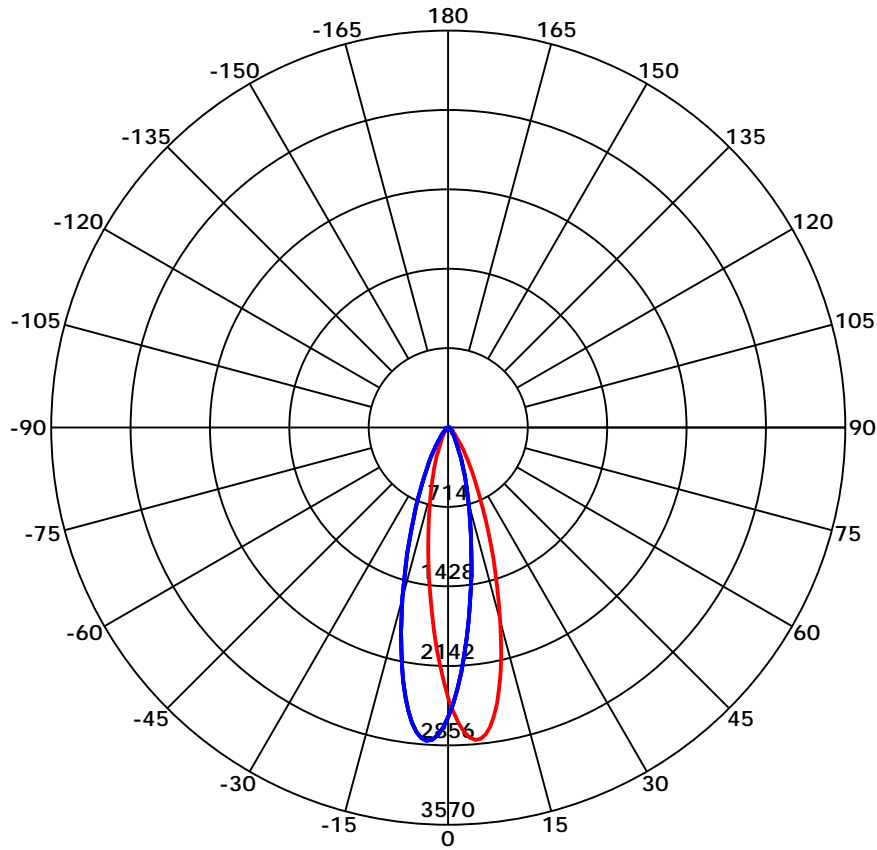
C Range: 0 - 360 Deg
 C Interval: 45.0 Deg
 Test Speed: High
 Temperature:
 Operators:
 Test Date: 2021/5/22 17:05:53

G Range: 0 - 90 Deg
 G Interval: 1.0 Deg
 Test System: Huipu CPM-1800B Goniophotometer
 Humidity:
 Test Distance: 6.031 m
 Remarks:

Report No.:

Test Time: 2021/5/22 17:05:53

Luminous Intensity Distribution Curve



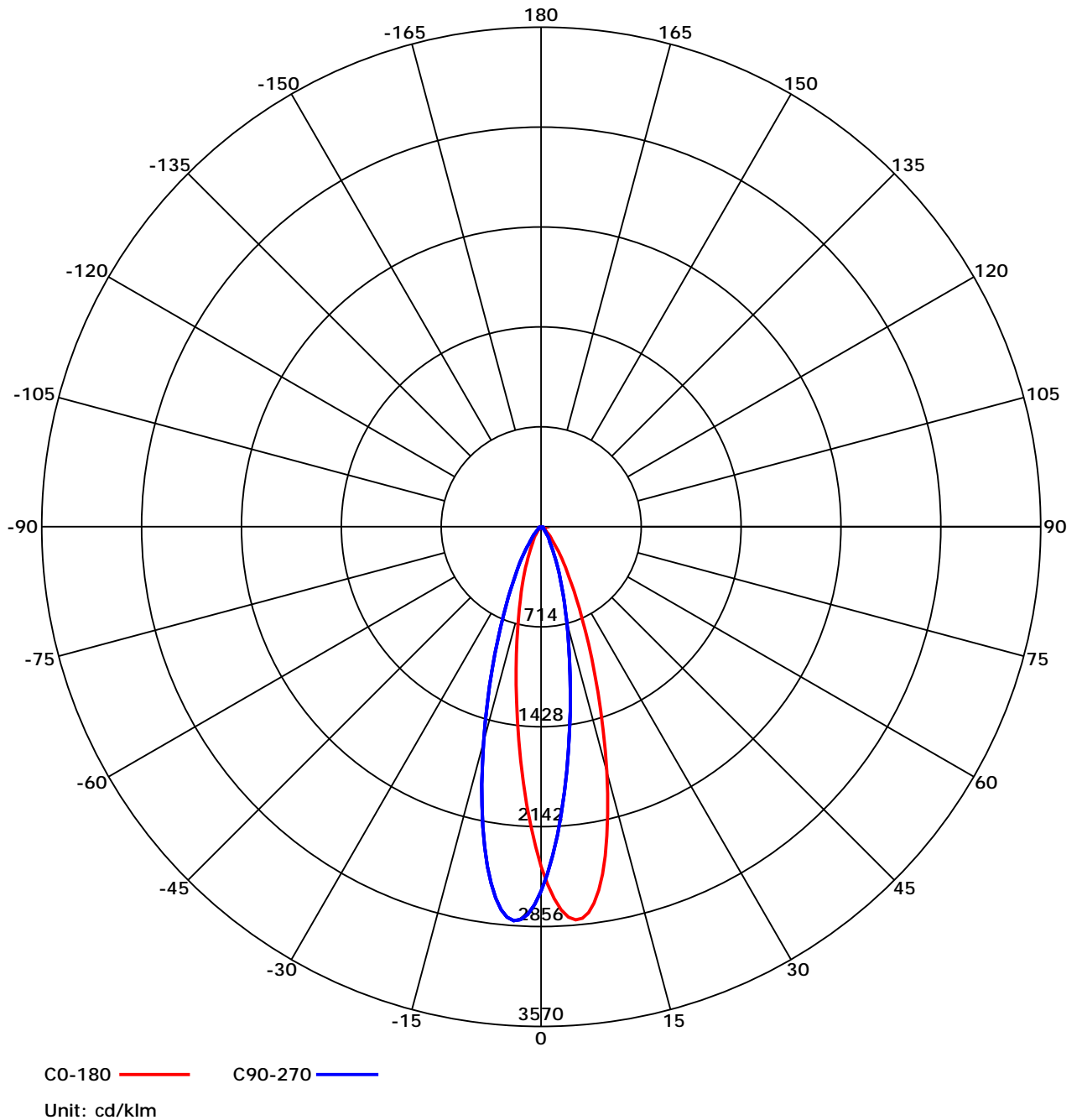
C Range: 0 - 360 Deg
 C Interval: 45.0 Deg
 Test Speed: High
 Temperature:
 Operators:
 Test Date: 2021/5/22 17:05:53

G Range: 0 - 90 Deg
 G Interval: 1.0 Deg
 Test System: Huipu CPM-1800B Goniophotometer
 Humidity:
 Test Distance: 6.031 m
 Remarks:

Report No.:

Test Time: 2021/5/22 17:05:53

Luminous Intensity Distribution Curve



C Range: 0 - 360 Deg

C Interval: 45.0 Deg

Test Speed: High

Temperature:

Operators:

Test Date: 2021/5/22 17:05:53

G Range: 0 - 90 Deg

G Interval: 1.0 Deg

Test System: Huipu CPM-1800B Goniophotometer

Humidity:

Test Distance: 6.031 m

Remarks:

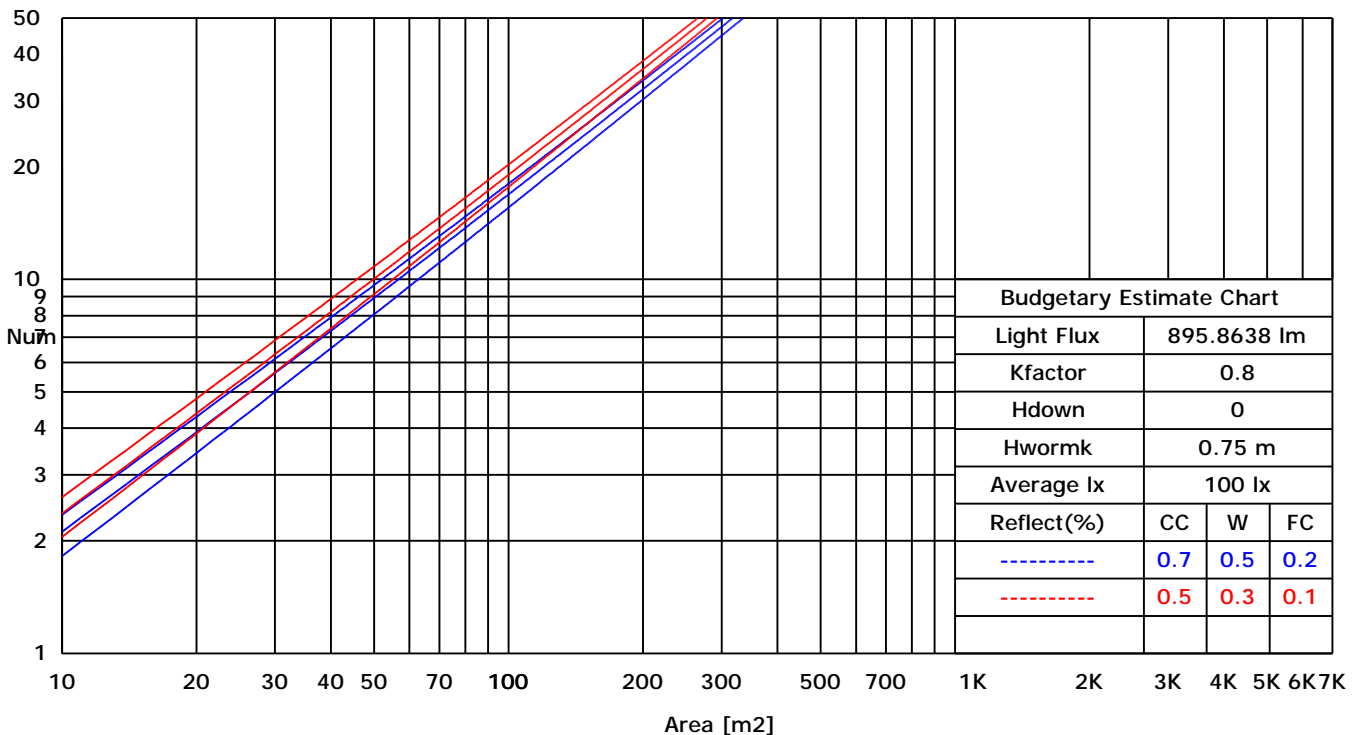
Report No.:

Test Time: 2021/5/22 17:05:53

UTILIZATION FACTORS TABLE

RHOCC	80			70			50			30			10			0
RHOW	50	30	10	50	30	10	50	30	10	50	30	10	50	30	10	0
RCR	COEFFICIENTS OF UTILIZATION FOR RHOFC=20															
0	1.19	1.19	1.19	1.16	1.16	1.16	1.11	1.11	1.11	1.06	1.06	1.06	1.02	1.02	1.02	1.00
1	0.95	0.92	0.90	0.94	0.91	0.89	0.91	0.88	0.85	0.87	0.84	0.81	0.82	0.78	0.75	0.70
2	0.90	0.88	0.86	0.90	0.87	0.84	0.87	0.84	0.81	0.84	0.80	0.77	0.79	0.75	0.72	0.67
3	0.86	0.84	0.83	0.86	0.83	0.81	0.84	0.80	0.78	0.81	0.77	0.74	0.77	0.73	0.69	0.65
4	0.83	0.81	0.80	0.83	0.80	0.78	0.81	0.77	0.75	0.78	0.74	0.71	0.75	0.70	0.67	0.62
5	0.80	0.79	0.77	0.80	0.77	0.76	0.78	0.75	0.72	0.76	0.72	0.69	0.73	0.68	0.65	0.61
6	0.78	0.76	0.75	0.77	0.75	0.73	0.76	0.72	0.70	0.74	0.70	0.66	0.71	0.66	0.63	0.59
7	0.76	0.74	0.73	0.75	0.73	0.71	0.74	0.70	0.68	0.72	0.68	0.65	0.69	0.64	0.61	0.57
8	0.74	0.72	0.71	0.73	0.71	0.70	0.72	0.68	0.66	0.70	0.66	0.63	0.67	0.63	0.59	0.56
9	0.72	0.71	0.70	0.71	0.69	0.68	0.70	0.67	0.65	0.68	0.64	0.61	0.66	0.61	0.58	0.55
10	0.70	0.69	0.68	0.70	0.68	0.67	0.68	0.65	0.63	0.66	0.63	0.60	0.64	0.60	0.57	0.54

LUMINAIRE BUDGETARY ESTIMATE DIAGRAM



C Range: 0 - 360 Deg

C Interval: 45.0 Deg

Test Speed: High

Temperature:

Operators:

Test Date: 2021/5/22 17:05:53

G Range: 0 - 90 Deg

G Interval: 1.0 Deg

Test System: Huipu CPM-1800B Goniophotometer

Humidity:

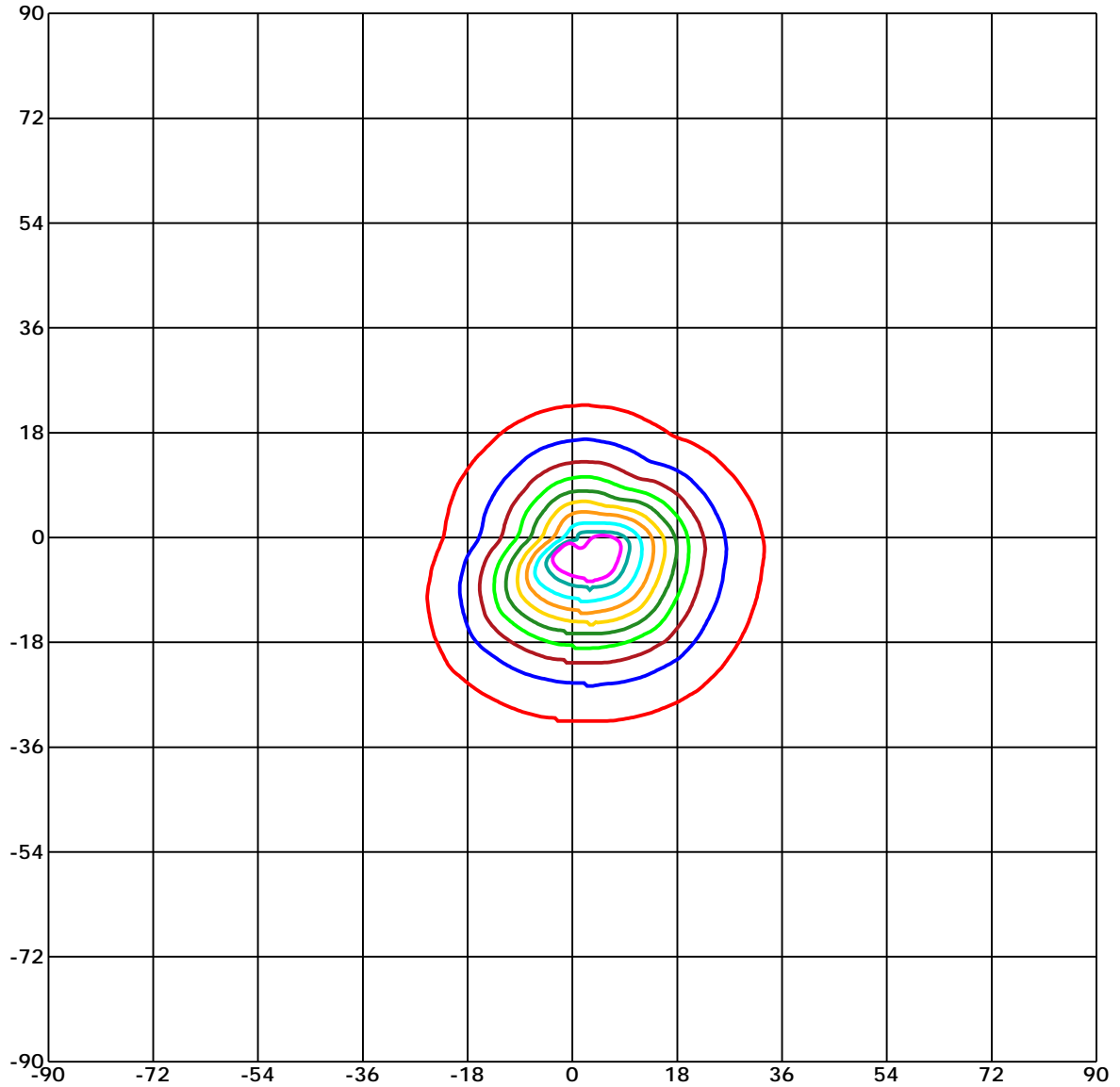
Test Distance: 6.031 m

Remarks:

Report No.:

Test Time: 2021/5/22 17:05:53

ISOCANDELA DIAGRAM (RECTANGULAR)



Unit of intensity:cd Imax(100%): 2855.859 cd

- | | |
|---------------------|---------------------|
| — 2713.066(95%Imax) | — 1427.93(50%Imax) |
| — 2570.273(90%Imax) | — 1142.344(40%Imax) |
| — 2284.688(80%Imax) | — 856.758(30%Imax) |
| — 1999.102(70%Imax) | — 571.172(20%Imax) |
| — 1713.516(60%Imax) | — 285.586(10%Imax) |

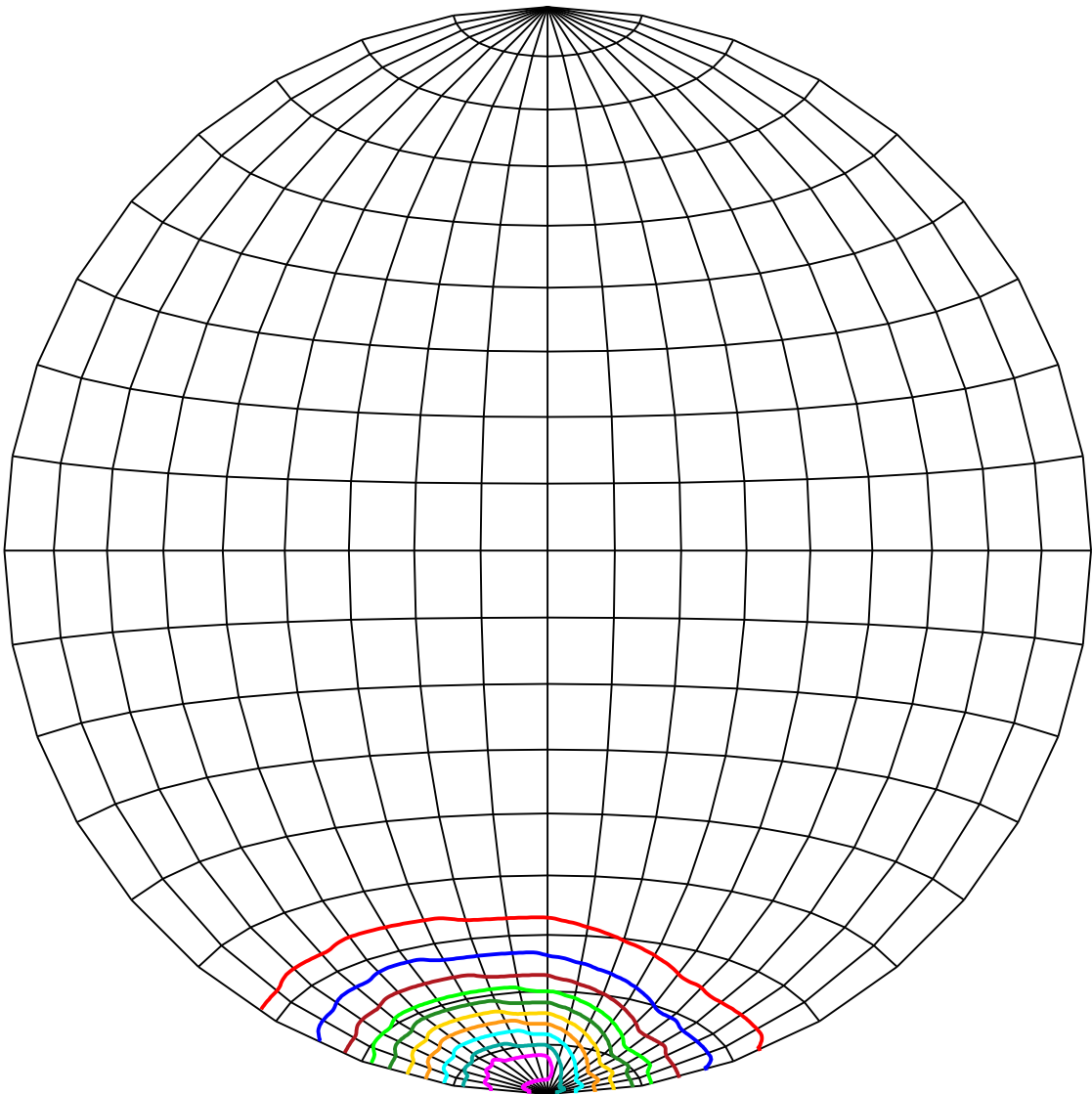
C Range: 0 - 360 Deg
 C Interval: 45.0 Deg
 Test Speed: High
 Temperature:
 Operators:
 Test Date: 2021/5/22 17:05:53

G Range: 0 - 90 Deg
 G Interval: 1.0 Deg
 Test System: Huipu CPM-1800B Goniophotometer
 Humidity:
 Test Distance: 6.031 m
 Remarks:

Report No.:

Test Time: 2021/5/22 17:05:53

ISOCANDELA DIAGRAM (SPHERE)



Unit of intensity:cd I_{max}(100%): 2855.859 cd

— 2713.066(95%I _{max})	— 1427.93(50%I _{max})
— 2570.273(90%I _{max})	— 1142.344(40%I _{max})
— 2284.688(80%I _{max})	— 856.758(30%I _{max})
— 1999.102(70%I _{max})	— 571.172(20%I _{max})
— 1713.516(60%I _{max})	— 285.586(10%I _{max})

C Range: 0 - 360 Deg

C Interval: 45.0 Deg

Test Speed: High

Temperature:

Operators:

Test Date: 2021/5/22 17:05:53

G Range: 0 - 90 Deg

G Interval: 1.0 Deg

Test System: Huipu CPM-1800B Goniophotometer

Humidity:

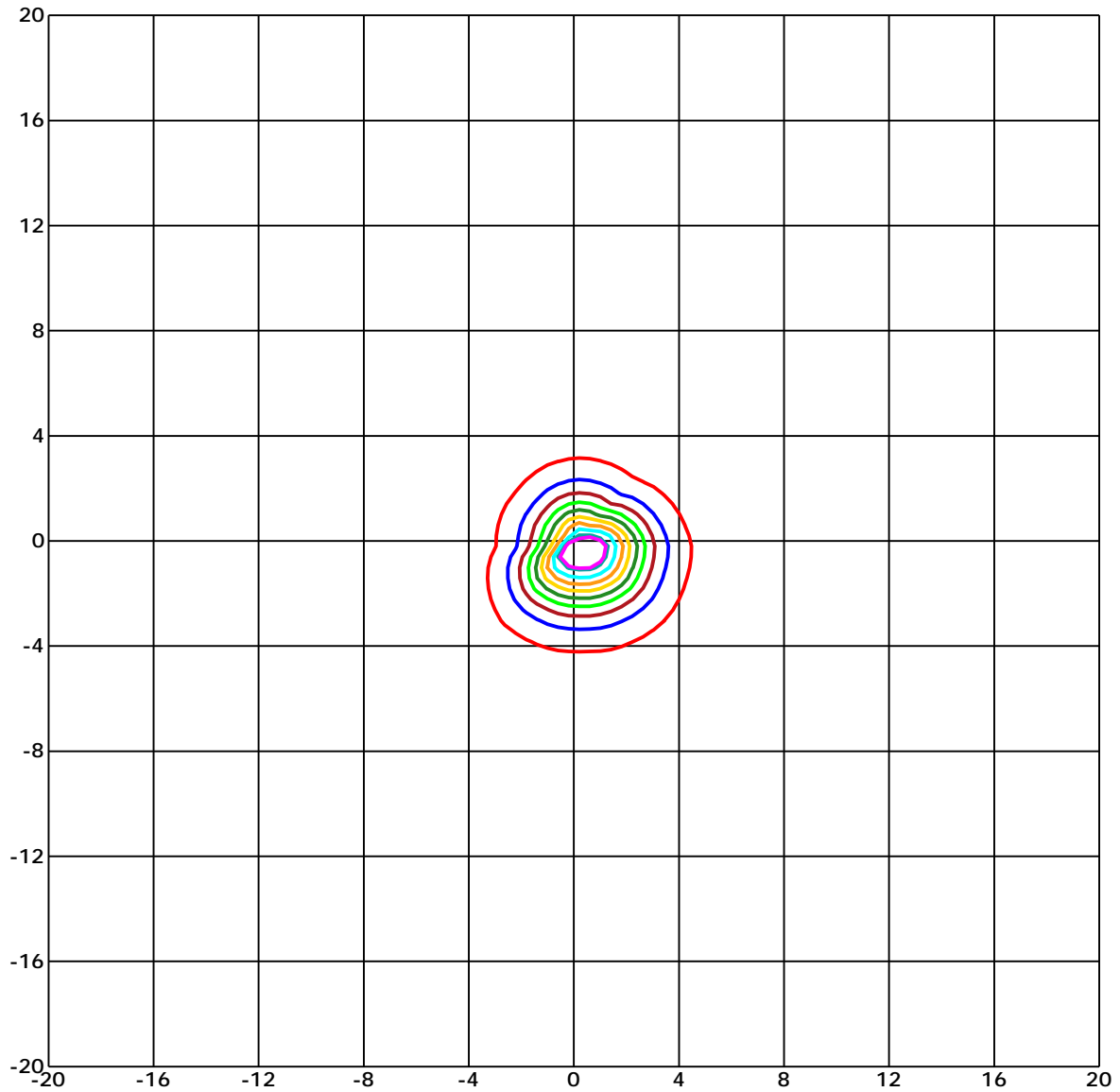
Test Distance: 6.031 m

Remarks:

Report No.:

Test Time: 2021/5/22 17:05:53

ISOLX DIAGRAM



Unit of illumination: lx Height of plane: 8.0(m)/26.25(ft)

- | | |
|-------------------------------|-------------------------------|
| — 40.434(1%E _{max}) | — 21.975(1%E _{max}) |
| — 39.555(1%E _{max}) | — 17.58(1%E _{max}) |
| — 35.16(1%E _{max}) | — 13.185(0%E _{max}) |
| — 30.765(1%E _{max}) | — 8.79(0%E _{max}) |
| — 26.37(1%E _{max}) | — 4.395(0%E _{max}) |

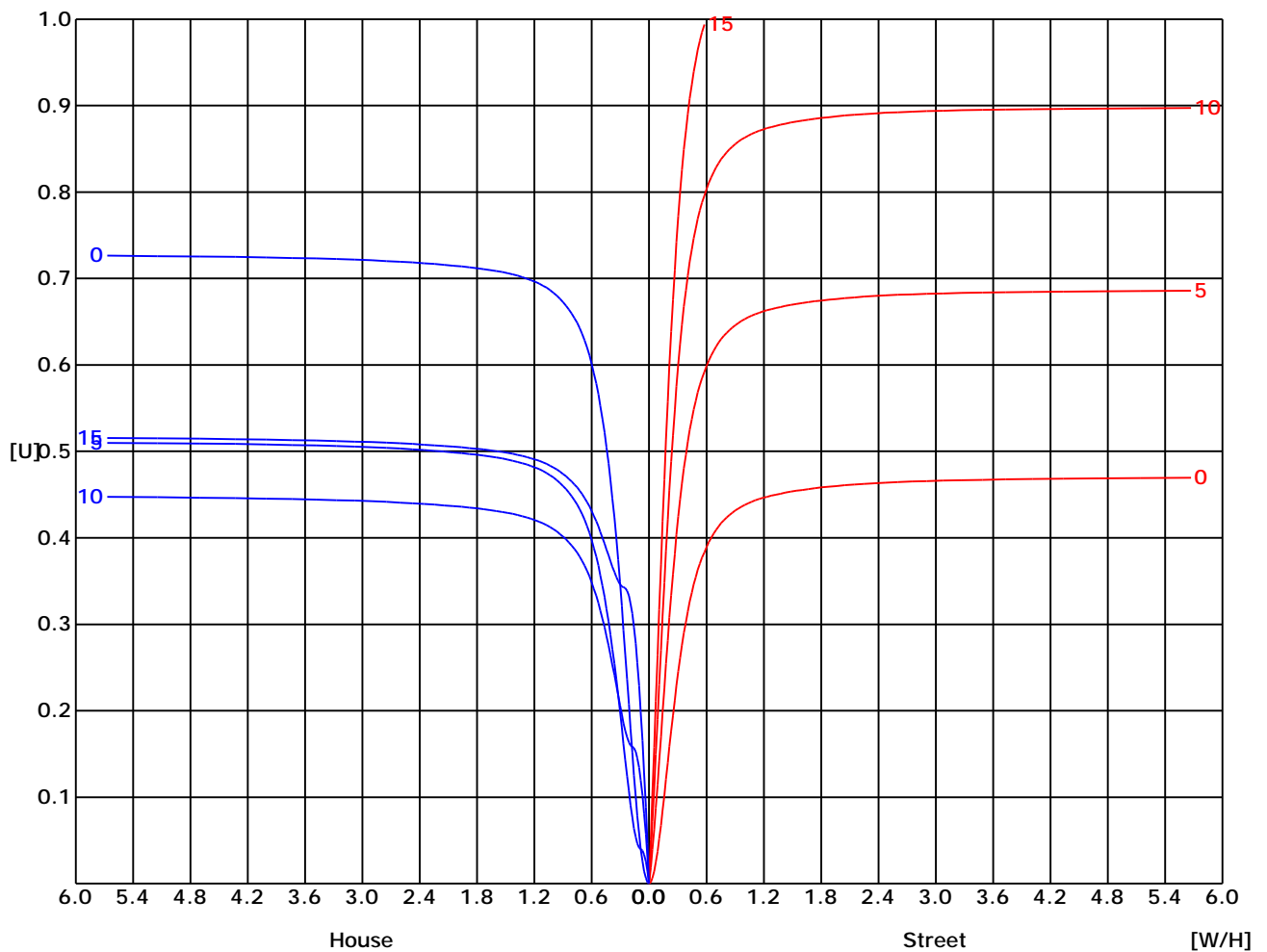
C Range: 0 - 360 Deg
 C Interval: 45.0 Deg
 Test Speed: High
 Temperature:
 Operators:
 Test Date: 2021/5/22 17:05:53

G Range: 0 - 90 Deg
 G Interval: 1.0 Deg
 Test System: Huipu CPM-1800B Goniophotometer
 Humidity:
 Test Distance: 6.031 m
 Remarks:

Report No.:

Test Time: 2021/5/22 17:05:53

UTILIZATION FACTOR DIAGRAM (ROAD)



C Range: 0 - 360 Deg
 C Interval: 45.0 Deg
 Test Speed: High
 Temperature:
 Operators:
 Test Date: 2021/5/22 17:05:53

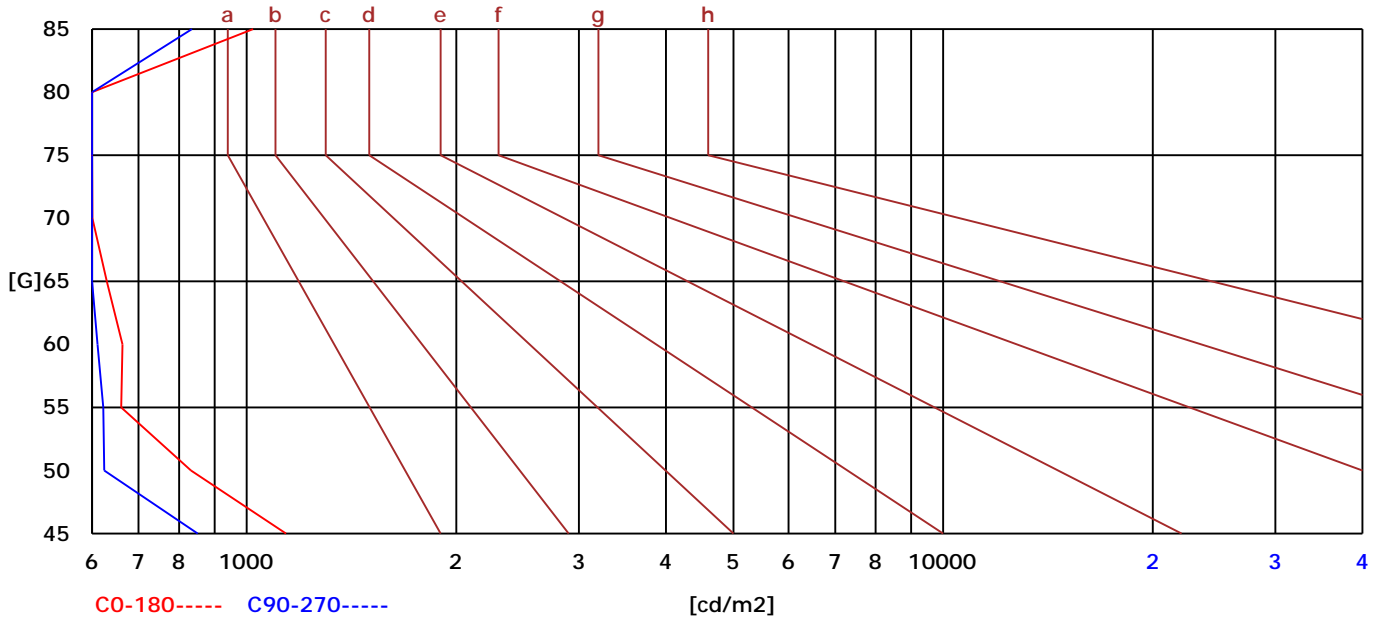
G Range: 0 - 90 Deg
 G Interval: 1.0 Deg
 Test System: Huipu CPM-1800B Goniophotometer
 Humidity:
 Test Distance: 6.031 m
 Remarks:

Report No.:

Test Time: 2021/5/22 17:05:53

BRIGHT LIMIT DIAGRAM

C/G	45	50	55	60	65	70	75	80	85
C0	1139	832	661	664	630	601	464	597	1022
C90	851	625	623	611	529	346	383	463	835
Dazzle	Quality	Illuminance	---	---	---	---	---	---	---
1.15	A	2000	1000	500	<=300				
1.5	B		2000	1000	500	<=300			
1.85	C			2000	1000	500	<=300		
2.2	D				2000	1000	500	<=300	
2.55	E					2000	1000	500	<=300
---	---	a	b	c	d	e	f	g	h



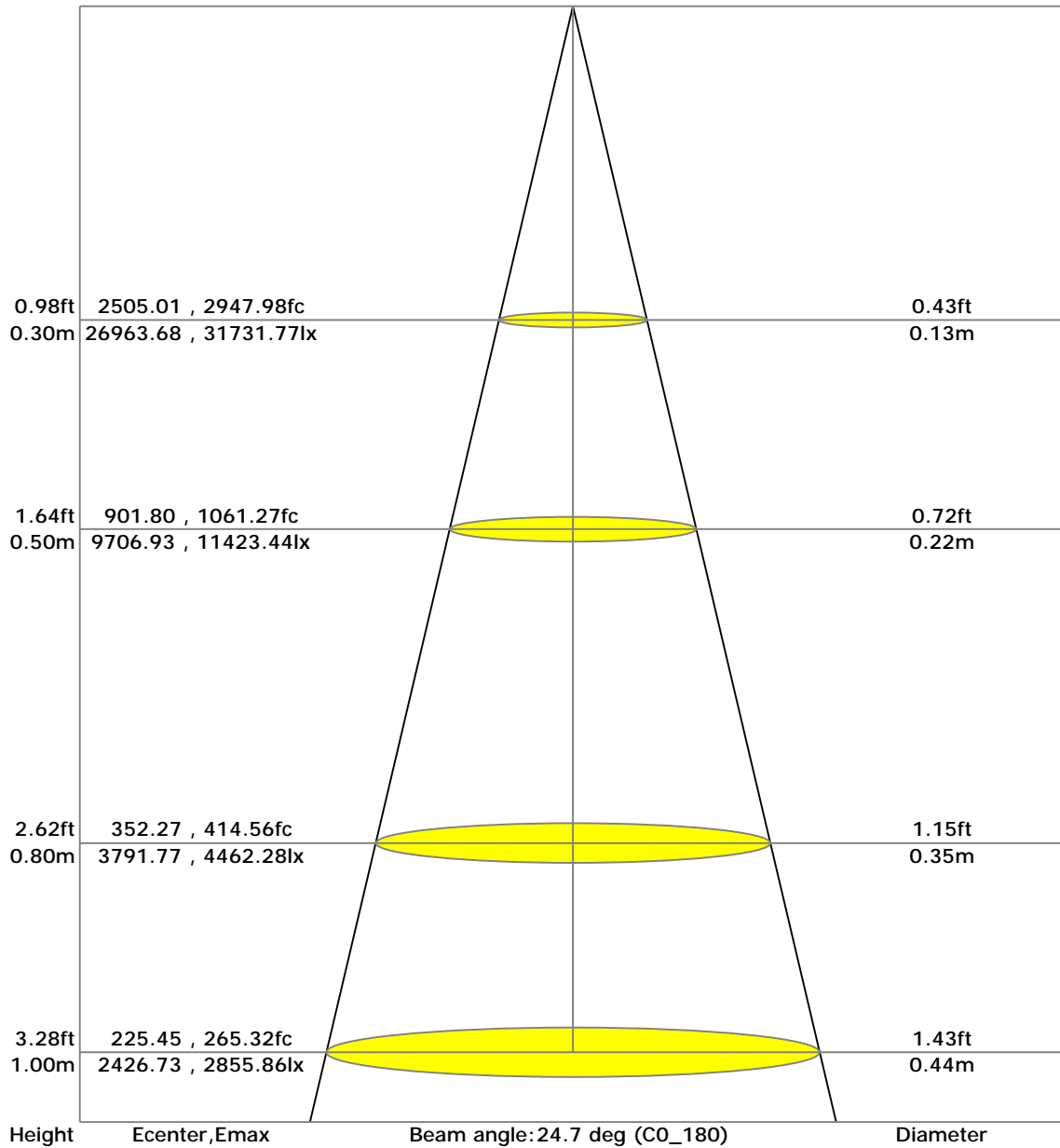
C Range: 0 - 360 Deg
 C Interval: 45.0 Deg
 Test Speed: High
 Temperature:
 Operators:
 Test Date: 2021/5/22 17:05:53

G Range: 0 - 90 Deg
 G Interval: 1.0 Deg
 Test System: Huipu CPM-1800B Goniophotometer
 Humidity:
 Test Distance: 6.031 m
 Remarks:

Report No.:

Test Time: 2021/5/22 17:05:53

LX-DISTANCE DIAGRAM



C Range: 0 - 360 Deg
 C Interval: 45.0 Deg
 Test Speed: High
 Temperature:
 Operators:
 Test Date: 2021/5/22 17:05:53

G Range: 0 - 90 Deg
 G Interval: 1.0 Deg
 Test System: Huipu CPM-1800B Goniophotometer
 Humidity:
 Test Distance: 6.031 m
 Remarks:

Report No.:

Test Time: 2021/5/22 17:05:53

UGR(Unified Glare Rating) TABLE

RHOCC	70	70	50	50	30	70	70	50	50	30
RHOW	70	70	50	50	30	70	70	50	50	30
RHOF	20	20	20	20	20	20	20	20	20	20
Room Size X Y	Viewed Endwise					Viewed Crosswise				
2H 2H	7.40	7.45	7.60	7.64	7.88	4.95	5.01	5.15	5.19	5.44
3H	7.42	7.47	7.62	7.67	7.91	5.05	5.10	5.25	5.30	5.54
4H	7.41	7.47	7.62	7.66	7.91	5.06	5.12	5.27	5.32	5.57
6H	7.40	7.45	7.61	7.65	7.91	5.06	5.12	5.28	5.32	5.57
8H	7.39	7.45	7.61	7.65	7.90	5.05	5.11	5.27	5.32	5.57
12H	7.38	7.44	7.60	7.64	7.90	5.04	5.10	5.27	5.31	5.56
4H 2H	8.76	8.82	8.97	9.02	9.27	6.36	6.41	6.57	6.61	6.86
3H	8.85	8.91	9.08	9.12	9.37	6.55	6.60	6.77	6.81	7.06
4H	8.87	8.92	9.10	9.14	9.40	6.61	6.67	6.84	6.88	7.14
6H	8.87	8.93	9.11	9.15	9.41	6.66	6.72	6.90	6.94	7.20
8H	8.87	8.92	9.11	9.15	9.42	6.67	6.73	6.91	6.95	7.22
12H	8.86	8.91	9.11	9.15	9.42	6.67	6.72	6.92	6.95	7.22
8H 4H	9.48	9.54	9.70	9.74	9.99	7.03	7.09	7.25	7.29	7.55
6H	9.89	9.94	10.15	10.18	10.46	7.75	7.81	8.01	8.04	8.32
8H	9.92	9.97	10.18	10.21	10.49	7.83	7.88	8.09	8.12	8.40
12H	9.94	9.99	10.21	10.24	10.52	7.88	7.93	8.15	8.19	8.47
12H 4H	10.18	10.23	10.43	10.47	10.74	8.11	8.17	8.36	8.40	8.67
6H	10.34	10.39	10.60	10.63	10.91	8.40	8.45	8.66	8.70	8.98

C Range: 0 - 360 Deg

C Interval: 45.0 Deg

Test Speed: High

Temperature:

Operators:

Test Date: 2021/5/22 17:05:53

G Range: 0 - 90 Deg

G Interval: 1.0 Deg

Test System: Huipu CPM-1800B Goniophotometer

Humidity:

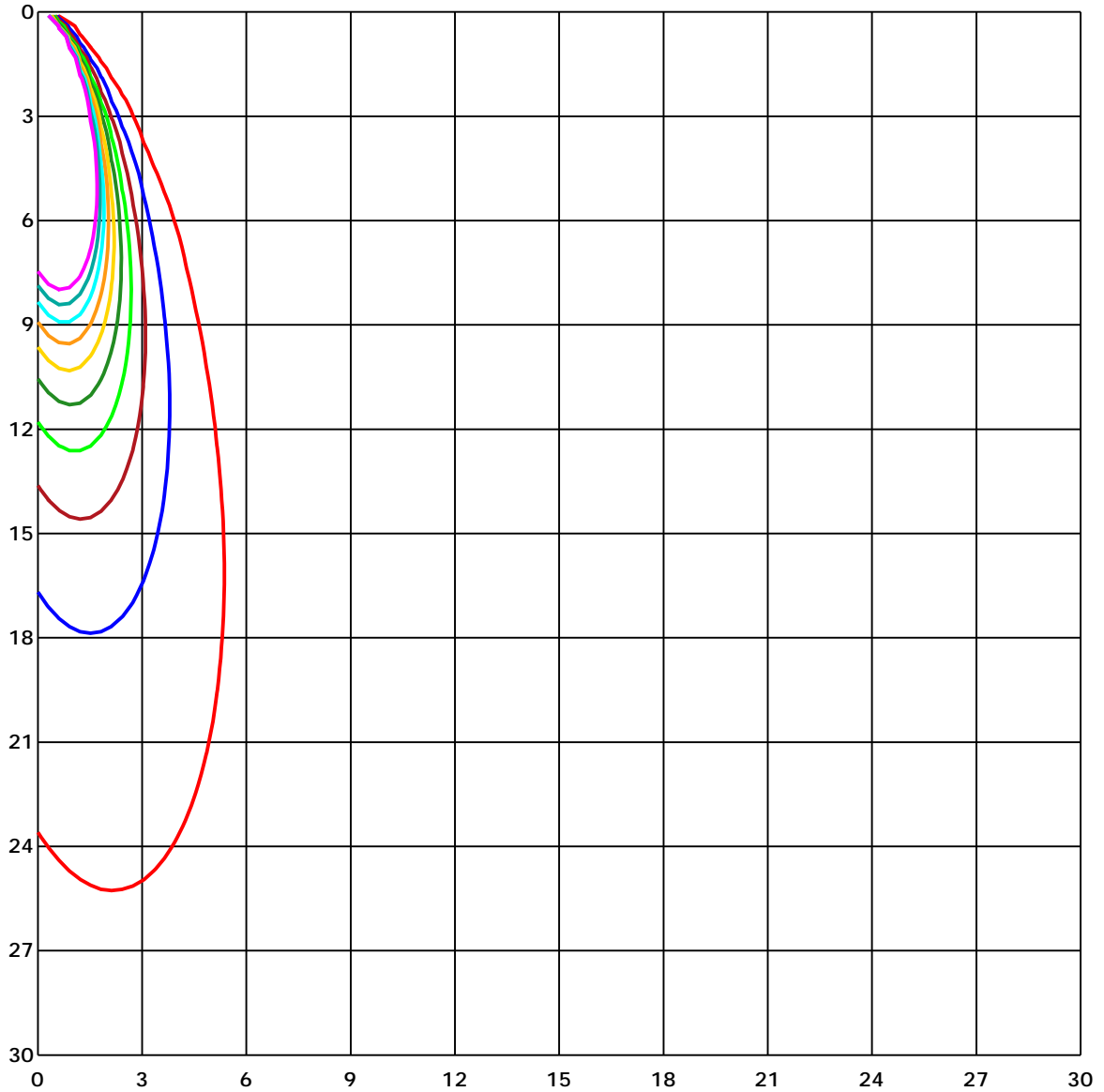
Test Distance: 6.031 m

Remarks:

Report No.:

Test Time: 2021/5/22 17:05:53

SPACE ISOLX DIAGRAM



Unit of illumination: lx

- | | |
|----------|----------|
| — 43.608 | — 21.804 |
| — 39.248 | — 17.443 |
| — 34.887 | — 13.083 |
| — 30.526 | — 8.722 |
| — 26.165 | — 4.361 |

C Range: 0 - 360 Deg

C Interval: 45.0 Deg

Test Speed: High

Temperature:

Operators:

Test Date: 2021/5/22 17:05:53

G Range: 0 - 90 Deg

G Interval: 1.0 Deg

Test System: Huipu CPM-1800B Goniophotometer

Humidity:

Test Distance: 6.031 m

Remarks:

Report No.:

Test Time: 2021/5/22 17:05:53

LUMINOUS DISTRIBUTION INTENSITY DATA

GammaC	C0	C45	C90	C135	C180	C225	C270	C315	C360	
G0	2426.73	2732.37	2602.81	2413.96	2426.73	2732.37	2602.81	2413.96	2426.73	
G1	2553.46	2647.59	2484.13	2274.37	2287.24	2788.5	2699.17	2538.11	2553.46	
G2	2658.65	2540.69	2351.44	2128.73	2138.48	2817.92	2770.38	2646.39	2658.65	
G3	2740.85	2415.17	2206.64	1977.16	1983.78	2818.0	2810.61	2734.77	2740.85	
G4	2795.19	2276.44	2056.46	1825.01	1830.72	2793.12	2820.76	2797.3	2795.19	
G5	2818.54	2129.75	1902.16	1674.5	1676.43	2747.36	2800.14	2840.22	2818.54	
G6	2811.56	1975.93	1750.74	1525.45	1531.99	2671.27	2750.71	2855.86	2811.56	
G7	2776.46	1821.89	1602.88	1383.92	1394.07	2565.97	2673.23	2840.87	2776.46	
G8	2714.55	1672.9	1461.18	1254.39	1263.82	2447.79	2572.3	2796.94	2714.55	
G9	2626.89	1527.52	1326.63	1131.64	1143.17	2318.67	2456.56	2722.44	2626.89	
G10	2519.52	1390.18	1200.2	1017.02	1031.5	2179.43	2322.78	2625.95	2519.52	
G11	2395.2	1258.8	1082.86	912.23	925.55	2033.87	2182.81	2510.79	2395.2	
G12	2256.87	1137.16	974.07	817.41	831.6	1889.18	2034.05	2380.72	2256.87	
G13	2112.11	1024.7	873.9	732.08	746.66	1744.63	1886.48	2242.18	2112.11	
G14	1962.79	920.45	785.84	656.53	672.1	1602.48	1735.94	2100.61	1962.79	
G15	1810.17	827.19	704.73	587.06	604.08	1468.09	1589.68	1954.97	1810.17	
G16	1659.92	741.03	631.65	524.86	542.39	1338.78	1449.9	1804.46	1659.92	
G17	1515.7	664.53	566.29	470.48	487.14	1214.82	1316.37	1656.86	1515.7	
G18	1378.24	593.83	506.35	419.27	437.31	1095.48	1192.85	1514.68	1378.24	
G19	1249.16	530.5	453.53	374.86	391.45	985.45	1075.33	1377.04	1249.16	
G20	1121.74	472.88	403.59	332.49	350.16	884.7	964.65	1248.65	1121.74	
G21	1007.5	420.65	359.91	294.29	310.95	794.46	864.8	1128.36	1007.5	
G22	901.54	374.5	319.65	259.88	276.33	713.53	775.65	1018.3	901.54	
G23	807.52	331.18	283.24	226.42	241.95	640.24	694.25	916.09	807.52	
G24	720.91	292.95	247.7	194.6	209.11	573.57	620.3	821.67	720.91	
G25	645.11	256.36	217.0	170.52	181.9	516.02	554.65	738.33	645.11	
G26	575.89	225.0	189.03	151.38	162.48	461.46	495.62	662.1	575.89	
G27	516.28	196.45	166.04	136.14	146.18	412.72	441.93	592.66	516.28	
G28	460.3	170.08	148.22	122.8	132.94	366.93	395.45	529.74	460.3	
G29	410.4	150.58	134.51	113.63	121.34	327.14	359.04	473.72	410.4	
G30	370.6	134.54	122.61	104.03	111.19	290.98	325.61	423.67	370.6	
G31	336.41	121.85	113.81	95.12	103.04	255.34	293.02	377.92	336.41	
G32	303.97	111.77	105.12	87.8	95.04	224.2	260.1	336.81	303.97	
G33	273.09	102.79	97.3	79.69	86.24	195.58	231.15	299.71	273.09	
G34	242.32	94.97	90.06	69.33	76.06	171.86	200.85	265.74	242.32	
G35	214.6	88.2	80.86	60.52	66.24	150.88	174.55	232.5	214.6	
G36	187.47	80.49	70.96	53.9	59.91	135.85	152.88	203.03	187.47	

C Range: 0 - 360 Deg

C Interval: 45.0 Deg

Test Speed: High

Temperature:

Operators:

Test Date: 2021/5/22 17:05:53

G Range: 0 - 90 Deg

G Interval: 1.0 Deg

Test System: Huipu CPM-1800B Goniophotometer

Humidity:

Test Distance: 6.031 m

Remarks:

Report No.:

Test Time: 2021/5/22 17:05:53

LUMINOUS DISTRIBUTION INTENSITY DATA(Continue 1)

GammaC	C0	C45	C90	C135	C180	C225	C270	C315	C360	
G37	163.97	71.55	62.16	48.74	53.5	124.5	136.22	176.52	163.97	
G38	145.38	61.94	56.09	44.52	48.89	113.56	123.3	156.22	145.38	
G39	130.87	55.21	51.25	39.28	45.94	104.46	112.39	139.74	130.87	
G40	119.3	50.05	46.34	36.48	40.56	96.46	102.97	126.91	119.3	
G41	109.12	45.76	42.52	33.61	36.92	89.3	94.46	115.7	109.12	
G42	100.94	41.47	39.14	31.17	35.79	80.46	88.31	105.77	100.94	
G43	93.15	37.94	35.86	28.3	31.61	71.11	80.82	98.43	93.15	
G44	86.42	34.95	33.94	26.19	30.41	61.83	70.75	92.68	86.42	
G45	78.24	32.23	30.88	24.08	26.59	55.54	60.78	83.55	78.24	
G46	68.74	29.57	29.24	20.55	24.77	50.56	55.47	74.2	68.74	
G47	59.83	27.35	25.93	19.17	22.51	46.27	48.56	64.53	59.83	
G48	53.58	25.72	25.32	18.7	20.59	41.03	44.38	57.61	53.58	
G49	48.56	23.1	21.79	17.35	18.91	38.7	40.23	53.94	48.56	
G50	43.9	21.39	20.37	16.08	17.82	35.61	36.81	47.72	43.9	
G51	38.66	19.64	18.51	15.42	17.13	32.99	33.9	43.9	38.66	
G52	36.41	17.82	17.68	13.49	16.8	30.26	31.5	39.68	36.41	
G53	33.5	16.91	16.99	14.84	16.37	28.04	28.84	36.48	33.5	
G54	30.88	15.42	16.88	14.51	15.71	26.15	26.81	33.68	30.88	
G55	28.01	15.17	17.75	14.29	15.31	24.01	24.66	31.24	28.01	
G56	26.01	14.73	16.37	13.89	15.09	22.15	22.77	28.81	26.01	
G57	24.08	14.33	15.86	13.68	14.73	20.55	21.61	26.7	24.08	
G58	21.71	15.06	15.39	13.39	14.33	18.99	19.82	24.84	21.71	
G59	21.35	13.75	14.91	12.73	13.86	18.04	18.26	22.88	21.35	
G60	18.59	13.28	14.04	12.22	13.49	15.71	15.93	21.39	18.59	
G61	17.24	12.91	13.97	11.31	12.8	15.75	16.66	19.64	17.24	
G62	16.04	12.48	12.44	10.62	12.04	16.77	16.0	18.59	16.04	
G63	16.59	13.39	12.88	10.33	11.42	14.8	15.57	17.75	16.59	
G64	14.73	12.69	12.18	8.62	9.6	15.93	13.57	17.6	14.73	
G65	14.55	10.66	11.78	8.95	10.44	15.35	14.99	17.2	14.55	
G66	15.82	10.04	11.31	8.37	9.78	14.91	14.59	16.99	15.82	
G67	14.04	9.57	10.69	7.42	8.58	14.55	14.04	16.55	14.04	
G68	14.88	10.15	9.75	6.44	7.89	14.04	13.57	16.19	14.88	
G69	13.31	8.4	8.62	5.57	6.8	13.31	13.17	15.71	13.31	
G70	12.91	8.22	7.78	4.73	6.29	12.51	12.59	15.06	12.91	
G71	12.4	6.87	6.84	4.69	5.78	11.89	11.78	13.09	12.4	
G72	11.89	5.97	6.33	4.29	5.57	11.38	10.73	12.33	11.89	
G73	11.09	5.6	5.93	3.86	5.27	10.84	10.22	13.17	11.09	

C Range: 0 - 360 Deg

C Interval: 45.0 Deg

Test Speed: High

Temperature:

Operators:

Test Date: 2021/5/22 17:05:53

G Range: 0 - 90 Deg

G Interval: 1.0 Deg

Test System: Huipu CPM-1800B Goniophotometer

Humidity:

Test Distance: 6.031 m

Remarks:

Report No.:

Test Time: 2021/5/22 17:05:53

LUMINOUS DISTRIBUTION INTENSITY DATA(Continue 2)

Gamma\C	C0	C45	C90	C135	C180	C225	C270	C315	C360	
G74	10.55	5.13	5.38	3.78	4.73	10.58	9.75	12.44	10.55	
G75	10.08	4.8	5.09	3.96	4.51	9.06	9.35	10.51	10.08	
G76	8.73	4.47	4.95	3.6	4.18	8.18	8.4	11.42	8.73	
G77	8.98	4.33	4.36	3.53	4.0	7.27	7.35	10.66	8.98	
G78	8.51	4.11	4.62	3.27	3.86	6.66	6.37	9.86	8.51	
G79	7.24	4.07	5.49	3.16	3.71	6.0	5.71	8.58	7.24	
G80	6.69	4.15	4.15	3.22	3.71	6.98	5.2	6.18	6.69	
G81	6.09	4.07	4.0	3.27	3.56	5.35	5.02	5.53	6.09	
G82	5.49	3.67	3.82	3.42	3.64	5.06	4.4	6.55	5.49	
G83	5.16	3.71	4.0	3.22	3.47	4.98	4.31	6.15	5.16	
G84	4.75	3.49	3.96	3.02	3.31	4.66	4.22	5.75	4.75	
G85	4.33	3.56	3.96	2.91	3.42	4.47	4.04	5.49	4.33	
G86	4.11	3.38	3.86	3.13	3.2	4.62	3.93	5.35	4.11	
G87	4.15	3.75	3.96	3.35	3.53	4.33	3.78	5.2	4.15	
G88	3.67	4.11	4.0	2.84	3.89	4.62	3.86	4.44	3.67	
G89	4.15	4.34	3.78	3.03	3.67	2.73	3.75	4.33	4.15	
G90	3.61	4.57	0.0	3.23	9.17	2.73	4.1	4.33	3.61	

C Range: 0 - 360 Deg
 C Interval: 45.0 Deg
 Test Speed: High
 Temperature:
 Operators:
 Test Date: 2021/5/22 17:05:53

G Range: 0 - 90 Deg
 G Interval: 1.0 Deg
 Test System: Huipu CPM-1800B Goniophotometer
 Humidity:
 Test Distance: 6.031 m
 Remarks: