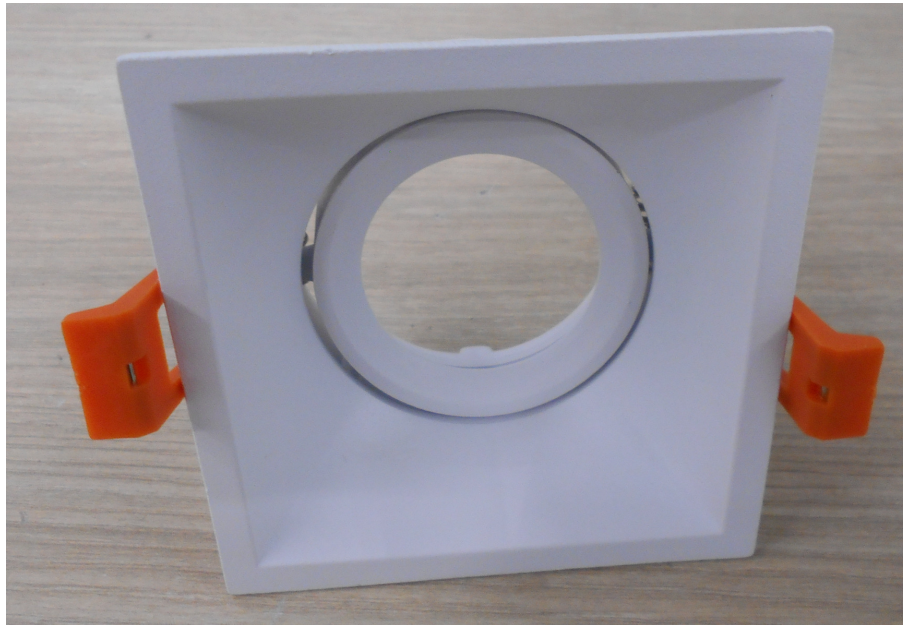


LUMINARIA LED

MARCA DRITE, REFERENCIA OJM248
50 W MÁX. (85-277) V BASE GU10-GX5.3
BOMBILLA LED REF. BOL1019 3000 K 530 Lm



Light Output Ratio:	100.0%	
Luminaire Power:	6.521 W	
SHR Nominal:	0.75	Calculated using the TM5
SHR Maximum:	0.75	fine grid method.

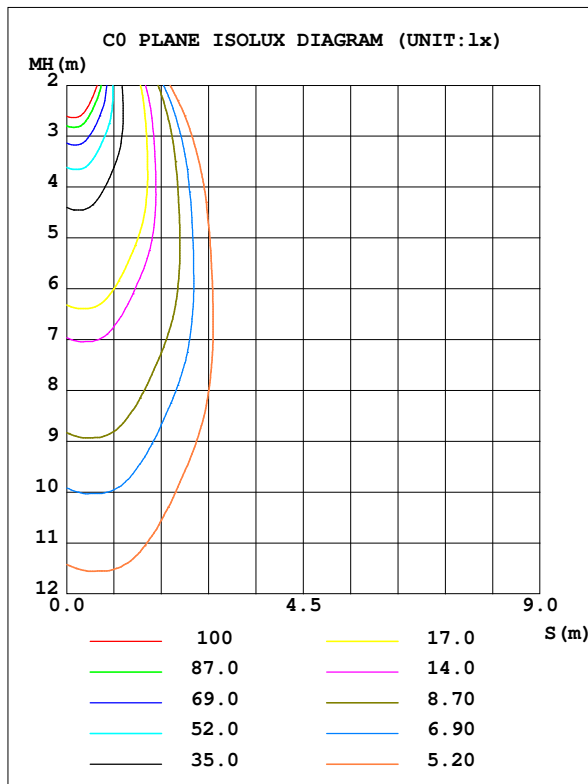
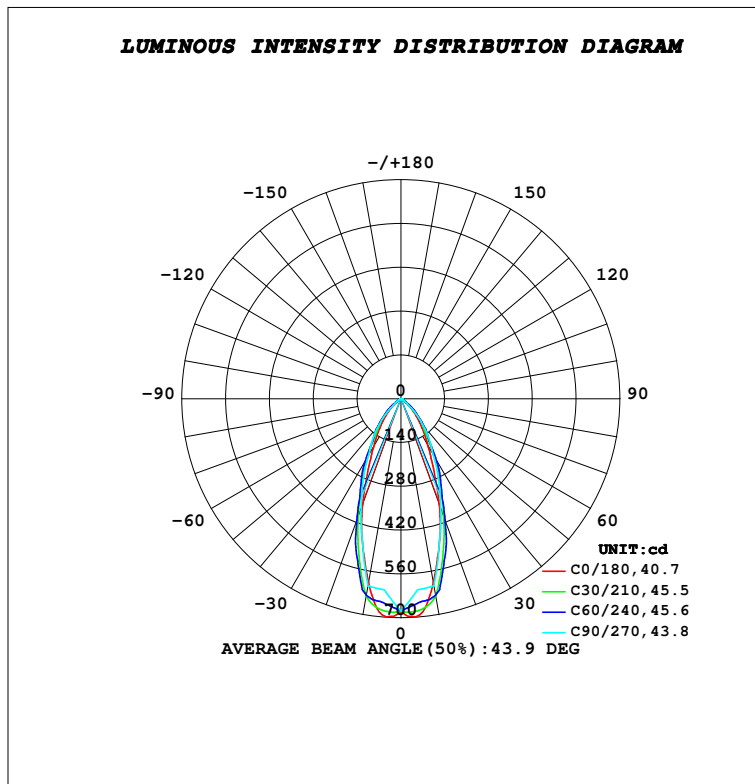
C Range: 0 - 90DEG
C Interval: 5.0DEG
Test Speed: HIGH
Temperature: 24.7DEG
Operators: JV
Test Date: 2021-08-24

γ Range: -90 - 90DEG
γ Interval: 0.5DEG
Test System: EVERFINE GO-2000H_V1 SYSTEM V2.00.417
Humidity: 59%
Test Distance: 13.200m [K=1.0000]
Remarks: LUMINARIA LED MÁX. 50 W
QTEST 22211-02

LUMINAIRE PHOTOMETRIC TEST REPORT

Test:U:120.15V I:0.0928A P:6.5214W PF:0.5846 Freq:60.00Hz Lamp Flux:516.645x1 lm		
NAME: LUMINARIA LED MÁX. 50 W	TYPE:INTERIOR	WEIGHT:NA
SPEC.:NA	DIM.: NA	SERIAL No.:NA
MFR.: DRITE	SUR.:NA	Shielding Angle:NA

DATA OF LAMP		PHOTOMETRIC DATA				Eff: 79.22 lm/W
MODEL	LED BOL1019 7 W	I _{max} (cd)	698.0	S/MH (C0/180)		0.67
NOMINAL POWER (W)	7 W	LOR (%)	100.0	S/MH (C90/270)		0.68
RATED VOLTAGE (V)	85-277	TOTAL FLUX (lm)	516.64	η UP, DN (C0-180)		0.0, 50.0
NOMINAL FLUX (lm)	516.645	CIE CLASS	DIRECT	η UP, DN (C180-360)		0.0, 50.0
LAMPS INSIDE	1	η up (%)	0.0	CIBSE SHR NOM		0.75
TEST VOLTAGE (V)	120	η down (%)	100.0	CIBSE SHR MAX		0.75



C Range: 0 - 90DEG
 C Interval: 5.0DEG
 Test Speed: HIGH
 Temperature: 24.7DEG
 Operators: JV
 Test Date: 2021-08-24

γ Range: -90 - 90DEG
 γ Interval: 0.5DEG
 Test System: EVERFINE GO-2000H_V1 SYSTEM V2.00.417
 Humidity: 59%
 Test Distance: 13.200m [K=1.0000]
 Remarks: LUMINARIA LED MÁX. 50 W
 QTEST 22211-02

ZONAL FLUX DIAGRAM

ZONAL FLUX DIAGRAM:

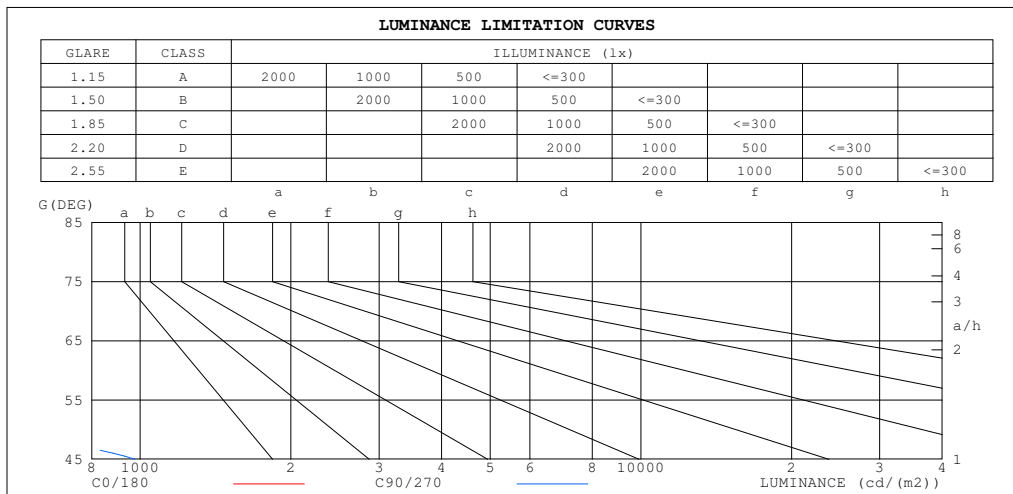
γ	C0	C45	C90	C135	C180	C225	C270	C315	γ	Φ zone	Φ total	Φ lum, lamp
10	596.3	636.1	607.6	636.1	596.3	636.1	607.6	636.1	0- 10	62.28	62.28	12.1,12.1
20	357.9	425.6	372.7	425.6	357.9	425.6	372.7	425.6	10- 20	142.7	205.0	39.7,39.7
30	173.5	216.1	206.2	216.1	173.5	216.1	206.2	216.1	20- 30	134.8	339.8	65.8,65.8
40	86.86	107.2	109.2	107.2	86.86	107.2	109.2	107.2	30- 40	94.99	434.8	84.2,84.2
50	21.28	48.65	29.90	48.65	21.28	48.65	29.90	48.65	40- 50	55.54	490.4	94.9,94.9
60	4.947	12.67	4.767	12.67	4.947	12.67	4.767	12.67	50- 60	19.05	509.4	98.6,98.6
70	2.019	2.945	1.975	2.945	2.019	2.945	1.975	2.945	60- 70	4.545	514.0	99.5,99.5
80	1.110	1.304	1.149	1.304	1.110	1.304	1.149	1.304	70- 80	1.874	515.8	99.8,99.8
90	0	0.1991	0.0536	0.1991	0	0.1991	0.0536	0.1991	80- 90	0.8014	516.6	100,100
100									90-100			
110									100-110			
120									110-120			
130									120-130			
140									130-140			
150									140-150			
160									150-160			
170									160-170			
180									170-180			
DEG	LUMINOUS INTENSITY:cd									UNIT:lm		

C Range: 0 - 90DEG
 C Interval: 5.0DEG
 Test Speed: HIGH
 Temperature:24.7DEG
 Operators:JV
 Test Date:2021-08-24

γ Range:-90 - 90DEG
 γ Interval: 0.5DEG
 Test System:EVERFINE GO-2000H_V1 SYSTEM V2.00.417
 Humidity:59%
 Test Distance:13.200m [K=1.0000]
 Remarks: LUMINARIA LED MÁX. 50 W
 QTEST 22211-02

LUMINANCE LIMITATION CURVES

Test:U:120.15V I:0.0928A P:6.5214W PF:0.5846 Freq:60.00Hz Lamp Flux:516.645x1 lm		
NAME: LUMINARIA LED MÁX. 50 W	TYPE: INTERIOR	WEIGHT: NA
SPEC.: NA	DIM.: NA	SERIAL No.: NA
MFR.: DRITE	SUR.: NA	Shielding Angle: NA



LUMINANCE cd/(m2)		
G (DEG)	C0/180	C90/270
85	58	68
80	64	66
75	64	60
70	59	58
65	70	79
60	99	95
55	127	297
50	331	465
45	770	977

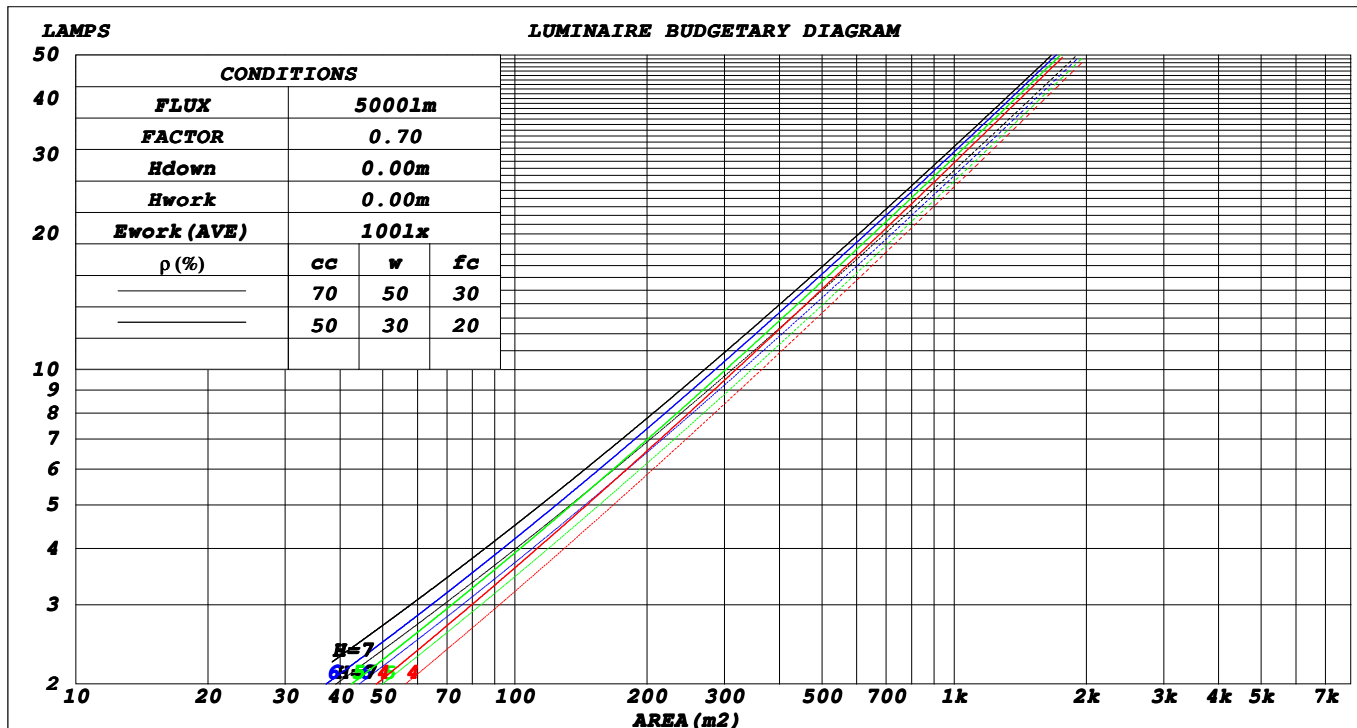
C Range: 0 - 90DEG
C Interval: 5.0DEG
Test Speed: HIGH
Temperature: 24.7DEG
Operators: JV
Test Date: 2021-08-24

γ Range: -90 - 90DEG
γ Interval: 0.5DEG
Test System: EVERFINE GO-2000H_V1 SYSTEM V2.00.417
Humidity: 59%
Test Distance: 13.200m [K=1.0000]
Remarks: LUMINARIA LED MÁX. 50 W
QTEST 22211-02

CU AND LUMINAIRE BUDGETARY ESTIMATE DIAGRAM

Test:U:120.15V I:0.0928A P:6.5214W PF:0.5846 Freq:60.00Hz Lamp Flux:516.645x1 lm		
NAME: LUMINARIA LED MÁX. 50 W	TYPE:INTERIOR	WEIGHT:NA
SPEC.:NA	DIM.: NA	SERIAL No.:NA
MFR.: DRITE	SUR.:NA	Shielding Angle:NA

ρ_{cc}	80%			70%			50%			30%			10%			0
ρ_w	50%	30%	10%	50%	30%	10%	50%	30%	10%	50%	30%	10%	50%	30%	10%	0
ρ_{fc}	20%			20%			20%			20%			20%			0
RCR	RCR:Room Cavity Ratio						Coefficients of Utilization (CU)									
0.0	1.19	1.19	1.19	1.16	1.16	1.16	1.11	1.11	1.11	1.06	1.06	1.06	1.02	1.02	1.02	.00
1.0	1.10	1.08	1.05	1.08	1.06	1.04	1.04	1.02	1.00	1.00	.99	.97	.97	.96	.95	.93
2.0	1.02	.98	.94	1.00	.97	.93	.97	.94	.91	.94	.92	.89	.91	.89	.87	.86
3.0	.95	.90	.85	.93	.89	.85	.91	.87	.83	.88	.85	.82	.86	.83	.81	.79
4.0	.88	.82	.78	.87	.82	.78	.85	.80	.77	.83	.79	.76	.81	.78	.75	.73
5.0	.82	.76	.72	.81	.76	.71	.80	.75	.71	.78	.74	.70	.76	.73	.70	.68
6.0	.77	.71	.66	.76	.70	.66	.75	.70	.66	.73	.69	.65	.72	.68	.65	.63
7.0	.72	.66	.62	.72	.66	.62	.70	.65	.61	.69	.64	.61	.68	.64	.61	.59
8.0	.68	.62	.58	.68	.62	.58	.66	.61	.57	.65	.61	.57	.64	.60	.57	.55
9.0	.64	.58	.54	.64	.58	.54	.63	.58	.54	.62	.57	.54	.61	.57	.54	.52
10.0	.61	.55	.51	.60	.55	.51	.60	.54	.51	.59	.54	.51	.58	.54	.51	.49



C Range: 0 - 90DEG
 C Interval: 5.0DEG
 Test Speed: HIGH
 Temperature:24.7DEG
 Operators:JV
 Test Date:2021-08-24

γ Range:-90 - 90DEG
 γ Interval: 0.5DEG
 Test System:EVERFINE GO-2000H_V1 SYSTEM V2.00.417
 Humidity:59%
 Test Distance:13.200m [K=1.0000]
 Remarks: LUMINARIA LED MÁX. 50 W
 QTEST 22211-02

WEC AND CCEC

Test:U:120.15V I:0.0928A P:6.5214W PF:0.5846 Freq:60.00Hz Lamp Flux:516.645x1 lm		
NAME: LUMINARIA LED MÁX. 50 W	TYPE:INTERIOR	WEIGHT:NA
SPEC.:NA	DIM.: NA	SERIAL No.:NA
MFR.: DRITE	SUR.:NA	Shielding Angle:NA

ρ_{cc}	80%			70%			50%			30%			10%			0
ρ_w	50%	30%	10%	50%	30%	10%	50%	30%	10%	50%	30%	10%	50%	30%	10%	0
ρ_{fc}	20%			20%			20%			20%			20%			0
RCR	RCR:Room Cavity Ratio						Wall Exitance Coefficients(WEC)									
0.0																
1.0	.187	.106	.034	.180	.103	.033	.168	.096	.031	.156	.090	.029	.145	.084	.027	
2.0	.180	.099	.030	.174	.096	.030	.163	.091	.028	.154	.086	.027	.144	.082	.026	
3.0	.171	.091	.027	.166	.089	.027	.157	.085	.026	.149	.081	.025	.141	.078	.024	
4.0	.163	.085	.025	.159	.083	.025	.151	.080	.024	.143	.077	.023	.136	.074	.023	
5.0	.155	.079	.023	.151	.078	.023	.144	.075	.022	.138	.073	.022	.132	.070	.021	
6.0	.147	.074	.021	.144	.073	.021	.138	.071	.021	.132	.069	.020	.127	.067	.020	
7.0	.140	.069	.020	.137	.068	.019	.132	.067	.019	.127	.065	.019	.122	.063	.019	
8.0	.134	.065	.018	.131	.065	.018	.126	.063	.018	.122	.062	.018	.118	.060	.018	
9.0	.128	.062	.017	.125	.061	.017	.121	.060	.017	.117	.059	.017	.113	.057	.017	
10.0	.122	.059	.016	.120	.058	.016	.116	.057	.016	.112	.056	.016	.109	.055	.016	

ρ_{cc}	80%			70%			50%			30%			10%			0
ρ_w	50%	30%	10%	50%	30%	10%	50%	30%	10%	50%	30%	10%	50%	30%	10%	0
ρ_{fc}	20%			20%			20%			20%			20%			0
RCR	RCR:Room Cavity Ratio						Ceiling Cavity Exitance Coefficients(CCEC)									
0.0	.190	.190	.190	.163	.163	.163	.111	.111	.111	.064	.064	.064	.020	.020	.020	
1.0	.172	.157	.144	.147	.135	.124	.101	.093	.086	.058	.054	.050	.019	.017	.016	
2.0	.157	.132	.112	.135	.114	.096	.092	.079	.067	.053	.046	.039	.017	.015	.013	
3.0	.145	.114	.088	.125	.098	.077	.086	.068	.054	.049	.040	.032	.016	.013	.010	
4.0	.136	.099	.071	.116	.086	.062	.080	.060	.044	.046	.035	.026	.015	.011	.008	
5.0	.127	.088	.058	.109	.076	.051	.075	.053	.036	.044	.031	.021	.014	.010	.007	
6.0	.120	.078	.049	.103	.068	.042	.071	.048	.030	.041	.028	.018	.013	.009	.006	
7.0	.113	.071	.041	.097	.061	.036	.067	.043	.025	.039	.025	.015	.013	.008	.005	
8.0	.108	.065	.035	.093	.056	.031	.064	.039	.022	.037	.023	.013	.012	.008	.004	
9.0	.102	.060	.031	.088	.052	.027	.061	.036	.019	.036	.021	.011	.012	.007	.004	
10.0	.098	.055	.027	.084	.048	.023	.058	.034	.017	.034	.020	.010	.011	.007	.003	

C Range: 0 - 90DEG
 C Interval: 5.0DEG
 Test Speed: HIGH
 Temperature:24.7DEG
 Operators:JV
 Test Date:2021-08-24

γ Range:-90 - 90DEG
 γ Interval: 0.5DEG
 Test System:EVERFINE GO-2000H_V1 SYSTEM V2.00.417
 Humidity:59%
 Test Distance:13.200m [K=1.0000]
 Remarks: LUMINARIA LED MÁX. 50 W
 QTEST 22211-02

UGR(Unified Glare Rating) Table

Test:U:120.15V I:0.0928A P:6.5214W PF:0.5846 Freq:60.00Hz Lamp Flux:516.645x1 lm		
NAME: LUMINARIA LED MÁX. 50 W	TYPE:INTERIOR	WEIGHT:NA
SPEC.:NA	DIM.: NA	SERIAL No.:NA
MFR.: DRITE	SUR.:NA	Shielding Angle:NA

ceiling/cavity	0.7	0.7	0.5	0.5	0.3	0.7	0.7	0.5	0.5	0.3
walls	0.5	0.3	0.5	0.3	0.3	0.5	0.3	0.5	0.3	0.3
working plane	0.2	0.2	0.2	0.2	0.2	0.2	0.2	0.2	0.2	0.2

Room dimensions		Viewed crosswise					Viewed endwise				
x = 2H	y = 2H	9.5	10.5	9.8	10.7	10.9	10.4	11.4	10.6	11.5	11.7
	3H	9.4	10.3	9.7	10.5	10.7	10.2	11.1	10.5	11.3	11.5
	4H	9.3	10.2	9.6	10.4	10.6	10.1	11.0	10.4	11.2	11.5
	6H	9.3	10.1	9.6	10.3	10.6	10.1	10.9	10.4	11.1	11.4
	8H	9.2	10.0	9.5	10.3	10.5	10.0	10.8	10.3	11.1	11.3
	12H	9.2	9.9	9.5	10.2	10.5	10.0	10.7	10.3	11.0	11.3
4H	2H	9.4	10.3	9.7	10.5	10.8	10.2	11.1	10.5	11.3	11.5
	3H	9.3	10.1	9.6	10.3	10.6	10.1	10.8	10.4	11.1	11.4
	4H	9.3	9.9	9.6	10.2	10.6	10.0	10.7	10.4	11.0	11.3
	6H	9.2	9.8	9.6	10.2	10.5	10.0	10.6	10.3	10.9	11.2
	8H	9.2	9.8	9.6	10.1	10.5	9.9	10.5	10.3	10.8	11.2
	12H	9.2	9.7	9.6	10.1	10.4	9.9	10.4	10.3	10.8	11.2
8H	4H	9.2	9.7	9.5	10.1	10.4	9.9	10.5	10.3	10.8	11.2
	6H	9.1	9.6	9.6	10.0	10.4	9.9	10.3	10.3	10.7	11.1
	8H	9.1	9.5	9.6	9.9	10.4	9.8	10.2	10.3	10.7	11.1
	12H	9.1	9.5	9.6	9.9	10.4	9.8	10.2	10.3	10.6	11.1
12H	4H	9.1	9.6	9.5	10.0	10.4	9.9	10.4	10.3	10.7	11.1
	6H	9.1	9.5	9.5	9.9	10.4	9.8	10.2	10.3	10.6	11.1
	8H	9.1	9.4	9.6	9.9	10.3	9.8	10.2	10.3	10.6	11.1

Variations with the observer position at spacings:

S = 1.0H	+ 2.4 / - 6.6	+ 2.1 / - 5.2
1.5H	+ 2.4 / - 6.1	+ 2.4 / - 4.3
2.0H	+ 4.7 / - 6.3	+ 4.5 / - 7.6

CIE Pub.117, 516.6 lm Total Lamp Luminous Flux Correct (8log(F/F0) = -2.3)
 Area: 0.1 m2

C Range: 0 - 90DEG
 C Interval: 5.0DEG
 Test Speed: HIGH
 Temperature:24.7DEG
 Operators:JV
 Test Date:2021-08-24

γ Range:-90 - 90DEG
 γ Interval: 0.5DEG
 Test System:EVERFINE GO-2000H_V1 SYSTEM V2.00.417
 Humidity:59%
 Test Distance:13.200m [K=1.0000]
 Remarks: LUMINARIA LED MÁX. 50 W
 QTEST 22211-02

UTILIZATION FACTORS TABLE

Test:U:120.15V I:0.0928A P:6.5214W PF:0.5846 Freq:60.00Hz Lamp Flux:516.645x1 lm		
NAME: LUMINARIA LED MÁX. 50 W	TYPE:INTERIOR	WEIGHT:NA
SPEC.:NA	DIM.: NA	SERIAL No.:NA
MFR.: DRITE	SUR.:NA	Shielding Angle:NA

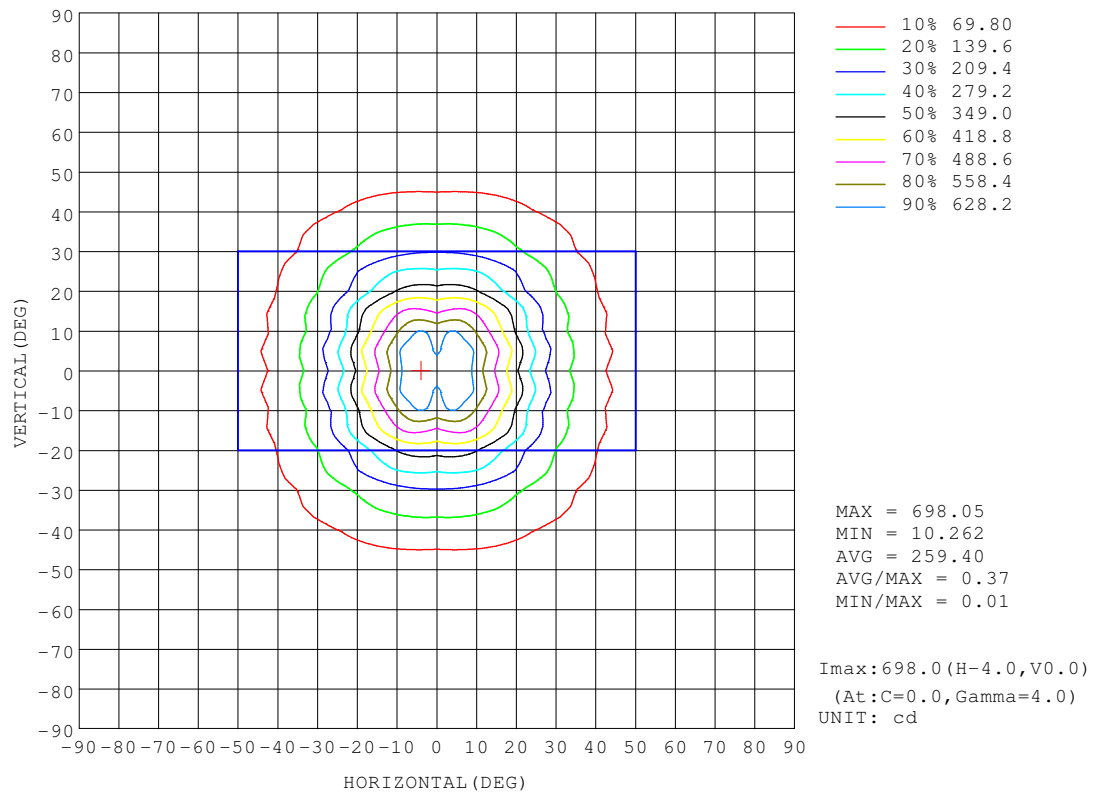
REFLECTANCE										
Ceiling	0.8	0.8	0.8	0.7	0.7	0.7	0.5	0.5	0.5	0
Walls	0.7	0.5	0.3	0.7	0.5	0.3	0.7	0.5	0.3	0
Working plane	0.2	0.2	0.2	0.2	0.2	0.2	0.2	0.2	0.2	0
ROOM INDEX	UTILIZATION FACTORS (PERCENT) $k(RI) \times RCR = 5$									
k = 0.60	81	74	70	81	74	69	80	73	69	65
0.80	90	83	79	89	83	78	88	82	78	74
1.00	95	89	85	95	89	85	93	89	84	80
1.25	100	94	90	99	94	90	97	92	89	84
1.50	103	98	94	102	97	94	100	96	93	88
2.00	107	102	99	105	101	98	103	99	96	91
2.50	109	104	101	107	103	100	104	101	98	92
3.00	111	107	104	109	105	103	105	103	100	94
4.00	113	110	107	111	108	106	107	105	103	96
5.00	114	111	109	112	110	108	108	106	105	97
ROOM INDEX	UF(total)									Direct
According to DIN EN 13032-2 2004			Suspended				SHRNOM = 1.25			

C Range: 0 - 90DEG
 C Interval: 5.0DEG
 Test Speed: HIGH
 Temperature:24.7DEG
 Operators:JV
 Test Date:2021-08-24

γ Range:-90 - 90DEG
 γ Interval: 0.5DEG
 Test System:EVERFINE GO-2000H_V1 SYSTEM V2.00.417
 Humidity:59%
 Test Distance:13.200m [K=1.0000]
 Remarks: LUMINARIA LED MÁX. 50 W
 QTEST 22211-02

ISOCANDELA DIAGRAM

Test:U:120.15V I:0.0928A P:6.5214W PF:0.5846 Freq:60.00Hz Lamp Flux:516.645x1 lm		
NAME: LUMINARIA LED MÁX. 50 W	TYPE:INTERIOR	WEIGHT:NA
SPEC.:NA	DIM.: NA	SERIAL No.:NA
MFR.: DRITE	SUR.:NA	Shielding Angle:NA

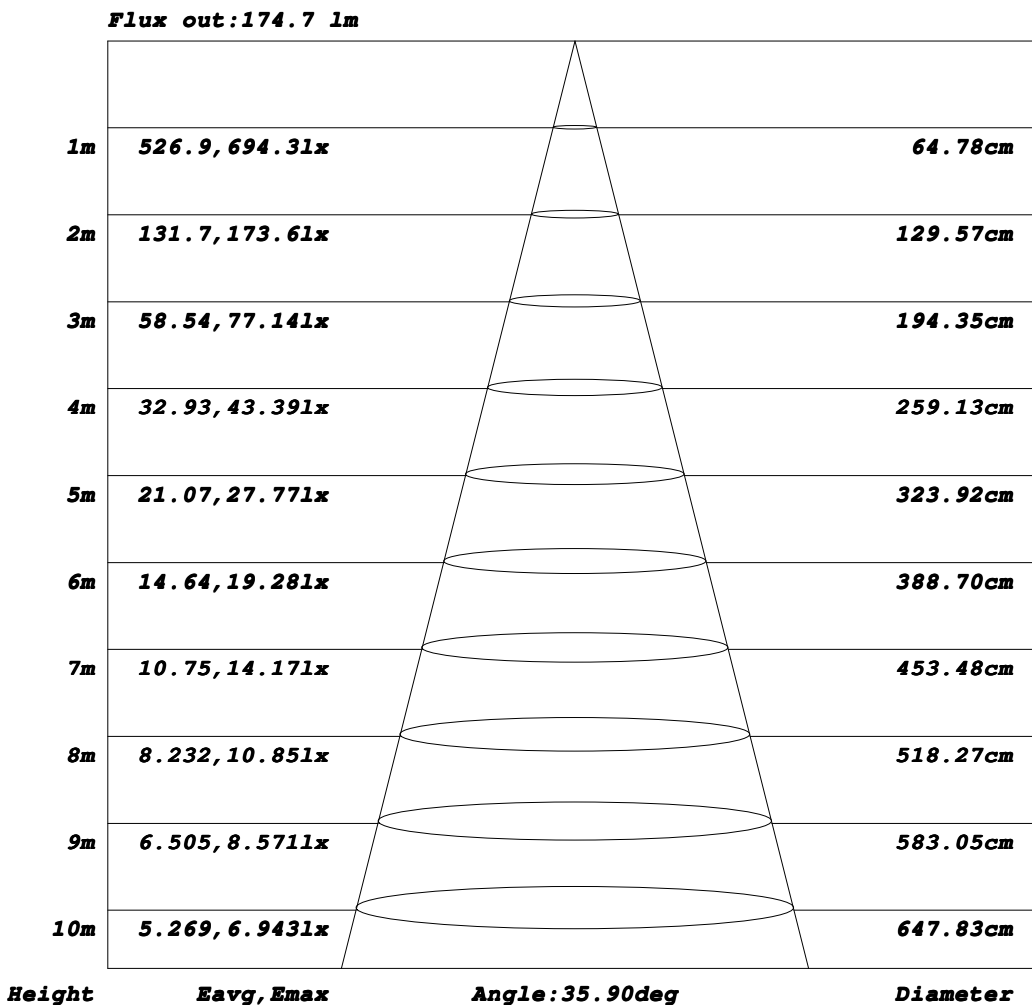


C Range: 0 - 90DEG
C Interval: 5.0DEG
Test Speed: HIGH
Temperature:24.7DEG
Operators:JV
Test Date:2021-08-24

γ Range:-90 - 90DEG
γ Interval: 0.5DEG
Test System:EVERFINE GO-2000H_V1 SYSTEM V2.00.417
Humidity:59%
Test Distance:13.200m [K=1.0000]
Remarks: LUMINARIA LED MÁX. 50 W
QTEST 22211-02

AAI Figure

Test:U:120.15V I:0.0928A P:6.5214W PF:0.5846 Freq:60.00Hz Lamp Flux:516.645x1 lm		
NAME: LUMINARIA LED MÁX. 50 W	TYPE:INTERIOR	WEIGHT:NA
SPEC.:NA	DIM.: NA	SERIAL No.:NA
MFR.: DRITE	SUR.:NA	Shielding Angle:NA



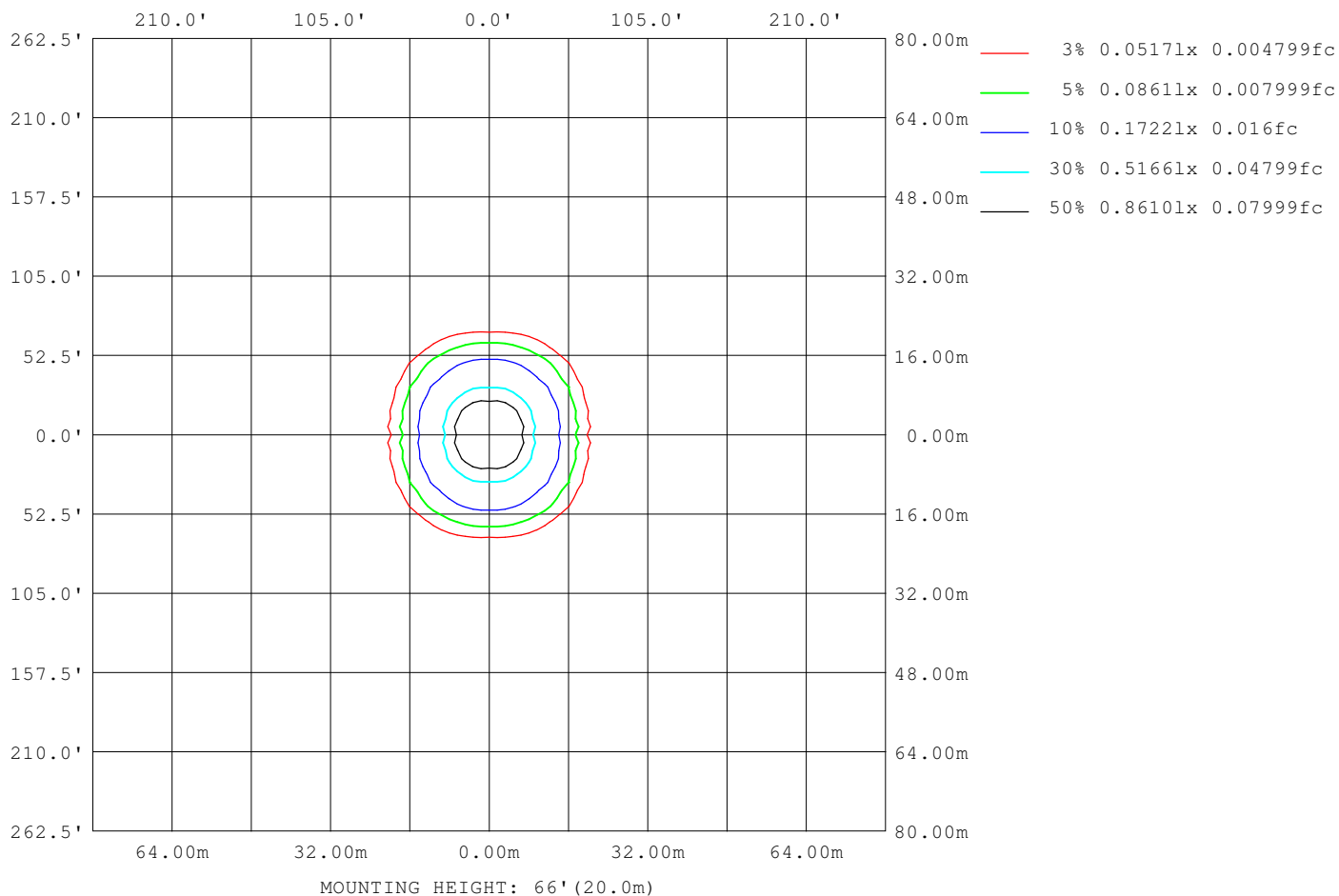
Note:The Curves indicate the illuminated area and the average illumination when the luminaire is at different distance.

C Range: 0 - 90DEG
 C Interval: 5.0DEG
 Test Speed: HIGH
 Temperature:24.7DEG
 Operators:JV
 Test Date:2021-08-24

γ Range:-90 - 90DEG
 γ Interval: 0.5DEG
 Test System:EVERFINE GO-2000H_V1 SYSTEM V2.00.417
 Humidity:59%
 Test Distance:13.200m [K=1.0000]
 Remarks: LUMINARIA LED MÁX. 50 W
 QTEST 22211-02

ISOLUX DIAGRAM

Test:U:120.15V I:0.0928A P:6.5214W PF:0.5846 Freq:60.00Hz Lamp Flux:516.645x1 lm		
NAME: LUMINARIA LED MÁX. 50 W	TYPE: INTERIOR	WEIGHT: NA
SPEC.: NA	DIM.: NA	SERIAL No.: NA
MFR.: DRITE	SUR.: NA	Shielding Angle: NA



C Range: 0 - 90DEG
C Interval: 5.0DEG
Test Speed: HIGH
Temperature: 24.7DEG
Operators: JV
Test Date: 2021-08-24

γ Range: -90 - 90DEG
γ Interval: 0.5DEG
Test System: EVERFINE GO-2000H_V1 SYSTEM V2.00.417
Humidity: 59%
Test Distance: 13.200m [K=1.0000]
Remarks: LUMINARIA LED MÁX. 50 W
QTEST 22211-02

LED Avg.L Report

Test:U:120.15V I:0.0928A P:6.5214W PF:0.5846 Freq:60.00Hz Lamp Flux:516.645x1 lm		
NAME: LUMINARIA LED MÁX. 50 W	TYPE:INTERIOR	WEIGHT:NA
SPEC.:NA	DIM.: NA	SERIAL No.:NA
MFR.: DRITE	SUR.:NA	Shielding Angle:NA

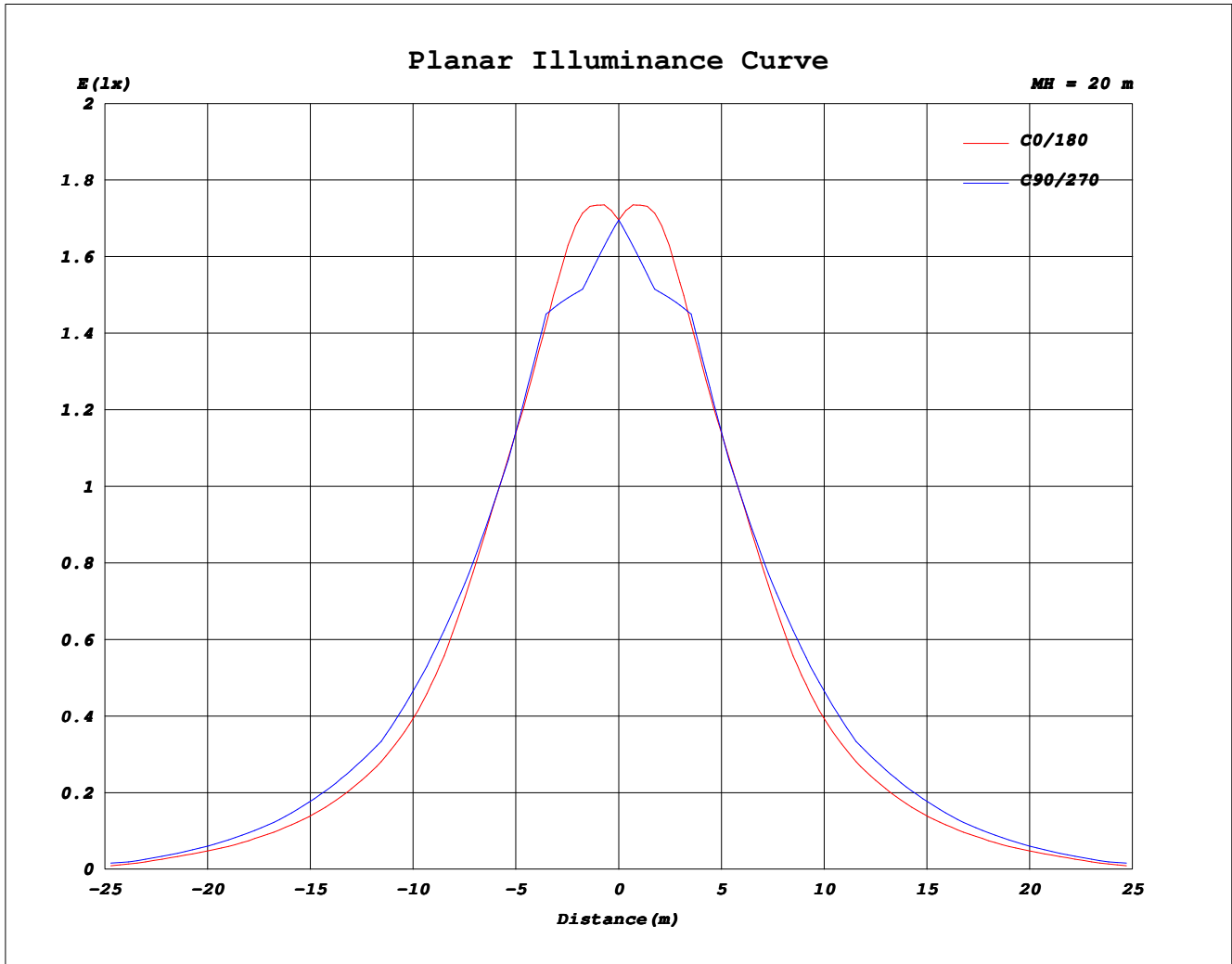
AvgL	cd/m2
L_0~180 (65) av	70
L_0~180 (75) av	64
L_0~180 (85) av	58
L_90~270 (65) av	79
L_90~270 (75) av	60
L_90~270 (85) av	68
L_45 (65) av	160
L_45 (75) av	72
L_45 (85) av	87

Standard: GB/T 29293-2012

C Range: 0 - 90DEG
C Interval: 5.0DEG
Test Speed: HIGH
Temperature:24.7DEG
Operators:JV
Test Date:2021-08-24

γ Range:-90 - 90DEG
γ Interval: 0.5DEG
Test System:EVERFINE GO-2000H_V1 SYSTEM V2.00.417
Humidity:59%
Test Distance:13.200m [K=1.0000]
Remarks: LUMINARIA LED MÁX. 50 W
QTEST 22211-02

Planar Illuminance Curve



C Range: 0 - 90DEG
C Interval: 5.0DEG
Test Speed: HIGH
Temperature: 24.7DEG
Operators: JV
Test Date: 2021-08-24

γ Range: -90 - 90DEG
 γ Interval: 0.5DEG
Test System: EVERFINE GO-2000H_V1 SYSTEM V2.00.417
Humidity: 59%
Test Distance: 13.200m [K=1.0000]
Remarks: LUMINARIA LED MÁX. 50 W
QTEST 22211-02

MARCA DRITE, REFERENCIA OJM248
50 W MÁX. (85-277) V BASE GU10-GX5.3
BOMBILLA LED REF. BOL1019 3000 K 530 Lm

Test Distance: 13.200 metres
Test Temperature: 24.7 degrees Celsius

Significance: PHOTOMETRIC TEST
D-LUX
Carrera 46 # 14-213, Medellín - Antioquia
SAMPLES RECEIVED IN 2021-08-19

Special Notes: TEST EQUIPMENT

GONIOPHOTOMETER SYSTEM: 109A
POWER SUPPLY: 107A
POWER ANALIZER: 110A
THERMOHYGROMETER 294M

Environmental Conditions: 25 ± 1 °C temperature and 50 ± 15% RH
The results reported here relate only to the elements tested.
This test report should not be partially reproduced,
Without the approval of the QTEST Laboratory.

Checked / Approved: Checked
JORGE VALENCIA

Approved
CLAUDIA BETANCUR

Testing Procedure: IESNA LM 79 de 2019 numeral 10

C Range: 0 - 90DEG
C Interval: 5.0DEG
Test Speed: HIGH
Temperature: 24.7DEG
Operators: JV
Test Date: 2021-08-24

γ Range: -90 - 90DEG
γ Interval: 0.5DEG
Test System: EVERFINE GO-2000H_V1 SYSTEM V2.00.417
Humidity: 59%
Test Distance: 13.200m [K=1.0000]
Remarks: LUMINARIA LED MÁX. 50 W
QTEST 22211-02

LUMINOUS DISTRIBUTION INTENSITY DATA

Table with 3 columns: NAME, TYPE, WEIGHT, SPEC, DIM, SERIAL No, MFR, SUR, Shielding Angle. Values include LUMINARIA LED MÁX. 50 W, INTERIOR, NA, etc.

Table--1

UNIT: cd

Large data table with columns C (DEG) and gamma (DEG). Rows contain numerical values for luminous intensity at various angles.

C Range: 0 - 90DEG
C Interval: 5.0DEG
Test Speed: HIGH
Temperature:24.7DEG
Operators:JV
Test Date:2021-08-24

gamma Range:-90 - 90DEG
gamma Interval: 0.5DEG
Test System:EVERFINE GO-2000H_V1 SYSTEM V2.00.417
Humidity:59%
Test Distance:13.200m [K=1.0000]
Remarks: LUMINARIA LED MÁX. 50 W
QTEST 22211-02

LUMINOUS DISTRIBUTION INTENSITY DATA

Test:U:120.15V I:0.0928A P:6.5214W PF:0.5846 Freq:60.00Hz Lamp Flux:516.645x1 lm		
NAME: LUMINARIA LED MÁX. 50 W	TYPE:INTERIOR	WEIGHT:NA
SPEC.:NA	DIM.: NA	SERIAL No.:NA
MFR.: DRITE	SUR.:NA	Shielding Angle:NA

Table--2

UNIT: cd

C (DEG)	95	100	105	110	115	120	125	130	135	140	145	150	155	160	165	170	175	180	185
0	679	679	679	679	679	679	679	679	679	679	679	679	679	679	679	679	679	679	679
5	621	628	635	642	649	654	659	664	668	672	676	678	681	684	686	688	691	693	691
10	615	622	628	633	636	637	637	636	636	636	638	641	632	623	614	607	601	596	601
15	486	499	512	525	533	537	536	533	528	524	520	519	520	523	511	498	486	478	486
20	378	384	392	401	409	415	421	426	426	417	409	399	397	401	408	393	374	358	374
25	291	297	303	307	308	304	298	295	303	311	318	299	281	273	281	286	264	247	264
30	206	209	212	217	222	227	231	227	216	205	209	215	206	190	187	197	187	173	187
35	159	160	161	160	157	155	152	157	161	159	149	144	149	145	132	138	137	125	137
40	111	112	113	115	116	118	117	113	107	108	113	106	98.5	105	97.3	93.7	98.6	86.9	98.6
45	70.8	72.9	74.9	76.4	76.7	76.6	76.8	79.1	80.9	75.5	69.1	73.9	69.5	63.2	68.2	57.5	66.5	54.5	66.5
50	31.6	34.3	37.8	41.9	45.8	49.7	51.4	50.7	48.6	51.0	50.8	42.7	43.1	36.9	34.7	28.6	33.1	21.3	33.1
55	17.9	19.0	20.2	21.5	22.9	24.3	26.8	30.8	33.1	30.0	23.0	24.0	12.2	14.0	8.03	9.19	8.36	7.27	8.36
60	5.08	5.88	7.15	8.85	10.8	13.0	15.0	16.0	12.7	11.8	10.9	6.46	6.70	5.72	6.01	5.68	5.24	4.95	5.24
65	3.41	3.52	3.67	3.89	4.16	4.37	4.42	6.27	6.77	4.92	4.37	4.41	4.04	3.99	3.35	3.12	3.06	2.96	3.06
70	2.00	2.06	2.16	2.33	2.54	2.78	2.97	3.07	2.94	2.65	2.78	2.70	2.30	2.30	2.29	2.23	2.15	2.02	2.15
75	1.58	1.60	1.64	1.67	1.71	1.74	1.76	1.77	1.85	1.93	1.90	1.77	1.79	1.74	1.75	1.73	1.71	1.66	1.71
80	1.18	1.22	1.26	1.28	1.30	1.30	1.30	1.30	1.30	1.32	1.34	1.36	1.37	1.36	1.37	1.34	1.29	1.11	1.29
85	0.62	0.65	0.69	0.73	0.75	0.76	0.76	0.76	0.76	0.77	0.79	0.80	0.82	0.84	0.78	0.76	0.75	0.51	0.75
90	0.08	0.11	0.13	0.15	0.17	0.18	0.18	0.19	0.20	0.21	0.23	0.24	0.25	0.26	0.26	0.27	0.07	0.00	0.07

C Range: 0 - 90DEG
 C Interval: 5.0DEG
 Test Speed: HIGH
 Temperature:24.7DEG
 Operators:JV
 Test Date:2021-08-24

γ Range:-90 - 90DEG
 γ Interval: 0.5DEG
 Test System:EVERFINE GO-2000H_V1 SYSTEM V2.00.417
 Humidity:59%
 Test Distance:13.200m [K=1.0000]
 Remarks: LUMINARIA LED MÁX. 50 W
 QTEST 22211-02

LUMINOUS DISTRIBUTION INTENSITY DATA

Test:U:120.15V I:0.0928A P:6.5214W PF:0.5846 Freq:60.00Hz Lamp Flux:516.645x1 lm		
NAME: LUMINARIA LED MÁX. 50 W	TYPE:INTERIOR	WEIGHT:NA
SPEC.:NA	DIM.: NA	SERIAL No.:NA
MFR.: DRITE	SUR.:NA	Shielding Angle:NA

Table--3

UNIT: cd

C (DEG)	190	195	200	205	210	215	220	225	230	235	240	245	250	255	260	265	270	275	280
0	679	679	679	679	679	679	679	679	679	679	679	679	679	679	679	679	679	679	679
5	688	686	684	681	678	676	672	668	664	659	654	649	642	635	628	621	613	621	628
10	607	614	623	632	641	638	636	636	636	637	637	636	633	628	622	615	608	615	622
15	498	511	523	520	519	520	524	528	533	536	537	533	525	512	499	486	475	486	499
20	393	408	401	397	399	409	417	426	426	421	415	409	401	392	384	378	373	378	384
25	286	281	273	281	299	318	311	303	295	298	304	308	307	303	297	291	285	291	297
30	197	187	190	206	215	209	205	216	227	231	227	222	217	212	209	206	206	206	209
35	138	132	145	149	144	149	159	161	157	152	155	157	160	161	160	159	157	159	160
40	93.7	97.3	105	98.5	106	113	108	107	113	117	118	116	115	113	112	111	109	111	112
45	57.5	68.2	63.2	69.5	73.9	69.1	75.5	80.9	79.1	76.8	76.6	76.7	76.4	74.9	72.9	70.8	69.1	70.8	72.9
50	28.6	34.7	36.9	43.1	42.7	50.8	51.0	48.6	50.7	51.4	49.7	45.8	41.9	37.8	34.3	31.6	29.9	31.6	34.3
55	9.19	8.03	14.0	12.2	24.0	23.0	30.0	33.1	30.8	26.8	24.3	22.9	21.5	20.2	19.0	17.9	17.1	17.9	19.0
60	5.68	6.01	5.72	6.70	6.46	10.9	11.8	12.7	16.0	15.0	13.0	10.8	8.85	7.15	5.88	5.08	4.77	5.08	5.88
65	3.12	3.35	3.99	4.04	4.41	4.37	4.92	6.77	6.27	4.42	4.37	4.16	3.89	3.67	3.52	3.41	3.35	3.41	3.52
70	2.23	2.29	2.30	2.30	2.70	2.78	2.65	2.94	3.07	2.97	2.78	2.54	2.33	2.16	2.06	2.00	1.98	2.00	2.06
75	1.73	1.75	1.74	1.79	1.77	1.90	1.93	1.85	1.77	1.76	1.74	1.71	1.67	1.64	1.60	1.58	1.55	1.58	1.60
80	1.34	1.37	1.36	1.37	1.36	1.34	1.32	1.30	1.30	1.30	1.30	1.30	1.28	1.26	1.22	1.18	1.15	1.18	1.22
85	0.76	0.78	0.84	0.82	0.80	0.79	0.77	0.76	0.76	0.76	0.76	0.75	0.73	0.69	0.65	0.62	0.59	0.62	0.65
90	0.27	0.26	0.26	0.25	0.24	0.23	0.21	0.20	0.19	0.18	0.18	0.17	0.15	0.13	0.11	0.08	0.05	0.08	0.11

C Range: 0 - 90DEG
 C Interval: 5.0DEG
 Test Speed: HIGH
 Temperature:24.7DEG
 Operators:JV
 Test Date:2021-08-24

γ Range:-90 - 90DEG
 γ Interval: 0.5DEG
 Test System:EVERFINE GO-2000H_V1 SYSTEM V2.00.417
 Humidity:59%
 Test Distance:13.200m [K=1.0000]
 Remarks: LUMINARIA LED MÁX. 50 W
 QTEST 22211-02

LUMINOUS DISTRIBUTION INTENSITY DATA

Test:U:120.15V I:0.0928A P:6.5214W PF:0.5846 Freq:60.00Hz Lamp Flux:516.645x1 lm		
NAME: LUMINARIA LED MÁX. 50 W	TYPE:INTERIOR	WEIGHT:NA
SPEC.:NA	DIM.: NA	SERIAL No.:NA
MFR.: DRITE	SUR.:NA	Shielding Angle:NA

Table--4

UNIT: cd

C (DEG) \ γ (DEG)	285	290	295	300	305	310	315	320	325	330	335	340	345	350	355				
0	679	679	679	679	679	679	679	679	679	679	679	679	679	679	679				
5	635	642	649	654	659	664	668	672	676	678	681	684	686	688	691				
10	628	633	636	637	637	636	636	636	638	641	632	623	614	607	601				
15	512	525	533	537	536	533	528	524	520	519	520	523	511	498	486				
20	392	401	409	415	421	426	426	417	409	399	397	401	408	393	374				
25	303	307	308	304	298	295	303	311	318	299	281	273	281	286	264				
30	212	217	222	227	231	227	216	205	209	215	206	190	187	197	187				
35	161	160	157	155	152	157	161	159	149	144	149	145	132	138	137				
40	113	115	116	118	117	113	107	108	113	106	98.5	105	97.3	93.7	98.6				
45	74.9	76.4	76.7	76.6	76.8	79.1	80.9	75.5	69.1	73.9	69.5	63.2	68.2	57.5	66.5				
50	37.8	41.9	45.8	49.7	51.4	50.7	48.6	51.0	50.8	42.7	43.1	36.9	34.7	28.6	33.1				
55	20.2	21.5	22.9	24.3	26.8	30.8	33.1	30.0	23.0	24.0	12.2	14.0	8.03	9.19	8.36				
60	7.15	8.85	10.8	13.0	15.0	16.0	12.7	11.8	10.9	6.46	6.70	5.72	6.01	5.68	5.24				
65	3.67	3.89	4.16	4.37	4.42	6.27	6.77	4.92	4.37	4.41	4.04	3.99	3.35	3.12	3.06				
70	2.16	2.33	2.54	2.78	2.97	3.07	2.94	2.65	2.78	2.70	2.30	2.30	2.29	2.23	2.15				
75	1.64	1.67	1.71	1.74	1.76	1.77	1.85	1.93	1.90	1.77	1.79	1.74	1.75	1.73	1.71				
80	1.26	1.28	1.30	1.30	1.30	1.30	1.30	1.32	1.34	1.36	1.37	1.36	1.37	1.34	1.29				
85	0.69	0.73	0.75	0.76	0.76	0.76	0.76	0.77	0.79	0.80	0.82	0.84	0.78	0.76	0.75				
90	0.13	0.15	0.17	0.18	0.18	0.19	0.20	0.21	0.23	0.24	0.25	0.26	0.26	0.27	0.07				

C Range: 0 - 90DEG
 C Interval: 5.0DEG
 Test Speed: HIGH
 Temperature:24.7DEG
 Operators:JV
 Test Date:2021-08-24

γ Range:-90 - 90DEG
 γ Interval: 0.5DEG
 Test System:EVERFINE GO-2000H_V1 SYSTEM V2.00.417
 Humidity:59%
 Test Distance:13.200m [K=1.0000]
 Remarks: LUMINARIA LED MÁX. 50 W
 QTEST 22211-02