

Report No.:

Test Time: 2022/1/3 15:49:15

## LUMINAIRE PHOTOMETRIC TEST REPORT

### Luminaire Property

Manufacturer: 0  
 Luminaire Type: OJL205 WH  
 Lamp Type:  
 Luminous Width: 0 mm  
 Luminous Length: 0 mm  
 Luminous Height: 0 mm

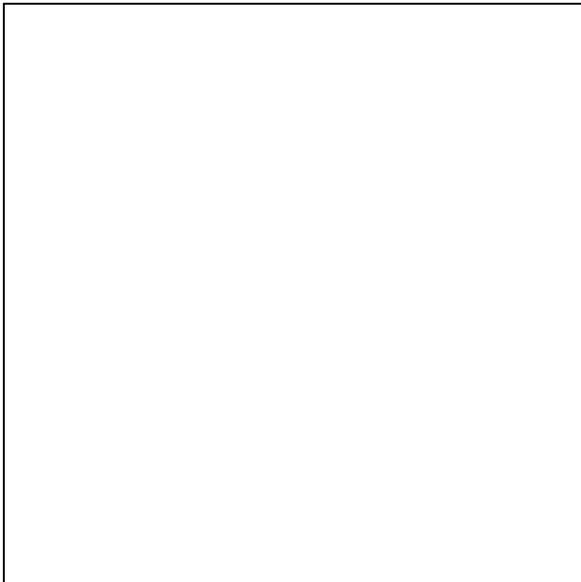
Voltage(V): 109.70 V  
 Current(A): 0.1140 A  
 Power(W): 12.43 W  
 Power Factor: 0.9920  
 Lamp Luminous Flux: 1137.90

### Photometric Results

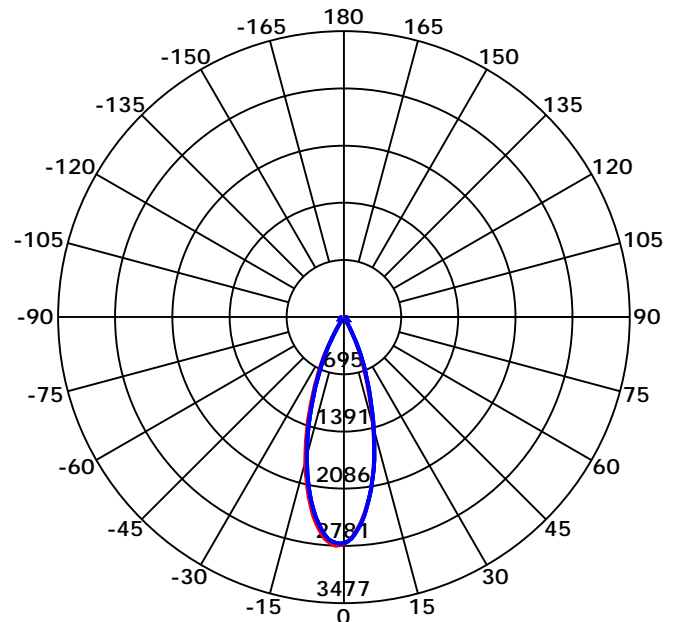
CIE Class: Direct  
 Luminaire Luminous Flux: 1137.9 lm  
 Downward Ratio: 100.00%  
 Luminaire Efficacy Rating(LER): 91.54 lm/W  
 Beam Angle(50%) C0-180,C90-270: 33.5,33.3  
 Field Angle(10%) C0-180,C90-270: 56.1,56.3  
 S/MH C0-180,C90-270: 0.573,0.573

Max. Intensity: 2781.43 cd  
 Max.Intensity Angle: C=180 Gamma=2  
 Upward Ratio: 0.00%  
 Efficacy: 100.00%  
 Center Intensity: 2759.87 cd  
 Effective Luminous Flux: 895.31 lm  
 ERP( $\varphi$ use)(120deg): 1046.96 lm

Picture of Luminaire



Luminous Intensity Distribution Curve



Beam Angle(50%) C0-180,C90-270: 33.5 deg,33.3 deg

C0-180 — C90-270 —

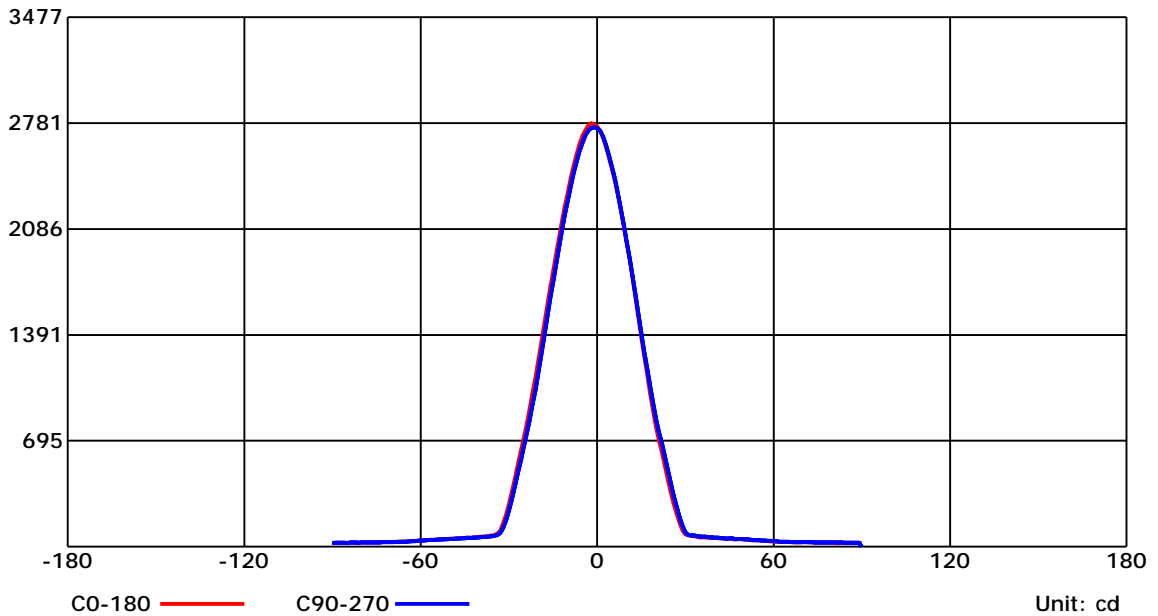
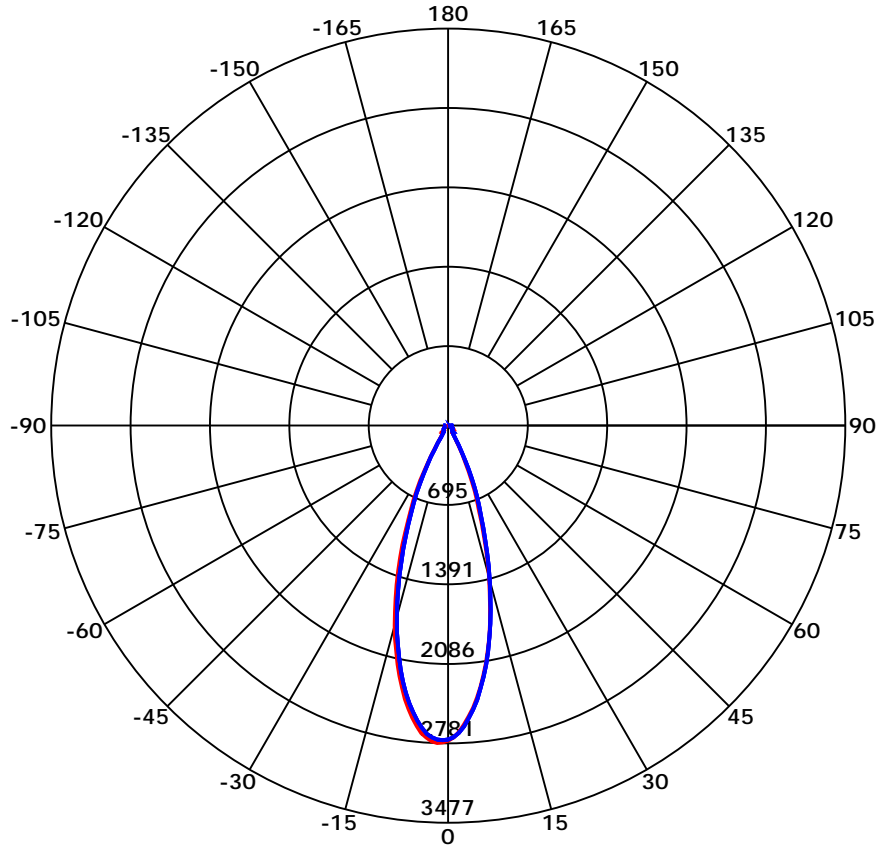
C Range: 0 - 360 Deg  
 C Interval: 45.0 Deg  
 Test Speed: High  
 Temperature:  
 Operators:  
 Test Date: 2022/1/3 15:49:15

G Range: 0 - 90 Deg  
 G Interval: 1.0 Deg  
 Test System: Huipu CPM-1800B Goniophotometer  
 Humidity:  
 Test Distance: 6.04 m  
 Remarks:

Report No.:

Test Time: 2022/1/3 15:49:15

### Luminous Intensity Distribution Curve



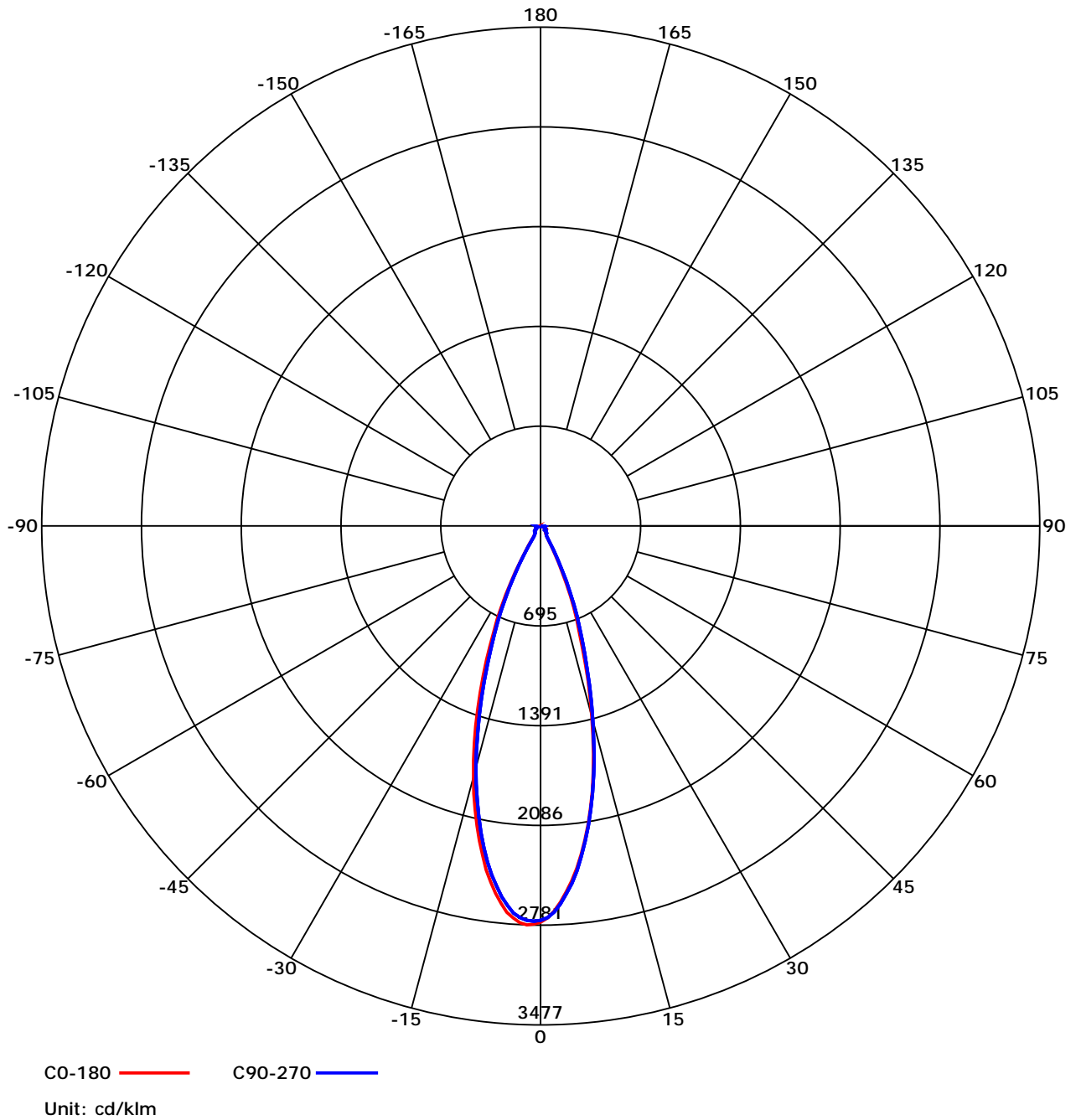
C Range: 0 - 360 Deg  
 C Interval: 45.0 Deg  
 Test Speed: High  
 Temperature:  
 Operators:  
 Test Date: 2022/1/3 15:49:15

G Range: 0 - 90 Deg  
 G Interval: 1.0 Deg  
 Test System: Huipu CPM-1800B Goniophotometer  
 Humidity:  
 Test Distance: 6.04 m  
 Remarks:

Report No.:

Test Time: 2022/1/3 15:49:15

## Luminous Intensity Distribution Curve



C Range: 0 - 360 Deg  
 C Interval: 45.0 Deg  
 Test Speed: High  
 Temperature:  
 Operators:  
 Test Date: 2022/1/3 15:49:15

G Range: 0 - 90 Deg  
 G Interval: 1.0 Deg  
 Test System: Huipu CPM-1800B Goniophotometer  
 Humidity:  
 Test Distance: 6.04 m  
 Remarks:

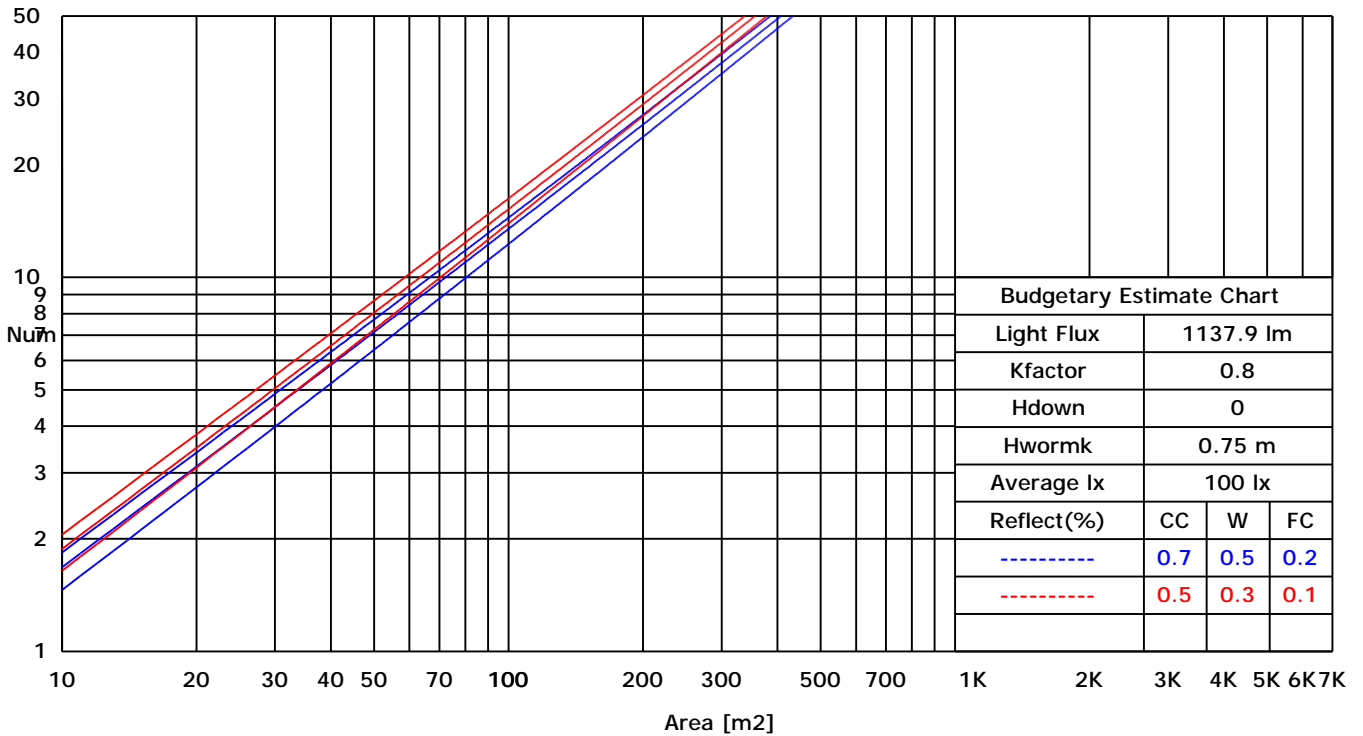
Report No.:

Test Time: 2022/1/3 15:49:15

### UTILIZATION FACTORS TABLE

RHOCC	80			70			50			30			10			0
RHOW	50	30	10	50	30	10	50	30	10	50	30	10	50	30	10	0
RCR	COEFFICIENTS OF UTILIZATION FOR RHOFC=20															
0	1.19	1.19	1.19	1.16	1.16	1.16	1.11	1.11	1.11	1.06	1.06	1.06	1.02	1.02	1.02	1.00
1	0.96	0.93	0.91	0.95	0.92	0.90	0.92	0.89	0.86	0.88	0.85	0.82	0.82	0.79	0.76	0.71
2	0.90	0.88	0.86	0.89	0.86	0.84	0.87	0.84	0.81	0.84	0.80	0.77	0.79	0.75	0.72	0.67
3	0.86	0.83	0.82	0.85	0.82	0.80	0.83	0.79	0.77	0.80	0.76	0.73	0.76	0.72	0.68	0.64
4	0.82	0.80	0.79	0.82	0.79	0.77	0.80	0.76	0.73	0.77	0.73	0.70	0.74	0.69	0.66	0.61
5	0.79	0.77	0.76	0.79	0.76	0.74	0.77	0.73	0.71	0.75	0.70	0.67	0.72	0.67	0.63	0.59
6	0.77	0.75	0.74	0.76	0.74	0.72	0.75	0.71	0.69	0.72	0.68	0.65	0.70	0.65	0.61	0.58
7	0.74	0.73	0.72	0.74	0.72	0.70	0.72	0.69	0.67	0.70	0.66	0.63	0.68	0.63	0.60	0.56
8	0.73	0.71	0.70	0.72	0.70	0.68	0.71	0.67	0.65	0.69	0.65	0.62	0.67	0.62	0.58	0.55
9	0.71	0.69	0.69	0.70	0.68	0.67	0.69	0.66	0.64	0.67	0.63	0.60	0.65	0.60	0.57	0.54
10	0.69	0.68	0.67	0.69	0.67	0.66	0.67	0.64	0.62	0.66	0.62	0.59	0.64	0.59	0.56	0.53

### LUMINAIRE BUDGETARY ESTIMATE DIAGRAM



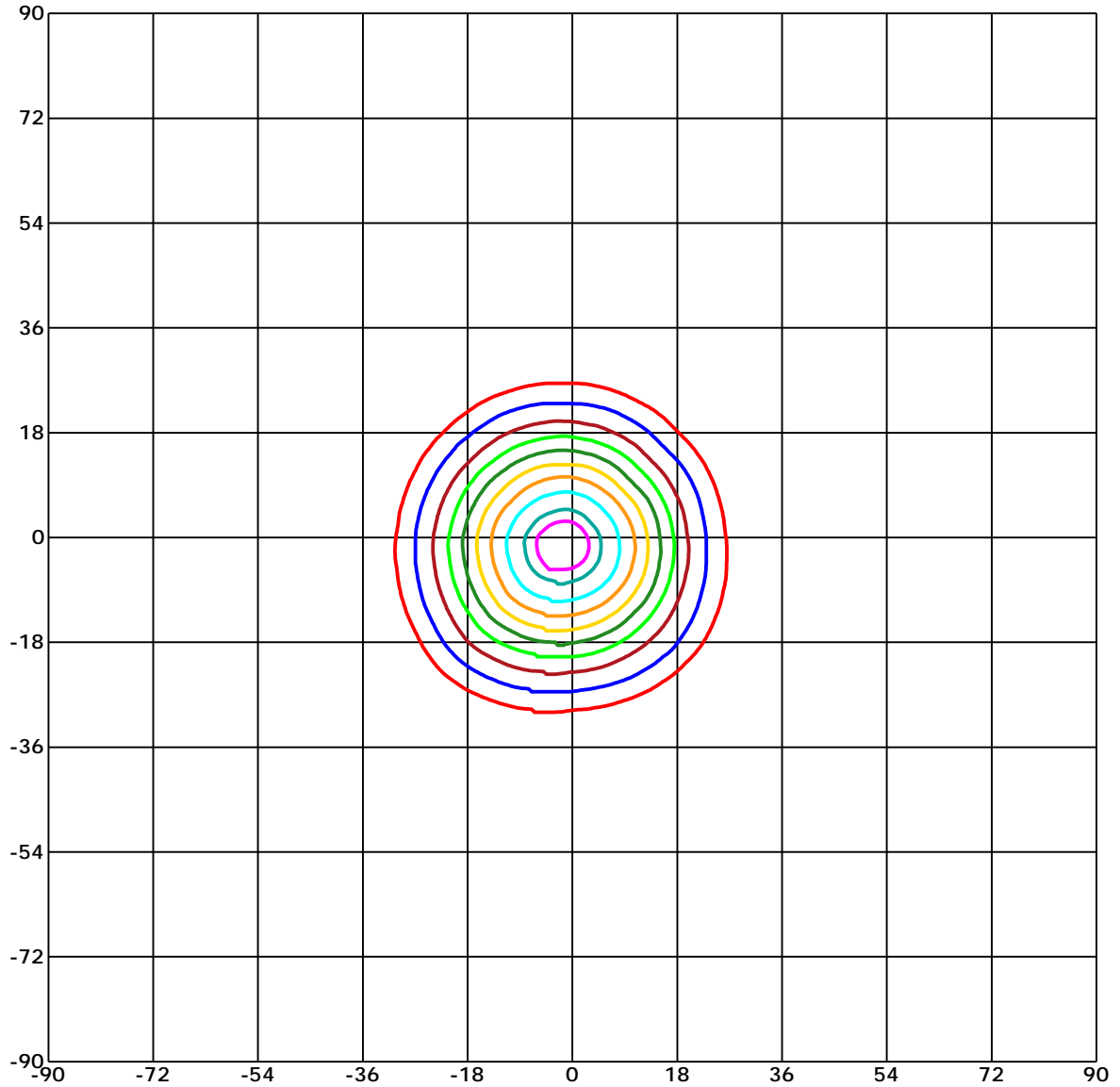
C Range: 0 - 360 Deg  
 C Interval: 45.0 Deg  
 Test Speed: High  
 Temperature:  
 Operators:  
 Test Date: 2022/1/3 15:49:15

G Range: 0 - 90 Deg  
 G Interval: 1.0 Deg  
 Test System: Huipu CPM-1800B Goniophotometer  
 Humidity:  
 Test Distance: 6.04 m  
 Remarks:

Report No.:

Test Time: 2022/1/3 15:49:15

## ISOCANDELA DIAGRAM (RECTANGULAR)



Unit of intensity:cd       $I_{max}(100\%)$ : 2781.43 cd

- |                            |                            |
|----------------------------|----------------------------|
| — 2642.358(95% $I_{max}$ ) | — 1390.715(50% $I_{max}$ ) |
| — 2503.287(90% $I_{max}$ ) | — 1112.572(40% $I_{max}$ ) |
| — 2225.144(80% $I_{max}$ ) | — 834.429(30% $I_{max}$ )  |
| — 1947.001(70% $I_{max}$ ) | — 556.286(20% $I_{max}$ )  |
| — 1668.858(60% $I_{max}$ ) | — 278.143(10% $I_{max}$ )  |

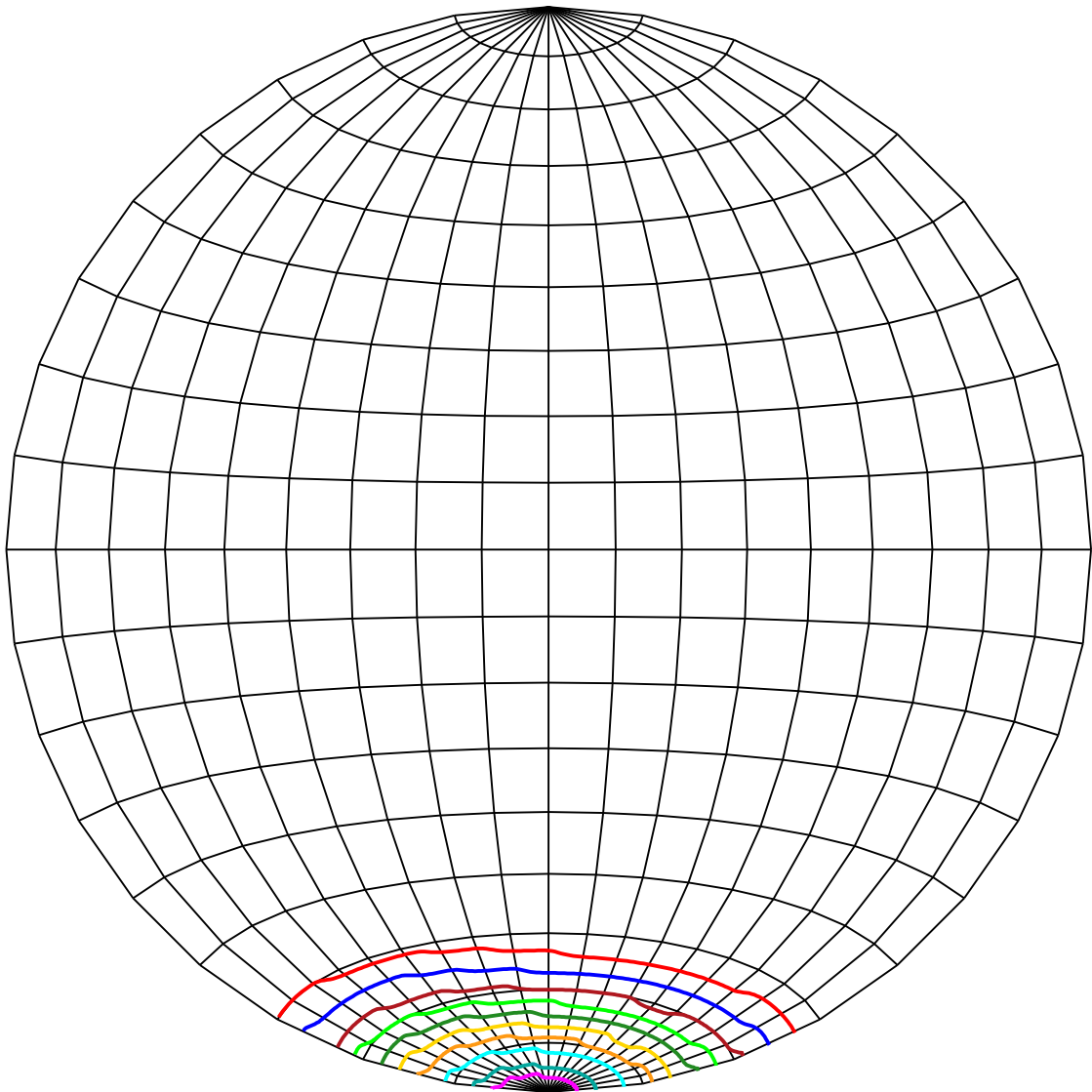
C Range: 0 - 360 Deg  
 C Interval: 45.0 Deg  
 Test Speed: High  
 Temperature:  
 Operators:  
 Test Date: 2022/1/3 15:49:15

G Range: 0 - 90 Deg  
 G Interval: 1.0 Deg  
 Test System: Huipu CPM-1800B Goniophotometer  
 Humidity:  
 Test Distance: 6.04 m  
 Remarks:

Report No.:

Test Time: 2022/1/3 15:49:15

## ISOCANDELA DIAGRAM (SPHERE)



Unit of intensity:cd      I<sub>max</sub>(100%): 2781.43 cd

— 2642.358(95%I<sub>max</sub>)  
 — 2503.287(90%I<sub>max</sub>)  
 — 2225.144(80%I<sub>max</sub>)  
 — 1947.001(70%I<sub>max</sub>)  
 — 1668.858(60%I<sub>max</sub>)

— 1390.715(50%I<sub>max</sub>)  
 — 1112.572(40%I<sub>max</sub>)  
 — 834.429(30%I<sub>max</sub>)  
 — 556.286(20%I<sub>max</sub>)  
 — 278.143(10%I<sub>max</sub>)

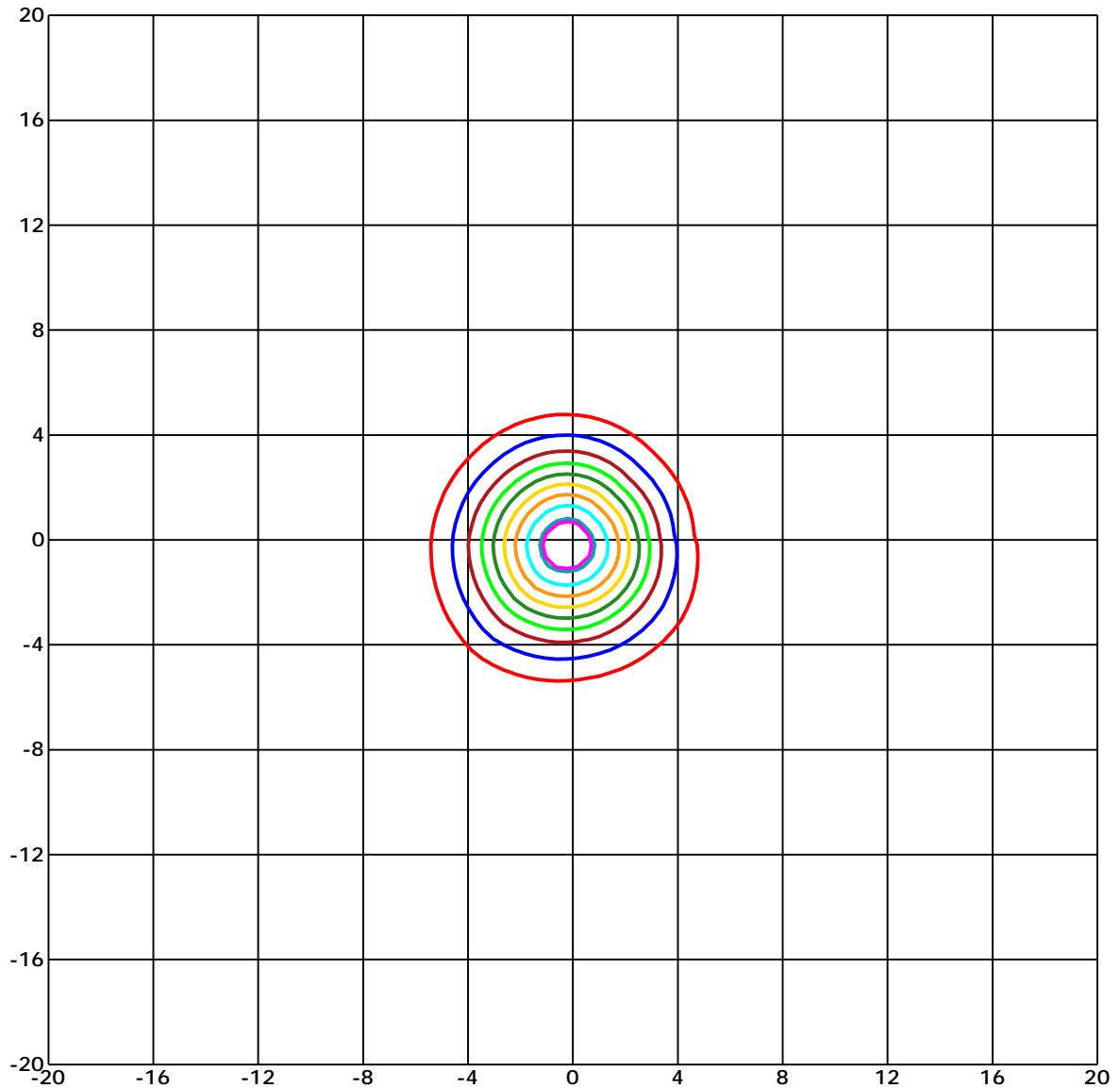
C Range: 0 - 360 Deg  
 C Interval: 45.0 Deg  
 Test Speed: High  
 Temperature:  
 Operators:  
 Test Date: 2022/1/3 15:49:15

G Range: 0 - 90 Deg  
 G Interval: 1.0 Deg  
 Test System: Huipu CPM-1800B Goniophotometer  
 Humidity:  
 Test Distance: 6.04 m  
 Remarks:

Report No.:

Test Time: 2022/1/3 15:49:15

## ISOLX DIAGRAM



Unit of illumination: lx      Height of plane: 10.0(m)/32.81(ft)

- |                  |                  |
|------------------|------------------|
| — 25.542(1%Emax) | — 13.882(0%Emax) |
| — 24.987(1%Emax) | — 11.105(0%Emax) |
| — 22.211(1%Emax) | — 8.329(0%Emax)  |
| — 19.434(1%Emax) | — 5.553(0%Emax)  |
| — 16.658(1%Emax) | — 2.776(0%Emax)  |

C Range: 0 - 360 Deg

C Interval: 45.0 Deg

Test Speed: High

Temperature:

Operators:

Test Date: 2022/1/3 15:49:15

G Range: 0 - 90 Deg

G Interval: 1.0 Deg

Test System: Huipu CPM-1800B Goniophotometer

Humidity:

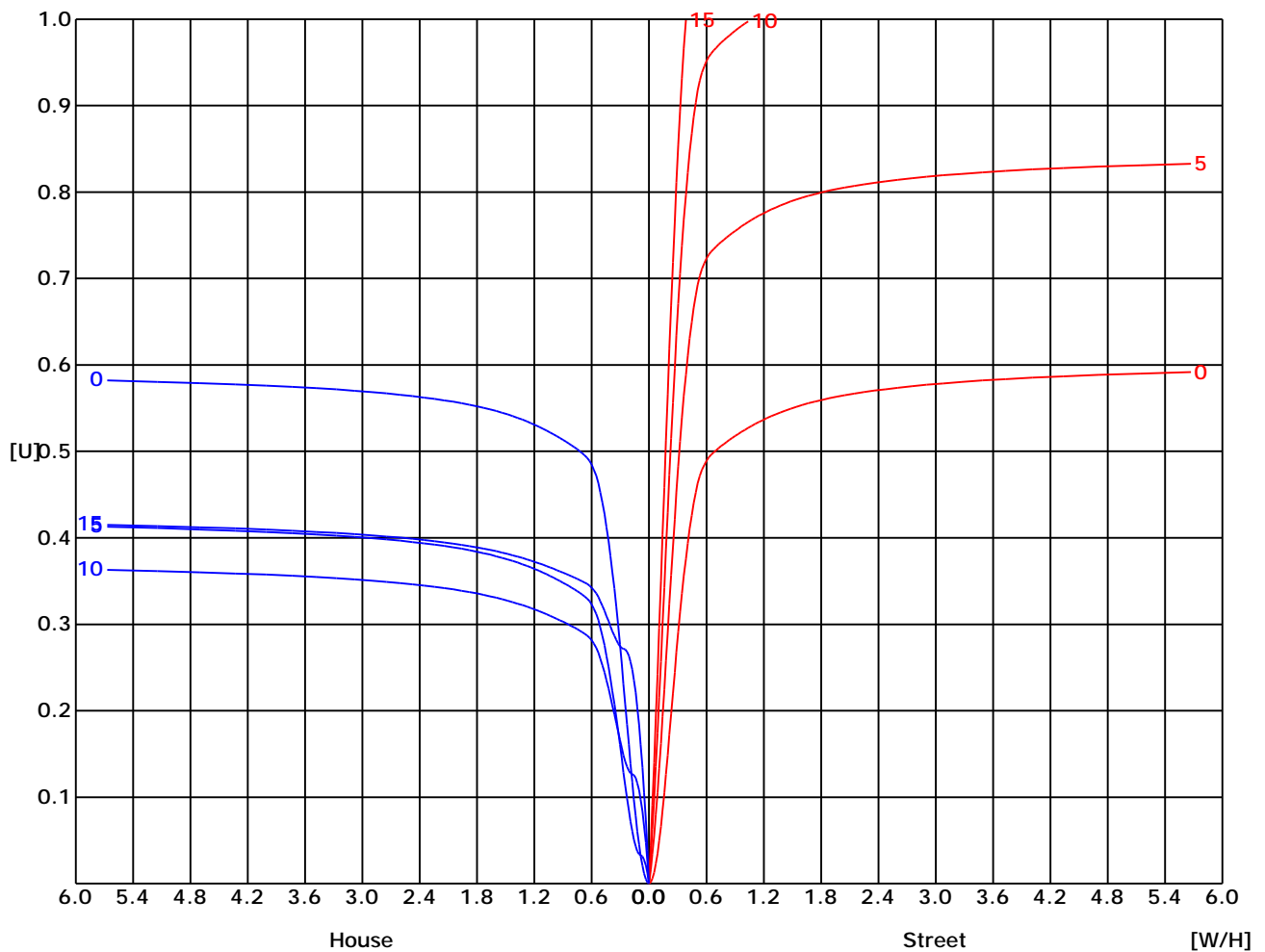
Test Distance: 6.04 m

Remarks:

Report No.:

Test Time: 2022/1/3 15:49:15

## UTILIZATION FACTOR DIAGRAM (ROAD)



C Range: 0 - 360 Deg  
 C Interval: 45.0 Deg  
 Test Speed: High  
 Temperature:  
 Operators:  
 Test Date: 2022/1/3 15:49:15

G Range: 0 - 90 Deg  
 G Interval: 1.0 Deg  
 Test System: Huipu CPM-1800B Goniophotometer  
 Humidity:  
 Test Distance: 6.04 m  
 Remarks:

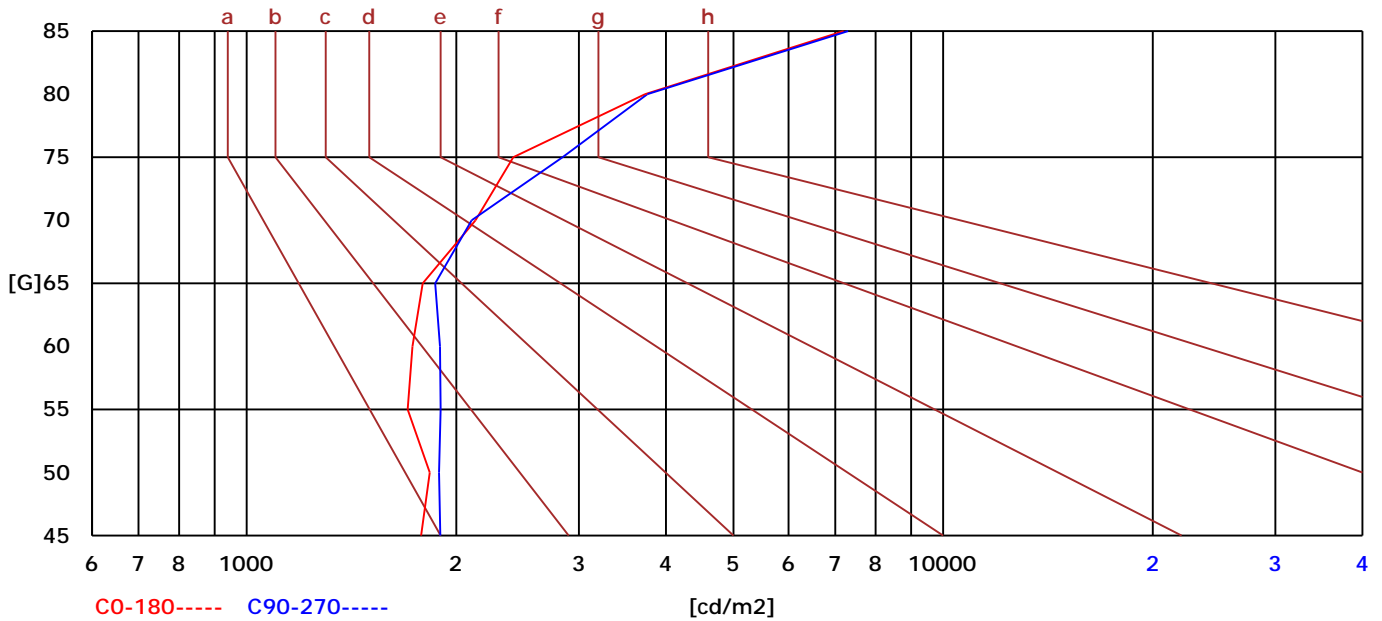


Report No.:

Test Time: 2022/1/3 15:49:15

## BRIGHT LIMIT DIAGRAM

C/G	45	50	55	60	65	70	75	80	85
C0	1780	1832	1703	1731	1791	2131	2414	3734	7200
C90	1897	1890	1900	1895	1865	2104	2844	3761	7304
Dazzle	Quality	Illuminance	---	---	---	---	---	---	---
1.15	A	2000	1000	500	<=300				
1.5	B		2000	1000	500	<=300			
1.85	C			2000	1000	500	<=300		
2.2	D				2000	1000	500	<=300	
2.55	E					2000	1000	500	<=300
---	---	a	b	c	d	e	f	g	h



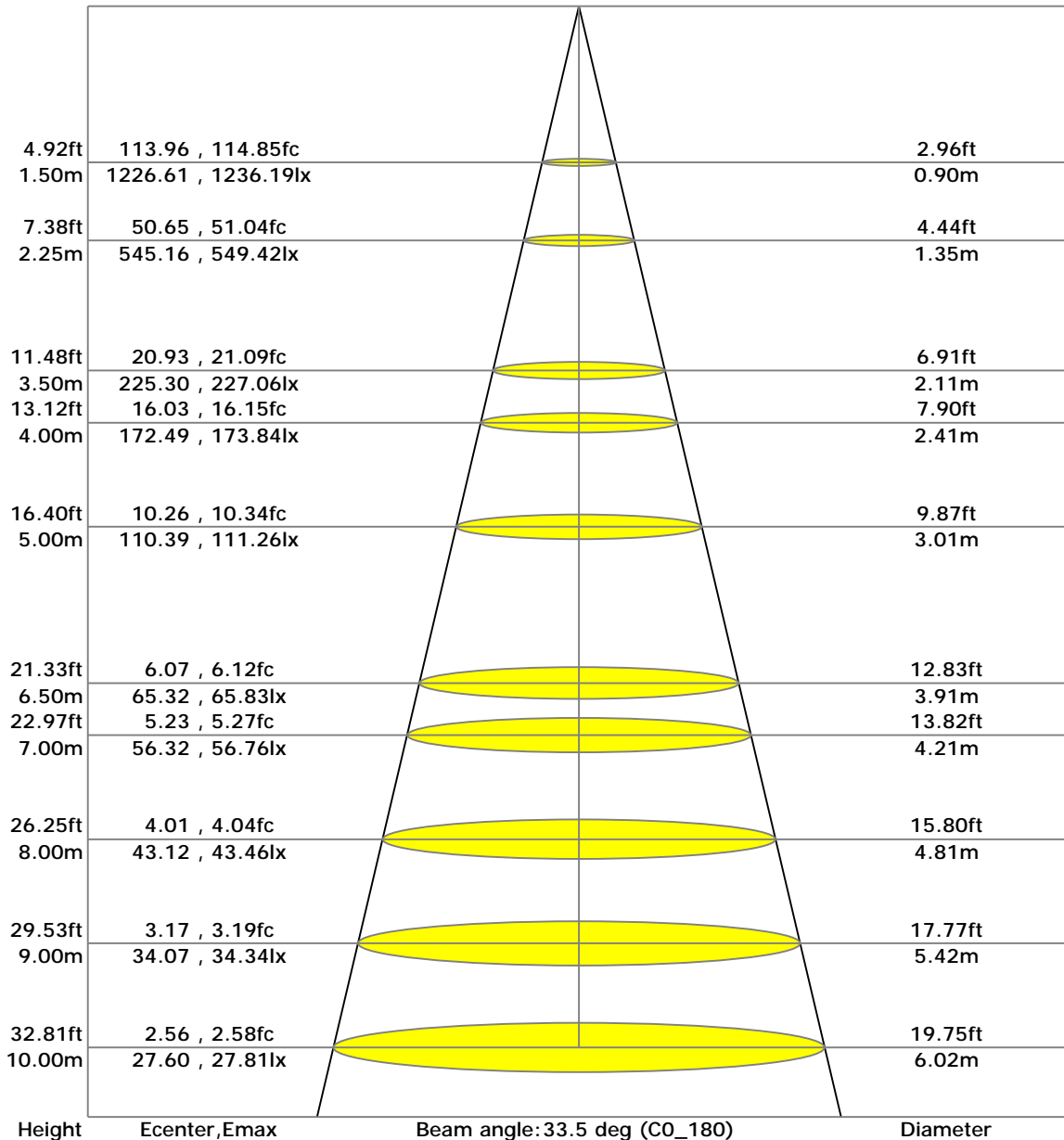
C Range: 0 - 360 Deg  
 C Interval: 45.0 Deg  
 Test Speed: High  
 Temperature:  
 Operators:  
 Test Date: 2022/1/3 15:49:15

G Range: 0 - 90 Deg  
 G Interval: 1.0 Deg  
 Test System: Huipu CPM-1800B Goniophotometer  
 Humidity:  
 Test Distance: 6.04 m  
 Remarks:

Report No.:

Test Time: 2022/1/3 15:49:15

### LX-DISTANCE DIAGRAM



C Range: 0 - 360 Deg  
 C Interval: 45.0 Deg  
 Test Speed: High  
 Temperature:  
 Operators:  
 Test Date: 2022/1/3 15:49:15

G Range: 0 - 90 Deg  
 G Interval: 1.0 Deg  
 Test System: Huipu CPM-1800B Goniophotometer  
 Humidity:  
 Test Distance: 6.04 m  
 Remarks:

Report No.:

Test Time: 2022/1/3 15:49:15

## UGR(Unified Glare Rating) TABLE

RHOCC		70	70	50	50	30	70	70	50	50	30
RHOW		50	30	50	30	30	50	30	50	30	30
RHOF		20	20	20	20	20	20	20	20	20	20
Room Size X Y		Viewed Endwise					Viewed Crosswise				
2H	2H	7.65	7.71	7.85	7.89	8.14	7.84	7.90	8.04	8.09	8.33
	3H	7.96	8.02	8.16	8.21	8.45	8.13	8.18	8.33	8.38	8.62
	4H	8.07	8.13	8.28	8.32	8.57	8.22	8.28	8.43	8.48	8.73
	6H	8.13	8.19	8.35	8.39	8.64	8.27	8.33	8.49	8.53	8.79
	8H	8.12	8.18	8.34	8.38	8.64	8.26	8.32	8.48	8.53	8.78
	12H	8.11	8.17	8.33	8.38	8.63	8.26	8.31	8.48	8.52	8.78
4H	2H	11.73	11.79	11.94	11.99	12.24	11.96	12.02	12.17	12.22	12.47
	3H	12.34	12.40	12.56	12.60	12.86	12.54	12.60	12.76	12.81	13.06
	4H	12.60	12.66	12.83	12.87	13.13	12.78	12.84	13.01	13.05	13.31
	6H	12.80	12.86	13.04	13.08	13.35	12.96	13.02	13.20	13.24	13.50
	8H	12.88	12.94	13.12	13.16	13.43	13.02	13.08	13.27	13.31	13.57
	12H	12.91	12.97	13.16	13.20	13.47	13.05	13.11	13.30	13.34	13.61
8H	4H	14.19	14.25	14.41	14.45	14.71	14.66	14.72	14.88	14.92	15.17
	6H	16.06	16.11	16.31	16.35	16.62	16.42	16.47	16.67	16.71	16.98
	8H	16.27	16.32	16.53	16.56	16.84	16.60	16.65	16.86	16.90	17.18
	12H	16.44	16.49	16.71	16.74	17.02	16.75	16.80	17.02	17.05	17.34
12H	4H	16.90	16.95	17.14	17.18	17.45	17.26	17.31	17.51	17.55	17.82
	6H	17.53	17.58	17.80	17.83	18.11	17.85	17.90	18.11	18.15	18.42

C Range: 0 - 360 Deg  
 C Interval: 45.0 Deg  
 Test Speed: High  
 Temperature:  
 Operators:  
 Test Date: 2022/1/3 15:49:15

G Range: 0 - 90 Deg  
 G Interval: 1.0 Deg  
 Test System: Huipu CPM-1800B Goniophotometer  
 Humidity:  
 Test Distance: 6.04 m  
 Remarks:

Report No.:

Test Time: 2022/1/3 15:49:15

### ZONAL LUMINOUS FLUX TABLE

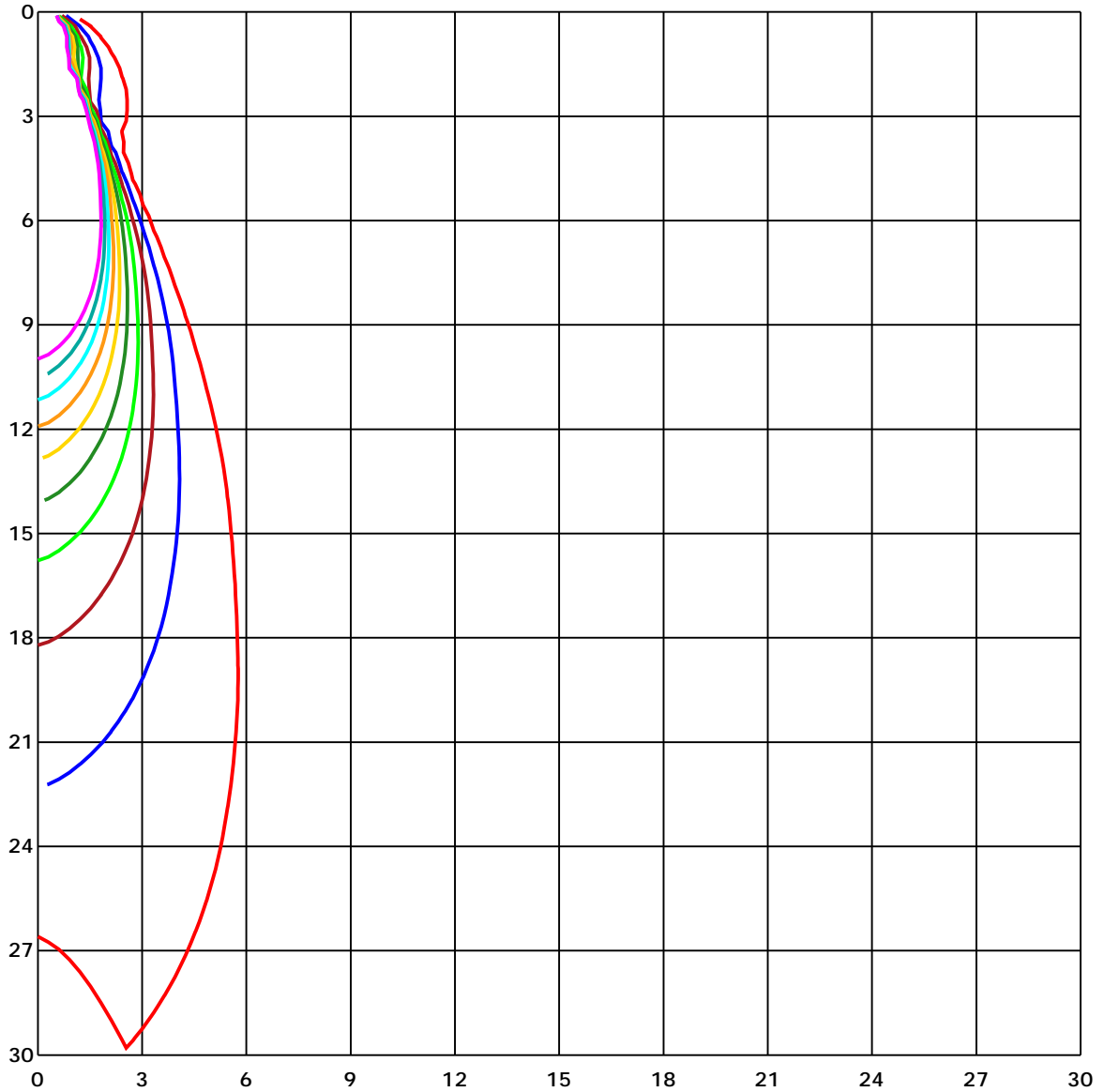
Gamma [deg]	I <sub>mean</sub> [cd]	Zonal Flux [lm]	Sum Flux [lm]	Zonal Flux [%]	Sum Flux [%]
0	2750.96	0.00	0.00	0.00	0.00
5	2637.42	63.68	63.68	5.60	5.60
10	2250.58	168.59	232.27	14.82	20.41
15	1699.65	219.87	452.14	19.32	39.73
20	1111.58	209.82	661.96	18.44	58.17
25	634.12	159.83	821.79	14.05	72.22
30	244.11	88.96	910.75	7.82	80.04
35	79.82	32.68	943.44	2.87	82.91
40	62.65	21.78	965.22	1.91	84.82
45	56.14	21.38	986.60	1.88	86.70
50	51.08	21.17	1007.77	1.86	88.56
55	44.73	20.25	1028.02	1.78	90.34
60	38.71	18.94	1046.96	1.66	92.01
65	33.18	17.02	1063.97	1.50	93.50
70	30.30	15.71	1079.68	1.38	94.88
75	28.50	15.20	1094.88	1.34	96.22
80	27.26	14.79	1109.67	1.30	97.52
85	26.60	14.38	1124.05	1.26	98.78
90	25.22	13.85	1137.90	1.22	100.00

C Range: 0 - 360 Deg  
C Interval: 45.0 Deg  
Test Speed: High  
Temperature:  
Operators:  
Test Date: 2022/1/3 15:49:15  
G Range: 0 - 90 Deg  
G Interval: 1.0 Deg  
Test System: Huipu CPM-1800B Goniophotometer  
Humidity:  
Test Distance: 6.04 m  
Remarks:

Report No.:

Test Time: 2022/1/3 15:49:15

## SPACE ISOLX DIAGRAM



Unit of illumination: lx

- |          |          |
|----------|----------|
| — 27.738 | — 13.869 |
| — 24.964 | — 11.095 |
| — 22.19  | — 8.321  |
| — 19.416 | — 5.548  |
| — 16.643 | — 2.774  |

C Range: 0 - 360 Deg  
 C Interval: 45.0 Deg  
 Test Speed: High  
 Temperature:  
 Operators:  
 Test Date: 2022/1/3 15:49:15

G Range: 0 - 90 Deg  
 G Interval: 1.0 Deg  
 Test System: Huipu CPM-1800B Goniophotometer  
 Humidity:  
 Test Distance: 6.04 m  
 Remarks:

Report No.:

Test Time: 2022/1/3 15:49:15

## LUMINOUS DISTRIBUTION INTENSITY DATA

Gamma/C	C0	C45	C90	C135	C180	C225	C270	C315	C360	
G0	2759.87	2746.74	2747.47	2749.76	2759.87	2746.74	2747.47	2749.76	2759.87	
G1	2731.12	2709.53	2728.9	2745.61	2773.55	2771.76	2753.96	2741.56	2731.12	
G2	2684.13	2653.6	2692.05	2727.07	2781.43	2780.04	2749.25	2719.56	2684.13	
G3	2623.65	2586.22	2636.67	2691.36	2768.37	2774.1	2732.22	2684.24	2623.65	
G4	2554.48	2509.5	2569.14	2639.63	2738.16	2752.79	2704.64	2631.02	2554.48	
G5	2481.66	2421.39	2498.59	2574.91	2702.16	2720.73	2655.09	2569.98	2481.66	
G6	2397.57	2325.74	2414.57	2506.32	2644.7	2681.84	2597.13	2504.9	2397.57	
G7	2307.39	2226.18	2319.25	2421.87	2577.35	2630.65	2528.25	2428.65	2307.39	
G8	2210.75	2121.44	2219.94	2328.18	2504.13	2564.73	2456.23	2339.46	2210.75	
G9	2106.78	2006.93	2118.71	2236.32	2425.63	2488.92	2369.99	2251.39	2106.78	
G10	1997.4	1889.75	2007.44	2132.79	2331.43	2407.57	2276.89	2146.25	1997.4	
G11	1882.01	1771.18	1892.16	2025.53	2235.67	2319.65	2177.99	2040.56	1882.01	
G12	1760.64	1646.38	1775.23	1916.31	2136.29	2217.75	2073.07	1932.69	1760.64	
G13	1631.86	1521.79	1654.04	1798.03	2030.06	2119.03	1963.66	1817.04	1631.86	
G14	1504.32	1394.95	1529.24	1684.87	1922.98	2010.65	1853.45	1696.72	1504.32	
G15	1375.83	1269.41	1405.02	1563.42	1811.75	1901.9	1740.87	1571.96	1375.83	
G16	1253.18	1150.34	1282.11	1445.15	1695.56	1790.52	1623.87	1449.63	1253.18	
G17	1125.2	1029.11	1165.81	1324.17	1579.69	1675.71	1501.47	1326.65	1125.2	
G18	1000.0	918.72	1051.8	1207.36	1463.5	1555.03	1380.97	1207.43	1000.0	
G19	889.2	818.14	943.74	1096.82	1344.89	1440.37	1264.82	1094.67	889.2	
G20	786.36	731.13	842.32	985.88	1231.36	1320.67	1150.3	986.68	786.36	
G21	698.84	650.39	754.07	882.82	1118.64	1217.06	1033.63	885.23	698.84	
G22	614.64	564.7	675.6	785.81	1009.05	1111.74	930.94	795.04	614.64	
G23	527.74	477.47	591.18	701.07	902.7	1009.81	827.95	723.14	527.74	
G24	438.91	392.32	505.38	618.69	803.62	920.21	739.85	653.97	438.91	
G25	357.78	312.03	421.25	531.14	716.24	833.68	656.52	578.96	357.78	
G26	282.88	238.01	336.83	442.59	630.15	753.67	565.61	496.99	282.88	
G27	213.42	172.27	261.9	356.9	537.16	673.63	479.44	411.51	213.42	
G28	153.19	119.33	191.24	277.63	445.48	581.99	393.16	329.76	153.19	
G29	104.96	83.98	136.81	206.23	363.65	491.88	312.94	252.45	104.96	
G30	79.75	70.96	92.74	148.44	283.64	406.66	240.67	187.92	79.75	
G31	73.55	70.96	79.27	101.82	211.99	325.12	175.08	132.98	73.55	
G32	69.97	68.33	74.28	78.44	151.62	250.59	121.26	93.28	69.97	
G33	67.53	61.62	74.28	73.07	104.12	183.87	88.69	80.84	67.53	
G34	65.05	64.28	68.88	69.5	86.46	131.92	77.2	75.26	65.05	
G35	59.14	58.63	66.8	65.19	75.44	95.87	71.91	72.2	59.14	
G36	61.76	61.18	64.94	65.01	75.01	82.67	68.84	69.57	61.76	

C Range: 0 - 360 Deg  
 C Interval: 45.0 Deg  
 Test Speed: High  
 Temperature:  
 Operators:  
 Test Date: 2022/1/3 15:49:15

G Range: 0 - 90 Deg  
 G Interval: 1.0 Deg  
 Test System: Huipu CPM-1800B Goniophotometer  
 Humidity:  
 Test Distance: 6.04 m  
 Remarks:

Report No.:

Test Time: 2022/1/3 15:49:15

## LUMINOUS DISTRIBUTION INTENSITY DATA(Continue 1)

GammaC	C0	C45	C90	C135	C180	C225	C270	C315	C360	
G37	60.23	56.73	65.52	66.03	68.66	78.11	64.75	67.45	60.23	
G38	59.03	58.3	61.95	61.69	69.13	72.71	62.86	65.38	59.03	
G39	57.75	57.09	60.89	60.3	66.62	71.8	62.75	63.99	57.75	
G40	56.62	55.93	59.65	58.95	64.86	67.2	61.36	62.35	56.62	
G41	55.38	54.58	58.81	57.86	63.04	65.48	60.41	61.07	55.38	
G42	53.41	53.66	56.91	56.58	61.73	63.77	58.92	59.9	53.41	
G43	53.52	52.64	55.96	55.63	60.27	62.2	57.68	58.41	53.52	
G44	52.42	52.79	53.59	54.61	60.85	60.78	56.55	57.53	52.42	
G45	51.22	50.34	54.98	53.66	57.75	62.02	55.38	56.55	51.22	
G46	49.91	49.07	54.18	54.47	56.47	58.41	54.28	55.34	49.91	
G47	48.92	48.08	48.92	51.88	55.6	57.17	53.3	54.25	48.92	
G48	49.83	49.43	51.8	50.78	54.39	56.25	52.42	53.01	49.83	
G49	48.67	45.78	50.53	49.65	53.3	57.71	51.18	51.84	48.67	
G50	45.42	47.1	49.07	48.59	52.39	54.14	50.34	50.49	45.42	
G51	44.25	43.6	48.05	47.57	51.15	53.15	48.63	49.25	44.25	
G52	43.3	42.43	46.4	46.66	49.76	51.95	48.05	47.97	43.3	
G53	42.28	41.19	43.49	45.57	51.26	50.82	46.99	46.88	42.28	
G54	41.11	40.24	43.85	41.52	49.91	49.61	45.86	45.71	41.11	
G55	40.06	39.07	42.68	43.6	46.48	51.18	45.05	44.62	40.06	
G56	38.85	37.87	41.26	42.65	45.53	47.46	43.92	43.45	38.85	
G57	37.79	36.59	40.09	41.52	44.33	46.3	45.35	42.46	37.79	
G58	36.63	34.62	38.56	40.57	43.34	47.64	41.92	41.41	36.63	
G59	34.99	33.31	38.85	35.24	42.25	44.18	40.9	39.98	34.99	
G60	33.45	34.62	37.14	37.9	41.33	43.01	39.73	40.24	33.45	
G61	32.29	33.45	36.19	35.79	40.28	41.88	38.42	38.96	32.29	
G62	31.37	31.48	33.05	34.55	37.03	40.53	36.96	35.02	31.37	
G63	32.76	31.19	32.65	31.34	37.03	39.33	35.42	34.07	32.76	
G64	30.17	30.5	32.21	32.69	35.61	37.72	33.38	33.16	30.17	
G65	31.78	30.28	31.63	31.52	34.62	35.9	32.8	32.65	31.78	
G66	29.26	28.6	30.94	31.19	34.0	34.58	32.1	32.03	29.26	
G67	28.71	29.99	30.43	30.28	33.27	33.78	31.7	31.52	28.71	
G68	28.38	29.73	29.88	31.01	28.97	34.66	31.08	33.13	28.38	
G69	27.98	29.51	29.77	29.4	31.92	32.72	30.61	30.46	27.98	
G70	29.26	29.15	29.33	28.78	29.08	32.07	30.13	30.02	29.26	
G71	28.97	28.97	29.26	28.46	30.1	31.67	29.59	29.62	28.97	
G72	27.11	28.82	29.88	27.98	29.81	31.3	29.22	31.37	27.11	
G73	27.91	28.42	29.48	27.8	29.44	30.79	28.97	29.08	27.91	

C Range: 0 - 360 Deg  
 C Interval: 45.0 Deg  
 Test Speed: High  
 Temperature:  
 Operators:  
 Test Date: 2022/1/3 15:49:15

G Range: 0 - 90 Deg  
 G Interval: 1.0 Deg  
 Test System: Huipu CPM-1800B Goniophotometer  
 Humidity:  
 Test Distance: 6.04 m  
 Remarks:

Report No.:

Test Time: 2022/1/3 15:49:15

### LUMINOUS DISTRIBUTION INTENSITY DATA(Continue 2)

Gamma\C	C0	C45	C90	C135	C180	C225	C270	C315	C360	
G74	26.78	28.2	28.75	27.51	28.82	30.5	28.75	28.67	26.78	
G75	26.34	24.99	27.62	29.44	28.49	30.17	28.53	28.42	26.34	
G76	25.46	27.51	28.6	27.03	27.98	28.38	28.35	28.09	25.46	
G77	26.16	27.18	28.38	26.81	27.91	28.31	28.02	27.94	26.16	
G78	26.19	26.7	28.24	28.6	27.4	29.26	27.91	29.7	26.19	
G79	25.87	26.3	28.05	26.41	27.25	29.08	27.76	27.32	25.87	
G80	25.83	25.94	27.84	26.12	29.19	29.08	27.65	27.29	25.83	
G81	22.91	25.87	27.73	25.94	26.81	25.68	25.61	27.0	22.91	
G82	22.18	25.72	27.36	27.84	26.7	28.67	27.4	26.74	22.18	
G83	25.46	25.54	27.11	25.72	26.38	28.46	27.11	26.52	25.46	
G84	25.35	25.39	26.56	25.5	26.12	28.35	27.11	28.46	25.35	
G85	25.14	25.1	26.3	25.46	26.12	27.94	23.57	28.16	25.14	
G86	24.99	24.95	25.21	26.41	25.83	27.76	26.67	26.05	24.99	
G87	24.44	24.95	25.21	25.1	25.72	23.79	26.08	25.87	24.44	
G88	24.3	24.95	25.43	26.08	25.97	26.34	26.19	26.38	24.3	
G89	23.82	26.19	25.39	25.06	25.65	26.05	25.28	24.33	23.82	
G90	23.24	23.61	0.0	25.18	25.94	26.05	23.97	24.33	23.24	

C Range: 0 - 360 Deg  
 C Interval: 45.0 Deg  
 Test Speed: High  
 Temperature:  
 Operators:  
 Test Date: 2022/1/3 15:49:15

G Range: 0 - 90 Deg  
 G Interval: 1.0 Deg  
 Test System: Huipu CPM-1800B Goniophotometer  
 Humidity:  
 Test Distance: 6.04 m  
 Remarks: