

Lightsource Test Report

Product Infomation

Product Type: OJL608-30W-4000K 象牙白

Product Number: 93

Buyer:

CIE Colorimetric Parameters

Chromaticity coordinates: $x=0.3817$ $y=0.3726$ $u(u')=0.2276$ $v=0.3333$ $v'=0.4999$

CCT: $T_c=3934K$ ($duv=-0.00233$)

Color Ratio: $R=0.189$ $G=0.774$ $B=0.037$

Peak Wavelength: 450.5nm

Half Bandwidth: 19.9nm

Dominant Wavelength: 580.7nm

Color Purity: 0.264

Central Wave: 451.7nm

Gravity Wave: 451.1nm

CRI: $R_a=84.5$, $avgR(1\sim14)=78.7$, $avgR(1\sim15)=78.6$

TM30: $R_f=84$, $R_g=97$

GAI: $GAI_BB_8=96.9$, $GAI_BB_15=102.9$, $GAI_EES=75.4$

R1 =83

R2 =91

R3 =95

R4 =84

R5 =84

R6 =87

R7 =85

R8 =66

R9 =15

R10=78

R11=83

R12=66

R13=85

R14=98

R15=78

Color Quality Scale: $Q_a=83.4$, $Q_f=83.3$, $Q_p=84.2$, $Q_g=94.4$

Q1 =83

Q2 =99

Q3 =79

Q4 =77

Q5 =83

Q6 =85

Q7 =86

Q8 =89

Q9 =98

Q10=89

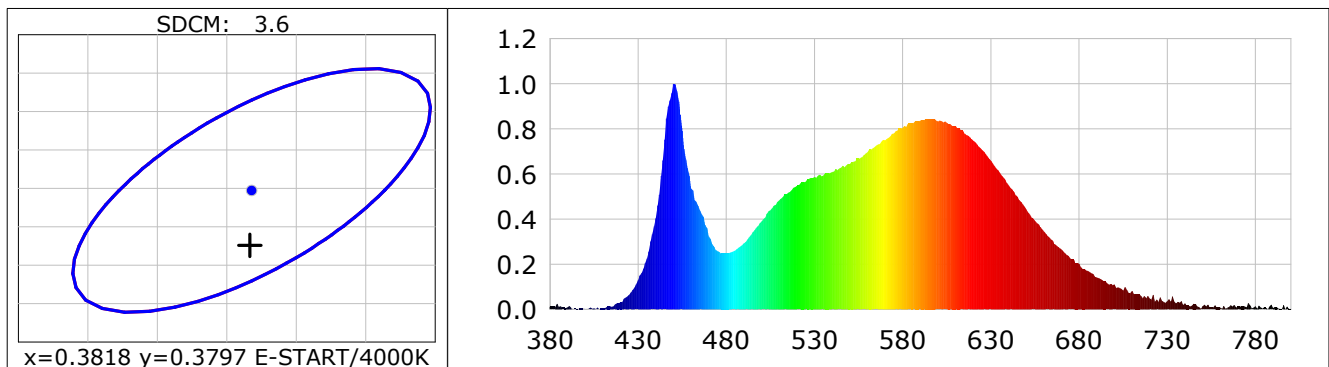
Q11=85

Q12=84

Q13=84

Q14=74

Q15=77



Photometric Parameters

Luminous Flux: 3691.0 lm

Efficiency: 117.14 lm/W

Radiant Power: 11.332 W

Total mains efficacy: 117.14 lm/W

Energy Efficiency Class: E (EU 2019/2015)

Cirtpic Flux: 11277.82 lm

Electric Parameters

Voltage: 119.60V

Current: 0.2660A

Power: 31.51W

Power Factor: 0.9910

Frequency: 59.99Hz

Test Infomation

Scan Range: 380~800:1nm

Photometric Method: sphere-spectroradiometer

Stabilization Time: 0 Sec ALC.: 1.0000

Photometric Condition: Sphere diameter: 1.50m, 4T

Max of Signal: 46594 (4426)

CCD Integration Time: 1804.88 ms

Condition: $T_x:35.3^{\circ}C$, $T_i:33.8^{\circ}C$, R.H.:60%

Test Lab:

Operator:

Test Device: CMS-2S (Plus)

Test Time: 2024-04-17 16:14:35

Inspector:



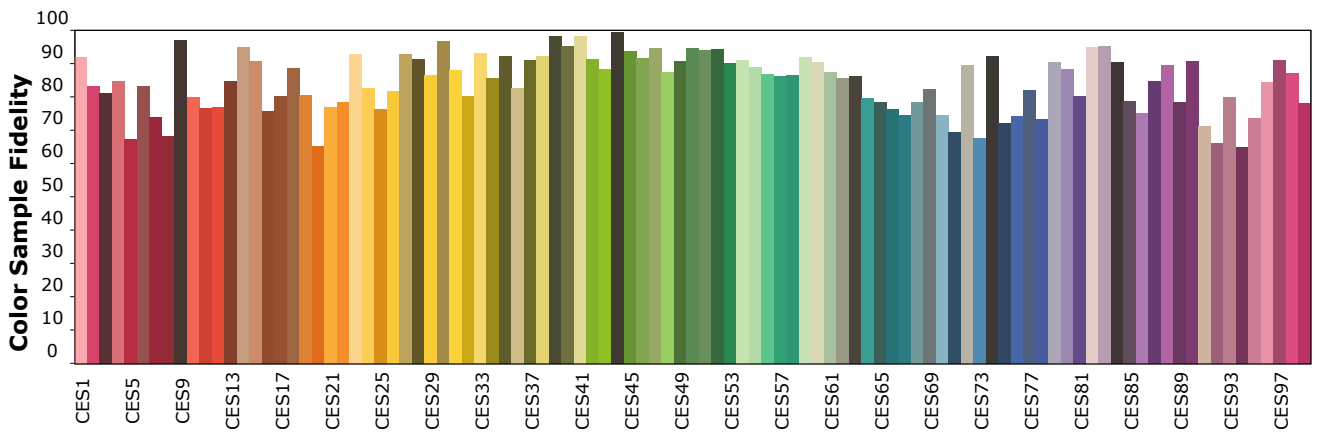
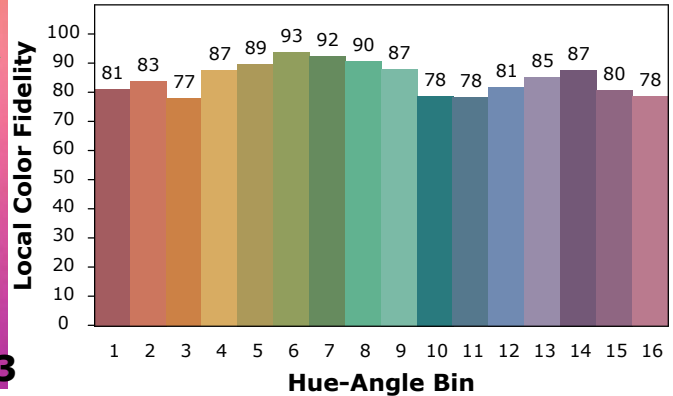
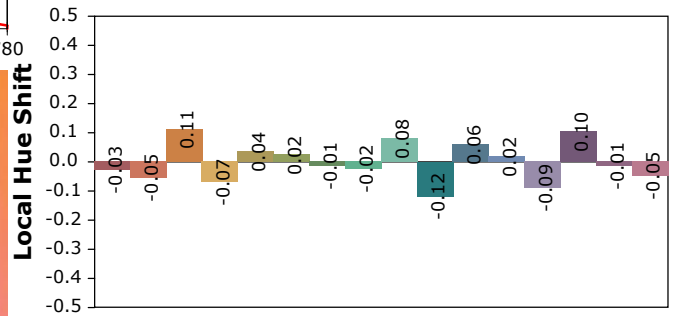
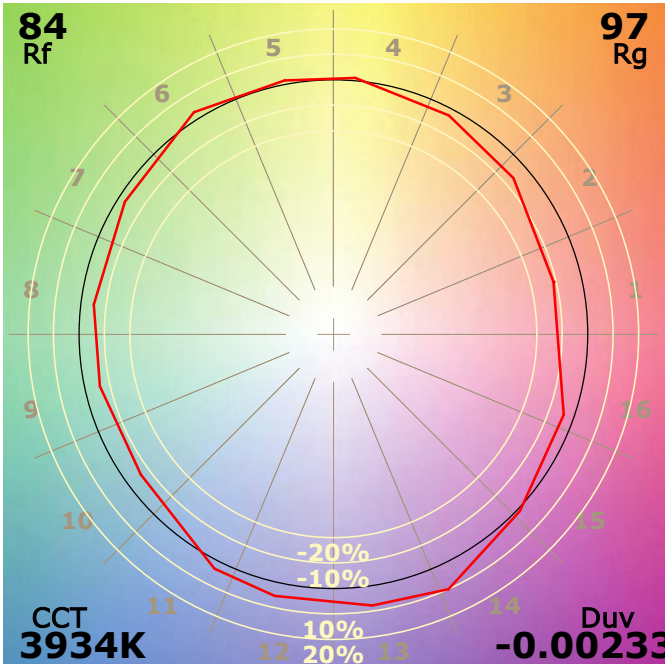
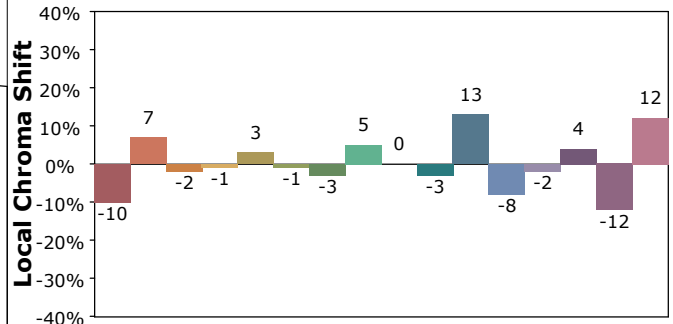
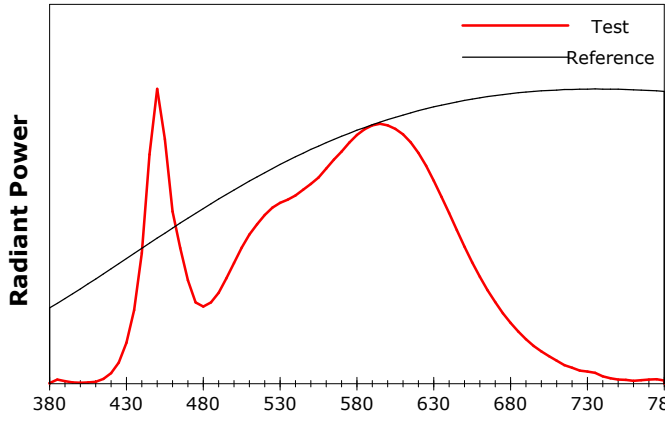
IES TM-30-18 Color Rendition Report

Product Information

Product Type: OJL608-30W-4000K 象牙白

Product Number: 93

Buyer:



Condition: Tx:35.3'C, Ti:33.8'C, R.H.:60%

Test Lab:

Operator:

Test Device: CMS-2S (Plus)

Test Time: 2024-04-17 16:14:35

Inspector: