

## Lightsource Test Report

### Product Information

Product Type: OJL608-15W-4000K

Product Number: 214

Buyer:

### CIE Colorimetric Parameters

Chromaticity coordinates:  $x=0.3831$   $y=0.3758$   $u(u')=0.2272$   $v=0.3344$   $v'=0.5015$

CCT:  $T_c=3922K$  ( $duv=-0.00122$ )

Color Ratio:  $R=0.188$   $G=0.779$   $B=0.033$

Peak Wavelength: 447.0nm

Half Bandwidth: 19.6nm

Dominant Wavelength: 599.0nm

Color Purity: 0.277

Central Wave: 449.2nm

Gravity Wave: 448.5nm

CRI:  $R_a=83.8$ ,  $avgR(1\sim14)=77.7$ ,  $avgR(1\sim15)=77.6$

TM30:  $R_f=84$ ,  $R_g=98$

GAI:  $GAI\_BB\_8=96.7$ ,  $GAI\_BB\_15=102.1$ ,  $GAI\_EES=75.0$

R1 =83

R2 =88

R3 =93

R4 =84

R5 =83

R6 =85

R7 =86

R8 =68

R9 =16

R10=73

R11=84

R12=64

R13=84

R14=96

R15=77

Color Quality Scale:  $Q_a=83.3$ ,  $Q_f=83.0$ ,  $Q_p=84.6$ ,  $Q_g=95.3$

Q1 =83

Q2 =98

Q3 =78

Q4 =77

Q5 =83

Q6 =85

Q7 =85

Q8 =89

Q9 =97

Q10=87

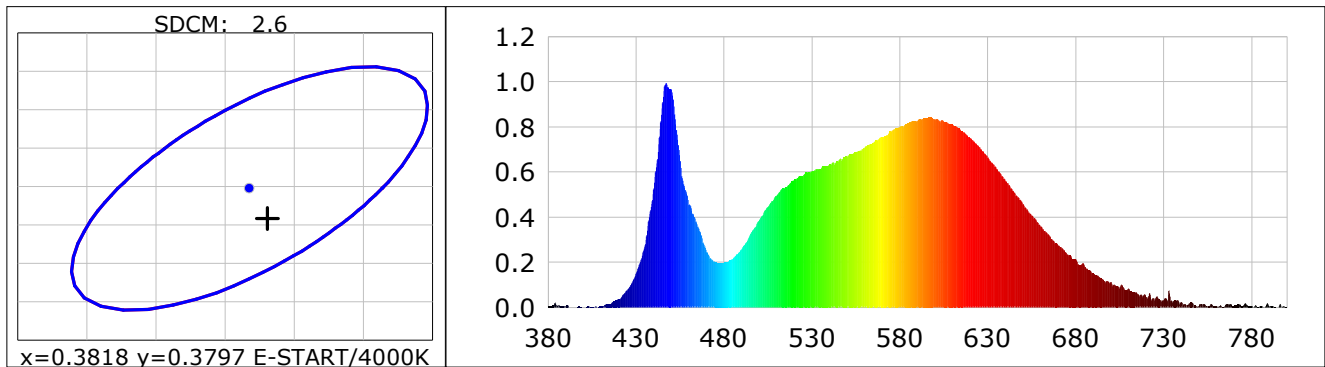
Q11=85

Q12=84

Q13=84

Q14=75

Q15=78



### Photometric Parameters

Luminous Flux: 2019.6 lm

Efficiency: 126.86 lm/W

Radiant Power: 6.181 W

Total mains efficacy: 126.86 lm/W

Energy Efficiency Class: E (EU 2019/2015)

Cirtpic Flux: 5939.32 lm

### Electric Parameters

Voltage: 109.30V

Current: 0.1460A

Power: 15.92W

Power Factor: 0.9940

Frequency: 60.00Hz

### Test Information

Scan Range: 380~800:1nm

Photometric Method: sphere-spectroradiometer

Stabilization Time: 0 Sec ALC.: 1.0000

Photometric Condition: Sphere diameter: 1.50m, 4T

Max of Signal: 47782 (3540)

CCD Integration Time: 3494.88 ms

Condition: Tx:27.5'C, Ti:23.8'C, R.H.:60%

Test Lab:

Operator:

Test Device: CMS-2S (Plus)

Test Time: 2024-01-18 17:45:35

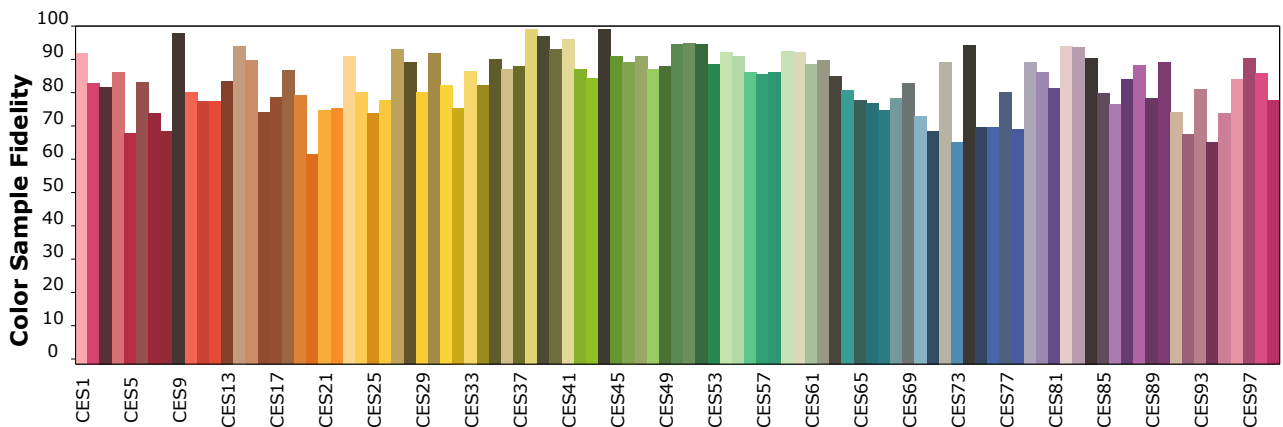
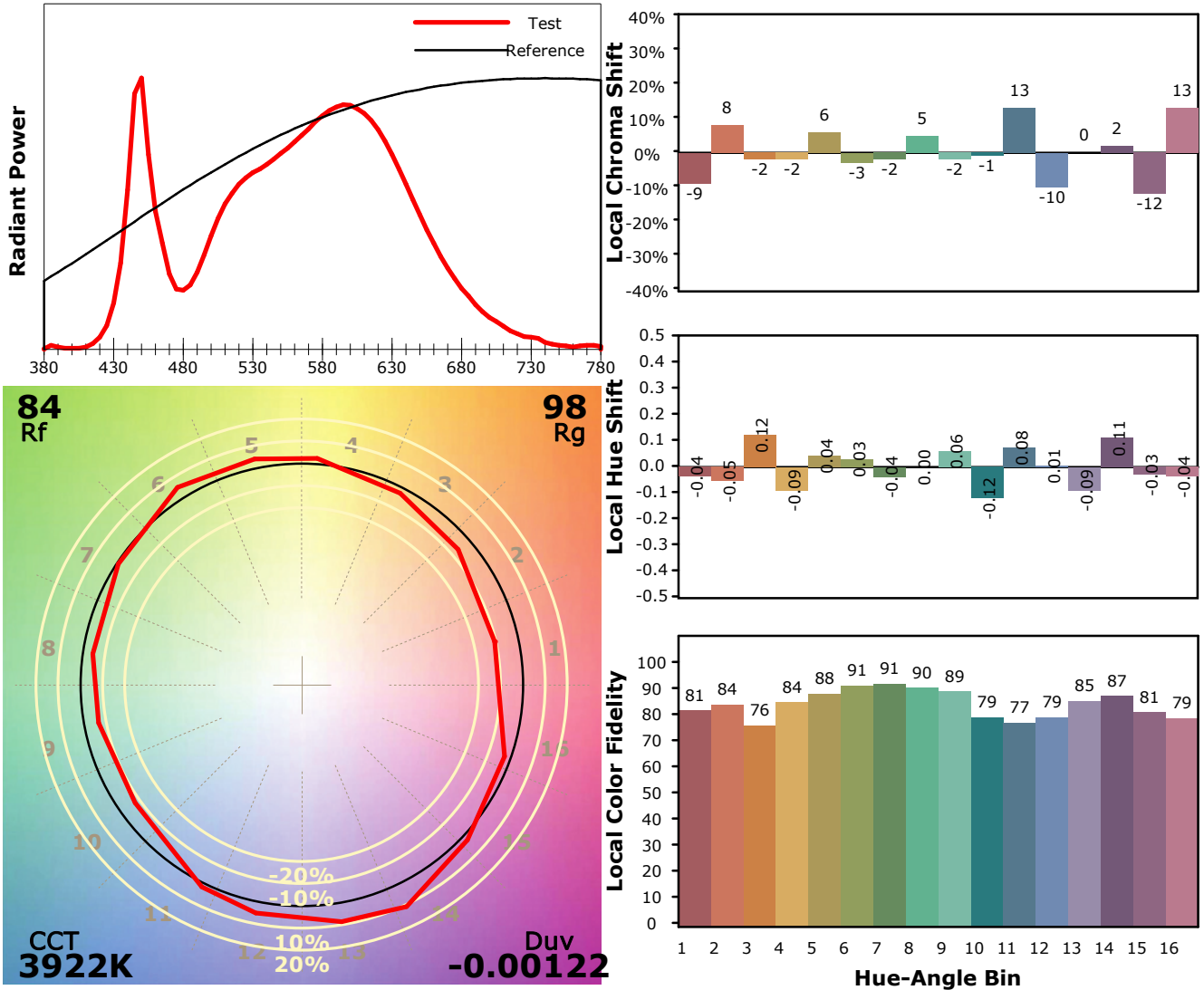
Inspector:

## Product Information IES TM-30-18 Color Rendition Report

Product Type: OJL608-15W-4000K

Product Number: 214

Buyer:



Condition: Tx:27.5'C, Ti:23.8'C, R.H.:60%

Test Lab:

Operator:

Test Device: CMS-2S (Plus)

Test Time: 2024-01-18 17:45:35

Inspector: